

Conference Paper

Extraction and Toxicity Assay of Mycotoxin from Entomopathogenic Fungi Isolate of Kusuma Agrowisata Orchard Batu, Jawa Timur, Indonesia

Derdy Janli¹, Maria Goretti M. Purwanto¹, Ida Bagus Artadana¹,
and Theresia Desy Askitosari²

¹Department of Biology, Faculty of Biotechnology, Surabaya University, Surabaya 60293, Indonesia

²Department of Applied Microbiology, University of Aachen, Germany

Abstract

Insect pest control has been a major problem faced by farmers around the world and there has been no perfect solution to handle it. The use of insecticides derived from chemically active compounds has made negative impacts such as the emergence of resistant pest and disruption of ecosystems. In addition, it raised many other negative impacts on the environment and on non-target organisms. Therefore, an alternative is needed to replace chemical insecticides. Entomopathogenic fungus is one of the potential biological control organism to suppress the growth of insect pests. This study aims to extract mycotoxin from entomopathogenic fungi isolated from the apple orchard at Batu, East Java, Indonesia and determine the level of toxicity against *Tenebrio molitor* larvae. Mycotoxin was extracted using precipitation with ammonium sulphate and dialysis. It was subjected to molecular weight analysis and toxicity test to determine the LC₅₀ value. Results showed that protein bands were found between 20 kDa to 55 kDa. Based on the study, the mycotoxin showed a LC₅₀ at a concentration of 42.78 $\mu\text{g} \cdot \text{mL}^{-1}$.

Keywords: Entomopathogenic fungi, mycotoxin, *Tenebrio molitor* Linn.

1. Introduction

Plant pest is one of the important biotic constraints in the cultivation of various crops. Farmers who apply conventional way of farming often use synthetic insecticides to control pest that attacks their crops [1]. Synthetic insecticides are known to have many advantages which are effective at low doses, gives quick result and it can be used in a variety conditions and economical [2]. Besides having many advantages, synthetic insecticides also can lead to various negative impacts, including impact on environmental conservation with the murder of an organism that not the targets which is located within or near the site of application including natural enemies of pests, resistance and resurgence of pests and the emergence of secondary pests and the consumers [3].

Corresponding Author:

Derdy Janli

lev.val94@gmail.com

Received: 9 June 2017

Accepted: 15 July 2017

Published: 11 September 2017

Publishing services provided
by Knowledge E

© Derdy Janli et al. This article is distributed under the terms of the [Creative Commons Attribution License](#), which permits unrestricted use and redistribution provided that the original author and source are credited.

Selection and Peer-review under the responsibility of the NRLS Conference Committee.

 OPEN ACCESS

One alternative of pest control which can be used to overcome the shortcomings of synthetic insecticides is entomopathogenic organisms [4]. One example of entomopathogenic organisms is fungi capable of infecting various types of pests from several orders by infiltrating into the host insect's body through the skin, gastrointestinal tract, spiracles and other openings [5]. The fungal inoculum which is attached to the body of the host insect will germinate and grow to form a tube sprouts, then enter the body through the skin. Penetration into the body of the insect cuticle is done mechanically and / or chemically with enzymes or toxins. Fungi will develop in the body and invade host tissues throughout the body, causing the insects to die. Fungi mycelia penetrate outside the host body to grow over the host body and produce conidia. These fungi also contain extreme toxic mycotoxin to kill the target insects in just a short time span ranging from 3 d to 5 d after application [6, 7]. These fungi are capable of infecting various stages of insects, including larvae and imago [8]. Some types of fungi entomopathogenic already known to effectively control important pests of plants are *Beauveria* sp., *Metarhizium anisopliae*, *Nomuraea rileyi*, *Paecilomyces fumosoroseus*, *Aspergillus parasiticus*, and *Verticillium lecanii*. *Beauveria* sp. is reported as a highly effective biological agent that can infecting some insect pests, especially of the Lepidoptera, Hemiptera, Homoptera and Coleoptera order [9]. As an insect pathogen, *Beauveria* sp. can be isolated from the crop or the ground. In general, entomopathogenic fungi prefers cold areas with high humidity, such as Malang and Temanggung [10].

Batu, East Java, Indonesia is a plateau area with humid and cold environment. Batu area tends to be at moderate to cold condition with temperature between 22 °C to 26.2 °C This climatic condition is influenced by the altitude of the region Batu ranging from 600 ASL to more than 3 000 ASL. Such a climate is suitable for apple plantation that requires humid and cold condition as well as for the growth of entomopathogenic fungi, one of which is *Beauveria* sp. In previous studies [11]. In this work, mycotoxin from entomopathogenic fungi isolated from apple orchard Batu was extracted and tested for toxicity assay.

2. Materials and methods

2.1. Production of Mycotoxin by Entomopathogenic Fungi

Ammout of 1 mL of hyphae inoculum of fungi in PDA medium with a number of conidia 107 conidia/mlis inoculated aseptically into a sterile, 250 mL erlenmeyer flask containing 100 mL of Potato Broth + Yeast extract, peptone and glucose. The culture was then incubated at 28 °C for 8 d at 110 rpm (mycotoxins produced at stationary phase) (1 rpm = 1/60 Hz).

2.2. Precipitation with Ammonium Sulphate

Potato Broth + Yeast extract, peptone and glucose medium were separated from the mycelium by filtration using filter paper. The medium is centrifuged at 10 000 g for 30 min at 4 °C, the obtained supernatant was called as crude extract. Then crude extract

gradually was precipitated at a temperature of 4 °C with ammonium sulfate with saturation level of 50 %, 70 % and 90 %. In the precipitation process, ammonium sulphate was added slowly until dissolved using a magnetic stirrer, followed by centrifugation at 10 000 g for 30 min at 4 °C. Supernatant obtained was used for the next precipitation, while the pellet was dissolved in buffer Tris / HCl pH 8 for dialysis.

2.3. Protein determination

Protein concentration in crude extract and each fraction was measured using Bradford method.

2.4. Toxicity assay

Crude extract and each fraction were subjected to toxicity assay against F1 stage 3 *Tenebrio molitor* larvae according to Wartono and Tri Puji [12]. Thirty larvae were placed on a petri dish covered with filter paper. Then, 1 mL suspension of protein samples from crude extract and each fraction were sprayed in the same amount into the petri. Mortality of larvae was observed every day for 48 h. After observation on larvae mortality, the LC₅₀ value was determined. Toxicity testing was conducted using a negative control and a positive control. For negative control, sample was replaced by distilled water at the same volume and for the positive control, sample was replaced with chemical insecticides solution at the same concentration. The test was done with three replications.

2.5. Molecular weight determination (SDS PAGE)

2.5.1. Gel preparation

Separating gel was made by mixing 3.125 mL of 30 % acrylamide stock solution and 2.75 mL of 1 M Tris pH 8.8 into a beaker glass. Then 1.505 mL of double distilled water, 75 µL of 10 % SDS, 75 µL of 10 % APS and 6.25 µL of TEMED were added one by one and homogenized. Stacking gel that made in the same way with the following composition: 0.45 mL of 30 % acrylamide stock solution, 0.38 mL 1 M Tris pH 6.8, 2.11 mL of double distilled water, 30 µL of 10 % SDS, 5 µL of TEMED and 30 µL of 10 % APS.

2.5.2. Sample preparation

Sample solution and loading buffer was mixed at the ratio 1:1. The mixture was then heated at a temperature of 100 °C for 5 min.



Figure 1: Purified fungi on Potato Dextrose Agar (PDA) medium.

2.5.3. Gel running, staining and destaining

A volume of 10 to 20 μL sample was loaded into the wells (protein in the sample should be about 20 μg to 40 μg). Voltage of 20 mA was applied. After the running process finished, gel was stained with staining solution consisting of 1 g Coomassie Blue R- 250, 450 mL of methanol, 450 mL of distilled water and 100 mL glacial acetic acid. Staining was carried out for 15 min while being shaken. Destaining was done for 30 min in the same way using a mixture of 100 mL methanol, 100 mL of glacial acetic acid and 800 mL of distilled water.

3. Results

3.1. Confirmation of Entomopathogenic fungi isolated from Kusuma Agrowisata apple orchard

Based on previous research, two different colonies of fungi were obtained using insect bait trap. From the morphology of the fungi colonies on PDA medium, the white colonies resembled chalk and the purple colony resembled cotton. Each separate colony was taken and inoculated into PDA medium (incubation at room temperature for 4 d) to obtain pure fungi colony (Figure 1).

To test the ability of the fungi as potential bioinsecticide, ten *Tenebrio molitor* larvae are put in a petri containing the isolated fungi so entomopathogenic fungi can infect the larvae. Based on the results, colony 1 (K.1) caused fungal infection with mortality rate of larvae at 100 % after 72 h. In the entomopathogenic fungal infections, the larvae body was covered with fungi mycelia (Figure 2).

Then, the mortality assay was continued to test the entomopathogenic ability of the colony 2. Based on the results of fungal infections after 72 h, colony 2 (K.2) did not cause death to any of ten *Tenebrio molitor* larvae (mortality rate was 0 % as seen in



Figure 2: Fungal infection of samples of fungi isolates K.1 to *Tenebrio molitor* larvae.

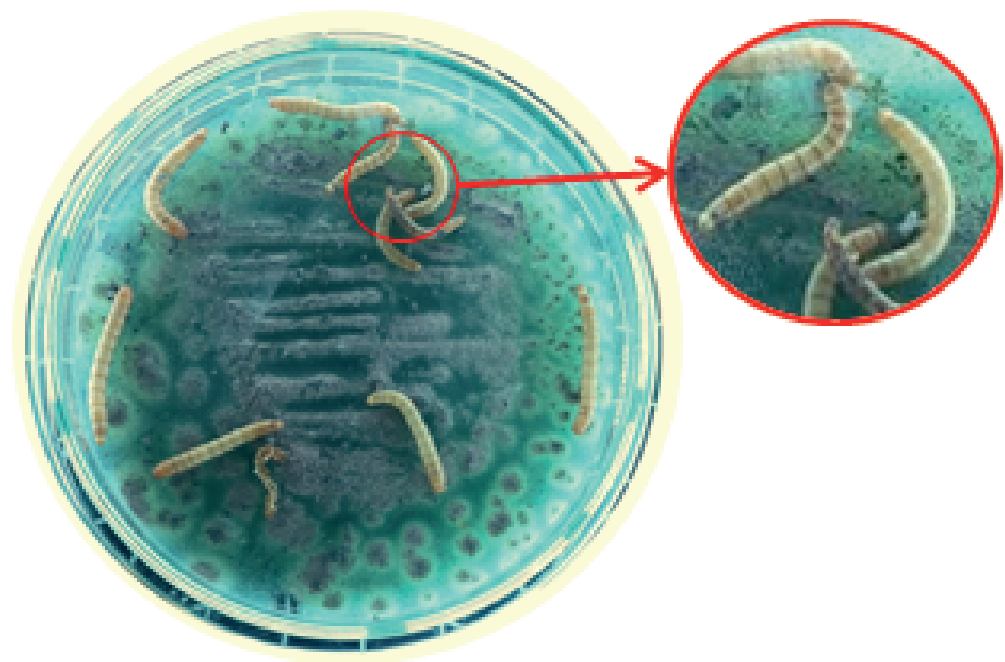


Figure 3: No fungal infection of samples fungi isolates K.2 observed to *Tenebrio molitor* larvae.

Figure 3). This indicated that the colony K.2 does not possess the entomopathogenic ability.

Sample	Volume (mL)	Protein (mg · mL ⁻¹)	Total Protein (mg)
Crude Extract	6.0	0.95 ± 0.02	5.70 ± 0.11
50 %-Fraction	6.0	0.40 ± 0.28	2.39 ± 0.17
70 %-Fraction	6.3	0.51 ± 0.01	3.23 ± 0.2
90 %-Fraction	6.0	0.28 ± 0.01	1.70 ± 0.06

TABLE 1: Protein concentration of different fractions.

Sample	Total number of dead insect	Protein concentration (µg · mL ⁻¹)
Crude Extract	30.00 ± 0.00	200
50 %-Fraction	19.67 ± 0.58	200
70 %-Fraction	30.00 ± 0.00	200
90 %-Fraction	15.33 ± 2.08	200
Supernatant-Fraction	2.33 ± 1.15	183.15

TABLE 2: Toxicity against *Tenebrio molitor* larvae.

3.2. Fractionation/precipitation and dialysis

Fractionation of toxin from colony fungi 1 (K.1) was done by adding ammonium sulphate at 50 %, 70 % and 90 % saturation degree and the data are presented in Table 1.

3.3. Toxicity assay and lethal concentration₅₀

Toxicity assay results are presented in Table 2. The toxicity assay is to demonstrate the existence of insecticidal activity in the mycotoxins.

Based on the results of toxicity assay, it is shown that both mycotoxin from crude extract and dialysed 70 %-fraction caused 100 % mortality of the larvae *T. molitor*. Therefore, crude extract was then selected to be used to determine the LC₅₀ with Range-Finding Test and Definitive Test. In Range-Finding Test as a preliminary test of LC₅₀ was done with a concentration range about 12.5 µg · mL⁻¹, 25 µg · mL⁻¹, 50 µg · mL⁻¹, 100 µg · mL⁻¹. The results are presented in Table 3.

Based on the result as seen in Table 3, dead larvae was found in the negative control, so the mortality data are corrected by using the Abbot formula [13] in order to obtain corrected mortality (Table 4).

Dilution of crude extract	Total insect mortality	Protein (µg · mL ⁻¹)	Percent (%)
Chemical Insecticide (positive control)	30.00 ± 0.00	-	100
Distilled Water (negative control)	1.00 ± 0.00	-	3.33
2x	28.00 ± 2.64	100.0	93.33
4x	18.67 ± 2.08	50.0	62.22
8x	7.67 ± 0.58	25.0	25.56
16x	4.00 ± 1.00	12.5	13.33

TABLE 3: Range-finding test.

Protein ($\mu\text{g} \cdot \text{mL}^{-1}$)	100	50	25	12,5
Percent mortality (%)	93.33	62.22	25.56	13.33
Corrected mortality (%)	90.00	58.89	22.23	10.00

TABLE 4: Corrected mortality on range-finding test.

Protein concentration of crude extract ($\mu\text{g} \cdot \text{mL}^{-1}$)	Total insect mortality	Percent (%)
25	7.67 ± 0.58	25.56
30	10.00 ± 1.00	33.33
35	13.33 ± 1.53	44.44
40	15.67 ± 1.15	52.22
45	16.67 ± 1.53	55.56
50	18.67 ± 2.08	62.22

TABLE 5: Narrowed definitive test.

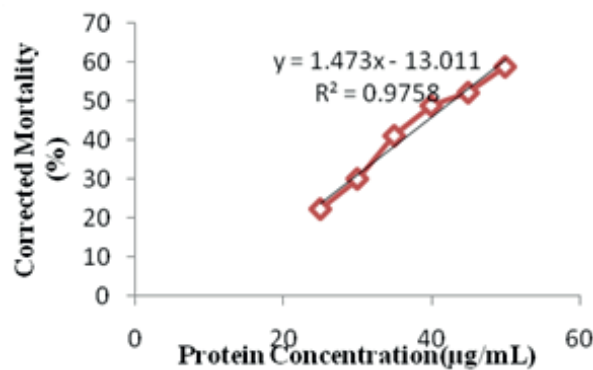


Figure 4: Relationship between protein concentration against corrected mortality.

Range-Finding Test result indicated that the potential value of LC50 is at concentration between $25 \mu\text{g} \cdot \text{mL}^{-1}$ and $50 \mu\text{g} \cdot \text{mL}^{-1}$. Therefore, the range of concentrations used for narrowed Definitive Test between $25 \mu\text{g} \cdot \text{mL}^{-1}$ and $50 \mu\text{g} \cdot \text{mL}^{-1}$. The result of narrowed Definitive Test is presented in Table 5.

Due to the larvae mortality found in the negative control amounted to 3.33 %, the mortality data was corrected using Abbot formula [13] in order to obtain corrected mortality (Table 6). The data are then analysed using linear regression analysis.

The regression equation derived from the analysis is $Y = 1,473X + 13,011$. From the regression equation, the protein concentration of a toxin able to cause mortality of larvae as much as 50 % (LC50) is predicted to be $42.78 \mu\text{g} \cdot \text{mL}^{-1}$.

Protein concentration ($\mu\text{g} \cdot \text{mL}^{-1}$)	25	30	35	40	45	50
Percent mortality (%)	25.56	33.33	44.44	52.22	55.56	62.22
Corrected mortality (%)	22.23	30.00	41.11	48.89	52.23	58.89

TABLE 6: Corrected mortality on definitive test.

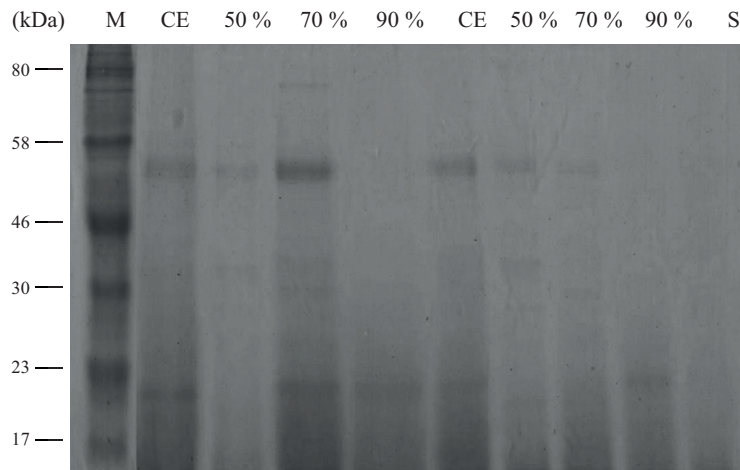


Figure 5: SDS PAGE Result: Protein Marker (M), Crude Extract (CE), 50%-Fraction (50 %), 70 %-Fraction (70 %), 90 %-Fraction (90 %), and Supernatant (S).

3.4. Determination of Protein Molecular Weight by SDS PAGE

SDS PAGE results can be seen in Figure 5. Crude extract and 70 %-Fraction showed a protein band of the same size (55 kDa). It is also indicated that the 50 %-Fraction, which also has a protein band 55 kDa, provided toxicity effect with larval mortality greater than the 90 %-Fraction, which did not show the protein band of 55 kDa.

4. Discussion

4.1. Confirmation of fungi Entomopathogenic isolated from Kusuma Agrowisata apple orchard

In this study, fungus used in the production of mycotoxins was isolated of the Kusuma Agrowisata Apple Orchard, Batu, East Java, Indonesia, with temperatures around 24 °C. Soil samples were used to infect the larvae of *Tenebrio molitor* at room temperature and dark condition by means of insect baiting traps where 10 *T. molitor* larvae buried in soil samples and incubated at humid conditions for 2 wk. Infected larvae died with the characteristics of the body covered with fungi mycelia. This is in accordance with the characteristics of the larvae infection by *Beauveria* sp. [14]. Enrichment was done by inoculating these fungi in Potato Dextrose Agar (PDA) as general medium for fungi. After incubation at room temperature for 4 d, two different colonies were observed to grow with different morphology.

Each colony of fungi is inoculated back to the new PDA medium in order to obtain pure colonies. This is done to further testing of the colony which is entomopathogenic. The colonies were labeled with K.1 and K.2, respectively. Furthermore, 10 *T. molitor* larvae were put in petri dish containing each type of colony and it was observed that only colony K.1 caused significant mortality of *T. molitor* larvae where the larval body covered mycelia. In addition, the morphology of fungi K.1 has the appearance of white with chalk texture similar to that as reported by Utami [15], where the

entomopathogenic fungi *Beauveria bassiana* isolated from Malang and Magetan districts were found able to infect *P. xylostella*.

4.2. Extraction, toxicity assay and determination of Lethal Concentration (LC₅₀) of Mycotoxins from Entomopathogenic fungi

Mycotoxin production was done by inoculating the entomopathogenic fungi in suitable medium (Potato Broth with the addition of 4 % of glucose, 4 % of yeast extract and 3 % of peptone). Glucose is the optimal carbon source and peptone is the optimal organic nitrogen source to increase the production of mycotoxins [16]. Separation of mycotoxin from the mycelia was done with centrifugation, leaving the mycotoxin dissolved in the supernatant. This supernatant is called crude extract. The harvested crude extract was then subjected to precipitation by ammonium sulfate addition with saturation level of 50 %, 70 % and 90 % and finally was subjected to the subsequent dialysis to remove any remaining salt ammonium.

Toxicity assay is done by spraying mycotoxins to 30 *Tenebrio molitor* larvae placed on a petri dish. The results showed that the crude extract showed comparable toxicity as the supernatant from 70 % saturation degree of ammonium sulphate precipitation did, giving the highest mortality of the larvae (100 % mortality). Therefore, LC₅₀ will be determined from the crude extract. Larvae experiencing mortality at 48 h after treatment was characterized by changes in body color to black and also shriveling of the larval body, probably due to lysis process [17].

Toxicity assay was also done for the supernatant aimed to confirm that insecticidal activity was really due to the protein and not the micromolecule or secondary metabolites. Based on the results obtained, the supernatant did not show insecticidal activity nor larval mortality. According Vey et al. [18], mycotoxin from entomopathogenic fungi showing insecticidal effects are mostly proteins or peptides cyclic. Moreover, according to Quesada-Moraga and Vey [19], purified mycotoxin from entomopathogenic fungi resulted in protein macromolecules with insecticidal activity.

Range-finding test showed that potential LC₅₀ value of the mycotoxin is between 25 $\mu\text{g} \cdot \text{mL}^{-1}$ and 50 $\mu\text{g} \cdot \text{mL}^{-1}$. Definitive test that narrows the range of the results of the range-finding test finally resulted in an LC₅₀ value to be 42.78 $\mu\text{g} \cdot \text{mL}^{-1}$. According to Genthner et al. [20], LC₅₀ mycotoxin produced from entomopathogenic fungi *Beauveria* sp. was amounted to 84.2 $\mu\text{g} \cdot \text{mL}^{-1}$. Murugesan et al. [21], also reported that mycotoxin fungi *Trichophyton mentagrophytes* showed an LC₅₀ value of 110 $\mu\text{g} \cdot \text{mL}^{-1}$. Although LC₅₀ value of the chemical insecticide used in this work was less than 1 $\mu\text{g} \cdot \text{mL}^{-1}$, the use of mycotoxins as bioinsecticide is still potential because it has advantages over chemical insecticides as it is safer for humans and other non-target organisms [22].

According Natawigena [23], the mechanism of resistance in insects may be given by the morphological, physiological and biochemical aspects. Morphologically and physiologically, insects possess different cuticles or barriers such as fur and have different speeds in deciphering insecticide. Biochemically, the enzyme in the body of the insect is capable of performing the process of inactivation of the active substance.

4.3. Determination of Protein Molecular Weight by SDS PAGE

In Figure 5, it appears proteins in the extract are of around 20 kDa to 55 kDa. Based on the results of toxicity assay, most likely mycotoxin size is about 55 kDa. Since that fraction showed the highest mortality of *T. molitor* larvae.

Many researchers have worked on the activity study of insecticidal entomopathogenic fungi and found diverse compounds, among others: Beauvericin - MW 28 kDa [24], destruxins - MW 22 kDa [25], bassianin - MW 18 kDa; bassianolide - MW 390 kDa; beauverolides - MW 72 kDa [18], tenellin - MW 60 kDa [26], and oosporein - MW 83 kDa [27]. There are still other mycotoxin from entomopathogenic fungi that has not been identified by name as researched by Meng et al. [28], with a size of about 50 kDa derived from *Beauveria* sp.

Based on the results of SDS PAGE, we found protein bands around 20 kDa, 36 kDa, and 55 kDa. The optimal insecticidal activity is observed by the band of around 55 kDa. Similar finding was published by Cheong [29] where *Beauveria bassiana* produced mycotoxins which MW of 21 kDa to 55 kDa and the protein with a band measuring approximately 55 kDa had been identified to have potential insecticidal activity.

Acknowledgements

This research was supported by Faculty of Biotechnology, University of Surabaya, Indonesia. Thanks to lecturers and laboratory technicians in supporting the research works and suggesting manuscript improvements.

References

- [1] Metcalf RL. Insecticides in pest management. In: Introduction to insect pest management 2nd ed. New York. Metcalf RL, Luckman WH (Eds.): John Wiley & Sons. 1982. pp. 215-275.
- [2] Djojosumarto P. Pesticida dan Aplikasinya [Pesticide and their application]. Jakarta: PT Agromedia Pustaka; 2008.
- [3] Perry AS, Yamamoto I, Ishaaya I, Perry RY. Insecticides in agriculture and environment: Retrospects and prospects, Berlin: Springer-Verlag; 1998.
- [4] Prakash A, Rao J. Botanical pesticides in agriculture, Boca Raton: CRC Press; 1997.
- [5] Tamuli AK, Gurusubramaniam G. Entomopathogenicity of white muscardine fungus *Beauveria bassiana* (Bals.) Vuill. (Deuteromycotina: Hyphomycetes) (BBFF-135) against *Odontotermes* (Rambur) (Isoptera: Termitidae). Assam University Journal of Science & Technology: Biological & Environmental Sciences; 2011;7(1):118-125.
- [6] Lozano-Gutierrez J, Espana-Luna MP. Pathogenicity of *Beauveria bassiana* (Deuteromycotina: Hyphomycetes) against the white grub *Laniifera cyclades*

- (Lepidoptera: Pyralidae) under field and greenhouse conditions. *Florida Entomology*;2008;91(4):664-669.
- [7] Trizelia, Nurdin F. Virulence of entomopathogenic fungus *Beauveria bassiana* isolates to *Crocidolomia pavonana* (F.) (Lepidoptera: Crambidae), *Agrivita*;2010;32(2):254-262.
- [8] James RR, Buckner JS, Freeman TP. Cuticular lipids and silverleaf whitefly stages affect conidial germination of *Beauveria bassiana* and *Paecilomyces fumosoroseus*. *Journal of Invertebrata Pathology*;2003;84:67-74.
- [9] Prayogo Y. Kajian cendawan entomopatogen *Lecanicillium lecanii* (Zimm.) (Viegas) Zare & Gams sebagai agens hayati untuk mengendalikan telur hama pengisap polong kedelai *Riptortus linearis* (F.) (Hemiptera: Alydidae) [Study of entomopathogenic fungi *Lecanicillium lecanii* (Zimm.) (Viegas) Zare & Gams as biological agents to control eggs of soybean pod suckers *Riptortus linearis* (F.)]. [Dissertation], Departemen Proteksi Tanaman. Sekolah Pascasarjana. Institut Pertanian Bogor; 2009. [in Bahasa Indonesia].
- [10] Indrayani IGAA. Potensi Jamur Entomopatogen *Nomuraea rileyi* (Farlow) Samson untuk pengendalian *Helicoverpa armigera* Hubner pada Kapas [Potential of *Nomuraea rileyi* (Farlow) Samson as a Entomopathogen to *Helicoverpa armigera* Hubner on cotton], *Perspektif*;2011;10(1);11-21. [in Bahasa Indonesia].
- [11] Soelarso RB. Budidaya apel [Cultivation of apples], Kanisius: Yogyakarta; 1996. [in Bahasa Indonesia]
- [12] Wartono, Puji T. Pertumbuhan bakteri *Photobacterium luminescens* pada berbagai media dan produksi eksotoksin sebagai racun serangga [*Photobacterium luminescens* bacterial growth in various medium and exotoxin production as insect poison]. *Jurnal Entomologi Indonesia* 2009;6(2):60-69. [in Bahasa Indonesia].
- [13] Busvine JAR. Critical techniques for testing insecticides. Commonwealth Agricultural Bureaux London;1971. pp. 268-278.
- [14] Wahyudi P. Enkapsulasi propagul jamur entomopatogen *Beauveria bassiana* menggunakan alginat dan pati jagung sebagai produk Mikroinsektisida. [Encapsulation of propagules from entomopathogenic fungi *Beauveria bassiana* using alginate and corn starch as microinsecticide product]. *Jurnal Ilmu Kefarmasian Indonesia*;2008;6(2):51-56. [in Bahasa Indonesia].
- [15] Utami RS, Isnawati, Ambarwati R. Eksplorasi dan karakterisasi cendawan entomopatogen *Beauveria bassiana* dari Kabupaten Malang dan Magetan. [Exploration and characterization entomopathogenic fungi *Beauveria bassiana* from Malang and Magetan district]. *Lentera Bio* 2014;3(1):59-66. [in Bahasa Indonesia].
- [16] Xu L, Wang J, Zhao J, Li P, Shan T, Wang J, et al. Beauvericin from the endophytic fungus, *Fusarium redolens*, isolated from *Dioscorea zingiberensis* and its antibacterial activity. *Natural Product Communications*;2010;5:811-814.

- [17] Bravo A, Gill SS, Soberon M. Mode of action of *Bacillus thuringiensis* Cry and cry toxins and their potential for insect control. *Toxicon*;2007;49:423-435.
- [18] Vey A, Hoagland R, Butt TM. Toxic metabolites of fungal biocontrol agents. In: *Fungi as biocontrol agents: Progress, problems and potential*. Butt TM, Jackson CW, Magan N (Eds). Wallingford:CAB International; 2001. pp. 311-346.
- [19] Quesada-Moraga E, Vey A. Bassiacridin: A Protein toxic for locusts secreted by the entomopathogenic fungus *Beauveria bassiana*, *Mycological Research* 2004;108:441-452.
- [20] Genthner FJ, Cripe GM, Crosby DJ. Effect of *Beauveria bassiana* and its toxins on *Mysidopsis bahia* (Mysidacea). *Archives of Environmental Contamination and Toxicology*;1994;26:90-94.
- [21] Murugesan AG, Sathesh PC, Selvakumar C. Biolarvicidal Activity of Extracellular Metabolites of the Keratinophilic Fungus *Trichophyton mentagrophytes* against Larvae of *Aedes aegypti* – a Major Vector for Chikungunya and Dengue. *Folia Microbiologica*;2009;54(3):213-216.
- [22] Shahid AA, Rao AQ, Bakhsh A, Husnain T. Entomopathogenic fungi as biological controllers: New insights into their virulence and pathogenicity. *Archives of Biological Science Belgrade*;2012;61:21-42.
- [23] Natawigena H. *Entomologi pertanian [Agricultural entomology]* Bandung: Orba Sakti;1990. p.200 [in Bahasa Indonesia].
- [24] Safavi SA. Isolation, Identification and pathogenicity assessment of a new isolate (BEH) of entomopathogenic fungus, *Beauveria bassiana*. *Journal of Plant Protection Research* 2010;50(2):158-163.
- [25] Strasser H, Vey A, Butt TM. Are there any risks in using entomopathogenic fungi for pest control, with particular reference to the bioactive metabolites of *Metarhizium*, *Tolypocladium* and *Beauveria* Species? *Biocontrol Science Technology* 2000;10(6):717-735.
- [26] Zimmermann G. Review on safety of the entomopathogenic fungi *Beauveria bassiana* and *Beauveria brongniartii*. *Biocontrol Science and Technology* 2007;17(6):553-596.
- [27] Gupta S, Montillor C, Hwang YS. Isolation of novel *Beauvericin analogues* from the fungus *Beauveria bassiana*, *Journal of Natural Products* 1995;58(5):733-738.
- [28] Meng HM, Wang Z, Meng X, Xie L, Huang B. Cloning and expression analysis of the chitinase gene *lfu-chitz* from *Isaria fumosorosea*. *Genetics and Molecular Biology* 2015;38(3):381-389.
- [29] Cheong P. *Bioactive Metabolites of an isolate of the Entomopathogenic Fungus Beauveria bassiana*. [Thesis PhD]. Lincoln University, New Zealand, 2015. p. 280.



KnE Life Sciences


Knowledge E
Publishers

International Conference on Natural Resources and Life Sciences Agriculture

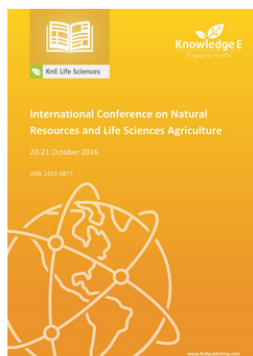
20-21 October 2016

ISSN 2473-0877



www.knowledgepub.com

International Conference on Natural Resources and Life Sciences (NRLS-2016)



PUBLISHED
2017-09-11

[KnE Life Sciences](#) / International Conference on Natural Resources and Life Sciences (NRLS-2016)

The 1st International Conference on Natural Resources and Life Sciences – NRLS 2016 – was organized by the Faculty of Biotechnology, University of Surabaya, Indonesia. The theme of this conference is set on the theme of 'Multidisciplinary Science for Better Achievement'. The conference facilitated the exchange of useful information on life sciences and natural resources' exploration practices for the future human needs. Over 120 researchers participated in the conference from countries and regions such as Germany, Netherland, Nepal, Korea, Thailand, Malaysia, and Indonesia. From over 113 abstracts and presentations, 22 papers are selected to be published in KnE Conference Proceeding, representing the themes of 2016, that is, Food Biotechnology, Plant Biotechnology, Medical Biotechnology & Forensics, and Environmental Biotechnology & Renewable Energy. All 22 manuscripts in KnE Life Sciences, vol. 2017, have been reviewed by the experts from University of Groningen, University of Potsdam, RWTH Aachen University, Kyung Hee University, Universiti Selangor, and University of Surabaya, Indonesia. The reviewing process at KnE involves experts having professional editing background from four countries (Indonesia, Latvia, Malaysia, and Sweden).

Conference date: 20–21 October 2016

Location: Surabaya, Indonesia

Editors: Roy Hendroko Setyobudi (Jakarta, IDN), Maria Goretti Marianti Purwanto (Surabaya, IDN), Juris Burlakovs (Kalmar, SWE), Maizirwan Mel (Kuala Lumpur, MYS), Praptiningsih Gamawati Adinurani (Madiun, IDN), and Zane Vincēviča-Gaile (Riga, LVA)

Sponsors: DAAD (Deutschland Akademische Austausch Dienst), Sciencewerke, Bioneer, Indolab Utama, Enseval Medika Prima, Megah Sejahtera Scientific, and APD (Alumni Portal Deutschland)

Conference website: event.ubaya.ac.id/nrls

Published: 11 September 2017

ISSN: 2413-0877

Indexing: NRLS Conference Proceedings are indexed in Web of Science (by Clarivate Analytics, formerly Thomson Reuters, and ISI) as of 29 December 2017.

Table of Contents

INTERNATIONAL CONFERENCE ON NATURAL RESOURCES AND LIFE SCIENCES (NRLS-2016)

102 DOWNLOADS

[Download fulltext](#)

Preface

INTERNATIONAL CONFERENCE ON NATURAL RESOURCES AND LIFE SCIENCES (NRLS-2016)

82 DOWNLOADS

[Download fulltext](#)

Scientific and Editorial (S & E) Board

INTERNATIONAL CONFERENCE ON NATURAL RESOURCES AND LIFE SCIENCES (NRLS-2016)

139 DOWNLOADS

[Download fulltext](#)

Action Research into a Flood Resilient Value Chain – Biochar-Based Organic Fertilizer Doubles Productivity of Pea in Udayapur, Nepal

INTERNATIONAL CONFERENCE ON NATURAL RESOURCES AND LIFE SCIENCES (NRLS-2016)

Pages 1-19 • Anu Joshi Shrestha, Bishnu Hari Pandit

171 DOWNLOADS

[Download fulltext](#)

Comparison of the Main Bioactive Compounds and Antioxidant Activity from Garlic Water-soluble and Garlic Oil

INTERNATIONAL CONFERENCE ON NATURAL RESOURCES AND LIFE SCIENCES (NRLS-2016)

Pages 20-34 • Ardhia Deasy Rosita Dewi, Joni Kusnadi, Wen-Ling Shih

248 DOWNLOADS

[Download fulltext](#)

Antioxidant Acitivity in Various Processed Products of Inferior Local Tubers (*Dioscorea* sp. L.)

INTERNATIONAL CONFERENCE ON NATURAL RESOURCES AND LIFE SCIENCES (NRLS-2016)

Pages 35-40 • Ari Yuniastuti, Retno Sri Iswari, R. Susanti

151 DOWNLOADS

[Download fulltext](#)

Synthesis and Characterization of TNTs/Polyaniline Composite as Photocatalyst Degradation of Rhodamin B by Visible Light

INTERNATIONAL CONFERENCE ON NATURAL RESOURCES AND LIFE SCIENCES (NRLS-2016)

Pages 41-50 • Atik Setyani, Sri Wahyuni, Sigit Priatmoko, Emas Agus Prastyo Wibowo, Nur Amin

105 DOWNLOADS

[Download fulltext](#)

Two Antibacterial Compounds: Velutin and 4- (Hydroxy (Oxiran-2-yl)Methyl)-2-Methoxyphenol from the Stem Bark of *Drimys arfakensis* Gibbs.

INTERNATIONAL CONFERENCE ON NATURAL RESOURCES AND LIFE SCIENCES (NRLS-2016)

Pages 51-62 • Bimo Budi Santoso, Hidelisa Padua Hernandez, Evelyn B Rodriguez, Ida Farida Dalmacio

129 DOWNLOADS

[Download fulltext](#)

Extraction and Toxicity Assay of Mycotoxin from Entomopathogenic Fungi Isolate of Kusuma Agrowisata Orchard Batu, Jawa Timur, Indonesia

INTERNATIONAL CONFERENCE ON NATURAL RESOURCES AND LIFE SCIENCES (NRLS-2016)

Pages 63-74 • Derdy Janli, Maria Goretti M. Purwanto, Ida Bagus Artadana, Theresia Desy Askitosari

173 DOWNLOADS

[Download fulltext](#)

Solar Driven Photocatalytic Fuel Cells: an Environmentally Friendly Innovation of Power Plant Technology as Energy Source

INTERNATIONAL CONFERENCE ON NATURAL RESOURCES AND LIFE SCIENCES (NRLS-2016)

Pages 75-80 • Emas Agus Prastyo Wibowo, Navela Rahma Aji, Nuni Widiarti, Cepi Kurniawan

132 DOWNLOADS

[Download fulltext](#)

[Back to top](#)

A Glimpse into the Biosynthesis of Terpenoids

INTERNATIONAL CONFERENCE ON NATURAL RESOURCES AND LIFE SCIENCES (NRLS-2016)

Pages 81-98 • Ingy I. Abdallah, Wim J. Quax

588 DOWNLOADS

[Download fulltext](#)

Transcription Pattern of Catalase Gene from *Gynostemma pentaphyllum* (Thunb.) Makino during Various Abiotic Stresses

INTERNATIONAL CONFERENCE ON NATURAL RESOURCES AND LIFE SCIENCES (NRLS-2016)

Pages 99-109 • Johan Sukweenadhi, Yu-Jin Kim, Deok-Chun Yang

104 DOWNLOADS

[Download fulltext](#)

Drying Kinetics of *Curcuma xanthorrhiza* Roxb.

INTERNATIONAL CONFERENCE ON NATURAL RESOURCES AND LIFE SCIENCES (NRLS-2016)

Pages 110-117 • Lanny Sapei, Elieser Taringan, Lie Hwa, Violita Putri Halim, Fhelix August Soebiantoro

101 DOWNLOADS

[Download fulltext](#)

Water Sustainability: Emerging Trends for Water Quality Management

INTERNATIONAL CONFERENCE ON NATURAL RESOURCES AND LIFE SCIENCES (NRLS-2016)

Pages 118-130 • Lieke Riadi

146 DOWNLOADS

[Download fulltext](#)

Isolation and Screening of Indigenous Fungus Producing Lignin Peroxidase from the Cocoa Plantation in Sepawon Kediri Regency Indonesia

INTERNATIONAL CONFERENCE ON NATURAL RESOURCES AND LIFE SCIENCES (NRLS-2016)

Pages 131-138 • Liling Delila, Evi Susanti, Eli Hendrik Sanjaya

165 DOWNLOADS

[Download fulltext](#)

Cloning and Over-expression of *xynB* Gene of *Bacillus subtilis* subsp. *spizizenii* W23 into *Escherichia coli* Origami Host Cells

INTERNATIONAL CONFERENCE ON NATURAL RESOURCES AND LIFE SCIENCES (NRLS-2016)

Pages 139-149 • Mariana Wahjudi, Catherina ., Nita Marcelia Wangunhardjo, Ernest Suryadjaja, Xavier Daniel

159 DOWNLOADS

[Download fulltext](#)

The Utilization of Metroxylon Sago (*Rottb.*) Dregs for Low Bioethanol as Fuel Households Needs in Papua Province Indonesia

INTERNATIONAL CONFERENCE ON NATURAL RESOURCES AND LIFE SCIENCES (NRLS-2016)

Pages 150-157 • Numberi Johni Jonatan, Arifla Ekayuliana, I Made Kartika Dhiputra, Yulianto Sulisty Nugroho

120 DOWNLOADS

[Download fulltext](#)

Composting of Corn By-Product using EM4 and Microorganism *Azotobacter* sp. as Composting Organism

INTERNATIONAL CONFERENCE ON NATURAL RESOURCES AND LIFE SCIENCES (NRLS-2016)

Pages 158-166 • Nuniek Hendriani, Sri Rachmania Juliastuti, Hamida Nuur Masetya, Imam Tianto Aditiyas Saputra

200 DOWNLOADS

[Download fulltext](#)

Superoxide Dismutase Levels of Operator Gas Stations in Semarang, Central Java, Indonesia.

INTERNATIONAL CONFERENCE ON NATURAL RESOURCES AND LIFE SCIENCES (NRLS-2016)

Pages 167-172 • Nur Kusuma Dewi, Ari Yuniastuti

107 DOWNLOADS

[Download fulltext](#)

Somatic Embryo from Basal Leaf Segments of *Vanda tricolor* Lindl. var. *pallida*

INTERNATIONAL CONFERENCE ON NATURAL RESOURCES AND LIFE SCIENCES (NRLS-2016)

Pages 173-179 • Popy Hartatie Hardjo, Wina Dian Savitri

152 DOWNLOADS

[Download fulltext](#)

Efficiency Analysis of Production Factors Utilization in Upland Rice Farming

INTERNATIONAL CONFERENCE ON NATURAL RESOURCES AND LIFE SCIENCES (NRLS-2016)

Pages 180-187 • Rohmad Budiono, Praptiningsih Gamawati Adinurani

114 DOWNLOADS

[Download fulltext](#)

In Vitro Study of Potato (*Solanum tuberosum* L.) Tolerant to the Drought Stress

INTERNATIONAL CONFERENCE ON NATURAL RESOURCES AND LIFE SCIENCES (NRLS-2016)

Pages 188-192 • Bilter Anton Sirait, Rosa Charloq

183 DOWNLOADS

[Download fulltext](#)

Organic Fertilizer from Bioethanol Solid Waste, Agricultural Waste, and Banana Peels Waste by Bio-act EM4 and *Aspergillus niger*

INTERNATIONAL CONFERENCE ON NATURAL RESOURCES AND LIFE SCIENCES (NRLS-2016)

Pages 193-201 • Sri Rachmania Juliastuti, Delftya Enhaperdhani, Rizka Uswatun Hasanah

228 DOWNLOADS

[Download fulltext](#)

Intake Pericarp of *Garcinia mangostana* L. Extract Inhibited Oxidative Stress on Wistar Rat Hyperglycemic through the Increased of Superoxide Dismutase and

INTERNATIONAL CONFERENCE ON NATURAL RESOURCES AND LIFE SCIENCES (NRLS-2016)

Pages 202-207 • Sri Wahjuni, Anak Agung Istri Ayu Mayun Laksmiwati, Ni Made Puspawati

99 DOWNLOADS

[Download fulltext](#)

The Role of Heavy Metals-Resistant Bacteria *Acinetobacter* sp. in Copper Phytoremediation using *Eichhornia crasippes* [(Mart.) Solms]

INTERNATIONAL CONFERENCE ON NATURAL RESOURCES AND LIFE SCIENCES (NRLS-2016)

Pages 208-220 • Wahyu Irawati, Adolf Jan Nexson Parhusip, Nida Sopiah, Juniche Anggeliqne Tnunay

217 DOWNLOADS

[Download fulltext](#)

[Back to top](#)