

PAPER • OPEN ACCESS

Optimisation of subtractive rapid prototyping process parameters using response surface methodology

To cite this article: T J Suteja and M A Hadiyat 2019 *IOP Conf. Ser.: Mater. Sci. Eng.* **703** 012022

View the [article online](#) for updates and enhancements.

Optimisation of subtractive rapid prototyping process parameters using response surface methodology

T J Suteja¹ and M A Hadiyat²

¹Manufacturing Engineering Department, Faculty of Engineering, University of Surabaya, Raya Kalirungkut, Surabaya, Indonesia

²Industrial Engineering Department, Faculty of Engineering, University of Surabaya, Raya Kalirungkut, Surabaya, Indonesia

E-mail: jayasuteja@staff.ubaya.ac.id

Abstract. Subtractive rapid prototyping machine is the most suitable tool to manufacture a polymer based prosthetic part because it is able to achieve a low surface roughness value for a complex and customised part. Many investigations have been conducted to explain the relation among the surface roughness value, the material rate removal, and the subtractive rapid prototyping process parameters. It is important to find the optimum process parameters in order to achieve the most efficient and productive process. However, none of the research found in the literature optimises the subtractive rapid prototyping process parameters in fabricating polycarbonate part. Therefore, this research aims to find the optimum process parameters to achieve the lowest arithmetic average of surface roughness value of the polycarbonate part in maximum material removal rate. In this research, the response surface methodology is implemented to optimised feed rate, step-over, and depth of cut of the subtractive rapid prototyping process. This research finds the feed rate, step-over, and depth of cut values that can be used to achieve the best result in manufacturing of polycarbonate material.

1. Introduction

Polycarbonate material has been applied for various prosthetic products due to the fact that it is strong, tough, and transparent thermoplastic material. A prosthetic product is mostly an intricate product and customized for each patient. As a result, the feasible process to fabricate the product is by using rapid prototyping. Rapid prototyping process can be performed by using subtractive or additive methods. Subtractive rapid prototyping is carried out by implementing high speed milling process to cut the raw material in order to produce the part. Meanwhile, additive rapid prototyping carried out by depositing materials layer by layer to build the shape of the part. For a certain type of prosthetic parts such as a socket of prosthetic leg that require a specific surface roughness and dimensional accuracy, the subtractive rapid prototyping is preferable to be implemented. The main purpose of subtractive rapid prototyping is to achieve the required minimum surface roughness and dimensional error in the maximum material rate removal. Therefore, the optimisation of subtractive rapid prototyping process parameters in fabricating polycarbonate materials is considered as a significant problem and needs to be tackled. This paper only describes the optimisation of subtractive rapid prototyping processes to achieve the maximum material removal rate and the minimum surface roughness. The novelty of this research lies in optimising the subtractive rapid prototyping process parameters to achieve the



maximum material removal rate and half of the arithmetic average of surface roughness value resulted by using additive rapid prototyping process.

2. Literature review

Limited research found in the literature discussed rapid prototyping process of polycarbonate. The possibility to fabricate a thin fin of polycarbonate material by using subtractive rapid prototyping is investigated by Nieminem, I., et. Al [1]. However, they did not investigate the influence of the depth of cut and step-over on the surface roughness and the dimensional error of the polycarbonate material.

Other researchers conduct an investigation on the influence of high speed milling process parameters on metal materials. The research by Albertí, M., et. al., Vivancos, J., Urbanski, J.P., Oktem, H., et al., The, J.S., et. al., Ma, W., et.al., Zeroudi, N. and Fontaine, M., and Shimana, K., et. al. show that material removal rate, surface roughness, and dimension error of a material are affected by physical and mechanical characteristics of the material, depth of cut, step-over, feed rate, cutting speed, cut type, interpolation type, tool holder type, physical and mechanical characteristics of the tool, vibration, controller of the machine, and computer aided manufacturing software [2, 3, 4, 5, 6, 7, 8, 9].

Suteja, T.J. develops several models to show the influence of the depth of cut, feed rate, and step-over on the vertical and horizontal surface roughness, vertical length error, horizontal length error, and depth error of polycarbonate material in subtractive rapid prototyping [10, 11]. The models show that the vertical surface roughness is positively affected by the feed rate, the step-over, and the depth of cut. The parameter that has the most influence on the vertical surface roughness is the step-over. In addition, the depth of cut and the interaction between the step-over and the depth of cut has a positive influence on the horizontal surface roughness.

The expected surface roughness values to optimize the process parameters are determined based on literature review. As the additive rapid prototyping can also be used to fabricate a product made of polycarbonate, then a review of previous research is conducted to investigate the achieved surface roughness of part fabricated by using an additive rapid prototyping.

Ippolito, R., et. al. compared five methods of additive rapid prototyping [12]. According to Ippolito, R., et. al., the achieved arithmetic average of surface roughness of additive rapid prototyping process is varied in the range between 0.001 to 0.025 mm. In addition, the parallel arithmetic average of surface roughness is lower than the perpendicular feed rate direction.

Fox, J.C., et. al., conduct experiments performed on Laser Powder Bed Fusion type of additive rapid prototyping with the EOS M2701 system using the commercially available Stainless Steel powder [13]. According to their research, the value of arithmetic average of surface roughness increases as overhang angle decreases. The minimum and maximum surface roughness values achieved by using the additive rapid prototyping process are 0.015 to 0.045 mm respectively.

The purpose of this research is particularly for investigating the subtractive rapid prototyping of a polycarbonate prosthetic product. He, Y., et al. implemented Scanning Printing Polishing Casting to fabricate a prosthetic product [14]. Based on their research, the fabrication method can achieve a low arithmetic average of surface roughness (maximum 0.002 mm) and require low cost. However, the method requires more complex process and longer time.

Udroiu, R., et. al., investigate the surface quality for a polymer-based additive rapid prototyping [15]. The additive rapid prototyping machine used is EDEN 350 using PolyJet technology. Based on the result, the arithmetic average of surface roughness values for the PolyJet material jetting process with matte finish were in the range of 0.0005 to 0.015 mm. For the glossy finish, the arithmetic average of surface roughness values in the range of 0.0005 to 0.010 mm. Though PolyJet technology can achieve lower surface roughness, the cost of the process is still high.

The widely used additive rapid prototyping technology is Fused Deposition Modelling because the cost of the technology decreases into feasible price. The research by Kaji, F., et. al. proposes a model of surface roughness in Fused Deposition Modelling especially for the geometry of the cusp profile [16]. The result of the research shows that the layer thickness generally has a deep effect on the surface roughness. The minimum surface roughness value, which is achieved by using 0.125 mm layer thickness, is 0.015 mm.

Based on the literature review, the aim of this research is to optimize the process parameters in subtractive rapid prototyping to achieve the half of the arithmetic average of surface roughness values of the Fused Deposition Modelling, which is maximum of 0.0075 mm (7.5 μm), in the maximum material rate removal of polycarbonate material.

3. Methodology

Response Surface Methodology is implemented in this research to develop several mathematical models and validate the models. The shape and the dimensions of the polycarbonate material specimen fabricated by using the subtractive rapid prototyping process are shown in Fig. 1. Roland MDX 40 is used as the subtractive rapid prototyping machine. The machine is assisted by CAM Modeler Player 4.0 software to generate the tool path from the STL format model. A carbide solid square end mill with 5 mm diameter is used as the cutting tool. In order to move the cutting tool, the software uses zigzag cut type.

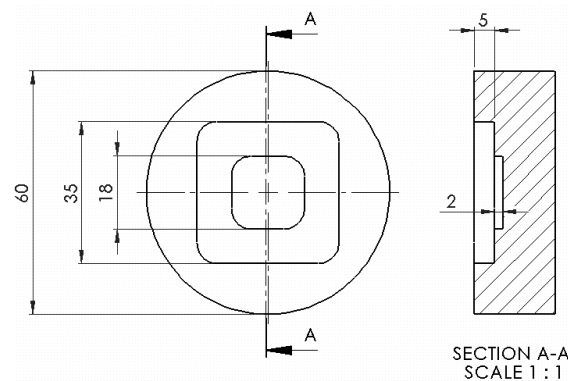


Figure 1. The specimen (in mm).

Different parameter values for roughing and finishing processes are determined based on the tools catalogue and interview with the expert. Table 1 shows the roughing parameter value of the subtractive rapid prototyping. Three levels of value for depth of cut, feed rate, and step-over are designed for finishing process. The value of each level for each parameter as shown in Table 2 is determined based on the machine specification, literature study, and the preliminary experiment. The subtractive rapid prototyping is performed under dry operating condition. The spindle for finishing process is 10000 rpm and the entry speed for finishing process is 4 mm/s. The polycarbonate material is assumed to be always homogeneous. Then, the cutting temperature is assumed to be always constant. Finally, the tool wear is assumed to occur after performing three roughing and finishing processes.

Table 1. Parameter value for roughing.

Feed Rate	: 12 mm/s
Entry Speed	: 4 mm/s
Spindle Speed	: 8500 rpm
Depth of Cut	: 0.37 mm
Step-over	: 1 mm

Table 2. Parameter value for finishing.

	Low	Middle	High
Depth of Cut [mm]	0.1	0.235	0.37
Feed Rate [mm/s]	12	14.5	17
Step-over [mm]	0.3	0.65	1

Material rate removal and arithmetic average of surface roughness are investigated in this research as the responses. To calculate the material rate removal, the time needed to fabricate the specimen is

measured by using a stopwatch. The arithmetic average of surface roughness is measured by using Mitutoyo SJ 210 with 0.01 μm of accuracy at Industrial Metrology Laboratory of University of Surabaya. Two direction of arithmetic average of surface roughness measurement is conducted, which are horizontal and vertical directions. After the measurement process, the measured data is analyzed by using MINITAB release 14 software.

4. Results and discussion

The design of the first order experiment are shown in Table 3. The first order experiment involves all two level factors using 2^3 factorial design with additional 5 center points. The result of the first order experiment is showed in Table 3. RaVer is vertical arithmetic average of surface roughness [μm], RaHor is horizontal arithmetic average of surface roughness [μm], and MRR is material rate removal [mm^3/s].

Table 3. First order experiment results.

Std Order	Run Order	Feed Rate [mm/s]	Step-over [mm]	Depth of Cut [mm]	RaHor [μm]	RaVer [μm]	MRR [mm^3/s]
11	1	14.50	0.65	0.235	3.13	7.25	1.221673
13	2	14.50	0.65	0.235	3.22	7.83	1.220947
2	3	17.00	0.30	0.100	2.53	4.46	0.266056
12	4	14.50	0.65	0.235	3.18	8.65	1.222763
7	5	12.00	1.00	0.370	4.88	12.39	2.607133
9	6	14.50	0.65	0.235	2.89	7.83	1.220637
3	7	12.00	1.00	0.100	3.64	12.01	0.704914
5	8	12.00	0.30	0.370	3.00	4.70	0.801036
10	9	14.50	0.65	0.235	3.55	8.33	1.217333
6	10	17.00	0.30	0.370	4.18	4.59	0.983487
1	11	12.00	0.30	0.100	2.81	3.60	0.215947
4	12	17.00	1.00	0.100	4.30	12.08	0.868179
8	13	17.00	1.00	0.370	4.49	12.01	3.213400

Based on the result of the validation step, the first order models are not adequate as a linear regression model. For that reason, the second order experiment for material removal rate, vertical arithmetic average of surface roughness, and horizontal arithmetic average of surface roughness must be conducted. The central composite design is used to determine the number of the second order experiment run. The design and result of the second order experiment is shown in Table 4.

By using the experiment result shown in Table 4, the prediction model of material removal rate, vertical arithmetic average of surface roughness, and horizontal arithmetic average of surface roughness are shown in Eq. 1, Eq. 2, and Eq. 3.

$$\text{MRR} = 0.462 - 0.0260 \times F - 0.901 \times S - 2.833 \times D - 0.00067 \times F^2 - 0.162 \times S^2 - 0.345 \times D^2 + 0.0761 \times F \times S + 0.2129 \times F \times D + 7.804 \times S \times D \quad (1)$$

$$\text{Ra}_{\text{hor}} = 2.61 + 0.007 \times F - 0.41 \times S + 1.31 \times D + 0.0038 \times F^2 + 1.450 \times S^2 + 12.46 \times D^2 - 0.067 \times F \times S - 0.485 \times F \times D + 3.73 \times S \times D \quad (2)$$

$$\text{Ra}_{\text{ver}} = -8.9 + 0.88 \times F + 17.65 \times S + 6.4 \times D - 0.0146 \times F^2 + 3.34 \times S^2 + 13.9 \times D^2 - 0.521 \times F \times S - 0.59 \times F \times D - 4.10 \times S \times D \quad (3)$$

where F is feed rate [mm/s], S is step-over [mm], and D is depth of cut [mm]. According to the result of the validation step for the second order experiment, the developed equations can be used as the best prediction model.

The aim of this research is to determine the feed rate, step over, and depth of cut in subtractive rapid prototyping to achieve the maximum material rate removal of polycarbonate material and the arithmetic average of surface roughness less than or equal to 7.5 μm . The multiple response optimizer based on desirability approach is used to maximize the material rate removal and minimize the horizontal and vertical arithmetic average of surface roughness [17]. The result shows that the optimum condition achieved when the feed rate, step-over, and depth of cut are set in 18.70 mm/s, 0.54 mm, and 0.46 mm respectively. The maximum material removal rate achieved by implementing these parameters is 2.3672 mm^3/s . The achieved horizontal and vertical arithmetic averages of surface roughness are 3.5842 μm and 7.4867 μm respectively.

Table 4. Second order experiment results.

Std Order	Run Order	Feed Rate [mm/s]	Step Over [mm]	Depth of Cut [mm]	RaHor [μm]	RaVer [μm]	MRR [mm^3/s]
18	1	14.5000	0.65000	0.235000	3.64	8.20	1.33510
19	2	14.5000	0.65000	0.235000	3.36	8.73	1.22121
10	3	18.7045	0.65000	0.235000	2.80	7.76	1.47727
15	4	14.5000	0.65000	0.235000	2.74	7.57	1.22204
20	5	14.5000	0.65000	0.235000	2.72	9.67	1.22152
13	6	14.5000	0.65000	0.007958	3.33	9.53	0.04138
14	7	14.5000	0.65000	0.462042	3.90	9.08	2.40249
5	8	12.0000	0.30000	0.370000	3.71	5.05	0.79896
11	9	14.5000	0.06137	0.235000	2.35	0.88	0.11581
8	10	17.0000	1.00000	0.370000	4.29	13.21	3.21431
6	11	17.0000	0.30000	0.370000	3.51	5.38	0.98372
2	12	17.0000	0.30000	0.100000	3.10	4.88	0.26597
9	13	10.2955	0.65000	0.235000	3.28	8.90	0.97840
7	14	12.0000	1.00000	0.370000	5.03	13.72	2.61059
12	15	14.5000	1.23863	0.235000	4.60	18.61	2.25131
4	16	17.0000	1.00000	0.100000	3.48	12.50	0.86892
3	17	12.0000	1.00000	0.100000	3,26	13,20	0.70532
16	18	14.5000	0.65000	0.235000	2,94	7,41	1.21149
1	19	12.0000	0.30000	0.100000	2,95	2,77	0.21595
17	20	14.5000	0.65000	0.235000	3,42	8,76	1.22183

5. Conclusions

The goal of this research is to optimize the subtractive rapid prototyping parameters for polycarbonate material by implementing the response surface methodology in order to achieve the maximum material rate removal of polycarbonate material and achieve the horizontal and vertical arithmetic average of surface roughness less than or equal to 7.5 μm at the same time. The optimized feed rate, step over, and depth of cut for the subtractive rapid prototyping are found to be 18.70 mm/s, 0.54 mm, and 0.46 mm respectively. By implementing these parameters, the achieved material removal rate is 2.3672 mm^3/s and the maximum achieved vertical arithmetic average of surface roughness is 7.4867 μm .

References

- [1] Nieminen I, Paro J and Kauppinen V 1996 High-speed milling of advanced materials *J. Mater. Process. Technol.* **56(1-4)** 24-36
- [2] Albertí M, Ciurana J and Rodríguez C 2007 Experimental analysis of dimensional error vs. cycle time in high-speed milling of aluminium alloy *Int. J. Mach. Tools Manuf.* **47(2)** 236-246
- [3] Vivancos J, Luis C, Costa L and Ortiz J 2004 Optimal machining parameters selection in high speed milling of hardened steels for injection moulds *J. Mater. Process. Technol.* **155** 1505-1512
- [4] Urbanski J, Koshy P, Dewes R and Aspinwall D 2000 High speed machining of moulds and dies for net shape manufacture *Mater. Des.* **21(4)** 395-402
- [5] Oktem H, Erzurumlu T and Kurtaran H 2005 Application of response surface methodology in the optimization of cutting conditions for surface roughness *J. Mater. Process. Technol.* **170(1-2)** 11-16
- [6] The J, Candra S and Aquarista Y 2008 Optimasi proses pemesinan milling fitur pocket material baja karbon rendah menggunakan response surface methodology *Jurnal Ilmiah Teknik Mesin Universitas Kristen Petra* **10(1)** 1 -7
- [7] Ma W, He G, Zhu L and Guo L 2016 Tool deflection error compensation in five-axis ball-end milling of sculptured surface *Int. J. Adv. Manuf. Technol.* **84(5-8)** 1421-1430
- [8] Zeroudi N and Fontaine M 2015 Prediction of tool deflection and tool path compensation in ball-end milling *Journal of Intelligent Manufacturing* **26(3)** 425-445
- [9] Shimana K, KondoE, Karashima H, Nakao M and Yamashita S 2016 An approach to real-time compensation of machining error using deflection of tool estimated from cutting forces in end-milling process *Journal of Advanced Mechanical Design, Systems, and Manufacturing* **10(2)** 1-10
- [10] Suteja T 2016 The influence of depth of cut, feed rate and step-over on surface roughness of polycarbonate material in subtractive rapid prototyping *Lecture Notes in Electrical Engineering* **365** 409-414
- [11] Suteja T 2017 The influence of depth of cut, feed rate, and step-over on dimensional accuracy in subtractive rapid prototyping of polycarbonate material *IOP Conf. Ser.: Mater. Sci. Eng.* **187** 012033.
- [12] Ippolito R, Iuliano L and Gatto 1995 A benchmarking of rapid prototyping techniques in terms of dimensional accuracy and surface finish *CIRP Annals-Manufacturing Technology* **44(1)** 157-160
- [13] Fox J, Moylan S and Lane B 2016 Effect of process parameters on the surface roughness of overhanging structures in laser powder bed fusion additive manufacturing *Procedia CIRP* **45** 131-134
- [14] He Y, Xue G and Fu J 2014 Fabrication of low cost soft tissue prostheses with the desktop 3D printer *Scientific reports* **4** 6973
- [15] Udriou R, Braga I and Nedelcu A 2019 Evaluating the Quality Surface Performance of Additive Manufacturing Systems: Methodology and a Material Jetting Case Study *Materials* **12(6)** 995
- [16] Kaji F and Barari A 2015 Evaluation of the surface roughness of additive manufacturing parts based on the modelling of cusp geometry *IFAC-PapersOnLine* **48(3)** 658-663
- [17] Candiotti L, De Zan M, Camara M and Goicoechea H 2014 Experimental design and multiple response optimization using the desirability function in analytical methods development *Talanta* **124** 123-138



**INTERNATIONAL CONFERENCE ON
INFORMATICS, TECHNOLOGY, AND
ENGINEERING**

22-23 AUGUST 2019

A collaborative activity jointly organised by:



**FACULTY OF ENGINEERING
UNIVERSITAS SURABAYA**



**THE UNIVERSITY
of ADELAIDE**



PROCEEDINGS BOOK

***Enhancing Engineering
Innovation Towards
A Greener Future***

VENUE:
THE ANVAYA BEACH RESORT BALI
Jl. Kartika Plaza, Tuban, Kuta,
Kabupaten Badung, Bali 80361
Phone : (+62361) 2090477
www.theanvayabali.com

PUBLISHER:
UNIVERSITAS SURABAYA
Jl. Raya Kalirungkut
Surabaya 60293
Phone. (62-31) 298-1344
E-mail: ppi@unit.ubaya.ac.id

Faculty of Engineering - Universitas Surabaya

Preface

Welcome Remarks,
Chair of the Steering Committee

It is a great pleasure to welcome all of you to Bali and to the International Conference on Informatics, Technology, and Engineering 2019 (InCITE 2019) held by the Faculty of Engineering, University of Surabaya (UBAYA) in collaboration with The University of Adelaide, Australia and Sirindhorn International Institute of Technology (Thammasat University), Thailand. The first InCITE has been successfully held in Bali, Indonesia in 2017. We are very delighted to host the second InCITE here in Bali, Indonesia again.

There are more than 75 presentations in this conference. We welcome leading experts not only from Indonesia, but also from different parts of the world. The experts will share the knowledge and experiences in the fields of informatics, technology, science, and engineering. The main theme of this conference is **Enhancing Engineering Innovation Towards A Greener Future** in response to several world challenges including sustainable development, global convergence of information and communications technologies, climate change and global warming as well as the depletion of unrenewable natural resources. We hope this conference will provide you a good opportunity to get to know each other better and consolidate bonds of friendship and mutual trust.

We would like to express our sincere gratitude to the Keynote and Plenary speakers, International Scientific Committee, Steering Committee, and Organising Committee for their huge efforts to make this conference successful.

Thank you all for your support and attendance at InCITE 2019. Please enjoy the conference and Bali !

Asst. Prof. Djuwari, Ph.D.

Preface

Welcome Remarks,
Chair of The Organizing Committee

Welcome to Bali, Indonesia to all delegates and presenters. It is my pleasure and privilege to welcome all of you to the 2nd (second) International Conference on Informatics, Technology, and Engineering 2019 (InCITE 2019) held by the Faculty of Engineering, University of Surabaya (UBAYA) in collaboration with The University of Adelaide, Australia and Sirindhorn International Institute of Technology (Thammasat University), Thailand.

InCITE 2019 has received more than 75 papers to be presented in this conference. All papers represent four following parallel clusters: Green Design and Innovation, Green Manufacturing and Green Processes, Power System and Green Energy Management, and The Role of IT in Innovation Enhancement. Each cluster supports the main theme of the conference, which is **Enhancing Engineering Innovation Towards A Greener Future**. The engineering innovation is the key to increase our awareness in maintaining the sustainable growth and development in the world.

The Organising Committee of InCITE 2019 would like to express our sincere gratitude for the tremendous supports and contributions from many parties. The supports from The Faculty of Engineering of UBAYA, keynote and plenary speakers, our International Scientific Committee, the Steering and Organising Committees are really acknowledged.

The last but not the least, thank you for your supports, enjoy the conference and we hope through this meeting all of you can extend your networks and collaborations.

Asst. Prof. Putu Doddy Sutrisna, Ph.D.

Conference Organizers

SCIENTIFIC COMMITTEE

- Prof. Willy Susilo, Ph.D. (University of Wollongong, AUSTRALIA)
- Prof. Dr. Anton Satria Prabuwono (King Abdulaziz University, SAUDI ARABIA)
- Assoc. Prof. Oki Muraza, Ph.D. (King Fahd University of Petroleum & Minerals, KINGDOM OF SAUDI ARABIA)
- Prof. Ravindra S. Goonetilleke, Ph.D. (Hong Kong University of Science & Technology, PRC)
- Assoc. Prof. Tan Kay Chuan, Ph.D. (National University of Singapore, SINGAPORE)
- Asst. Prof. Aldy Gunawan, Ph.D. (Singapore Management University, SINGAPORE)
- Asst. Prof. Hendry Raharjo, Ph.D. (Chalmers University of Technology, SWEDEN)
- Assoc. Prof. Dr. A. F. M. Saifuddin Saif (American International University, BANGLADESH)
- Asst. Prof. Itthisek Nilkhamhang, Ph.D. (Sirindhorn International Institute of Technology, THAILAND)
- Assoc. Prof. Akawut Siriruk, Ph.D. (Suranaree University of Technology, THAILAND)
- Assoc. Prof. Avirut Chinkulkijniwat, Ph.D. (Suranaree University of Technology, THAILAND)
- Assoc. Prof. Peerapong Uthansakul, Ph.D. (Suranaree University of Technology, THAILAND)
- Assoc. Prof. Dr. Andi Cakravastia Arisaputra Raja (Institut Teknologi Bandung, INDONESIA)
- Assoc. Prof. Dr. Anas Maruf (Institut Teknologi Bandung, INDONESIA)
- Assoc. Prof. Yassierli, Ph.D. (Institut Teknologi Bandung, INDONESIA)
- Prof. Dr. Ali Altway (Institut Teknologi Sepuluh Nopember, INDONESIA)
- Prof. Dr-Ing. I Made Londen Batan (Institut Teknologi Sepuluh Nopember, INDONESIA)
- Assoc. Prof. Setiyo Gunawan, Ph.D. (Institut Teknologi Sepuluh Nopember, INDONESIA)
- Prof. Renanto Handogo, Ph.D. (Institut Teknologi Sepuluh Nopember, INDONESIA)
- Prof. Mauridhi Hery Purnomo, Ph.D. (Institut Teknologi Sepuluh Nopember, INDONESIA)
- Prof. Nur Iriawan, Ph.D. (Institut Teknologi Sepuluh Nopember, INDONESIA)
- Prof. I Nyoman Pujawan, Ph.D. (Institut Teknologi Sepuluh Nopember, INDONESIA)
- Asst. Prof. Budi Hartono, Ph.D. (Universitas Gadjah Mada, INDONESIA)
- Prof. Sarjiya, Ph.D. (Universitas Gadjah Mada, INDONESIA)
- Asst. Prof. Nemuel Daniel Pah, Ph.D. (Universitas Surabaya, INDONESIA)
- Assoc. Prof. Markus Hartono, Ph.D. (Universitas Surabaya, INDONESIA)
- Prof. Joniarto Parung, Ph.D. (Universitas Surabaya, INDONESIA)
- Prof. Lieke Riadi, Ph.D. (Universitas Surabaya, INDONESIA)

Conference Organizers

STEERING COMMITTEE

Chair:

Asst. Prof. Djuwari, Ph.D.

Honorary Members:

Prof. David Lewis, Ph.D.

Prof. Joniarto Parung, Ph.D.

Prof. Lieke Riadi, Ph.D.

Asst. Prof. Dr. Steve Kardinal Jusuf

Asst. Prof. Dr. Itthisek Nilkhamhang

Members:

Assoc. Prof. Amelia Santoso, Ph.D.

Mr. Agung Prayitno

Assoc. Prof. Emma Savitri, Ph.D.

Assoc. Prof. Markus Hartono, Ph.D., CHFP.

Assoc. Prof. Budi Hartanto, Ph.D.

Mr. Sunardi Tjandra

Assoc. Prof. Eric Wibisono, Ph.D.

Asst. Prof. Nemuel Daniel Pah, Ph.D.

Assoc. Prof. Elieser Tarigan, Ph.D.

Assoc. Prof. Jaya Suteja, Ph.D.

Prof. Joniarto Parung, Ph.D.

Assoc. Prof. Hudiyo Firmanto, Ph.D.

Assoc. Prof. Restu Kartiko Widi, Ph.D.

ORGANIZING COMMITTEE

Chair :Asst. Prof. Putu Doddy Sutrisna, Ph.D.

Vice Chair :Dr. Delta Ardy Prima

Secretary :Ms. Aprilia Karina

Treasurers :Ms. Dhiani Tresna Absari

Secretariat :Maria Agatha E.Gunawan, Ph.D.

Asst. Prof. Lanny Sapei, Ph.D.

Mr. Rahman Dwi Wahyudi

Ms. Yenny Sari

Ms. Yuana Elly Agustin

Ms. Susana Limanto

Ms. Monica Wideasri

Conference Organizers

Program	:Mr. Yunus Fransiscus Ms. Melissa Angga Mr. I Made Ronyastra Mr. Henry Hermawan Mr. Felix Handani Ms. Indri Hapsari Mr. Mochammad Arbi Hidayat
Website	:Mr. Daniel Soesanto Mr. Marcellinus Ferdinand Suciadi
Design	:Ms. Tyrza Adelia
Sponsorship	:Assoc. Prof. Susila Candra, Ph.D.
Logistic:	Mr. Arief Rachman Hakim Mr. Muhamad Yulham Effendy

REVIEWER

- Prof. David Lewis, Ph.D. (University of Adelaide, AUSTRALIA)
- Prof. Willy Susilo, Ph.D. (University of Wollongong, AUSTRALIA)
- Dr. Jingwei Hou (University of Queensland, AUSTRALIA)
- Asst. Prof. Hendry Raharjo, Ph.D. (Chalmers University of Technology, SWEDEN)
- Prof. Dr. Anton Satria Prabuwono (King Abdulaziz University, SAUDI ARABIA)
- Assoc. Prof. Oki Muraza, Ph.D. (King Fahd University of Petroleum & Minerals, KINGDOM OF SAUDI ARABIA)
- Prof. Dr. Winarto Kurniawan (Tokyo Institute of Technology, JAPAN)
- Dr. Wahyudiono (Nagoya University, JAPAN)
- Prof. Ravindra S. Goonetilleke, Ph.D. (Hong Kong University of Science & Technology, PRC)
- Asst. Prof. Dr. Steve Kardinal Jusuf (Singapore Institute of Technology, SINGAPORE)
- Assoc. Prof. Tan Kay Chuan, Ph.D. (National University of Singapore, SINGAPORE)
- Asst. Prof. Aldy Gunawan, Ph.D. (Singapore Management University, SINGAPORE)
- Assoc. Prof. Dr. A. F. M. Saifuddin Saif (American International University, BANGLADESH)
- Asst. Prof. Itthisek Nilkhamhang, Ph.D. (Sirindhorn International Institute of Technology, THAILAND)
- Assoc. Prof. Akawut Siriruk, Ph.D. (Suranaree University of Technology, THAILAND)
- Assoc. Prof. Avirut Chinkulkijniwat, Ph.D. (Suranaree University of Technology, THAILAND)
- Assoc. Prof. Peerapong Uthansakul, Ph.D. (Suranaree University of Technology, THAILAND)
- Asst. Prof. Dr. Phuong Lan Tran Nguyen (Can Tho University, VIETNAM)
- Assoc. Prof. Dr. Anas Maruf (Institut Teknologi Bandung, INDONESIA)
- Dr. Khoiruddin (Institut Teknologi Bandung, INDONESIA)
- Assoc. Prof. Dr. Veinardi Suendo (Institut Teknologi Bandung, INDONESIA)

Conference Organizers

REVIEWER

- Assoc. Prof. Dr. Andi Cakravastia Arisaputra Raja (Institut Teknologi Bandung, INDONESIA)
- Assoc. Prof. Yassierli, Ph.D. (Institut Teknologi Bandung, INDONESIA)
- Assoc. Prof. [Dr. Judy Retti B. Witono \(Universitas Parahyangan, INDONESIA\)](#)
- Asst. Prof. Budi Hartono, Ph.D. (Universitas Gadjah Mada, INDONESIA)
- Prof. Sarjiya, Ph.D. (Universitas Gadjah Mada, INDONESIA)
- Asst. Prof. Dr. Hendri Himawan Triharminto (Akademi Angkatan Udara Yogyakarta, INDONESIA)
- Assoc. Prof. Dr. Djoko Budiyanto Setyohadi (Universitas Atmajaya Yogyakarta, INDONESIA)
- Prof. Dr. Ali Altway (Institut Teknologi Sepuluh Nopember, INDONESIA)
- Prof. Renanto Handogo, Ph.D. (Institut Teknologi Sepuluh Nopember, INDONESIA)
- Prof. Mauridhi Hery Purnomo, Ph.D. (Institut Teknologi Sepuluh Nopember, INDONESIA)
- Prof. Nur Iriawan, Ph.D. (Institut Teknologi Sepuluh Nopember, INDONESIA)
- Asst. Prof. Astria Nur Irfansyah, Ph.D. (Institut Teknologi Sepuluh Nopember, INDONESIA)
- Prof. Dr-Ing. I Made Londen Batan (Institut Teknologi Sepuluh Nopember, INDONESIA)
- Assoc. Prof. Setiyo Gunawan, Ph.D. (Institut Teknologi Sepuluh Nopember, INDONESIA)
- Prof. I Nyoman Pujawan, Ph.D. (Institut Teknologi Sepuluh Nopember, INDONESIA)
- Asst. Prof. Rr. Poppy Puspitasari, S, Ph.D (Universitas Negeri Malang, INDONESIA)
- Asst. Prof. Ratna Surya Alwi, S.T., M.Si., Ph.D (Universitas Fajar Makassar, INDONESIA)
- Prof. Joniarto Parung, Ph.D. (Universitas Surabaya, INDONESIA)
- Prof. Lieke Riadi, Ph.D. (Universitas Surabaya, INDONESIA)
- Asst. Prof. Nemuel Daniel Pah, Ph.D. (Universitas Surabaya, INDONESIA)
- Assoc. Prof. Markus Hartono, Ph.D (Universitas Surabaya, INDONESIA)
- Asst. Prof. Dr. Hazrul Iswadi (Universitas Surabaya, INDONESIA)
- Asst. Prof. Gunawan, Ph.D (Universitas Surabaya, INDONESIA)
- Assoc. Prof. Dr. Evy Herowati (Universitas Surabaya, INDONESIA)
- Assoc. Prof. Dr. Amelia Santoso (Universitas Surabaya, INDONESIA)
- Assoc. Prof. Eric Wibisono, Ph.D. (Universitas Surabaya, INDONESIA)
- Asst. Prof. Dr. Joko Siswantoro (Universitas Surabaya, INDONESIA)
- Assoc. Prof. Dr. Budi Hartanto (Universitas Surabaya, INDONESIA)
- Asst. Prof. Dr. Delta Ardy Prima (Universitas Surabaya, INDONESIA)
- Asst. Prof. Jimmy (Universitas Surabaya, INDONESIA)
- Assoc. Prof. Lisana (Universitas Surabaya, INDONESIA)
- Assoc. Prof. Dr. Emma Savitri (Universitas Surabaya, INDONESIA)
- Assoc. Prof. Restu Kartiko Widi, Ph.D. (Universitas Surabaya, INDONESIA)
- Assoc. Prof. Akbarningrum Fatmawati (Universitas Surabaya, INDONESIA)

Conference Organizers

REVIEWER

- Assoc. Prof. Akbarningrum Fatmawati (Universitas Surabaya, INDONESIA)
- Asst. Prof. Putu Doddy Sutrisna, Ph.D. (Universitas Surabaya, INDONESIA)
- Asst. Prof. Djuwari, Ph.D. (Universitas Surabaya, INDONESIA)
- Asst. Prof. Elieser Tarigan, Ph.D. (Universitas Surabaya, INDONESIA)
- Assoc. Prof. The Jaya Suteja, Ph.D (Universitas Surabaya, INDONESIA)
- Assoc. Prof. Dr. Susila Candra (Universitas Surabaya, INDONESIA)
- Asst. Prof. Sunardi Tjandra (Universitas Surabaya, INDONESIA)
- Asst. Prof. Yuwono Budi Pratiknyo (Universitas Surabaya, INDONESIA)

CONFERENCE ORGANIZING COMMITTEE:
FACULTY OF ENGINEERING, UNIVERSITAS SURABAYA
DEAN BUILDING TB 2, RAYA KALIRUNGKUT
SURABAYA, 60293, INDONESIA
PHONE: +62-31-2981150, FAX: +62-31-2981151
E-MAIL: incite@unit.ubaya.ac.id
WEBSITE: <https://incite.ubaya.ac.id>; <http://teknik.ubaya.ac.id>

Table of Content

Preface	i
Conference Organizers	iii
Table of content	viii

Green Design and Innovation

A Systematic Literature Review for Developing Sustainability Assessment Tool: Formulating the State of the Art and Future Direction <i>Y Sari, A Hidayatno, A Suzianti, M Hartono</i>	A-1
---	-----

Perceived Kansei and Performance-Based Usability Impact on Satisfaction for Web- Based Applications <i>M Hartono</i>	A-8
--	-----

Passive Design Implementation as Sustainable Development Approach on Vertical Housing Case Study: Sentra Timur Residence <i>T Riotama and H Herdiansyah</i>	A-14
---	------

Development and Usability Evaluation of Virtual Guide Using Augmented Reality for Candi Gunung Gangsir in East Java <i>I M Ronyastra, I Hapsari and F P Pani</i>	A-19
--	------

Combined Structural Equation Modelling – Artificial Neural Networks Model for Predicting Customer Loyalty <i>M A Hadiyat</i>	A-25
--	------

How the Indonesian Ecologically Conscious Millennials Value Upcycled Clothing? <i>C A P Parung</i>	A-31
---	------

Animated Video as Health Promotion Tool for Community Supplementary Feeding <i>S Limanto, Liliana, S Purba and M Oeitheurisa</i>	A-37
---	------

Slow - Fashion: Case Study of Tenun SeseK as Local Wisdom from Pringgasela, East Lombok, West Nusa Tenggara

N Juniati A-43

Expertise-based decision makers' importance weights for solving group decision making problems under fuzzy preference relations

E Herowati A-49

Measurement of Student Satisfaction and Loyalty Using Service Quality Model for Higher Education (HedQual) at Industrial Engineering Department University of Pelita Harapan

N Hartono, Laurence and B F Tjahjadh A-56

Development Initial Model of Intention to Use Halodoc Application Using PLS-SEM

N Hartono, Laurence and T O Tedja A-63

The Role of Ergonomics in Supporting Supply Chain Performance in Manufacturing Companies: a Literature Review

Sampouw N and Hartono M A-71

Green Dynamic Capability for Enhancing Green Innovations Performance in a Manufacturing Company: a Conceptual Framework

R Amaranti, D Irianto and R Govindaraju A-77

Kansei Engineering Application in Redesigning Carica Packaging to Support Local-Small Industry in Central Java

H Prastawa, M Mahachandra and D A Harman Donida A-84

Organic-Inorganic Nanocomposite Membranes for Molecular Separation and Bioapplications

J Hou, P D Sutrisna, L Li, V Chen A-90

Fluazinam Potential as a Fungicide in Liquid Culture System for the Growth of Haematococcus pluvialis Microalgae

J R Witono, V Novianty, H Santoso, A Miryanti and A J Kumalaputri A-95

Tensile properties of kenaf fiber by alkalization treatment: effect of variations in concentration

Ismojo, K A Zahidah, E Yuanita, E Kustiyah and M Chalid A-103

Green Manufacturing and Green Processes

Regulatory Performance of Two Different Tuning Method for Milk Cooling Control System

R Agustriyanto B-1

A Review of a Machine Design of Chocolate Extrusion Based Co-Rotating Twin Screw Extruder

P Pitayachaval and P Watcharamaisakul B-7

An Empirical Study of How the Deployment of Lean Sigma Can Reduce Its Enemies: Waste, Overburden and Defect

Y Sari, E Wibisono and I Pangkiey B-14

Controlled Release Fertilizer Based on Starch Chitosan Encapsulation

E Savitri, E Purwanto, A N Kodrat and E Yonathan B-20

Assessing Materials from Hoarded Mobile Phones: Hidden E-Waste Subject for Reverse Logistics

R Siring, H Herdiyansyah, R D Kusumastuti and A E Lucianto B-26

Optimisation of Subtractive Rapid Prototyping Process Parameters Using Response Surface Methodology

T J Suteja and M A Hadiyat B-32

A Kinetic Study of Oil-in-Water Emulsion Formation Stabilized by Rice Husk Ash and Lecithin

L Sapei, S W Kurniawan and A P Siantoro

B-38

Improvement of Salt Raw Material Procurement and Inventory Planning at Bitung

I Hapsari, D N Prayogo, C M G Liembath

B-44

Price and Inventory Policy Strategy Model in a Price Sensitive Dual Channel Supply Chain Structure Considering Product Substitution

R Y H Silitonga and N Christina

B-50

Tofu Wastewater Treatment Through a Combined Process of Coagulation-Flocculation and Ultrafiltration

P Prawati, A Oktariany, S S Putri, I Aditya and S Kartohardjono

B-56

Risk-Based Sustainability Balanced Scorecard to Prioritize Integrated Improvement and to Consider High Level Structure

R D Wahyudi, Y Sari, E Wibisono, F Rafael and A F Tanujaya

B-63

Effect of NR-g-cellulose Coupling Agent into NR-Cellulose Composite Dispersibility and Its Physical Properties

H Handayani, A Cifriadi, A S Handayani, M Chalid, S Savetlana, M Christwardana

B-69

Carbon Emission Modelling in Container Terminal Operations Planning Using a System Dynamics Approach

D N Prayogo

B-75

The Effect of Soygurt Fortification with Black Rice Bran Extract Anthocyanin in Hyperlipidemia Wistar Rats (*Rattus norvegicus*)

E P Nurlaili, S Hartati and Nurhidajah

B-81

Container Storage Tariff Policy Analysis Using Combining Game Theory and System Dynamics Approach

A G Budianto and B Wirjodirdjo

B-87

Formulation and Characterization of Chitosan-Alginate Freeze Dried Matrices Loaded with Oleoresin Extract of Red Ginger

E A Krisanti, A Safiya and K Mulia

B-93

Preparation and Characterization of Polyvinyl Alcohol-Chitosan-Tripolyphosphate Hydrogel for Extended Release of Anti-Tuberculosis Drugs

K Mulia, S A Chadarwati, A J Rahyussalim and E A Krisanti

B-101

Effects of Initial Concentration, Adsorbent Mass, pH and Temperature to Personal Care Products Waste Removal with Activated Carbon as Adsorbent

H R Priyantini, L Riadi, C Effendi, F Effendi and A Mitayani

B-111

Surface Roughness Analysis Using Sound Signal in Turning of Mild Steel

Anayet U Patwari, Anas Azmayeen Zamee, Mehedi Hasan Bhuiyan and Sultan Mahmud Sakib

B-117

Environmental Life Cycle Costing of Boiler System: a Case Study

C A Sulistio, Laurence, N Hartono and J Hanafi

B-123

The Integration of Social Responsibility into Business Operation: Case Study of Indonesian Manufacturing Industry

E D Rinawiyanti, C Huang and S As-Saber

B-128

Solubility Correlation of Azobenzene Derivatives in Supercritical Carbon Dioxide: a Short Review

Ratna Surya Alwi and Andi Sry Iryani

B-134

Xylanase Production from Combined *Reutealis trisperma* with Potato Dextrose Broth by *Tricodherma reesei*: Effect of Pretreatment

Y E Agustin, L Riadi and T P Utami

B-140

Power System and Green Energy Management

Analysis of the Potential of Solar Panel Implementation Towards Green Affordable Housing Development

A E Lucianto and H Herdiansyah

C-1

Integration of Biogas Technology into Goat Farming to Achieve Zero Waste System: Effect of Substrate Composition and Concentration

K Cahyari

C-7

Single-Phase DC-AC Inverter with Low Power Dissipation with Transformer and Filter for Photovoltaic-Based Home-Scale Electric Power System

I Hidayat, F Samman and R Sadjad

C-11

The Influence of Water and Catalyst Leach Process toward Propane Oxidation on MoVTenNb Catalyst

R K Widi

C-21

Gas Sensitive Properties Of ZnO Nanorods Formed on Silicon and Glass Substrates

V Petrov, A Starnikova, Y Varzarev, K Abdullin and D Makarenko

C-27

The Study of The Properties of Lead Zirconate-Titanate Films on Silicon Substrate After Halogen Lamps Rapid Thermal Annealing

V Petrov, A Kamentsev, V Polyakov and Y Varzarev

C-33

Temperature Dependence of Electrical Properties of ZnO Nanorods Array

V Petrov, Y Varzarev and K Abdullin

C-37

Utilization of Rice Straw and Used Paper for the Recycle Papermaking <i>N Suseno, T Adiarto, M S P Tentoea and V E Sugihartono</i>	C-41
Mass Transfer Kinetic Model and Removal Capacity of Acid Blue 29 Adsorption onto Activated Carbon <i>P Setyoprato, H R Priyantini and R Agustriyanto</i>	C-47
Effects of Electroculture on Shoot Proliferation of Garlic (<i>Allium sativum</i> L.) <i>VL Manguiam, A M Margate, R D Hilahan, H G Lucin, K R Pamintuan, A Adornado</i>	C-53
The Use of Pyrolusite to Remove Pb and Cd in Aqueous Solutions : Isotherm and Thermodynamic <i>Y F Liem, M W B Kembie and N M Tanusaputra</i>	C-57
Current Perspectives and Mini Review on Zeolitic Imidazolate Framework-8 (ZIF-8) Membranes on Organic Substrates <i>P D Sutrisna, N F Himma, N Prasetya and I G Wenten</i>	C-63
Power generation in a Plant-Microbial Fuel Cell Assembly with Graphite and Stainless Steel Electrodes Growing <i>Vigna Radiata</i> <i>K R Pamintuan and K Sanchez</i>	C-69
Drying of Celery Leaves (<i>Apium graveolens</i> L.) using a PV/T Solar Dryer <i>L Sapei, E Tarigan, D N Sugiarto and D Gianluca</i>	C-75
Kinetics Oxidative Degradation of Chitosan in Formic Acid with The Presence of Hydrogen Peroxide <i>E Purwanto, J Connor and Y Ngothai</i>	C-81
<u>The Role of IT in Innovation Enhancement</u>	
Smart urban farming using arduino in residential area <i>D A Prima, W D Savitri, V R Prasetyo, E Suryadjaja</i>	D-1

Towards power supply efficiency in IoT for image-based transmission scheme <i>N Karna, M Safira</i>	D-7
E-commerce for Japanese pop-products in Indonesia: the sign of decline stage <i>Gunawan, Yu Noda</i>	D-14
Enhancement of weighted centroid algorithm for indoor mobile non-cooperative localization system <i>R D Ainul</i>	D-20
E-commerce development using object oriented analysis and design (OOAD), a case study in Marenggo Natural Dyes Batik SME in Indonesia <i>D P Sari, N U Handayani, Y Widharto, M F M Raharjo</i>	D-26
Anchored instruction ITS: a novel approach to make learning programming interesting and effective <i>B Hartanto, J Reye</i>	D-32
Requirements analysis for the disaster logistics inventory information system to improve the effectiveness and efficiency of handling emergency response periods <i>N U Handayani, D P Sari, Y Widharto, G Basyir</i>	D-39
Software verification and validation using statistical test: a systematic mapping study <i>S Arifiani¹, F Handani, S Rochimah¹, D Herumurti, I Kuswardatyan</i>	D-45
Usability of multimedia-based technology in situational judgment test: literature review and survey on millennial generation <i>F Handani, E Yuliandari, Elisabeth</i>	D-52
Employing game technology as positive influence on conveying positive message and train positive behavior: case study racism and tolerance issue <i>N M Angga, M F Suciadi, S Yuanita, M A Wiradarma</i>	D-59

FSM based virtual camera control for earthquake evacuation simulation <i>D A Prima</i>	D-64
Machine learning to predict rainfall at Deli Serdang Stasion in North Sumatra <i>I Fitriyaningsih, L R Bernando, S N Kwatri</i>	D-71
Rethinking third place in the digital era <i>R F P Hadi, E Ellisa</i>	D-78
Image based indonesian fruit recognition using MPEG-7 color structure descriptor and k-nearest neighbor <i>J Siswantoro, H Arwoko, M Wideasri</i>	D-84
The design of android-based application for museum guide information system using beacon technology <i>D Absari, D H Prasetyo, F Adinata</i>	D-90
Virtual reality app on Milky Way solar system, case study: Kebraon II Public Elementary School, Surabaya, East Java, Indonesia <i>M F Suciadi, Lisana, F Ramadhan</i>	D-96
Computer vision system in measurement of the volume and mass of egg using the disc method <i>M Wideasri, L P Santoso, J Siswantoro</i>	D-102
Fraud detection using process mining and analytical hierarchy process with verification rules on erp business process <i>M F Naufal</i>	D-108
Customer intention to use airbnb application: a case study <i>S Bellina, Laurence, N Hartono</i>	D-114

Evaluation of academic website using eye tracker and ueq: a case study in a website of xyz

A H Kusumo, M Hartono

D-119

A decision tree algorithm for predicting amount of batik tulis lasem production by decision support system to support financial feasibility

T Khotimah, R Nindyasari, N Ermawati

D-125