

Standardization of *Phyllanthus niruri* and *Sonchus arvensis* as Components of Scientific *Jamu*

Nikmatul Ikhrom Eka Jayani¹, Alfian Hendra Krisnawan¹, Nina Dewi Oktaviyanti¹, Kartini^{1,2,*}

¹ Department of Pharmaceutical Biology, Faculty of Pharmacy University of Surabaya, Indonesia

² Centre for Information and Development of Traditional Medicine, University of Surabaya, Indonesia

ABSTRACT

Saintifikasi Jamu, or the scientific investigation of *Jamu*, is an evidence-based process to ensure the safety and efficacy of herbal medicine through health service research. *Jamu* has been empirically explored as a composition of various crude drugs, hence called as Scientific *Jamu*. *Phyllanthus niruri* and *Sonchus arvensis* are two of the 30 medicinal plants processed into Scientific *Jamu*. Components of the Scientific *Jamu* are standardized to ensure that these materials meet the predefined quality. This study was aimed to determine the specific parameters (macroscopic, microscopic, total flavonoid content, water-soluble extract content, and ethanol-soluble extract content) and non-specific parameters (loss on drying, total ash content, and acid insoluble ash content) of *Phyllanthus niruri* and *Sonchus arvensis* collected from Batu, Tawangmangu, and Bogor. The methods of the determination referred to the Indonesian Herbal Pharmacopoeia 1st Edition (2008). The results showed that *Phyllanthus niruri* and *Sonchus arvensis* from the three places did not meet the standard requirement.

Keywords: Standardization; *Phyllanthus niruri*; *Sonchus arvensis*; Scientific *Jamu*

INTRODUCTION

Jamu is Indonesian indigenous herbal medicine that has been used empirically to prevent and treat various diseases. The Indonesian government has been developing *Jamu* into Standardized Herbal Medicine and Phytopharmaca to provide evidence of its safety and efficacy scientifically. This effort includes a strategy called "*Saintifikasi Jamu*" (i.e., scientific investigation of indigenous herbal medicine) to create the Scientific *Jamu* by analyzing the long-standing use of *jamu* through health service-based research. The naming and procedures of *Saintifikasi Jamu* are specified in the Regulation of the Minister of Health No. 003/I/MENKES/2010 (Purwadianto *et al.*, 2017). There have been seven formulas of Scientific *Jamu* made of a mixture of various preselected crude drugs that can be found in conventional *jamu*. The examples include *Phyllanthus niruri* (Indonesian: *meniran*) and *Sonchus arvensis* (Indonesian: *tempuyung*) (Figure 1) (Triyono *et al.*, 2016), which are two of the focal 30 medicinal plants in the research and development program of traditional medicines from raw materials supported by the Indonesian Ministry of Health (MENKES RI, 2013).

The *Saintifikasi Jamu* program is designed to increase the availability, safety, efficacy of herbal medicine. Also, it intends to promote using herbal medicine in both self-medication and treatments in primary health care facilities (MENKES RI, 2010).

*Corresponding author : Kartini
Email : kartini@staff.ubaya.ac.id



Figure 1. *Phyllanthus niruri* (a) and *Sonchus arvensis* (b)

The quality of crude drug materials is a prerequisite for ensuring the safety and efficacy of herbal medicines. However, physicians expecting to participate in this program are still faced with a significant problem; that is, the availability of qualified and standardized crude drugs. B2P2TOOT Tawangmangu has been the only major supplier of Scientific *Jamu*. Therefore, various efforts to support the sustainable availability of qualified crude drugs from different regions in Indonesia are welcome, including the cultivation and standardization process.

Standardization of herbal drugs is a process to confirm the identity, quality, and purity of herbal materials (Jayani *et al.*, 2020). It serves to ensure the quality of herbs used as raw materials in herbal medicinal products by comparing it with the

standard quality of crude drugs issued in the Indonesian Herbal Pharmacopoeia 1st edition (DEPKES RI, 2008). In this context, the quality of the crude drugs depends on many factors, such as environment, soil, climate, seed quality, harvest, and preparation of crude drug that includes drying method and storage condition (DEPKES RI, 2008; WHO, 2011). In this study, we standardized two of six plant materials used in Scientific *Jamu* as anti-hyperuricemic medicine, namely, *Phyllanthus niruri* and *Sonchus arvensis* collected from three different geographical locations in Indonesia. Both plants were standardized to ensure that the resulting crude drugs met all of the quality parameters listed in the Indonesian Herbal Pharmacopoeia 1st edition (DEPKES RI, 2008).

METHODOLOGY

Materials and equipment

Phyllanthus niruri and *Sonchus arvensis* samples were collected from three institutions in Indonesia in March of 2018. (1) UPT Materia Medica Batu (the Province of Jawa Timur) is located at an altitude of ± 875 m above the sea level with a temperature of ± 20 - 25°C . (2) Biopharmaca Cultivation Conservation Unit, Studies Center for Tropical Biopharmaca IPB Bogor (the Province of Jawa Barat) is situated at ± 145 - 400 m above the sea level with a temperature of ± 25 - 33°C . (3) B2P2TOOT Tawangmangu in Karanganyar (the Province of Jawa Tengah) is located at ± 1200 m above the sea level with a temperature of ± 22 - 31°C . These institutions were also responsible for determining the crude drugs of both plants. The chemicals used in the study were chloral hydrate (Merck), HCl (Merck), chloroform (Mallinckrodt), ethanol 96% (Merck), H_2SO_4 (Merck), NaNO_2 (Merck), AlCl_3 (Merck), NaOH (Merck), $\text{CH}_3\text{CO}_2\text{K}$ (Merck), quercetin (Sigma), and demineralized water.

Meanwhile, the research equipment included analytical balance (Ohaus), oven (Memmert), moisture content balance (Mettler Toledo), desiccator (Duran), binocular microscopes (Olympus), furnace (Memmert), ultrasonic cleaner (Branson), spectrophotometer (Shimadzu), and laboratory glassware.

Preparation of powdered crude drugs

The sampled crude drugs of *Phyllanthus niruri* and *Sonchus arvensis* were ground to powders using a blender and then sifted with a 40-mesh sieve.

Macroscopic and microscopic tests

The macroscopic test was carried out to observe the organoleptic properties directly from

the shape, color, smell, and taste. Meanwhile, in the microscopic test, the powdered crude drugs were placed on an object-glass, added with chloral hydrate, covered with a cover glass, and heated quickly with low heat at a distance of ± 8 cm to spiritus flame. Afterward, the fragments of *phyllanthus niruri* and *Sonchus arvensis* were observed under a microscope with 10x40 magnification (WHO, 1998; DEPKES RI, 2008).

Determination of total flavonoids

The total flavonoid content was determined by the spectrophotometric method described in Amessis-Ouchemoukh *et al.* (2014). The crude drugs were first extracted with 96% ethanol. One ml of the sample solution was put in a 10 ml volumetric flask, then added with 4 ml of demineralized water and 0.3 ml of 5% NaNO_2 , left for 5 minutes, and added with 0.3 ml of 10% AlCl_3 . At the 6th minute, 2 ml of 1 M NaOH was added, followed by demineralized water up to exactly 10.0 ml. The absorbance of each sample solution was read using a spectrophotometer at 400.2 nm. The concentrations of the total flavonoids were calculated and expressed as g quercetin equivalent (QE)/g dry weight (DW).

Determination of water- and ethanol-soluble extract

Five gram of crude drug powder was placed in a clogged Erlenmeyer and macerated with 100 ml of water (saturated with CHCl_3) or ethanol for 6 hours, shaken frequently, and allowed to stand for 18 hours. Afterward, the extract produced was quickly filtered and poured into a 100.0 ml volumetric flask. Twenty ml of this extract was transferred to a porcelain cup and then evaporated until dry, and then the residue was heated using an oven at 105°C to constant weight. The soluble extract was calculated in g per g of air-dried material (DEPKES RI, 2008).

Determination of loss on drying (LOD)

About 1-2 g of the crude drug powder was placed in crucible porcelain and dried at 105°C for 60 minutes. Then, the crucible porcelain was moved into a desiccator (until room temperature). This process was repeated until the constant weight was achieved. LOD was expressed as g per g of air-dried material (DEPKES RI, 2008).

Determination of total ash

About 2-4 g of the crude drug powder was placed in crucible porcelain and ignited by gradually increasing the heat temperature to 500 - 600°C until ashes were formed. Then, the ashed powder was allowed to cool in a desiccator.

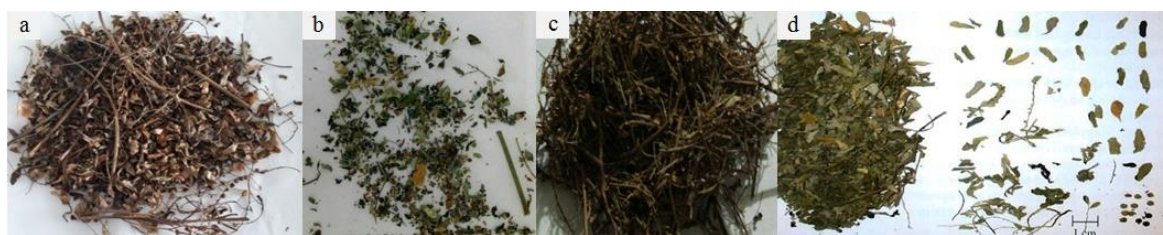


Figure 2. The macroscopic profiles of *Phyllanthus niruri* from Batu (a), Tawangmangu (b), and Bogor (c) and the standard macroscopic appearance (d)



Figure 3. The macroscopic profiles of *Sonchus arvensis* from Batu (a), Tawangmangu (b), and Bogor (c), and the standard macroscopic appearance (d)

In the event of failed ash formation, the residue was moistened with ± 2 ml of water or a saturated solution of ammonium nitrate R and then dried on a water-bath and, subsequently, a hot-plate to constant weight. The crucible porcelain was moved into a desiccator for 30 minutes. This process was repeated until a constant weight was achieved. The total ash content was calculated in g per g of air-dried material (DEPKES RI, 2008).

Determination of acid-insoluble ash

The product of the previous procedure (i.e., determination of the total ash content) was added with 25 ml of hydrochloric acid ($\sim 70\text{g/l}$) TS, covered with a cover-glass, and boiled gently for 5 minutes. The cover-glass was rinsed with 5 ml of hot water, and this remnant was added to the crucible. The insoluble matter was collected on an ashless filter paper and washed with hot water until the filtrate was neutral. Afterward, filter paper containing the insoluble matter was transferred to the first crucible and dried on a hot-plate to constant weight. Then, the acid-insoluble ashed powder was allowed to cool in a desiccator for 30 minutes. The content of the acid-insoluble ash was calculated in g per g of air-dried material (DEPKES RI, 2008).

Data analysis

The evaluation results of all parameters were compared to the quality standards of crude

drugs, as listed in the Indonesian Herbal Pharmacopoeia 1st edition (DEPKES RI, 2008).

RESULT AND DISCUSSION

The macroscopic properties of the crude drugs

Macroscopic characterization is the first step to establish the identity, purity, and quality of a crude drug. In this study, visual inspection, recommended as the most straightforward and quickest means, was followed by further tests to justify whether or not *Phyllanthus niruri* and *Sonchus arvensis* satisfied the requirements set in the Indonesian Herbal Pharmacopoeia 1st edition (DEPKES RI, 2008). In general, *Phyllanthus niruri* macroscopically appears as an herb with a round stem and small oval-shaped leaf with a size of 2.5-5 mm. The crude drug is brownish-green and has a specific odor and bitter taste. The macroscopic details of the *Phyllanthus niruri* samples from Batu, Tawangmangu, and Bogor are presented in Figure 2.

Meanwhile, *Sonchus arvensis* leaves are brownish-green, odorless, and generally folded or rolled up and has a slightly bitter taste. They are oval-shaped or lanceolate with irregular notched, acute base, irregular margin, and rougher and paler on the upper side. The macroscopic details of the *S. arvensis* leaves collected from Batu, Tawangmangu, and Bogor are presented in Figure 3. As seen in Figures 2 and 3, the leaf samples of *Phyllanthus niruri* and *Sonchus arvensis* are

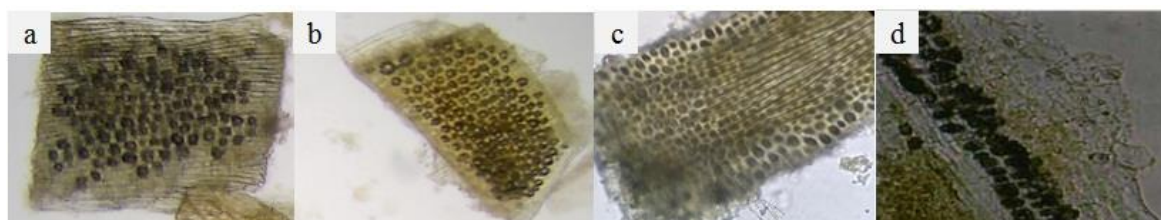


Figure 4. Upper epidermal fragments with rosette-shaped calcium oxalate crystals, 400x magnification: *Phyllanthus niruri* from Batu (a), Tawangmangu (b), Bogor (c), and the standard (d)

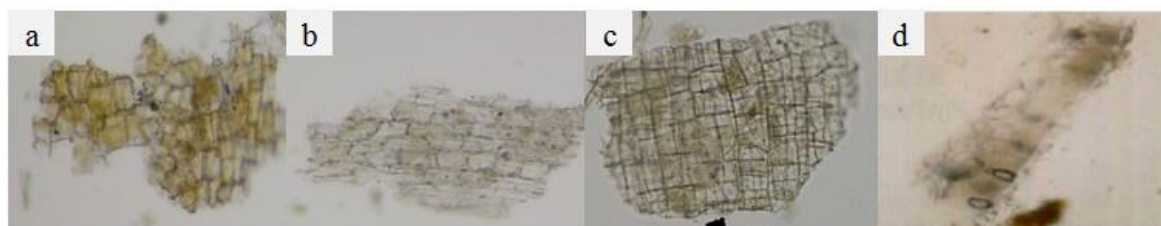


Figure 5. Upper epidermal fragments with prismatic calcium oxalate crystals in the palisade, 400x magnification: *Phyllanthus niruri* from Batu (a), Tawangmangu (b), Bogor (c), and the standard (d)

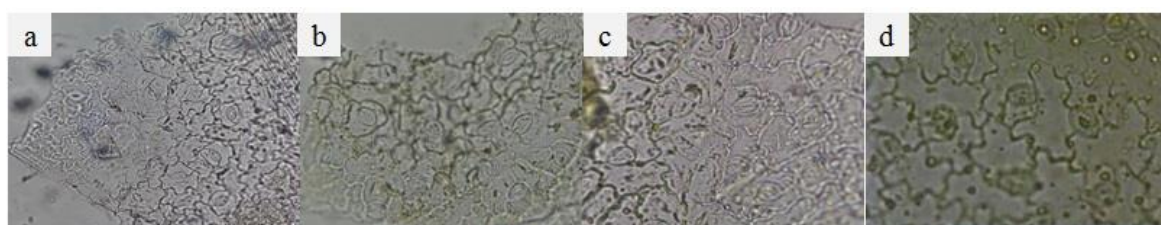


Figure 6. Fragments of the lower epidermis with stomata, 400x magnification: *Phyllanthus niruri* from Batu (a), Tawangmangu (b), Bogor (c), and the standard (d)

macroscopically consistent with the standards set in the Indonesian Herbal Pharmacopoeia 1st edition (DEPKES RI, 2008).

The microscopic properties of the crude drugs

Microscopic profiles are useful in determining powdered materials and their plant sources. Although microscopic examination alone cannot always provide complete identification, it often produces valuable supporting evidence when used in conjunction with other analytical methods. The results showed that microscopically the sampled *Phyllanthus niruri* had adaxial epidermis with rosette-shaped calcium oxalate crystals and palisade tissue (in the adaxial epidermis) with prismatic calcium oxalate crystals, abaxial epidermis with stomata, pericarpium, and tangential bodies (Figures 4-8).

The *Sonchus arvensis* leaf samples were microscopically identified from their glandular trichomes, abaxial epidermis, anisocytic stomata, transport systems, and adaxial epidermis (Figures 9-12).

As seen in Figures 4-12, the microscopic features of the *Phyllanthus niruri* and *Sonchus arvensis* samples collected from the three regions meet the requirements of the Indonesian Herbal Pharmacopoeia 1st edition (DEPKES RI, 2008). These results confirm that the identities of the sampled crude drugs are correct, i.e., that they come from *Phyllanthus niruri* and *Sonchus arvensis*, not from other plants.

Total flavonoids content

Phyllanthus niruri contain various active phytochemicals, such as flavonoids, alkaloids, terpenoids, lignans, polyphenols, tannins, coumarins, and saponins. Rutin, quercetin, quercitrin, astragaline, and catechin are the main flavonoids found in this plant (Bagalkotkar *et al.*, 2006). Moreover, different types of phytoconstituents have also been detected in *Sonchus arvensis*, including steroids, phenols, and flavonoids. Myricetin, quercetin, kaempferol, and apigenin are some of the flavonoids found in this medicinal plant (Xia *et al.*, 2010; Seal *et al.*, 2016).

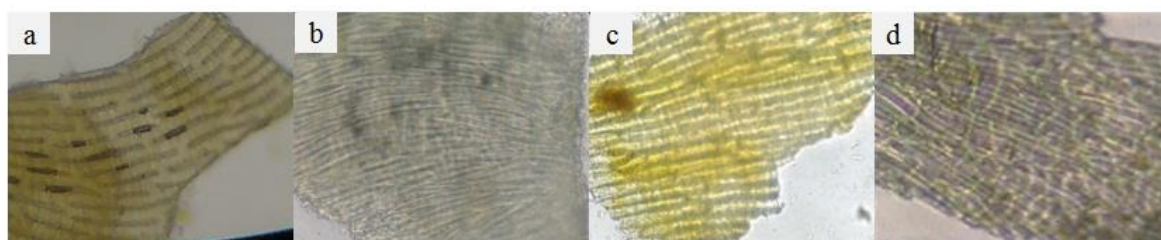


Figure 7. Pericarpium fragments, 400x magnification: *Phyllanthus niruri* from Batu (a), Tawangmangu (b), Bogor (c), and the standard (d)

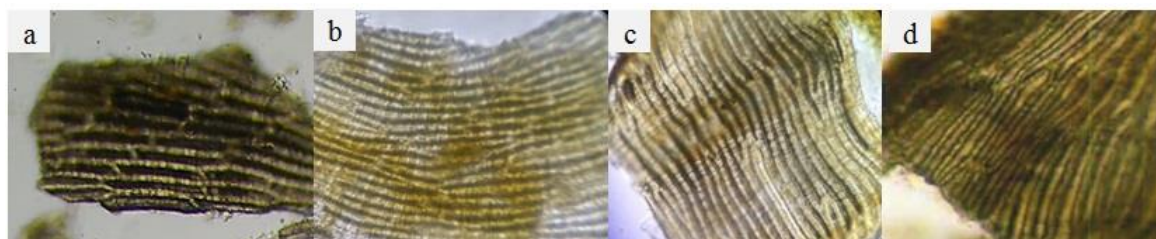


Figure 8. The tangential appearances of spermoderm fragments, 400x magnification: *Phyllanthus niruri* from Batu (a), Tawangmangu (b), Bogor (c), and the standard (d)

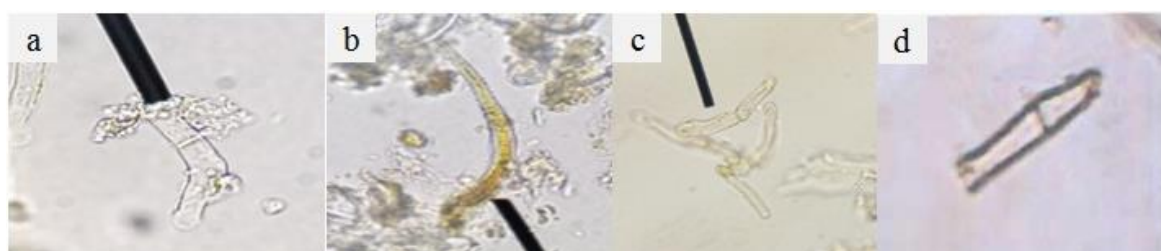


Figure 9. Glandular hair fragments, 400x magnification: *Sonchus arvensis* from Batu (a), Tawangmangu (b), Bogor (c), and the standard (d)

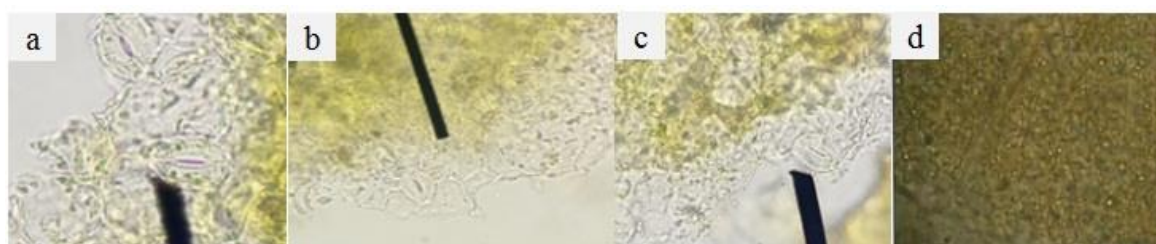


Figure 10. Lower epidermal fragments with anisocytic stomata, 400x magnification: *Sonchus arvensis* from Batu (a), Tawangmangu (b), Bogor (c), and standard (d)

Many studies (e.g., Tapas *et al.*, 2008; Kumar *et al.*, 2013) suggest that flavonoids possess antioxidative, free radical scavenging, hepatoprotective, anti-inflammatory, and anticancer activities and are well-known for its function in coronary heart disease preventions. Meanwhile, some flavonoids exhibit potential antiviral, antiallergic, antithrombotic, antispasmodic, and immunomodulatory capacities. Therefore, pharmacopeias, including Indonesian

Herbal Pharmacopoeia 1st edition (DEPKES RI, 2008), typically use this class of compound as one of the chemical markers or parameters in standardization. Table I shows the total flavonoid content of *Phyllanthus niruri* and *Sonchus arvensis*, as determined by UV-Vis spectrophotometry.

Based on Table I, the total flavonoid contents of *Phyllanthus niruri* sampled from the three regions did not meet the requirements of the Indonesian Herbal Pharmacopoeia 1st edition

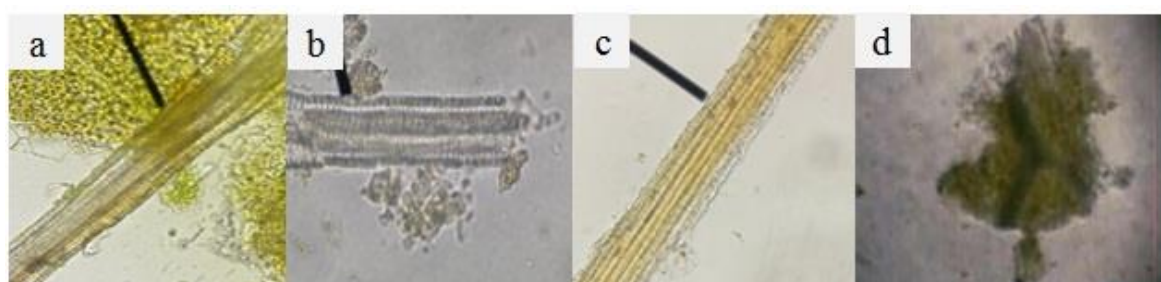


Figure 11. Fragments of the transport system, 400x magnification: *Sonchus arvensis* from Batu (a), Tawangmangu (b), Bogor (c), and the standard (d)

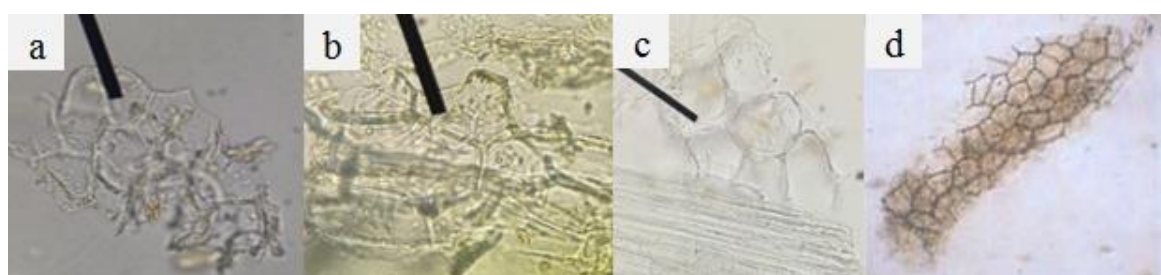


Figure 12. Upper epidermal fragments, 400x magnification: *Sonchus arvensis* from Batu (a), Tawangmangu (b), Bogor (c), and the standard (d)

Table I. The total flavonoid content of *Phyllanthus niruri* and *Sonchus arvensis*

Origin of samples	Total flavonoids (%QE)		The standard total flavonoids (%)	
	<i>Phyllanthus niruri</i>	<i>Sonchus arvensis</i>	<i>Phyllanthus niruri</i>	<i>Sonchus arvensis</i>
Batu	0.42 ± 0.02	0.49 ± 0.02	0.9*	0.06**
Tawangmangu	0.36 ± 0.04	0.39 ± 0.01		
Bogor	0.36 ± 0.04	0.39 ± 0.01		

Notes: Five replications for each parameter measured; *expressed as %Quercetin Equivalent; **expressed as %Luteolin Equivalent

(DEPKES RI, 2008). On the contrary, the *Sonchus arvensis* samples from the tree regions contained total flavonoids upwards of, or consistent with, the minimum requirement of the Indonesian Herbal Pharmacopoeia 1st edition (DEPKES RI, 2008).

Water- and ethanol-soluble extracts, loss on drying, total ash content, and acid-insoluble ash content

In addition to macroscopic-microscopic profiles and total flavonoid content, water- and ethanol-soluble extracts were also examined as specific parameters (Tables II and III). Total extract content correlates with the concentration of chemical compounds dissolved in certain solvents. This parameter provides initial information on the total amounts of the chemical compounds in an herbal material (DEPKES RI, 2000).

The results showed that the water- and ethanol-soluble extracts of the *Phyllanthus niruri*

leaves from the three origins were 12.19-17.54 % and 8.79-13.55%, respectively. Meanwhile, the water- and ethanol-soluble extracts of *Sonchus arvensis* collected from the three origins were 12.91-14.56% and 8.05-11.47%, respectively. These figures mean that in both crude drugs, the concentrations of water-soluble extracts are higher than their ethanol counterparts. From this finding, the *Phyllanthus niruri* and *Sonchus arvensis* crude drugs were predicted to contain high levels of polar compounds. Unfortunately, some of their water- and ethanol-soluble extracts did not meet the requirements of the Indonesian Herbal Pharmacopoeia 1st edition (DEPKES RI, 2008), which is attributable to, for instance, the age of the plant, harvest time, climate, and geographical location.

Loss on drying (LOD) refers to the residual substances produced in drying at 105°C for 30 minutes or until a constant weight is achieved.

Table II. The water- and ethanol-soluble extracts, loss on drying, total ash, and acid-insoluble ash of *Phyllanthus niruri*

Parameters	Standards	Origin of samples		
		Batu	Tawangmangu	Bogor
Water-soluble extract (%)	NLT 16.0	12.19±0.03	17.54±0.44*	13.20±0.40
Ethanol-soluble extract (%)	NLT 8.0	8.79±0.93*	13.55±0.18*	8.96±0.59*
Loss on drying (%)	NMT 14	9.21±0.17*	8.65±0.57*	7.62±0.38*
Total ash (%)	NMT 7.2	7.93±0.21	8.26±0.58	7.83±0.98
Acid-insoluble ash (%)	NMT 1.2	1.08±0.20*	1.08±0.12*	0.51±0.05*

Notes: Five replications for each parameter measured; NLT: not less than; NMT: not more than
*meet the quality standards set in the Indonesian Herbal Pharmacopoeia 1st edition (DEPKES RI, 2008)

Table III. The water- and ethanol-soluble extracts, loss on drying, total ash, and acid-insoluble ash of *Sonchus arvensis*

Parameters	Standard (Farmakope Herbal Indonesia Edisi I, 2008)	Origin of sample		
		Batu	Tawangmangu	Bogor
Water-soluble extract (%)	NLT 17.1	14.56±0.63	12.91±1.15	17.65±0.93*
Ethanol-soluble extract (%)	NLT 19.4	8.05±0.31	11.47±0.74	11.10±0.16
Loss on drying (%)	NMT 10	10.36±0.24	8.22±0.12*	7.82±0.32*
Total ash (%)	NMT 15.4	17.08±0.34	18.45±0.14	17.75±0.47
Acid-insoluble ash (%)	NMT 0.2	2.58±1.23	2.38±0.52	3.03±0.45

Notes: Five replications for each parameter measured; NLT: not less than; NMT: not more than
* meet the quality standards set in the Indonesian Herbal Pharmacopoeia 1st edition (DEPKES RI, 2008)

This test aims to determine the maximum limits (in ranges) of the number of compounds lost in the drying process, for example, the loss water and other volatile compounds like essential oils (DEPKES RI, 2008; 2010). The *Phyllanthus niruri* and *Sonchus arvensis* sampled from three Indonesian regions met the standards for LOD, except for the *S. arvensis* leaf samples from Batu. In crude drugs, high moisture content facilitates the growth of microbes during storage, leading to hydrolysis and, subsequently, the decomposition of chemical compounds (Krisyanella *et al.*, 2017).

Total ash content measures the total amount of material remaining in powdered crude drugs after ignition. It includes "physiological ash" derived from the plant tissue itself and "non-physiological ash", which is the residue of the extraneous matter (e.g., sand and soil) adhering to the plant surface. As for acid-insoluble ash content, it refers to the residues obtained after boiling the total ash with dilute hydrochloric acid and igniting the remaining insoluble matters. It measures the amount of silica present in a crude drug, especially in the forms of sand and siliceous earth.

Table II shows that the total ash content of *Phyllanthus niruri* from the three areas of origin did not fulfill the requirement, but the opposite was

true for the acid-insoluble ash content. These results indicate that the high total ash content of the *Phyllanthus niruri* is composed of physiological ash. As seen in Table III, both total and acid-insoluble ash contents of *Sonchus arvensis* did not satisfy the standard. In other terms, the physiological and non-physiological ash contents of this crude drug are categorically high. The high content of non-physiological ash is potentially caused by imperfect washing processes.

CONCLUSION

The medicinal properties of the *Phyllanthus niruri* and *Sonchus arvensis* samples collected from Batu, Tawangmangu, and Bogor do not meet the requirements set in the Indonesian Herbal Pharmacopoeia 1st edition (DEPKES RI, 2008). Before use, any results representing information on the origin of the plant materials and the crude drugs must be scrutinized further for their specific and non-specific parameters to ensure their quality as Scientific *Jamu*.

REFERENCES

Amessis-Ouchemoukh, N., Madani, K., Falé, PLV., Serralheiro, ML., Araújo, MEM., 2014, Antioxidant capacity and phenolic contents

- of some Mediterranean medicinal plants and their potential role in the inhibition of cyclooxygenase-1 and acetylcholinesterase activities, *Industrial Crops and Products*. 53(0):6-15.
- Bagalkotkar, G., Sagineedu, S., Saad, M., Stanslas, J., 2006, Phytochemicals from *Phyllanthus niruri* Linn. and their pharmacological properties: a review, *Journal of Pharmacy and Pharmacology*. 58(12):1559-70.
- DEPKES RI, 2008, *Farmakope Herbal Indonesia Edisi I*. Departemen Kesehatan Republik Indonesia, Jakarta
- DEPKES RI, 2000, *Parameter standar umum ekstrak tumbuhan obat*. Departemen Kesehatan Republik Indonesia, Jakarta
- <http://materiamedicabatu.jatimprov.go.id/> (accessed on April 1, 2020)
- <http://www.b2p2toot.litbang.kemkes.go.id/> (accessed on April 1, 2020)
- <https://ipb.ac.id/page/research/biopharmaca/> (accessed on April 1, 2020)
- Jayani, NIE., Kartini., Putri, LK., 2020, Standardization of a Crude Drug *Moringa oleifera* Leaf from Africa, India and Local (Indonesian) which Cultivated in Bojonegoro Indonesia, *International Journal of Pharmaceutical Research*. 12 (2).
- Krisyanella, K., Susilawati, N., Rivai, H., 2017, Pembuatan Dan Karakterisasi Serta Penentuan Kadar Flavonoid Dari Ekstrak Kering Herba Meniran (*Phyllanthus niruri* L.), *Jurnal Farmasi Higea*. 5(1):9-19.
- Kumar, S., Pandey, AK., 2013, Chemistry and biological activities of flavonoids: an overview, *The Scientific World Journal*, 2013: 1-15
- MENKES RI, 2010, *Peraturan Menteri Kesehatan Republik Indonesia Nomor 003. MENKES/PER/2010 tentang saintifikasi jamu dalam penelitian berbasis pelayanan kesehatan*. Menteri Kesehatan Republik Indonesia, Jakarta
- MENKES RI, 2013, *Peraturan Menteri Kesehatan Republik Indonesia Nomor 82 Tahun 2013*. Menteri Kesehatan Republik Indonesia, Jakarta
- Purwadianto, A., Poerwaningsih, E., Widiyastuti, Y., Neilwan, A., Sukasediati, N., 2017, *Pedoman Penelitian Jamu Berbasis Pelayanan Kesehatan*. Lembaga Penerbit Badan Penelitian dan Pengembangan Kesehatan, Jakarta.
- Seal, T., 2016, Quantitative HPLC analysis of phenolic acids, flavonoids and ascorbic acid in four different solvent extracts of two wild edible leaves, *Sonchus arvensis* and *Oenanthe linearis* of North-Eastern region in India, *Journal of Applied Pharmaceutical Science*, 6(2):157-66.
- Tapas, AR., Sakarkar, D., Kakde, R., 2008, Flavonoids as nutraceuticals: a review, *Tropical Journal of Pharmaceutical Research*, 7(3):1089-99.
- Triyono, A., 2016, *Tujuh Ramuan Jamu Saintifik - Pemanfaatan Mandiri Oleh Masyarakat*, Lembaga Penerbit Badan Penelitian dan Pengembangan Kesehatan, Jakarta.
- World Health Organization, 2011, *Quality Control Methods for Herbal Materials*. WHO Press, Geneva
- Xia, Z., Liang, J., 2010, Steroids and phenols from *Sonchus arvensis*. *Chinese Journal of Natural Medicines*. 8(4):267-9.

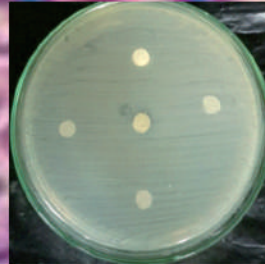
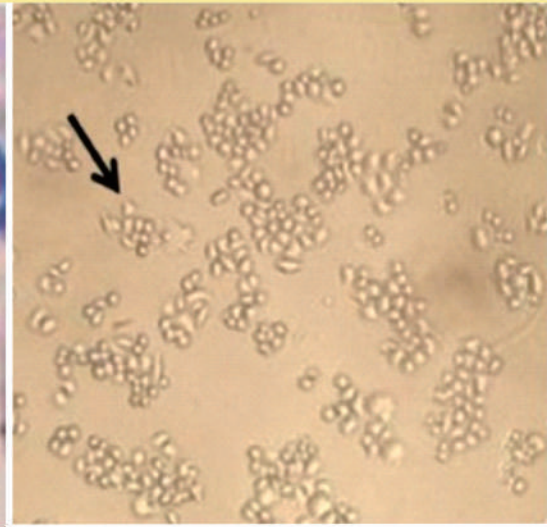
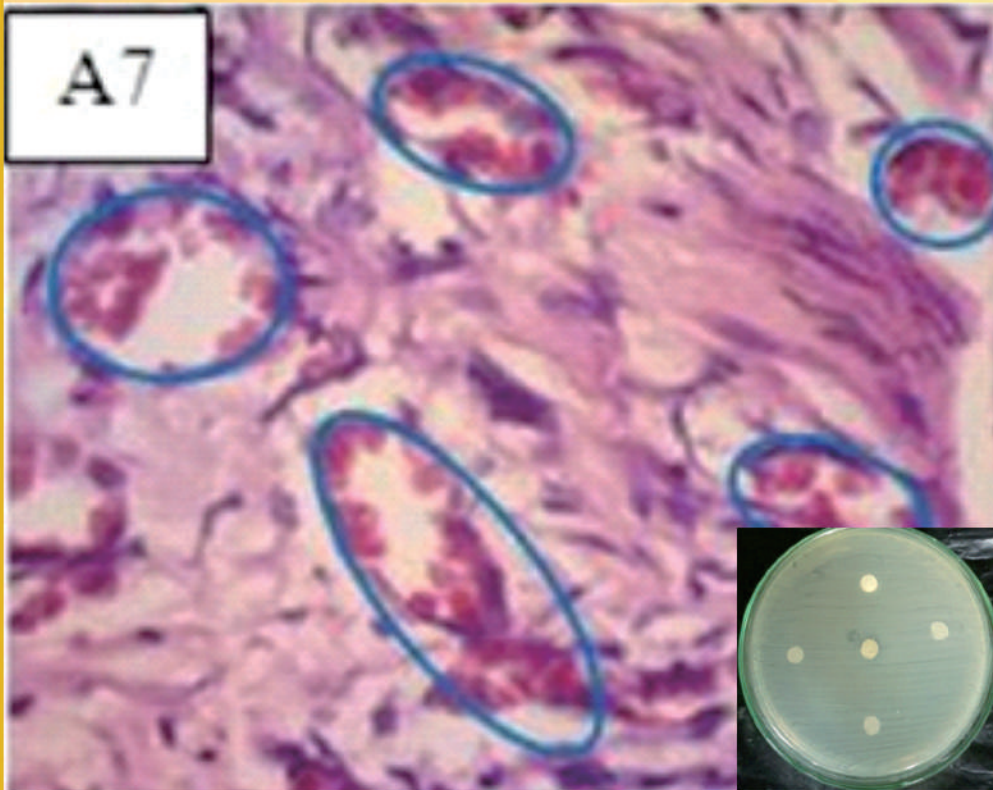


ISSN: 1410-5918

Majalah Obat Tradisional

Vol. 25 No. 1 January-April 2020

Traditional Medicine Journal



Accredited by Directorate General of Research and Development Strengthening No. 1/E/KPT/2015



Published by : Faculty of Pharmacy Universitas Gadjah Mada
Collaboration with Indonesian Pharmacist Association - DIY



PENGURUS DAERAH
D.I. YOGYAKARTA

Editorial Team

Editor in Chief

[Subagus Wahyuono](#), Faculty of Pharmacy, Universitas Gadjah Mada, Indonesia

Managing Editor

[Puji Astuti](#), Faculty of Pharmacy, Universitas Gadjah Mada, Indonesia

Editorial Board

[Christophe Wiant](#), School of Pharmacy, University of Nottingham Malaysia Campus, Malaysia

[Gerard Bodeker](#), Green Templeton College, Oxford, United Kingdom

[Ma. Mercedes G. Planta](#), Department of History, College of Social Sciences and Philosophy, University of the Philippines Diliman, Philippines

[Mahdi Yahyazadeh Balalami](#), Medical Plant Research Division, Research Institute of Forests and Rangelands, Tehran, Iran, Islamic Republic of

[Robert Verportee](#), Division of Pharmacognosy, Section Metabolomics, Institute of Biology, Leiden University, Netherlands

[Sukanya Dej-adisai](#), Department of Pharmacognosy and Pharmaceutical Botany, Prince of Songkla University, Thailand

[Dato' Ibrahim Jantan](#), School of Pharmacy, Faculty of Health & Medical Sciences, Taylor's University, Malaysia

[Hyunh Le Truong](#), Faculty of Traditional Medicine, University of Medicine and Pharmacy Ho Chi Minh City, Viet Nam

Associate Editor

[Fivy Kurniawati](#), Department of Pharmacology and Clinical Pharmacy, Faculty of Pharmacy, Universitas Gadjah Mada, Indonesia

[Andayana Puspitasari Gani](#), Department of Pharmaceutical Biology, Faculty of Pharmacy, Universitas Gadjah Mada, Indonesia

[Ratna Budhi Pebriana](#), Department of Pharmaceutical Chemistry, Faculty of Pharmacy, Universitas Gadjah Mada, Indonesia

[Purwanto Purwanto](#), Department of Pharmaceutical Biology, Faculty of Pharmacy, Universitas Gadjah Mada, Indonesia

Editorial Assistants

[Puma Arfah](#), Faculty of Pharmacy, Universitas Gadjah Mada, Indonesia

[Pudyastuti Kusumaningrum](#), Faculty of Pharmacy, Universitas Gadjah Mada, Indonesia



Menu

[Home](#) [About](#) [Login](#) [Register](#) [Search](#) [Current](#) [Archives](#) [Announcements](#) [Statistics](#) [Sitemap](#) [Indexing Journal](#) [Contact](#)

FOCUS & SCOPE

[Author Guidelines](#)

[Author Fees](#)

[Online Submission](#)

[Publication Ethics](#)

[Screening For Plagiarism](#)

[Editorial Board](#)

[Review Guidelines](#)

[Visitor Statistics](#)

[Certificate](#)

STATEMENT OF ORIGINALITY



TEMPLATE



REFERENCE MANAGEMENT TOOLS



USER

Username

Password

Remember me

NOTIFICATIONS

- [View](#)
- [Subscribe](#)

Vol 25, No 1 (2020)

Table of Contents

Articles

Efficacy of Combination Dutasteride and Lycopene to Reduce Bleeding in Benign Prostate Hyperplasia (BPH) Post-Transurethral Resection of the Prostate (TURP) Overview of Hypoxia inducible factor-1 alpha (HIF-1 α) Expression and Hematocrit Levels	1-6
<i>Eriawan Agung Nugroho, Siti Amarwati, Nugroho Akhbar</i>	
10.22146/mot.45933 Abstract views : 2444 views : 1892	
Standardization of Phyllanthus niruri and Sonchus arvensis as Components of Scientific Jamu	7-14
<i>Nikmatul Ikhtom Eka Jayani, Alfian Hendra Krisnawan, Nina Dewi Oktaviyanti, Kartini Kartini</i>	
10.22146/mot.45955 Abstract views : 2333 views : 4504	
Acute Toxicity of Jatropha Curcas L. Latex and Its Histopathological Effects on Dental Pulp and Periapical Tissues	15-21
<i>Fazwishni Siregar, Rini Damayanti</i>	
10.22146/mot.46303 Abstract views : 1704 views : 1870	
The Anti-Inflammatory Activity of Humic Acid from Borneo Peat Soil in Mice	22-28
<i>Rusliandi Rusliandi, Diah Wulandari Rousdy, Mukarlina Mukarlina</i>	
10.22146/mot.48003 Abstract views : 1986 views : 2206	
Cytotoxic Activities of (Graptophyllum pictum (L.) Griff) Ethanolic Extract and Its Fractions on Human Colon Cancer Cell WiDr	29-33
<i>Azizah Amin, Andayana Puspitasari Gani, Retno Murwanti</i>	
10.22146/mot.48189 Abstract views : 1942 views : 1975	
Optimization of Formula Granule of Lempuyang Gajah (Zingiber zerumbet (L) J.E.Smith) Rhizome Purified Extract as a Larvicide	34-41
<i>Tri Murini, Mae Sri Hartati Wahyuningsih, Achmad Fudholi, Tri Baskoro Tunggal Satoto</i>	
10.22146/mot.48754 Abstract views : 2118 views : 2440	
Potency of Sunkist Orange (Citrus sinensisL. Osbeck) against Kidney Histology of White Wistar Rats Induced by Gentamicin	42-48
<i>Masdalena Nasution, Chrismis Novalinda Ginting, Edy Fachrial, I Nyoman Ehrich Lister</i>	
10.22146/mot.49107 Abstract views : 1542 views : 2227	
The Activity of Purple Sweet Potato Leaves (Ipomea batatas Ver.) Extract to Calcium Oxalate Concentration of Male Rat (Rattus norvegicus)	49-54
<i>Roihatul Mutiah, Avin Ainur Fitriyaningsih, Yen Yen Ari Indrawijaya, Nabila Rahmadani</i>	
10.22146/mot.49423 Abstract views : 1768 views : 2555	
Evaluation of Antibacterial Potential of Carbonated Hydroxyapatite Combined with Propolis on Porphyromonas gingivalis	55-58
<i>Nungky Devitaningtyas, Ahmad Syaify, Dahlia Herawati, Suryono Suryono</i>	
10.22146/mot.55173 Abstract views : 2627 views : 2384	
Effect of Ozonated Olive Oil in Topical Application towards Osteoblast Number and Angiogenesis of Alveolar Bone in Periodontitis Healing Process (in vivo study in Sprague dawley Rats)	59-66
<i>Dahlia Herawati, Deassy Anggraeni, Ariska Ratih Damayanti</i>	

©Majalah Obat Tradisional (Traditional Medicine Journal)
ISSN 2406-9086
Faculty of Pharmacy
Universitas Gadjah Mada

JOURNAL CONTENT

Search

Search Scope

All

Search

Browse

- ▶ By Issue
- ▶ By Author
- ▶ By Title
- ▶ Other Journals

Visitors



83874

[View My Stats](#)

KEYWORDS

Antibacterial

Antioxidant COX-2

Carbonated hydroxyapatite

DPPH MIC Ointment

Propolis SNEDDS anti-inflammatory

antioxidant

antioxidant

activity antioxidants

collagen crospovidone

flavonoid flavonoids gel in

vitro mangosteen peels

wound healing



MAJALAH OBAT TRADISIONAL

FAKULTAS FARMASI UNIVERSITAS GADJAH MADA

P-ISSN : 14105918 <> E-ISSN : 24069086 Subject Area : Health



0

Impact Factor



984

Google Citations



Sinta 2

Current Accreditation

[Google Scholar](#) [Garuda](#) [Website](#) [Editor URL](#)

History Accreditation

2018

2019

2020

2021

2022

2023

2024

Garuda

[Google Scholar](#)

[Phytochemical Constituents, Nutritional and Antibacterial Potentials of Selected Medicinal Plants \(*Allium sativum*, *Chromolaena odorata*, and *Talinum triangulare*\)](#)

Faculty of Pharmacy, Universitas Gadjah Mada [Majalah Obat Tradisional Vol 28, No 1 \(2023\) 1-9](#)

2023 [DOI: 10.22146/mot.78700](#) [Accred : Sinta 2](#)

[Antioxidant Activity of Tempeh Ethanolic Extract on Male Swiss Mouse Brain](#)

Faculty of Pharmacy, Universitas Gadjah Mada [Majalah Obat Tradisional Vol 28, No 1 \(2023\) 10-15](#)

2023 [DOI: 10.22146/mot.79125](#) [Accred : Sinta 2](#)

[Skin Histopathology of Diabetes Mellitus Rats Treated with Edible Nest Swiftlets \(*Aerodramus fuciphagus*\) Ointment](#)

Faculty of Pharmacy, Universitas Gadjah Mada [Majalah Obat Tradisional Vol 28, No 1 \(2023\) 16-21](#)

2023 [DOI: 10.22146/mot.79392](#) [Accred : Sinta 2](#)

[Bioassay Guided Fractionation of Ciplukan \(*Physalis angulata* L.\) Monitored by Glucose Consumption Assay and Thin Layer Chromatography on Myoblast Cells](#)

Faculty of Pharmacy, Universitas Gadjah Mada [Majalah Obat Tradisional Vol 28, No 1 \(2023\) 22-30](#)

2023 [DOI: 10.22146/mot.79783](#) [Accred : Sinta 2](#)

[The Effect of Ethanolic Extract of Pandanus tectorius Leaves on Spatial Memory Ability and GCMS Analysis of Potentially Therapeutic Compounds](#)

Faculty of Pharmacy, Universitas Gadjah Mada [Majalah Obat Tradisional Vol 28, No 1 \(2023\) 31-36](#)

📅 2023 [DOI: 10.22146/mot.79828](#) [Accred : Sinta 2](#)

[Effect of Drying Method on Levels of Antioxidant Activity, Total Flavonoid Levels, and Total Phenol Levels in Ethanol Extract of Bawang Dayak \(Eleutherine americana\) Leaves](#)

Faculty of Pharmacy, Universitas Gadjah Mada [Majalah Obat Tradisional Vol 28, No 1 \(2023\) 37-39](#)

📅 2023 [DOI: 10.22146/mot.80085](#) [Accred : Sinta 2](#)

[Antibacterial activity of cream, ointment, and emulgel of Ocimum basilicum L. essential oil against Propionibacterium acnes](#)

Faculty of Pharmacy, Universitas Gadjah Mada [Majalah Obat Tradisional Vol 28, No 1 \(2023\)](#)

📅 2023 [DOI: 10.22146/mot.80909](#) [Accred : Sinta 2](#)

[Eel Oil Attenuates Acetaminophen-Induced Acute Liver Injury Through Inhibition of Oxidative Stress in Rats](#)

Faculty of Pharmacy, Universitas Gadjah Mada [Majalah Obat Tradisional Vol 28, No 1 \(2023\)](#)

📅 2023 [DOI: 10.22146/mot.81943](#) [Accred : Sinta 2](#)

[Virgin Coconut Oil \(VCO\) Attenuates Hepatotoxicity Induced by Cigarette Smoke in Rats](#)

Faculty of Pharmacy, Universitas Gadjah Mada [Majalah Obat Tradisional Vol 28, No 1 \(2023\)](#)

📅 2023 [DOI: 10.22146/mot.82659](#) [Accred : Sinta 2](#)

[Physical Stability of Binahong Leaf Extract \(Anredera cordifolia \(Ten.\) Steenis\) with Hydroxypropyl Methylcellulose and Hydroxyethyl Cellulose Gelling Agents](#)

Faculty of Pharmacy, Universitas Gadjah Mada [Majalah Obat Tradisional Vol 28, No 1 \(2023\)](#)

📅 2023 [DOI: 10.22146/mot.82983](#) [Accred : Sinta 2](#)

[View more ...](#)