



Validating and developing TLC-based fingerprinting for *Curcuma longa* L.

[Validación y desarrollo de huellas dactilares basadas en TLC para *Curcuma longa* L.]

Kartini Kartini^{1*}, Yunita A. Andriani¹, Widho Priambodo¹, Nikmatul I.E. Jayani¹, Mochammad A. Hadiyat²

¹Department of Pharmaceutical Biology, Faculty of Pharmacy, University of Surabaya, Surabaya, Indonesia.

²Department of Industrial Engineering, Faculty of Engineering, University of Surabaya, Surabaya, Indonesia.

*E-mail: kartini@staff.ubaya.ac.id

Abstract

Context: *Curcuma longa* (turmeric) is extensively cultivated as spices and herbal medicines in tropical and sub-tropical countries. Geographical origin is known to significantly determine the quality of the herbs used and, consequently, the safety and efficacy of their products.

Aims: To validate and develop TLC-fingerprint combined with chemometrics to differentiate *C. longa* collected from various origins.

Methods: Thin Layer Chromatography (TLC) was employed together with chemometric methods, i.e., Principal Component Analysis (PCA) and Cluster Analysis (CA), to evaluate the quality of *C. longa* rhizomes collected from nine origins in Indonesia.

Results: Chloroform, dichloromethane, and ethanol (64:64:1) were a suitable mobile phase for *C. longa*. The method used met the requirements for a stable and precise TLC system. As analyzed by the chemometric techniques, the TLC-fingerprints could discriminate *C. longa* from various origins. The PCA score plot of the first two principal components (PCs) and CA clearly distinguished two clusters of simples.

Conclusions: When combined with PCA and CA, TLC-fingerprinting can discern the rhizomes of *C. longa* sourced from various locations. TLC-fingerprints that are analyzed with chemometrics can be used as an alternative marker-oriented method for evaluating the quality of *C. longa*.

Keywords: cluster analysis; geographical origin; herbal medicine; principal component analysis; quality.

Resumen

Contexto: *Curcuma longa* (cúrcuma) se cultiva ampliamente como especias y hierbas medicinales en países tropicales y subtropicales. Se sabe que el origen geográfico determina significativamente la calidad de las hierbas utilizadas y, en consecuencia, la seguridad y eficacia de sus productos.

Objetivos: Validar y desarrollar TLC-huella dactilar combinada con quimiometría para diferenciar *C. longa* recolectada de diversos orígenes.

Métodos: Se empleó cromatografía de capa fina (TLC) junto con métodos quimiométricos, es decir, análisis de componentes principales (PCA) y análisis de conglomerados (CA), para evaluar la calidad de los rizomas de *C. longa* recolectados de nueve orígenes en Indonesia.

Resultados: El cloroformo, el diclorometano y el etanol (64: 64: 1) fueron una fase móvil adecuada para *C. longa*. El método utilizado cumplió con los requisitos para un sistema de TLC estable y preciso. Según lo analizado por las técnicas quimiométricas, las huellas dactilares de TLC podrían discriminar *C. longa* de varios orígenes. La gráfica de puntuación de PCA de los dos primeros componentes principales (PC) y CA distinguió claramente dos grupos de simples.

Conclusiones: Cuando se combina con PCA y CA, las huellas dactilares de TLC pueden discernir los rizomas de *C. longa* procedentes de varios lugares. Las huellas dactilares de TLC que se analizan con quimiometría se pueden utilizar como un método alternativo orientado a marcadores para evaluar la calidad de *C. longa*.

Palabras Clave: análisis de componentes principales; análisis de conglomerados; calidad; medicina herbaria; origen geográfico.

ARTICLE INFO

Received: March 22, 2021.

Received in revised form: May 6, 2021.

Accepted: May 8, 2021.

Available Online: May 20, 2021.

AUTHOR INFO

ORCID: 0000-0002-7685-9933 (KK)



INTRODUCTION

Curcuma longa L. (turmeric) is extensively cultivated and widely used as spices and for herbal medicines in many tropical and sub-tropical countries, such as India, Pakistan, Bangladesh, China, Thailand, Malaysia, and Indonesia (Niranjan and Prakash, 2008; Wichitnithad et al., 2009; Rohaeti et al., 2015). Together with other *Zingiberaceae* family members, it has a long history in Ayurvedic, traditional Indonesian (*Jamu*), and traditional Chinese medicines (TCM) (Rohaeti et al., 2015; Daily et al., 2016). Turmeric has been studied for its various biological activities, including anti-inflammatory, antioxidant, anti-tumor, anti-cancer, anti-HIV, anti-mutagenic, anti-bacterial, anti-fungal, anti-protozoal, antidiabetic, anti-fibrinogen, wound-healing, lipid-lowering, radioprotective, and immunomodulatory activities (Niranjan and Prakash, 2008; Akram et al., 2010; Amalraj et al., 2017).

C. longa is harvested for its rhizome as it contains various chemical components. Terpenoids, essential oils, and phenolic compounds are its major constituents (Rohaeti et al., 2015). The most important phenolic compounds in turmeric are curcumin (60-80%), desmethoxycurcumin (15-30%), and bisdemethoxycurcumin (2-6%), which are collectively called curcuminoids (Wichitnithad et al., 2009). These three compounds are yellow; therefore, curcuminoids and turmeric extracts are used not only as drugs but also as flavoring and coloring agents in the food industry, confectionery, and cosmetics (Niranjan and Prakash, 2008; Gupta et al., 2013).

Besides *C. longa*, there are two other yellow rhizomes from the *Zingiberaceae* family, i.e., *Curcuma xanthorrhiza* and *Zingiber cassumunar*. Due to their similar organoleptic features, the last two rhizomes can be substitutes for *C. longa*. Mistaking one species for the incorrect one can lead to a serious problem in the traditional medicine practices, such as inconsistent effects and, in worse scenarios, toxicity. Turmeric and its products can have consistent quality depending on geographical origins, solvent, and method of extraction (Sogi et al., 2010; Wakte et al., 2011; Paulucci et al., 2013). The

geographical origin of plants needs to be recognized in the production of herbal medicines because it affects the levels of bioactive compounds, a general criterion in the selection of raw materials. A simple yet accurate analytical method to identify the geographical origin of *C. longa* is thereby necessary.

Curcumin is frequently used as a marker compound by some pharmacopoeias and commercial products (Ri, 2008; Gupta et al., 2013). No less than 65 clinical trials on curcumin have been conducted, and more than 35 others are in progress to further evaluate its efficacy (Gupta et al., 2013). In addition to curcumin, at least 300 chemical constituents have been identified from *C. longa* and found to possess a variety of promising biological activities as well. Previous research proved how curcumin-free turmeric extract could suppress benzo[a]pyrene-induced tumorigenesis in mice (Deshpande et al., 1997). Several other studies also concluded that whole turmeric is more effective than curcumin alone (Deshpande et al., 1998; Nishiyama et al., 2005; Suryanarayana et al., 2005; Kim et al., 2012). These data confirm that curcumin and other compounds must be taken into account in the analysis of the quality of *C. longa*.

Therefore, the quality of *C. longa* crude drugs and products is evaluated more appropriately by measuring all or almost all of *C. longa* constituents. This approach can be performed using chemical fingerprinting. Compared to marker compounds, the application of fingerprints has several superiorities. Fingerprints are a distinctive profile or pattern of samples that chemically reflects the composition of the test plant, presenting as much information as possible (Tistaert et al., 2011; Gad et al., 2013). Therefore, fingerprinting analysis considers nearly all of the compounds in a plant, and this allows a more objective evaluation of the plant quality than using only a specific compound(s). TLC-fingerprint has been widely used in herbal medicines assessment, and it is simpler, faster, and cheaper compared to GC, HPLC, and FT-IR. TLC can process many samples in one running time, and the TLC-chromatograms can be analyzed vis-

ually. However, this technique is subjective and not quantitative. Moreover, fingerprint chromatograms are complex multivariate data sets, due to which the evaluation of very similar chromatograms is challenging unless the analysis incorporates chemometric techniques. This approach, although more difficult, is based on objective mathematical methods and treats each chromatogram as a unique signal without the need to identify and interpret the peaks. Therefore, it provides a good possibility for digging more useful chemical information from original-rich data (Komsta, 2012; Tistaert et al., 2011; Bansal et al., 2014). This research was designed to validate and develop TLC-fingerprint combined with chemometrics to differentiate turmeric collected from various origins. This simple method will be beneficial for herbal industries, especially those in developing countries.

MATERIAL AND METHODS

Chemicals

The following chemicals were procured from Merck (Darmstadt, Germany): TLC plate pre-coated with silica gel 60 F₂₅₄, n-hexane, diethyl ether, tetrahydrofuran, acetic acid, 2-propanol, dichloromethane (DCM), ethyl acetate (EA), dioxane, toluene, chloroform (CHCl₃), methanol, etha-

nol, vanillin, and sulfuric acid.

Plant materials

Curcuma longa rhizomes were collected from nine cultivation sites on Java Island, Indonesia (Table 1). The rhizome was harvested by pulling it out, then cleaned with tap water. Authentication of the rhizomes from Batu (sample G) was done by the Materia Medika Batu with accession certificate number: 074/127A/102.7/2018, whereas turmeric rhizomes from other origins were authenticated by the Center for Traditional Medicine Information and Development, University of Surabaya, Surabaya, Indonesia, with accession certificate number: 1401/D.T/V/2019. Rhizomes were then cut into slice and air-dried (Fig. 1), then ground into particles that passed through a 60-mesh screen.

Preparation of extracts

One gram of powdered *C. longa* rhizome was mixed with 10 mL of methanol and extracted with the Ultrasound-Assisted Extraction (UAE) using ultrasonic cleaner (Branson 1510, Branson Ultrasonics Corp., US), power 80 W, frequency 40 kHz, for 15 minutes. The output was then filtrated using Whatman® qualitative filter paper grade 1 (Merck, Darmstadt, Germany) to separate the extract from any residues, and this extract was finally kept in a tightly closed vial.

Table 1. Geographical provenance of *Curcuma longa* from Java Island, Indonesia.

Code	District (City)	Height (m a.s.l.)	Latitude, Longitude	Voucher code
A	Surabaya	6	7°15' S; 112°42' E	1401/D.T/V/2019
B	Sidoarjo	10	7°29' S; 112°43' E	1401/D.T/V/2019
C	Gresik	12	7°10' S; 112°40' E	1401/D.T/V/2019
D	Pacet	600	6°45' S; 107°03' E	1401/D.T/V/2019
E	Trawas	700	7°40' S; 112°36' E	1401/D.T/V/2019
F	Pasuruan	800	7°41' S; 112°39' E	1401/D.T/V/2019
G	Batu	700	7°42' S; 112°42' E	074/127A/102.7/2018
H	Tawangmangu	1200	7°42' S; 111°08' E	1401/D.T/V/2019
I	Bogor	192	6°37' S; 106°48' E	1401/D.T/V/2019
J	Commercial	NA	NA	1401/D.T/V/2019



Figure 1. Crude drugs of *C. longa* rhizomes collected from Surabaya (a), Sidoarjo (b), Gresik (c), Pacet (d), Trawas (e), Pasuruan (f), Batu (g), Tawangmangu (h), and Bogor (i).

Method validations

In this research, TLC-fingerprint was used for qualitative analysis. Therefore, validation test was focused on the selection of TLC conditions, selection of the mobile phase, followed by determination of stability and precision.

TLC conditions

The TLC system built consisted of a sample applicator (Linomat 5; Camag, Muttenz, Switzerland), twin-through chamber (Camag), and TLC-Visualizer equipped with a 12-bit CCD camera and Camag VideoScan 1.02 software with the serial number 2503D001 (Camag). Pre-coated silica gel 60 F₂₅₄ (Merck TLC plates, Art. No.: 1.05554.0001, 20 × 20 cm, 175-225 μm layer thickness, aluminum-backed, particle size distribution: 9.5-11.5 μm) was used as the stationary phase. The samples were spotted under a flow of nitrogen (8 mm bands, 10 mm from the left edge, 15 mm from the bottom edge, and 20 mm of track distance) using a 100 μL syringe (Camag). Elution was performed in a chamber that had been previously saturated (for 30 min at room temperature) with the mobile phase (see: *Selection of mobile phase*), and the migration distance was 80 mm. The TLC plates were dried at room temperature, then dipped in a vanillin-sulfuric acid reagent, dried in a fume hood, and heated for 10 min at 100°C. These plates were sub-

sequently illuminated under short-wave UV (254 nm), long-wave UV (366 nm), and white lights using TLC-Visualizer. Afterward, the digitized images were evaluated quantitatively in Camag VideoScan 1.02 program.

Selection of mobile phase

The mobile phase was selected in two steps. In the first step, the twin-through chamber was saturated (30 minutes) with each solvent (single mobile phase), i.e., n-hexane, diethyl ether, 2-propanol, ethanol, tetrahydrofuran, acetic acid, dichloromethane, ethyl acetate, dioxane, toluene, and chloroform. Two μL of *C. longa* extract was applied on the TLC plate and then developed with each mobile phase. Afterward, the plate was removed, dried at room temperature, and visualized (see *TLC conditions*). In the second step, the selection involved a mixture of two or three solvents with various ratios to obtain a chromatogram with the highest number and the best separations of zones.

Stability of chromatogram

The chemical constituents, both in the solution and on the plate, were evaluated for their stability. The extract was left at room temperature and on the plate for 3 hours. A reference extract was freshly prepared and applied just before the elution. A chemical compound was stable in solution or on the plate if the difference between its R_f value and

that of the reference extract was not larger than 0.05. Also, the stability of the chemical compounds during chromatography was evaluated by two-dimensional (2D) elution. They were deemed stable during the chromatographic process if all zones are located on a diagonal line connecting the initial position of the application and the intersection of the two mobile phase fronts. For the stability of the chromatography result, the extract was chromatographed according to the chromatography method used and derivatized with a vanillin-sulfuric acid reagent. The chromatogram was evaluated using TLC-visualizer repeatedly after 5, 10, 30, and 60 minutes. A chromatogram was stable if there were no significant changes in the Rf values (Reich and Schibli, 2007).

Precision of chromatogram

Curcuma longa rhizome was extracted in triplicates. Each extract was chromatographed in duplicates on three different plates. Intraday precision was analyzed by calculating the Rf value of the most prominent zone, its mean value, and relative standard deviation. Acceptable intraday precision occurs if the Rf values of the same compounds did not vary by more than 0.02 from one plate to another. The interday precision was determined by firstly applying the extract twice on three different plates and three different days. Interday precision was acceptable if the Rf values of the same substances did vary not by more than 0.05 between plates from Day 1 to Day 3 (Reich and Schibli, 2007).

TLC-fingerprint analysis

TLC of samples from different origins

Curcuma longa rhizome extracts from nine different locations and one commercial sample were chromatographed on a TLC plate. The TLC plate was eluted as described in *TLC condition section* and subsequently illuminated under 254 nm UV, 366 nm UV, and white lights using TLC-Visualizer 2 (Camag, Switzerland). The videodensitogram of the samples was then analyzed by the chemometric method (Komsta, 2012).

Chemometric analysis

The Rf value, height, and area of each peak (compound) obtained from the videodensitogram were tabulated and then analyzed using Principal Component Analysis (PCA) and Cluster Analysis (CA). PCA is an exploratory data analysis that is based on the information available in the fingerprints only. It reduces the complexity of the multivariate data set by explaining the correlation amongst a large number of variables using a smaller number of underlying factors (principal components or PCs) without losing much information. The projections of the n objects from the original data on PCs are called the scores plots. Meanwhile, the contribution of each original variable to the score is presented by its loading, which detects the variables responsible for the clustering (Gad et al., 2013). CA was performed to classify samples based on similarities in their chemical properties. In CA, the samples are grouped in high dimensional space and, thereby, form a dendrogram. In the first step, each sample forms a cluster, and then two nearest objects are grouped. In the next step, either a third sample joins the first two or two other samples join a different cluster. Each of these steps results in one cluster less than the previous step until, eventually, all samples are in one cluster (Yang et al., 2007). PCA and CA were conducted using Minitab v.16 (Minitab Inc., USA).

RESULTS AND DISCUSSION

Selected mobile phase

The methanol extracts of the *C. longa* rhizomes collected from nine origins and one commercial sample are presented in Fig. 2. All of the extracts exhibited dark-orange color, except for the samples from Surabaya, Sidoarjo, and Gresik (samples a, b, and c). In this context, color provides preliminary information that the quality of these extracts may differ. One of these extracts was chosen for the selection of the mobile phase. Firstly, chloroform, dichloromethane, and ethanol were the three mobile phases that yielded the highest number of zones with good separation. Secondly, these solvents were combined using simplex centroid with axial design (Brereton, 2003), from which ten com-

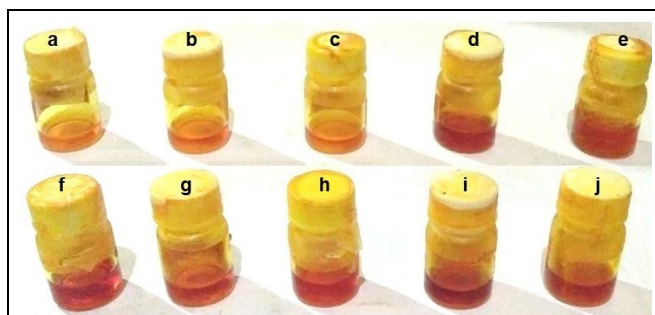


Figure 2. The methanol extracts of *Curcuma longa* rhizomes collected from Surabaya (a), Sidoarjo (b), Gresik (c), Pacet (d), Trawas (e), Pasuruan (f), Batu (g), Tawangmangu (h), Bogor (i), and commercially available product (j).

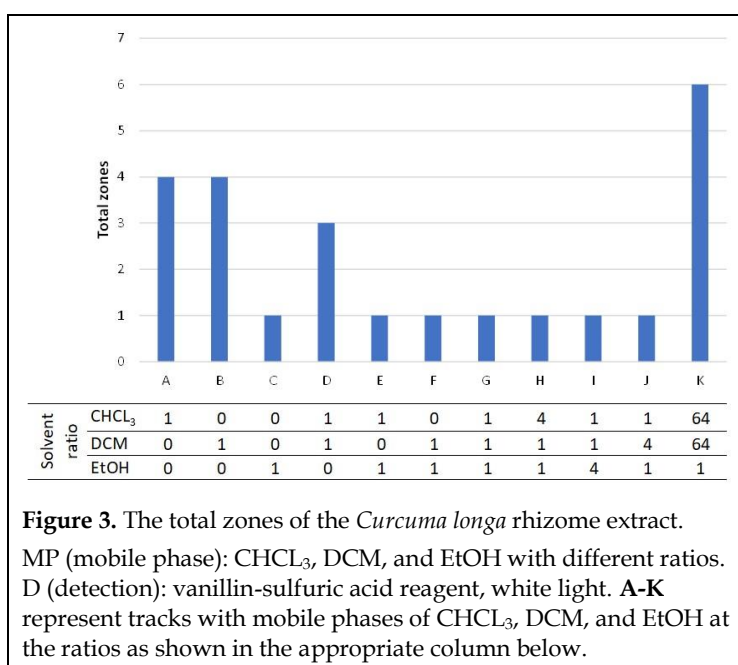


Figure 3. The total zones of the *Curcuma longa* rhizome extract. MP (mobile phase): CHCl₃, DCM, and EtOH with different ratios. D (detection): vanillin-sulfuric acid reagent, white light. A-K represent tracks with mobile phases of CHCl₃, DCM, and EtOH at the ratios as shown in the appropriate column below.

binations with various ratios were deduced (Fig. 3). However, the separation of zones with these solvent ratios was unsatisfactory; therefore, modified ratios were applied. Finally, the mixture of CHCl₃, DCM, and EtOH (64:64:1) was selected as the solvent system used in the development of TLC-fingerprinting for *C. longa*. Six zones appeared after derivatization with a vanillin-sulfuric acid reagent and visualization under white light.

Stability

Owing to the off-line nature of TLC systems, the stability of chemical contents before and during chromatography must be established. The stability of the sample before chromatography was

determined by preparing two extracts at different times. The R_f values of the prominent zone or marker (*, yellowish-green) on tracks I and II were compared to those on tracks III and IV to evaluate the stability of the sample on the plate. Meanwhile, the zones on tracks V and VI were compared to those on tracks III and IV to assess whether or not the sample in the solution was stable (Reich and Schibli, 2007). The results showed that all tracks exhibited the same pattern (Fig. 4A) and R_f value, with $\Delta R_f < 0.05$ (Table 2), indicating that the samples, both on the plates and in the extract solutions, remain stable for three hours before the chromatography.

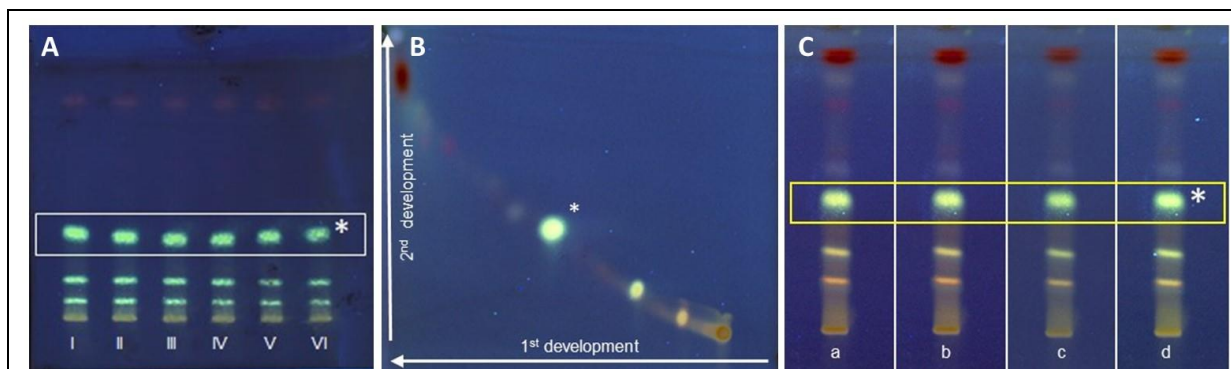


Figure 4. (A) The varying levels of stability of *C. longa* extracts on the plate and in solution. I, II: extracts on the plate were stable for 3 hours; III, IV: extracts in solution and on the plate were stable for less than 5 minutes; V, VI: extracts in solution were stable for 3 hours; (B) The stability of the *C. longa* extracts during chromatography; (C) The stability of the chromatographic results after 5 (a), 10 (b), 30 (c), and 60 minutes (d). MP: CHCl₃, DCM, and EtOH (64:64:1). D: vanillin-sulfuric acid reagent, 366 nm UV light. (*) marker compound.

Table 2. The varying levels of stability of the samples on the plate and in solution.

Markers (*)	Track I	Track II	Track III	Track IV	Track V	Track VI
Color	Yellowish-green	Yellowish-green	Yellowish-green	Yellowish-green	Yellowish-green	Yellowish-green
Rf values	0.495	0.485	0.478	0.475	0.483	0.493
ΔRf^1	0.019	0.009	0	0	0.007	0.017

¹Compared to the marker compound on tracks III and IV. (*) marker compound.

Table 3. The stability of the chromatographic results.

Marker (*)	Track a	Track b	Track c	Track d
Color	Yellowish-green	Yellowish-green	Yellowish-green	Yellowish-green
Rf	0.439	0.438	0.452	0.420
ΔRf^1	0	0.001	0.013	0.019

¹Compared to the marker zone on Track a. (*) marker compound.

The two-dimensional (2D) development was carried out to determine the stability of the samples during chromatography. A stable compound will have the same Rf value in the first and second development (Reich and Schibli, 2007). Fig. 4B shows that the chemical compounds were stable during the chromatographic process, as indicated by the appearance of a diagonal line on the 2D chromatogram.

The stability of the chromatographic results was determined by observing the color of the zones for 60 minutes. Fig. 4C and Table 3 show that the number and color of the zones were stable for 60

minutes. The difference between the Rf values of the marker zones was not larger than 0.05.

Precision test results

In the intraday precision test, the extract was chromatographed in duplicates, i.e., on three different plates on the same day. Fig. 5A and Table 4 show that the intraday precision of the method was acceptable since the ΔRf values of the marker zone (*) from one plate to another was not more than 0.05 (Reich and Schibli, 2007).

The interday precision test was carried out similarly to that of the intraday precision test.

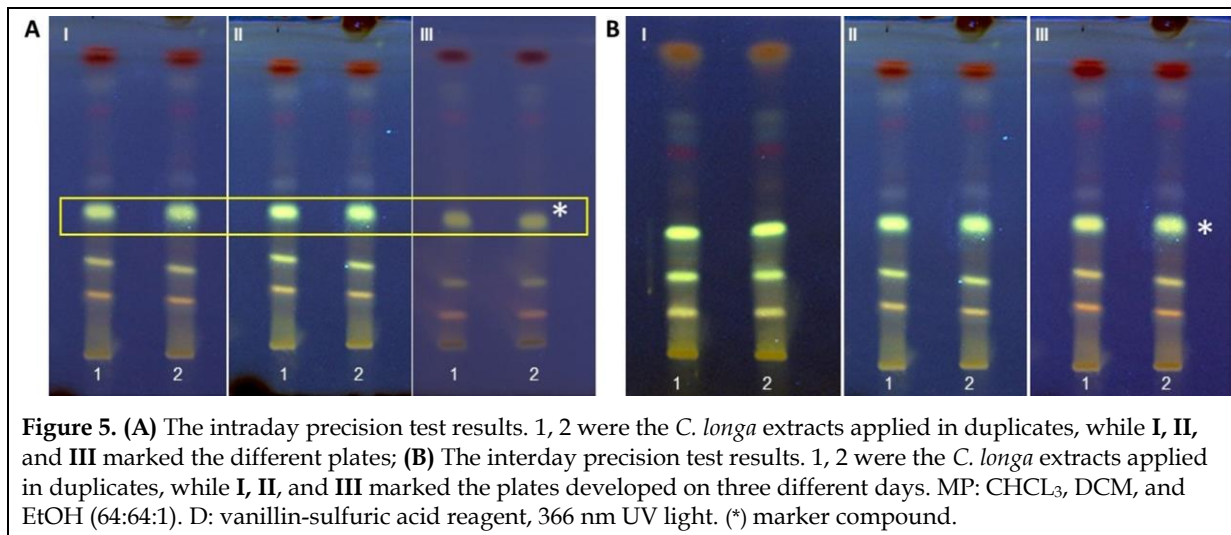


Figure 5. (A) The intraday precision test results. 1, 2 were the *C. longa* extracts applied in duplicates, while I, II, and III marked the different plates; (B) The interday precision test results. 1, 2 were the *C. longa* extracts applied in duplicates, while I, II, and III marked the plates developed on three different days. MP: CHCl₃, DCM, and EtOH (64:64:1). D: vanillin-sulfuric acid reagent, 366 nm UV light. (*) marker compound.

Table 4. The intraday precision test results.

Markers (*)	Tracks					
	I.1	I.2	II.1	II.2	III.1	III.2
Color	Yellowish-green	Yellowish-green	Yellowish-green	Yellowish-green	Yellowish-green	Yellowish-green
Rf values	0.440	0.440	0.421	0.421	0.403	0.403
Mean Rf values	0.440		0.421		0.403	
Δ Rf	0.037					

(*) marker compound.

Table 5. The interday precision test results.

Marker (*)	Track					
	I.1	I.2	II.1	II.2	III.1	III.2
Color	Yellowish-green	Yellowish-green	Yellowish-green	Yellowish-green	Yellowish-green	Yellowish-green
Rf values	0.440	0.440	0.427	0.427	0.452	0.452
Mean Rf values	0.440		0.427		0.452	
Δ Rf	0.03					

(*) marker compound.

However, plates I, II, and III were developed on three different days. Fig. 5B and Table 5 show that the interday precision of the method was acceptable because the ΔRf value of the marker (*) was not more than 0.05 (Reich and Schibli, 2007).

TLC-fingerprints of *C. longa* rhizomes collected from different origins

The TLC profiles of *C. longa* from 9 (nine) locations and one commercial sample before and after derivatization are shown in Fig. 6A-B. All samples

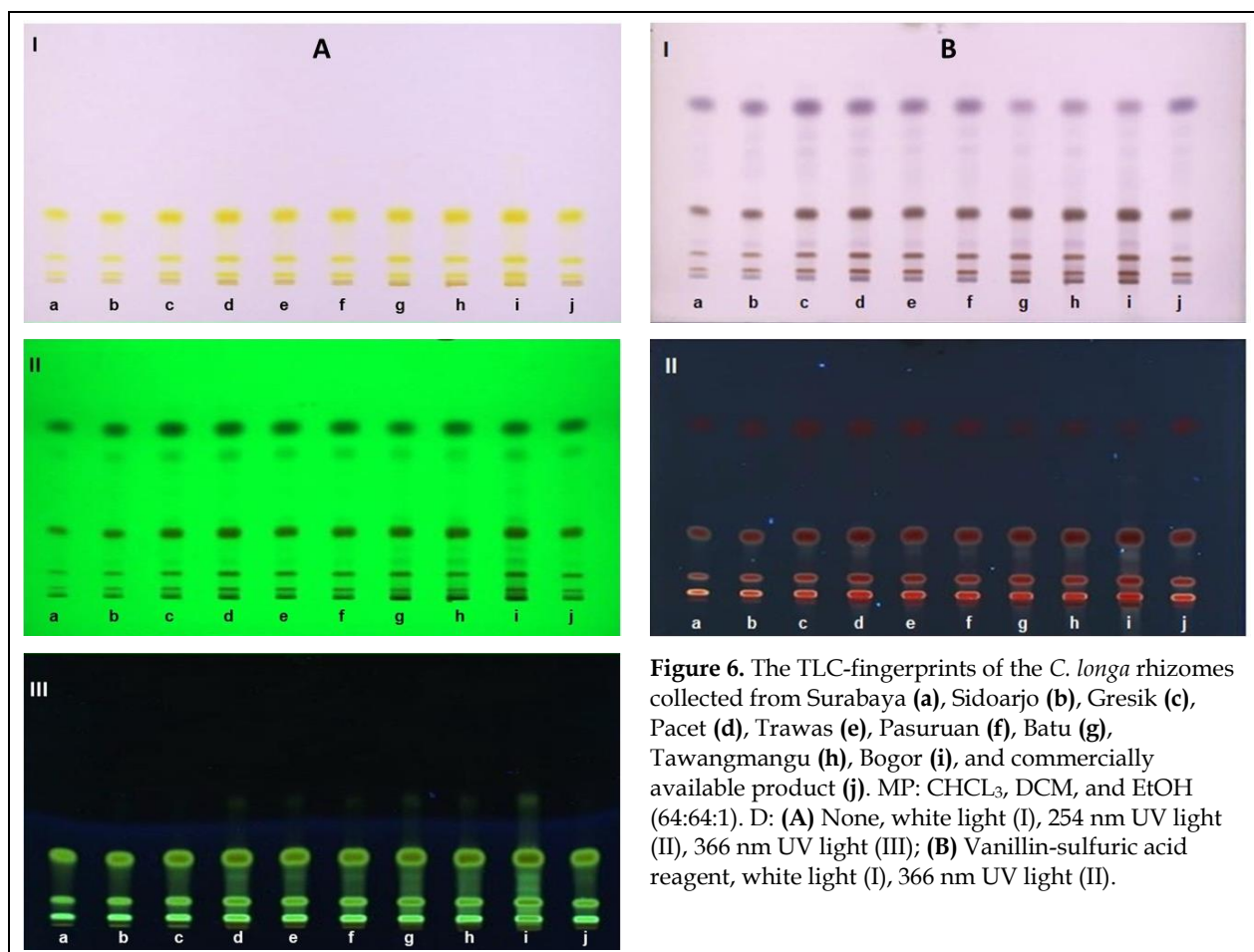


Figure 6. The TLC-fingerprints of the *C. longa* rhizomes collected from Surabaya (a), Sidoarjo (b), Gresik (c), Pacet (d), Trawas (e), Pasuruan (f), Batu (g), Tawangmangu (h), Bogor (i), and commercially available product (j). MP: CHCl₃, DCM, and EtOH (64:64:1). D: (A) None, white light (I), 254 nm UV light (II), 366 nm UV light (III); (B) Vanillin-sulfuric acid reagent, white light (I), 366 nm UV light (II).

show an almost similar pattern. Curcuminoids, as marked by three yellow bands, were detected on all samples. Tracks a and b (samples from Surabaya and Sidoarjo) presented smaller areas of curcuminoid than the others. This result is consistent with the color of the extract, as seen in Fig. 2.

Some purple bands were detected after derivatization with vanillin-sulfuric acid reagent (Fig. 6B.I). These bands were suspected as terpenoids. Tracks c, d, e, and f had more intensive purple bands than the others. Precise comparison of all chromatograms based on merely visual observation is nearly impossible. A more objective technique is required to overcome this issue.

Before the derivatization and visualization under 254 nm UV light, the TLC-fingerprints of the samples were transferred into a videodensitogram (Fig. 7) to show their R_f value, heights, and areas.

The total peak number of each sample varied, with averagely 31 peaks, but showed major peaks at the R_f values of 0.1-0.2, 0.2-0.3, and 0.6-0.7. These peaks can be further studied and considered as a marker compound(s) for *C. longa*. Chemometric analysis was performed on these videodensitograms to compare the chemical components of *C. longa* more objectively.

Principal Component Analysis (PCA) results

The videodensitograms of the *C. longa* extracts from nine origins and one commercial sample were analyzed with a chemometric approach, viz., PCA. The height and area of each peak detected on the videodensitogram were then tabulated based on the origin of the sample (table is not shown). PCA with full cross-validation was applied to the data set from the ten fingerprints of *C. longa*, each with three replications. The height and area of the

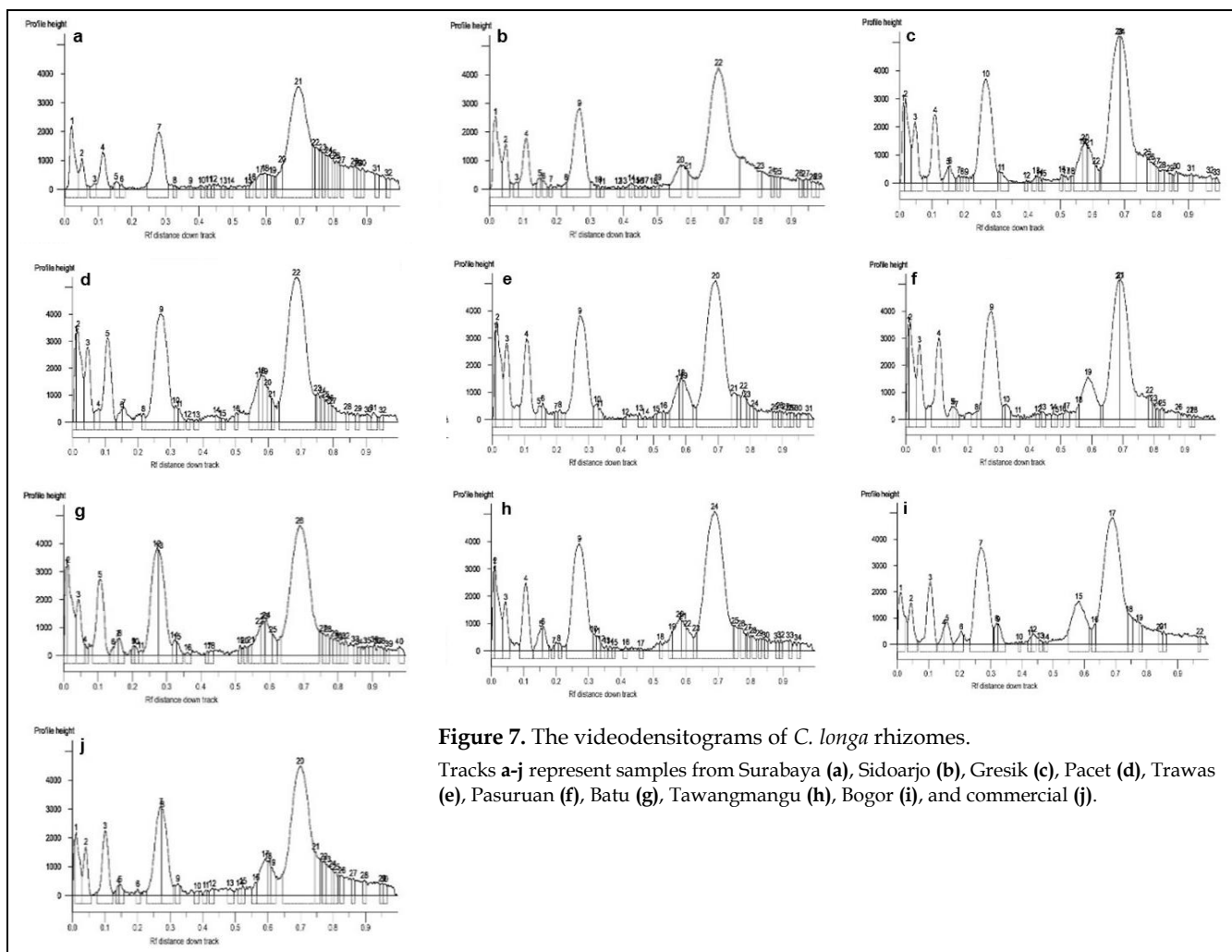


Figure 7. The videodensitograms of *C. longa* rhizomes.

Tracks a-j represent samples from Surabaya (a), Sidoarjo (b), Gresik (c), Pacet (d), Trawas (e), Pasuruan (f), Batu (g), Tawangmangu (h), Bogor (i), and commercial (j).

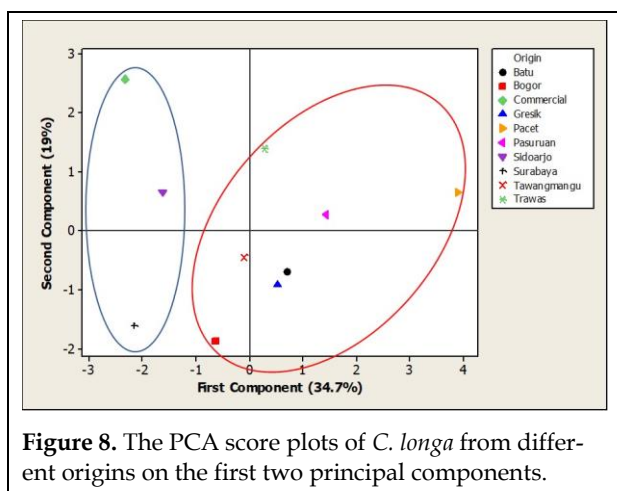


Figure 8. The PCA score plots of *C. longa* from different origins on the first two principal components.

peak in the full fingerprints were analyzed without any preprocessing. The score plot of the first two PCs (Fig. 8) clearly distinguished two groups of samples. The first group consisted of *C. longa* from Surabaya, Sidoarjo, and the commercial sample, whereas the second group included samples from Trawas, Tawangmangu, Bogor, Gresik, Batu, Pasuruan, and Pacet. Samples in Cluster 2 showed that the compounds with the Rf values of 0.6-0.7 were higher than those in Cluster 1. The *C. longa* samples from Surabaya, Sidoarjo, and Gresik represent the population in low-lying areas (0-100 m a.s.l.), while the others typify *C. longa* from moderately elevated altitudes to highlands (>700 m a.s.l.). These results indicate that the grouping of *C. longa* is apparently related to the height of the original location. Two from the three samples col-

lected from low-lying areas were grouped into Cluster 1, but one of them belonged to Cluster 2, the majority of the cluster members was the samples from highland. Because of this finding, further study is needed to investigate other contributing factors. Soil type, rainfall, sunlight, and fertilizer application are predicted to be responsible for the samples grouping (Kartini and Azminah, 2012).

Clustering Analysis (CA) results

Cluster analysis was made as an attempt to derive groups from the autoscaled dataset and to compare them with the previous ones from the PCA. Two main components were taken as a basis for classification. The clusters formed (Fig. 9) showed different characteristics in *C. longa*. In this study, the CA used a complete linkage with the Euclidean distance and found that *C. longa* could be divided into two clusters, as in the PCA. The first cluster consisted of crude drugs originating in Surabaya (1), Sidoarjo (2), and commercial sample (10), while the second cluster included samples from Gresik (3), Pacet (4), Trawas (5), Pasuruan (6), Batu (7), Tawangmangu (8), and Bogor (9). A high similarity was observed between the results of the PCA and CA, confirming that the fingerprint and PCA analysis methods established in this paper are reliable for assessing the quality of *C. longa*.

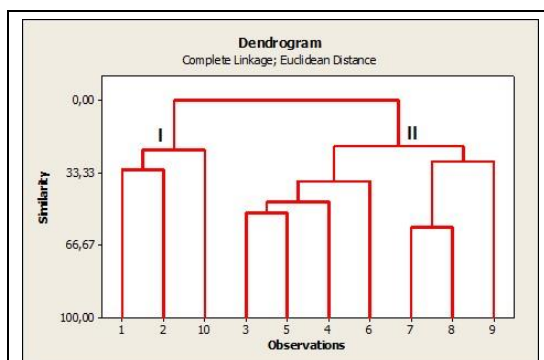


Figure 9. The dendrogram resulted from a complete linkage in the cluster analysis.

The number represents the origin of the sample: Surabaya (1), Sidoarjo (2), Gresik (3), Pacet (4), Trawas (5), Pasuruan (6), Batu (7), Tawangmangu (8), Bogor (9), and commercial (10).

CONCLUSIONS

The TLC method developed in this study fulfills the validation parameters for TLC-fingerprint, especially in terms of stability and precision. When combined with PCA and CA, TLC-fingerprinting can discriminate between the rhizomes of *Curcuma longa* originated in various locations. The development of a simple analytical method for the geographical provenance of *C. longa* will positively affect the quality control of this herbal material, which will ultimately guarantee the safety and efficacy of the product.

CONFLICT OF INTEREST

The authors declare no conflicts of interests.

ACKNOWLEDGMENTS

The authors are thankful to the Ministry of Research and Technology/National Research and Innovation Agency of the Republic of Indonesia for financially supporting this research under PDUPT Research Scheme with the grant number 008/SP-Lit/LPPM-01/RistekBRIN/Multi/FF/IV/2021.

REFERENCES

- Akram M, Shahab-Uddin AA, Usmanghani K, Hannan A, Mohiuddin E, Asif M (2010) *Curcuma longa* and curcumin: a review article. *Rom J Biol Plant Biol* 55: 65-70.
- Amalraj A, Pius A, Gopi S, Gopi S (2017) Biological activities of curcuminoids, other biomolecules from turmeric and their derivatives-A review. *J Tradit Complement Med* 7: 205-233.
- Bansal A, Chhabra V, Rawal RK, Sharma S (2014) Chemometrics: a new scenario in herbal drug standardization. *J Pharm Anal* 4: 223-233.
- Brereton RG (2003) Chemometrics: data analysis for the laboratory and chemical plant: John Wiley & Sons.
- Daily JW, Yang M, Park S (2016) Efficacy of turmeric extracts and curcumin for alleviating the symptoms of joint arthritis: a systematic review and meta-analysis of randomized clinical trials. *J Med Food* 19: 717-729.
- Deshpande SS, Ingle AD, Maru G (1997) Inhibitory effects of curcumin-free aqueous turmeric extract on benzo [a] pyrene-induced forestomach papillomas in mice. *Cancer Lett* 118: 79-85.
- Deshpande SS, Ingle AD, Maru GB (1998) Chemopreventive efficacy of curcumin-free aqueous turmeric extract in 7, 12-dimethylbenz [a] anthracene-induced rat mammary tumorigenesis. *Cancer Lett* 123: 35-40.

- Gad HA, El-Ahmady SH, Abou-Shoer MI, Al-Azizi MM (2013) Application of chemometrics in authentication of herbal medicines: a review. *Phytochem Anal* 24: 1–24.
- Gupta SC, Kismali G, Aggarwal BB (2013) Curcumin, a component of turmeric: from farm to pharmacy. *Biofactors* 39: 2–13.
- Kartini, Azminah (2012) Chromatographic fingerprinting and clustering of *Plantago major* L. from different areas in Indonesia. *Asian J Pharm Clin Res* 5: 191–195.
- Kim JH, Gupta SC, Park B, Yadav VR, Aggarwal BB (2012) Turmeric (*Curcuma longa*) inhibits inflammatory nuclear factor (NF)- κ B and NF- κ B-regulated gene products and induces death receptors leading to suppressed proliferation, induced chemosensitization, and suppressed osteoclastogenesis. *Mol Nutr Food Res* 56: 454–465.
- Komsta Ł (2012) Chemometrics in fingerprinting by means of thin layer chromatography. *Chromatography Research International* 2012: 893246.
- Niranjan A, Prakash D (2008) Chemical constituents and biological activities of turmeric (*Curcuma longa* L.)-a review. *J Food Sci Technol* 45: 109–116.
- Nishiyama T, Mae T, Kishida H, Tsukagawa M, Mimaki Y, Kuroda M, Sashida Y, Takahashi K, Kawada T, Nakagawa K (2005) Curcuminoids and sesquiterpenoids in turmeric (*Curcuma longa* L.) suppress an increase in blood glucose level in type 2 diabetic KK-Ay mice. *J Agric Food Chem* 53: 959–963.
- Paulucci VP, Couto RO, Teixeira CC, Freitas LaP (2013) Optimization of the extraction of curcumin from *Curcuma longa* rhizomes. *Rev Bras Farmacogn* 23: 94–100.
- Reich E, Schibli A (2007) High-performance thin-layer chromatography for the analysis of medicinal plants. New York: Thieme, pp. 280.
- Ri D (2008) Farmakope Herbal Indonesia Edisi I. Jakarta: Departemen Kesehatan Republik Indonesia.
- Rohaeti E, Rafi M, Syafitri UD, Heryanto R (2015) Fourier transform infrared spectroscopy combined with chemometrics for discrimination of *Curcuma longa*, *Curcuma xanthorrhiza* and *Zingiber cassumunar*. *Spectrochim Acta A Mol Biomol Spectrosc* 137: 1244–1249.
- Sogi D, Sharma S, Oberoi D, Wani I (2010) Effect of extraction parameters on curcumin yield from turmeric. *J Food Sci Technol* 47: 300–304.
- Suryanarayana P, Saraswat M, Mrudula T, Krishna TP, Krishnaswamy K, Reddy GB (2005) Curcumin and turmeric delay streptozotocin-induced diabetic cataract in rats. *Invest Ophthalmol Vis Sci* 46: 2092–2099.
- Tistaert C, Dejaegher B, Heyden YV (2011) Chromatographic separation techniques and data handling methods for herbal fingerprints: a review. *Anal Chim Acta* 690: 148–161.
- Wakte PS, Sachin B, Patil A, Mohato D, Band T, Shinde D (2011) Optimization of microwave, ultra-sonic and supercritical carbon dioxide assisted extraction techniques for curcumin from *Curcuma longa*. *Sep Purif Technol* 79: 50–55.
- Wichitnithad W, Jongaroonngamsang N, Pummangura S, Rojsitthisak P (2009) A simple isocratic HPLC method for the simultaneous determination of curcuminoids in commercial turmeric extracts. *Phytochem Anal* 20: 314–319.
- Yang J, Chen LH, Zhang Q, Lai MX, Wang Q (2007) Quality assessment of *Cortex cinnamomi* by HPLC chemical fingerprint, principle component analysis and cluster analysis. *J Sep Sci* 30: 1276–1283.

AUTHOR CONTRIBUTION:

Contribution	Kartini K	Andriani YA	Priambodo W	Jayani NIE	Hadiyat MA
Concepts or ideas	x			x	x
Design	x			x	x
Definition of intellectual content	x				
Literature search	x	x	x	x	x
Experimental studies	x	x	x	x	
Data acquisition	x	x	x	x	
Data analysis	x			x	x
Statistical analysis					x
Manuscript preparation	x			x	
Manuscript editing	x				x
Manuscript review	x	x	x	x	x

Citation Format: Kartini K, Andriani YA, Priambodo W, Jayani NIE, Hadiyat MA (2021) Validating and developing TLC-based fingerprinting for *Curcuma longa* L. *J Pharm Pharmacogn Res* 9(5): 704–715.

Journal of

**Pharmacy
& Pharmacognosy Research**



**Exposome****Submit Your Research**

Publishing cutting edge research that extends our understanding of the human exposome

academic.oup.com

OPEN

Journal of Pharmacy and Pharmacognosy Research**COUNTRY**

Chile

Universities and research institutions in Chile

SUBJECT AREA AND CATEGORYPharmacology, Toxicology and
Pharmaceutics
Drug Discovery
Pharmaceutical Science
Pharmacology**PUBLISHER**Asociacion Academica de Ciencias
Farmaceuticas de Antofagasta (ASOCIFA)**H-INDEX**

9

PUBLICATION TYPE

Journals

ISSN

07194250

COVERAGE

2013-2020

INFORMATION[Homepage](#)[How to publish in this journal](#)editor@jppres.com**Exposome****A New Open Access Journal**

Read the Editor-in-Chief's inaugural ed

academic.oup.com

OPEN

SCOPE

The Journal of Pharmacy & Pharmacognosy Research (JPPRes) is an international, specialized and peer-reviewed open access journal, under the auspices of AVAGAX – Diseño, Publicidad y Servicios Informáticos, which publishes studies in the pharmaceutical and herbal fields concerned with the physical, botanical, chemical, biological, toxicological properties and clinical applications of molecular entities, active pharmaceutical ingredients, devices and delivery systems for drugs, vaccines and biologicals, including their design, manufacture, evaluation and marketing. This journal publishes research papers, reviews, commentaries and letters to the editor as well as special issues and review of pre-and post-graduate thesis from pharmacists or professionals involved in Pharmaceutical Sciences or Pharmacognosy.

Join the conversation about this journal

Bioinformatics Advances**Submit Your Research**

Learn more about the Bioinformatics Advances submission process and requirements

academic.oup.com

OPEN

Bioinformatics Advances

Submit Your Research

Learn more about the Bioinformatics Advances submission process and requirements

academic.eup.com

[OPEN](#)

FIND SIMILAR JOURNALS

options :

- | | | | | |
|---|--|--|---|--|
| <p>1</p> <p>Journal of Traditional and Complementary Medicine
NLD</p> <p>73%
similarity</p> | <p>2</p> <p>Tropical Journal of Natural Product Research
NGA</p> <p>71%
similarity</p> | <p>3</p> <p>Pharmacologyonline
ITA</p> <p>69%
similarity</p> | <p>4</p> <p>Pharmacognosy Journal
IND</p> <p>68%
similarity</p> | <p>5</p> <p>Journal of Ethnopharmacology
IRL</p> <p>67%
similarity</p> |
|---|--|--|---|--|

Bioinformatics Advances

Submit Your Research

Learn more about the Bioinformatics Advances submission process and requirements

academic.eup.com

[OPEN](#)



Journal of Pharmacy and Pharmacognosy Research

Pharmaceutical Science

Q3

best quartile

SJR 2020

0.2

powered by scimagojr.com

← Show this widget in your own website

Just copy the code below and paste within your html code:

```
<a href="https://www.scimagojr.com">
```

SCImago Graphica

Explore, visually communicate and make sense of data with our **new free tool**.

Get it





Source details

Journal of Pharmacy and Pharmacognosy Research

Scopus coverage years: from 2013 to Present

Publisher: Asociacion Academica de Ciencias Farmaceuticas de Antofagasta (ASOCIFA)

E-ISSN: 0719-4250

Subject area: [Pharmacology, Toxicology and Pharmaceutics: Pharmaceutical Science](#)

[Pharmacology, Toxicology and Pharmaceutics: Pharmacology](#)

[Pharmacology, Toxicology and Pharmaceutics: Drug Discovery](#)

Source type: Journal

CiteScore 2020

1.3



SJR 2020

0.204



SNIP 2020

0.477



[View all documents >](#)

[Set document alert](#)

[Save to source list](#) [Source Homepage](#)

[CiteScore](#) [CiteScore rank & trend](#) [Scopus content coverage](#)

i Improved CiteScore methodology



CiteScore 2020 counts the citations received in 2017-2020 to articles, reviews, conference papers, book chapters and data papers published in 2017-2020, and divides this by the number of publications published in 2017-2020. [Learn more >](#)

CiteScore 2020

$$1.3 = \frac{215 \text{ Citations } 2017 - 2020}{172 \text{ Documents } 2017 - 2020}$$

Calculated on 05 May, 2021

CiteScoreTracker 2021

$$1.3 = \frac{268 \text{ Citations to date}}{213 \text{ Documents to date}}$$

Last updated on 04 September, 2021 • Updated monthly

CiteScore rank 2020

Category	Rank	Percentile
Pharmacology, Toxicology and Pharmaceutics	#97/166	41st
Pharmaceutical Science		
Pharmacology, Toxicology and Pharmaceutics	#224/297	24th
Pharmacology		

[View CiteScore methodology >](#) [CiteScore FAQ >](#) [Add CiteScore to your site](#)

About Scopus

[What is Scopus](#)
[Content coverage](#)
[Scopus blog](#)
[Scopus API](#)
[Privacy matters](#)

Language

[日本語に切り替える](#)
[切换到简体中文](#)
[切换到繁體中文](#)
[Русский язык](#)

Customer Service

[Help](#)
[Contact us](#)

ELSEVIER

[Terms and conditions](#) ↗ [Privacy policy](#) ↗

Copyright © Elsevier B.V. ↗. All rights reserved. Scopus® is a registered trademark of Elsevier B.V.

We use cookies to help provide and enhance our service and tailor content. By continuing, you agree to the use of cookies.

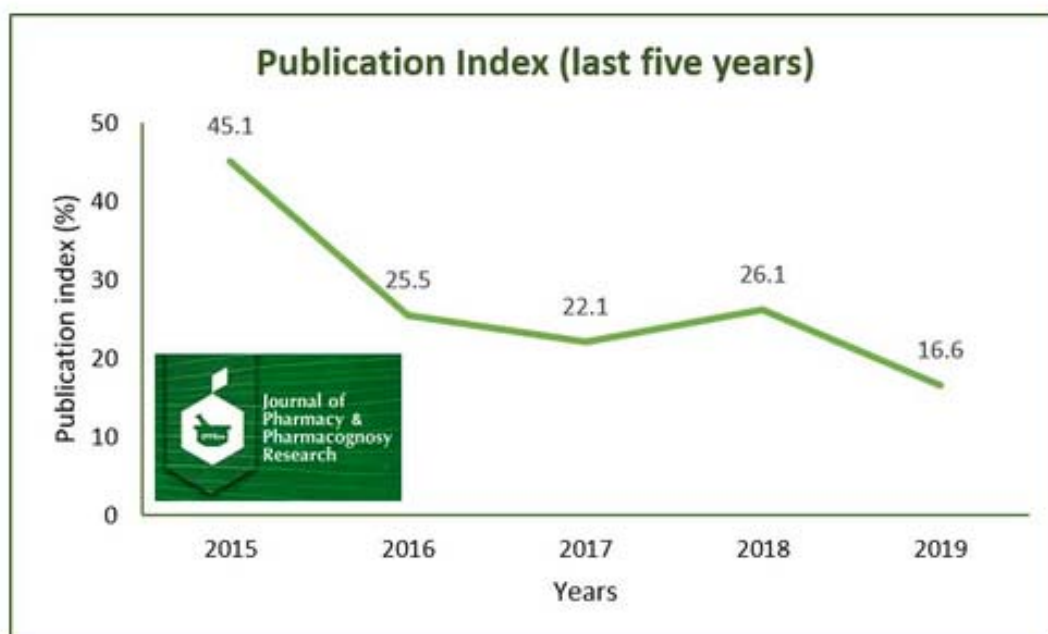
 RELX



DESCRIPTION

The Journal of Pharmacy & Pharmacognosy Research (JPPRes) is an international, specialized and peer-reviewed open access journal, under the auspices of **AVAGAX – Diseño, Publicidad y Servicios Informáticos**, which publishes studies in the pharmaceutical and herbal fields concerned with the physical, botanical, chemical, biological, toxicological properties and clinical applications of molecular entities, active pharmaceutical ingredients, devices and delivery systems for drugs, vaccines and biologicals, including their design, manufacture, evaluation and marketing. This journal publishes research papers, reviews, commentaries and letters to the editor as well as special issues and review of pre- and post-graduate thesis from pharmacists or professionals involved in Pharmaceutical Sciences or Pharmacognosy.

JPPRes has an acceptance rate of 16.6% (2019). The average time between submission and final decision is 70 days and the average time between acceptance and final publication is 15 days.



Manuscripts submitted to JPPRes are only accepted on the understanding that they are subject to editorial review and that they have not been, and will not be, published in whole or in part in any other journal.

The URL of the journal website is jppres.com/jppres. The e-mail is editor@jppres.com



Editor-in-Chief:

Gabino Garrido [[Scholar Google](#)] [[Scopus](#)] [[ResearchGate](#)] [[ORCID](#)]

Departamento de Ciencias Farmacéuticas

Universidad Católica del Norte

Antofagasta

Chile

E-mail: editor@jppres.com

Executive Editor:

Marisela Valdés González

Departamento de Ciencias Farmacéuticas

Universidad Católica del Norte

Antofagasta

Chile

E-mail: jppres12@gmail.com

Editorial and Design Manager:

Xavier Garrido Valdés. AVAGAX – Diseño, Publicidad y Servicios Informáticos, Antofagasta, Chile.

Editorial Board Members:

Antonio Vassallo. Dipartimento di Scienze. Università degli Studi della Basilicata, Potenza, Italia. [[ResearchGate](#)] [[ORCID](#)][[Scopus](#)]

Bárbara Beatriz Garrido Suárez. Laboratorio de Farmacología y Toxicología, Centro de Investigación y Desarrollo de Medicamentos, La Habana, Cuba. [[ResearchGate](#)]

Carla Delporte. Facultad de Ciencias Químicas y Farmacéuticas, Universidad de Chile, Santiago, Chile. [[ResearchGate](#)][[ORCID](#)]

Damaris Silveira. Faculdade de Ciências da Saúde, Universidade de Brasília, Brazil. [[Lattes](#)][[ORCID](#)]

Douglas Siqueira de Almeida Chaves. Dep. de Ciências Farmacêuticas (DCFAR), Instituto de Ciências Biológicas e da Saúde, Universidade Federal Rural do Rio de Janeiro, Rodovia, RJ. Brazil. [[Lattes](#)][[ORCID](#)][[ResearchGate](#)]

Edgar Pastene. Universidad de Concepción, Concepción, Chile. [[ResearchGate](#)][[ORCID](#)]

Etile Spegazzini. Universidad de Belgrano, Buenos Aires, Argentina. [[ResearchGate](#)]

Farid Chemat. Université Avignon et des Pays de Vaucluse, Avignon, France [[ResearchGate](#)]

Fidel O. Castro. Departamento de Ciencias Pecuarias, Universidad de Concepción, Chillán, Chile. [[ResearchGate](#)][[ORCID](#)]

Guilherme Nobre L. do Nascimento. Universidade Federal de Tocantins. Brazil. [[ORCID](#)]
[[Lattes](#)]

Jacqueline Sepúlveda. Universidad de Concepción, Concepción, Chile

Jelena Nadinic. Universidad de Buenos Aires, Argentina. [[ResearchGate](#)]

José H. Isaza-Martínez. Universidad del Valle, Cali, Colombia. [[ORCID](#)][[ResearchGate](#)]

Juan C. Sepúlveda-Arias. Universidad Tecnológica de Pereira, Pereira, Colombia. [[ORCID](#)]
[[ResearchGate](#)]

Madan Mohan Gupta. School of Pharmacy, Faculty of Medical Sciences. The University of the West Indies, Trinidad & Tobago, West Indies. [[Google Scholar](#)]

Mahomoodally M. Fawzi. Department of Health Sciences, Faculty of Science, University of Mauritius. Mauritius. [[ORCID](#)][[ResearchGate](#)]

María Inés Isla. Facultad de Ciencias Naturales e Instituto Miguel Lillo. Universidad Nacional de Tucumán, Tucumán, Argentina. [[ORCID](#)][[ResearchGate](#)]

Marisol Fernández Alfonso. Facultad de Farmacia, Universidad Complutense de Madrid, España.[[ORCID](#)][[ResearchGate](#)]

Mayank Gangwar. Department of Pharmacology, Institute of Medical Sciences, Banaras Hindu University, Varanasi (UP) India. [[ORCID](#)][[Google Scholar](#)]

Silvia Debenedetti. Pharmacy Career. Universidad de Belgrano, Buenos Aires, Argentina. [[ORCID](#)][[ResearchGate](#)]

Vikash Kumar Ruhil. PDM College of Pharmacy, Bahadurgarh, Haryana, India. [[Google Scholar](#)]

Yasser Shahzad. Department of Pharmacy. COMSATS University Islamabad, Pakistan. [[ORCID](#)][[Scopus](#)][[Google Scholar](#)]

Reviewers

The reviewers will be recruited among researchers and clinicians with high international reputation in Pharmacy and Pharmacognosy.

Volume 9, Issue 5


J Pharm Pharmacogn Res 9(5), (Sep-Oct) 2021

Journal of
**Pharmacy
& Pharmacognosy Research**




IFC (Journal of Pharmacy & Pharmacognosy Research).


1.- Original Article

Emilia C. Vargas, Wendy L. Cruz, Anahí E. Hernández, Dayanna M. Alvarado (2021) **Buenas prácticas de almacenamiento de medicamentos en el Hospital Escuela de Tegucigalpa, Honduras.** | [Good storage practices for medicines at Hospital Escuela of Tegucigalpa, Honduras]. J Pharm Pharmacogn Res 9(5): 563-572.  [322 Kb] [ABSTRACT | RESUMEN]


2.- Original Article

Ni Luh Dewi Aryani, Siswandono, Wdji Soeratri, Dian Yulyandani Putri, Pingky Dwi Puspitasarini (2021) **Development, characterization *in vitro* and *in silico* of coenzyme Q10 loaded myristic acid with different liquid lipids nanostructured lipid carriers.** | [Desarrollo, caracterización *in vitro* e *in silico* de coenzima Q10 cargado de ácido mirístico con diferentes lípidos líquidos portadores de lípidos nanoestructurados]. J Pharm Pharmacogn Res 9(5): 573-583.  [625 Kb] [ABSTRACT | RESUMEN]


3.- Original Article

Khoirin Maghfiroh, Sri Widyarti, Jati Batoro, Sutiman B. Sumitro (2021) **Ethnopharmacological study of flavonoid compounds in *Magnolia champaca* (L.) Baill. ex Pierre as anti-inflammatory agents by molecular docking.** | [Estudio etnofarmacológico de compuestos flavonoides en *Magnolia champaca* (L.) Baill. ex Pierre como agentes antiinflamatorios por acoplamiento molecular]. J Pharm Pharmacogn Res 9(5): 584-597.  [867 Kb] [ABSTRACT | RESUMEN]


4.- Original Article

Cheryl GP. Rumahorbo, Salomo Hutahaean, Syafruddin Ilyas (2021) **Insulin expression and insulinitis degree of diabetic rats after giving sikkam leaves (*Bischofia javanica* Blume).** | [Expresión de insulina y grado de insulinitis de ratas diabéticas después de administrar hojas de sikkam (*Bischofia javanica* Blume)]. J Pharm Pharmacogn Res 9(5): 598-608.  [587 Kb] [ABSTRACT | RESUMEN]


5.- Original Article

Citra Lestari, Eryati Darwin, Deddi Prima Putra, Netti Suharti (2021) **The α -mangostin effect on the quantity of TGF- β 1 titer relate to the mandibular bone volume of *Rattus novergicus* in the periodontitis model.** | [Efecto de α -mangostin sobre los títulos de TGF- β 1 que se relacionan con el volumen óseo mandibular de *Rattus novergicus* en el modelo de periodontitis]. J Pharm Pharmacogn Res 9(5): 609-618.  [510 Kb] [ABSTRACT | RESUMEN]


6.- Original Article

Souad Belhaj, Nouredine Chaachouay, Lahcen Zidane (2021) **Ethnobotanical and toxicology study of medicinal plants used for the treatment of diabetes in the High Atlas Central of Morocco.** | [Estudio etnobotánico y toxicológico de las plantas medicinales utilizadas para el tratamiento de la diabetes en el Alto Atlas Central de Marruecos]. J Pharm Pharmacogn Res 9(5): 619-662.  [1.21 Mb] [ABSTRACT | RESUMEN]

7.- Original Article

Nhu Hiep Pham, Huu Son Nguyen, Kiem Hao Tran, Nguyen Cuong Pham (2021) **Profile and management of pediatric brain tumors: A single-center experience.** | [Perfil y tratamiento de los tumores cerebrales pediátricos: una experiencia de un solo centro]. J Pharm Pharmacogn Res 9(5): 663-667.  [231 Kb] [ABSTRACT | RESUMEN]

8.- Original Article

Oluwafemi Adeleke Ojo, Damilare Rotimi, Ayomide Emmanuel Bright, Omowumi Titilola Kayode, Adebola Busola Ojo, Omokolade Oluwaseyi Alejolowo, Basiru Olaitan Ajiboye, Olarewaju M. Oluba (2021) **Gallic acid protects against cadmium chloride-induced alterations in Wistar rats via the antioxidant defense mechanism.** | [El ácido gálico protege contra las alteraciones inducidas por el cloruro de cadmio en ratas Wistar a través del mecanismo de defensa antioxidante]. J Pharm Pharmacogn Res 9(5): 668-676.  [892 Kb] [ABSTRACT | RESUMEN]


9.- Original Article

Ouafa Amrani, Mohamed Marghich, Hanane Makrane, Chakib Alem, Mohammed Aziz (2021)


Antispasmodic activity of *Warionia saharae* Benthem ex Benth. & Coss. on the rabbit and rat jejunums. | [Actividad antiespasmódica de *Warionia saharae* Benthem ex Benth. & Coss. sobre yeyunos de conejo y rata]. J Pharm Pharmacogn Res 9(5): 677-684.  [459 Kb] [ABSTRACT | RESUMEN]

10.- Original Article


Nisrine Chlif, Mohammed Diouri, Noureddine El Messaoudi, Aissam Sbai, Amar Bentayeb (2021)

Ethnobotanical and agronomical survey of *Brocchia cinerea* (Delile) Vis. plant used by people in the Figuig and Draa-Tafilalet regions, Morocco. | [Estudio etnobotánico y agronómico de la planta *Brocchia cinerea* (Delile) Vis. utilizada por personas en las regiones de Figuig y Draa-Tafilalet, Marruecos]. J Pharm Pharmacogn Res 9(5): 685-694.  [399 Kb] [ABSTRACT | RESUMEN]

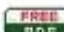
11.- Original Article

Anh Dung Nguyen, Tuong-Anh Mai-Phan, Minh Hoang Tran, Hong Tham Pham (2021) **The effect of early switching from intravenous to oral antibiotic therapy: a randomized controlled trial.** | [El efecto del cambio temprano de la terapia con antibióticos intravenosos a orales: un ensayo controlado aleatorio]. J Pharm Pharmacogn Res 9(5): 695-703.  [395 Kb] [ABSTRACT | RESUMEN]


12.- Original Article

Kartini Kartini, Yunita A. Andriani, Widho Priambodo, Nikmatul I.E. Jayani, Mochammad A. Hadiyat (2021) **Validating and developing TLC-based fingerprinting for *Curcuma longa* L.** | [Validación y desarrollo de huellas dactilares basadas en TLC para *Curcuma longa* L.]. J Pharm Pharmacogn Res 9(5): 704-715.  [819 Kb] [ABSTRACT | RESUMEN]


13.- Original Article

Rushabh S. Shah, Jeet Ravat, Misbah A. Momin, Alka P. Mukne (2021) **Antidiarrheal activity of aqueous extract of leaves of *Euphorbia hirta* L.** | [Actividad antidiarreica del extracto acuoso de hojas de *Euphorbia hirta* L.]. J Pharm Pharmacogn Res 9(5): 716-729.  [764 Kb] [ABSTRACT | RESUMEN]

14.- Original Article

Arli Aditya Parikesit, Rizky Nurdiansyah (2021) **Natural products repurposing of the H5N1-based lead compounds for the most fit inhibitors against 3C-like protease of SARS-CoV-2.** | [Reutilización de productos naturales de compuestos principales basados en H5N1 para los inhibidores más adecuados contra la proteasa similar a 3C del SARS-CoV-2]. J Pharm Pharmacogn Res 9(5): 730-745.  [1 Mb] [\[ABSTRACT | RESUMEN\]](#)

15.- Original Article

Chiquita Prahasanti, Alexander Patera Nugraha, Viol Dhea Kharisma, Arif Nur Muhammad Ansori, Rini Devijanti Ridwan, Tansza Permata Setiana Putri, Nastiti Faradilla Ramadhani, Ida Bagus Narmada, I Gusti Aju Wahyu Ardani, Tengku Natasha Eleena Binti Ahmad Noor (2021) **A bioinformatic approach of hydroxyapatite and polymethylmethacrylate composite exploration as dental implant biomaterial.** | [Un enfoque bioinformático de la exploración con compuestos de hidroxiapatita y polimetilmetacrilato como biomaterial de implantes dentales]. J Pharm Pharmacogn Res 9(5): 746-754.  [406 Kb] [\[ABSTRACT | RESUMEN\]](#)
