

Elevated fibrinogen and fibrin degradation product are associated with poor outcome in COVID-19 patients: A meta-analysis

Johanes Nugroho^{a,c,*}, Ardyan Wardhana^b, Eka Prasetya Mulia^c, Irma Maghfirah^c,
Dita Aulia Rachmi^c, Maya Qurota A'yun^c and Imanita Septianda^c

^a*Department of Cardiology and Vascular Medicine, Faculty of Medicine, Universitas Airlangga, Surabaya, Indonesia*

^b*Faculty of Medicine, Universitas Surabaya, Indonesia*

^c*Dr. Soetomo General Hospital, Surabaya, Indonesia*

Abstract.

INTRODUCTION: COVID-19 is a systemic infection with a significant impact on coagulation which manifests in thromboembolism. There is an unknown relationship of which coagulation profile parameter at presentation has an association with poor outcome in COVID-19.

OBJECTIVE: This meta-analysis aimed to determine the relationship between fibrinogen and FDP with poor outcome in COVID-19 patients.

METHODS: A systematic search of all observational studies or trials involving adult patients with COVID-19 that had any data fibrinogen or FDP on admission was carried out using the PubMed, Science Direct, Scopus, ProQuest, and MedRxiv databases. We assessed the methodological quality assessment using the NIH Quality Assessment Tool. We performed random-effects inverse-variance weighting analysis using mean difference (MD).

RESULTS: A total of 17 studies (1,654 patients) were included in this meta-analysis. It revealed a higher mean of fibrinogen levels on admission in patients with severe case compared to those with non-severe case (MD = 0.69, [95% CI: 0.44 to 0.94], $p < 0.05$; I² = 72%, $p < 0.05$). Non-survivor group had a pooled higher mean difference of fibrinogen values on admission (MD = 0.48 [95% CI: 0.13 to 0.83], $p < 0.05$; I² = 38%, $p = 0.18$). Higher FDP on admission was found in poor outcome (composite of severity, critically ill, and mortality) compared to good outcome (4 studies, MD = 4.84 [95% CI: 0.75 to 8.93], $p < 0.05$; I² = 86%, $p < 0.05$).

CONCLUSION: Elevated fibrinogen and FDP level on admission were associated with an increase risk of poor outcome in COVID-19 patients.

Keywords: COVID-19, fibrinogen, fibrin degradation product, severity, mortality, prognostic factor

1. Introduction

COVID-19 is a systemic infection with a significant impact on coagulation which manifests in thromboembolism. Furthermore, disseminated intravascular coagulopathy appeared in most of the deaths [1]. At the late stages of COVID-19, a common coagulation activation and secondary hyperfibrinolysis condition occurred and accompanied with elevated levels of fibrin-related markers (D-dimer and fibrin degradation product [FDP]) and low fibrinogen level [2].

At initial presentation of coagulopathy, patients with COVID-19 presents with a prominent elevation of fibrinogen and FDP [3]. Some studies showed that significant coagulopathy was present in

*Corresponding author: Johanes Nugroho. E-mail: j.nugroho.eko@fk.unair.ac.id.

COVID-19 patients with elevated fibrinogen at presentation [4]. Nevertheless, there is an unknown relationship of which coagulation profile parameter at presentation has an association with severity and mortality in COVID-19. This meta-analysis aimed to determine the relationship between fibrinogen and FDP with poor outcome in COVID-19 patients.

2. Methods

This study in accordance with the PRISMA guidelines (Preferred Reporting Items for Systematic Reviews and Meta-Analyses) [5]. We selected all observational studies involving adult patients with COVID-19 that had any fibrinogen and FDP data for comparison severe vs. non-severe, and survivor vs. non-survivor. We excluded any study that had missing required data, fibrinogen and FDP data not collected on admission, and data not presented in numerical variables.

A systematic search of the literature was carried out on May 15, 2020, after receiving approval from the Institutional Review Board. Five different databases (PubMed, Science Direct, Scopus, ProQuest, and MedRxiv) were used to perform a systematic search of all the literature using the keywords “intensive” and “laboratory” and “fibrinogen” OR “fibrinogen degradation products OR FDP” and “COVID-19” or “coronavirus 2019” or “2019-nCoV” or “SARS-CoV-2” in the title, abstract, and medical subject heading (MeSH). Reference lists of the included studies were also screened to identify additional relevant studies.

Three investigators independently screened and assessed titles and abstracts before full-text retrieval. The full papers that potentially met the inclusion/exclusion criteria were reviewed by the two authors for final inclusion. Subsequently, two investigators extracted the data, including authors, year of publication, location, study design, peer-reviewed publication status, severity measurement, and fibrinogen and FDP level in each comparison group. All extracted data were recorded with a dedicated form on an Excel spreadsheet.

The primary outcome in our meta-analysis was fibrinogen on admission based on severity. All definition of severity was used in this meta-analysis. If the study categorized severity into 3 or 4 groups, we combined the data between mild and moderate groups into one group as non-severe; severe and critical group into one group as severe. The average of their mean and standard deviation was calculated using the formula in Table 7.7.a of the Cochrane Handbook [6]. The secondary outcomes were fibrinogen on admission based on mortality and FDP level on admission based on composite poor outcome that comprised of severity and mortality.

Two authors independently assessed the methodological quality assessment using the NIH Quality Assessment Tool for Observational Cohort and Cross-Sectional Studies [7]. Publication bias assessed using visual inspection of funnel plots and Egger’s regression test [8]. We conducted the meta-analysis using mean difference (MD) for fibrinogen and FDP values. Mean and standard deviation were extrapolated from sample size, median, and interquartile range (IQR), according to Wan et al. [9]. We employed a random-effects and inverse-variance weighting using Review Manager (RevMan v5.3 2014). We performed subgroup analysis based on study design. Sensitivity analysis was done using leave-one-out method to assess the cause of heterogeneity. We evaluated between and within-study heterogeneity using the I^2 statistic.

3. Results

Initial search provided 161 records from the PUBMED, 100 records from Science Direct, 107 records from ProQuest, 82 records from Scopus database, 111 records from Medxiv database, and

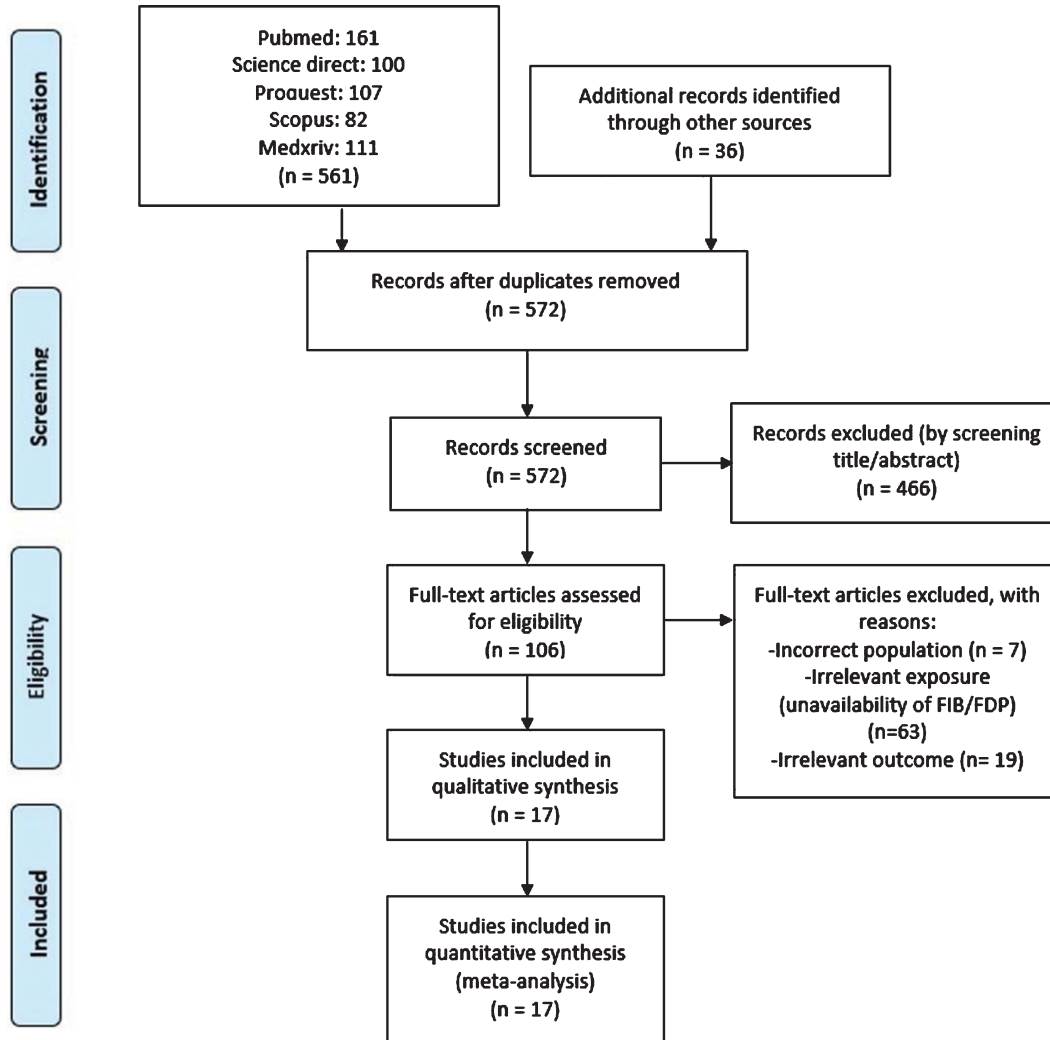


Fig. 1. Study flow chart (as per PRISMA guideline).

36 records from other sources as shown in Fig. 1. After removing the duplicate and screening of title and abstracts, 106 full texts were then assessed for eligibility. A total of 89 were excluded because of incorrect patient population ($n=7$), unavailability of data on fibrinogen or fibrin degradation product ($n=63$), and irrelevant outcome ($n=19$). Totally, we included 17 studies (1,654 patients) for analysis.

The baseline characteristics of the included studies are presented in Table 1. Fifteen studies were retrospective, and two studies were prospective observational. Ten studies have already been undergone peer-review [2, 10–18]. Most of the studies classified the severity according to the National Health Commission of People's Republic of China.

We assessed all studies' quality based on NHLBI quality assessment resulting in good and fair methodology qualities in all included studies (Table 1). None of the studies was considered to be seriously flawed. The analyses were rigorous, and the conclusions drawn by the studies were credible. However, most studies did not assess exposure prior to outcome measurement and might not have sufficient timeframe for outcomes to occur due to their cross-sectional design.

Table 1
Baseline characteristics of included studies

No	Author	Study design	Hospital	Town, Country	Period	Samples (n)	Male (%)	Age, y	Age difference	Outcome /No. of group	FIB (g/L) Mean \pm SD	FDP (μ g/ml) Mean \pm SD	Time of diagnosis	HTN (%)	CVD (%)	DM (%)	Study quality	
1	Zhang H, 2020 [20]	Retros.	Chongqing Public Health Medical Center	Chongqing, China	Feb 11-28, 2020	43 (14 vs 29)	35.7 vs 58.6	61.7 \pm 9.22 vs 44.34 \pm 15.84	$p < 0.001$	Severity/2 based on NHC China	4.70 \pm 1.98	n/a	On admission	7.1 vs 10.3	n/a	21.4 vs 10.3	Good	
2	Qian GQ, 2020 [11]	Retros.	Five hospitals in Zhejiang province	Zhejiang province, China	Jan 20-Feb 11, 2020	91 (9 vs 82)	n/a	66 (54-80) vs 49 (35,3-56)	$p < 0.001$	Severity/2 based on NHC China	3.50 \pm 1.35 vs 3.89 \pm 0.38	n/a	On admission	n/a	n/a	n/a	Good	
3	Chen X, 2020 [21]	Retros.	Hospital of Changsha and Loudi Central Hospital	Hunan, China	Jan 23-Feb 14, 2020	58 (12 vs 46)	54 vs 48.9	58.83 \pm 18.31 vs 42.46 \pm 15.55	$p = 0.001$	Severity/3 based on NHC China	4.59 \pm 1.07 vs 4.37 \pm 1.11	n/a	On admission	38 vs 8.3	7 vs 2.9	14 vs 6.2	Fair	
4	Zhu Z, 2020 [12]	Retros.	Hwa Mei Hospital	Zhejiang province, China	Jan 23-Feb 20, 2020	127 (16 vs 111)	56.25 vs 65.77	57.50 \pm 11.70 vs 49.95 \pm 15.52	$p = 0.03$	Severity/2 based on NHC China	5.49 \pm 2.14 vs 4.45 \pm 1.4	n/a	n/a	50 vs 20.72	12.5 vs 3.6	0 vs 9.01	Good	
5	Giannellos-Bourboulis E, 2020 [13]	Pros	Sotiria Athens General Hospital and Atrikon University General Hospital	Athens, Greece	March 3-30, 2020	54 (28 vs 26)	89.3 vs 57.5	67.8 \pm 10.8 vs 59.2 \pm 10.3	$p < 0.001$	Severity (severe respiratory failure)/2	6.94 \pm 1.89 vs 5.29 \pm 1.53	n/a	n/a	n/a	17.9 vs 7.7 (CAD)	21.4 vs 15.4	Fair	
6	Zheng C, 2020 [14]	Retros.	Wuhan Union Hospital	Wuhan, China	Feb 15, 2020	55 (21 vs 34)	38.1 vs 47.1	62(29-91) vs 59(29-77)	$p = 0.37$	Severity/2	5.5 \pm 1.27 vs 3.73 \pm 0.79	6.25 \pm 4.55 vs 4.73 \pm 3.39	n/a	n/a	n/a	n/a	n/a	Good
7	Sun Y, 2020 [15]	Retros.	Chinese PLA General Hospital	Beijing, China	n/a	63 (19 vs 44)	52.8 vs 70.15	42.25 \pm 17.49 vs 59.36 \pm 15.58	$p = 0.000$	Severity/4 based on NHC China	3.66 \pm 1.76 vs 2.94 \pm 1.01	n/a	On admission	21.1 vs 18.2	10.5 vs 0 (cardiac arrhythmia)	15.8 vs 4.5	Good	
8	Zeng L, 2020 [4, 5, 22]	Retros.	Third People's Hospital of Shenzhen	Shenzhen, China	Jan 11-Feb 29, 2020	284 with FIB (64 vs 220)	61.8 vs 43.9	58.7 \pm 11 vs 46.1 \pm 14.1	$p < 0.001$	Severity/2 based on NHC China	4.5 \pm 1 vs 3.9 \pm 1.1	n/a	On admission	27.6 vs 11.5	34.2 vs 12.6	17.1 vs 4.6	Good	

Table 1
Continued

No	Author	Study design	Hospital	Town, Country	Period	Samples (n)	Male (%)	Age, y	Age difference	Outcome /No. of group	FIB (g/L) Mean ± SD	FDP (µg/ml) Mean ± SD	Time of diagnosis	HTN (%)	CVD (%)	DM (%)	Study quality
9	Han H, 2020 [10]	Pros.	Renmin Hospital of Wuhan University	Wuhan, China	Jan 11–Feb 10, 2020	94 (45 vs 49)	n/a	n/a	n/a	Severity/3 based on NHC China	4.94 ± 1.87 vs 5.1 ± 1.16	62.04 ± 112.28 vs 7.92 ± 11.38	n/a	n/a	n/a	n/a	Fair
10	Han Y, 2020 [23]	Retros.	Renmin Hospital of Wuhan University	Wuhan, China	Feb 1–18, 2020	47 (24 vs 23)	70.83 vs 39.13	65.08 (31–87) vs 64.74 (41–81)	p=0.926	Severity/2 based on ATS	5.19 ± 0.41 vs 4.43 ± 0.67	n/a	On admission	41.67 vs 34.78	16.67 vs 4.35	16.67 vs 13.04	Good
11	Shi P, 2020 [19]	Retros.	Xi'an, Ankang, Baoji, Hanzhong, Shangluo, Yan'an, Weinan, Xi'an, Yang, Tongchuan Hospital	Shaanxi, China	Jan 23–March 7, 2020	134 (46 vs 88)	54.3 vs 45.5	56(46–66) vs 41(29–50)	p<0.000	Severity/2 based on NHC China	3.5 ± 0.38 vs 3.15 ± 0.31	n/a	On admission	21.7 vs 11.4	8.7 vs 2.3	8.7 vs 5.7	Good
12	Gao Y, 2020 [16]	Retros.	Fuyang Second People's Hospital	Fuyang, China	Jan 23–Feb 2, 2020	43 (15 vs 28)	60 vs 60.7	45.20 ± 7.68 vs 42.96 ± 14.00	p=0.503	Severity/2	3.84 ± 1.00 vs 3.11 ± 0.83	n/a	n/a	40.00 vs 25.00	6.67 vs 8.00	40.00 vs 3.57	Good
13	Tang N, 2020 [2]	Retros.	Tongji Hospital	Wuhan, China	Jan 1–Feb 3, 2020	183 (21 vs 162)	76.19 vs 50.61	64.0 ± 20.7 vs 52.4 ± 15.6	p<0.001	Mortality/2	4.94 ± 0.36 vs 4.44 ± 0.27	10.65 ± 3.59 vs 4.08 ± 0.06	On admission	n/a	n/a	n/a	Good
14	Zhang F, 2020 [24]	Retros.	Wuhan No.1 Hospital	Wuhan, China	Dec 25 2019–Feb 15 2020	48 (17 vs 31)	70.6 vs 67.7	78.65 ± 8.31 vs 66.16 ± 13.66	p=0.001	Mortality/2	4.40 ± 1.48 vs 4.66 ± 1.49	n/a	On admission	70.6 vs 64.5	23.5 vs 29.0	29.4 vs 16.1	Good
15	Hu C, 2020 [25]	Retros.	Sino-French New City Branch of Tongji Hospital	Wuhan, China	28 Jan 2020–11 March 2020	183 (68 vs 115)	73.53 vs 49.57	68.44 ± 9.94 vs 60.54 ± 13.19	p<0.001	Mortality/2	5.38 ± 2.04 vs 4.50 ± 1.44	n/a	On admission	44.12 vs 37.39	n/a	20.59 vs 18.26	Good
16	Yan Y, 2020 [17]	Retros.	Tongji Hospital	Wuhan, China	10 Jan 2020–24 Feb 2020	48 (39 vs 9)	76.9 vs 33.3	70.5 ± 10 vs 64.7 ± 7.3	p=0.112	Mortality/2	5.08 ± 2.50 vs 4.80 ± 1.38	n/a	On admission	52.8 vs 18.8	25 vs 4.7	36.1 vs 10.6	Good
17	Zheng Y, 2020 [18]	Retros.	Chengdu Public Health Clinical Medical Center	Chengdu, China	16 Jan 2020–20 Feb 2020	99 (31 vs 68)	19.19 vs 32.32	63.8 ± 16.51 vs 42.5 ± 15.51	p<0.001	Critically ill/2	n/a	6.72 ± 8.36 vs 2.65 ± 2.33	On admission	n/a	n/a	n/a	Fair

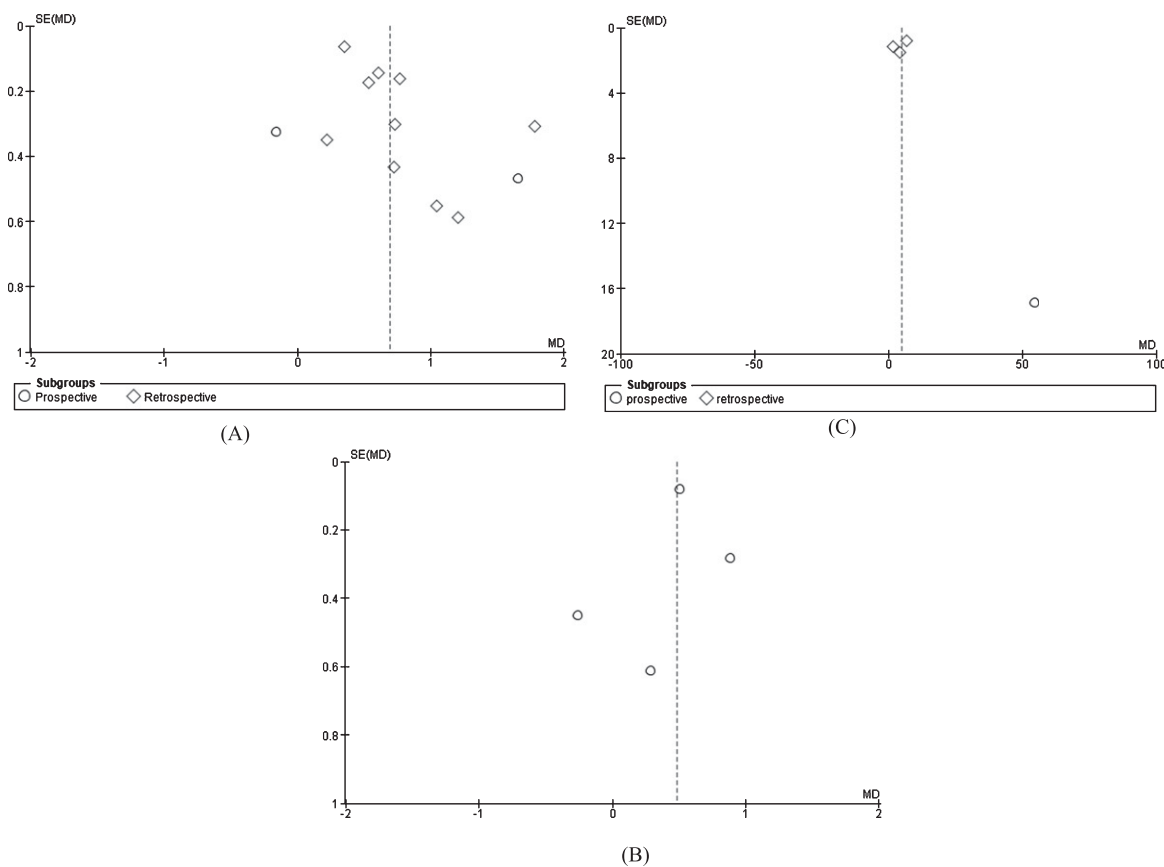


Fig. 2. Funnel plot shows no publication bias for (A) fibrinogen and severity [$p=0.154$], but there are publication biases for (B) fibrinogen and mortality, and (C) fibrin degradation product and composite poor outcomes in patients with COVID-19.

The Egger's test showed there was no publication bias for fibrinogen in severity outcome ($p=0.154$). We did not conduct Egger's test for other outcomes because there were less than ten included studies. Figure 2 shows that all funnel plots showed an asymmetrical appearance indicating publication bias in fibrinogen for mortality outcome and FDP for composite poor outcomes.

Random-effects meta-analysis revealed a higher mean of fibrinogen level on admission in patients with severe case compared to those with non-severe case as shown in Fig. 3A (12 studies, MD = 0.69, [95% CI: 0.44 to 0.94], $p < 0.05$; I² = 72%, $p < 0.05$). Subgroup analysis based on study design showed no difference result in prospective design subgroup. Sensitivity analysis using leave-one-out method showed that removal of Shi et al. [19]. reduced the heterogeneity with similar result (MD = 0.75, [95% CI: 0.47 to 1.04], $p < 0.05$; I² = 64%, $p < 0.05$).

Non-survivor group had a pooled higher mean difference of fibrinogen level on admission than survivor group as shown in Fig. 3B (4 studies, MD = 0.48 [95% CI: 0.13 to 0.83], $p < 0.05$; I² = 38%, $p = 0.18$). There was no substantial heterogeneity found across the studies. We did not perform subgroup analysis based on study design because all included studies were retrospective observational.

Higher FDP on admission was found in poor outcome (composite of severity, critically ill, and mortality) compared to good outcome as shown in Fig. 3C (4 studies, MD = 4.84 [95% CI: 0.75 to 8.93], $p < 0.05$; I² = 86%, $p < 0.05$). Subgroup analysis of retrospective design showed similar results. Sensitivity analysis showed that removal of Zheng et al. [14]. reduced the heterogeneity with similar result (MD = 6.49, [95% CI: 1.45 to 11.53], $p < 0.05$; I² = 81%, $p < 0.05$).

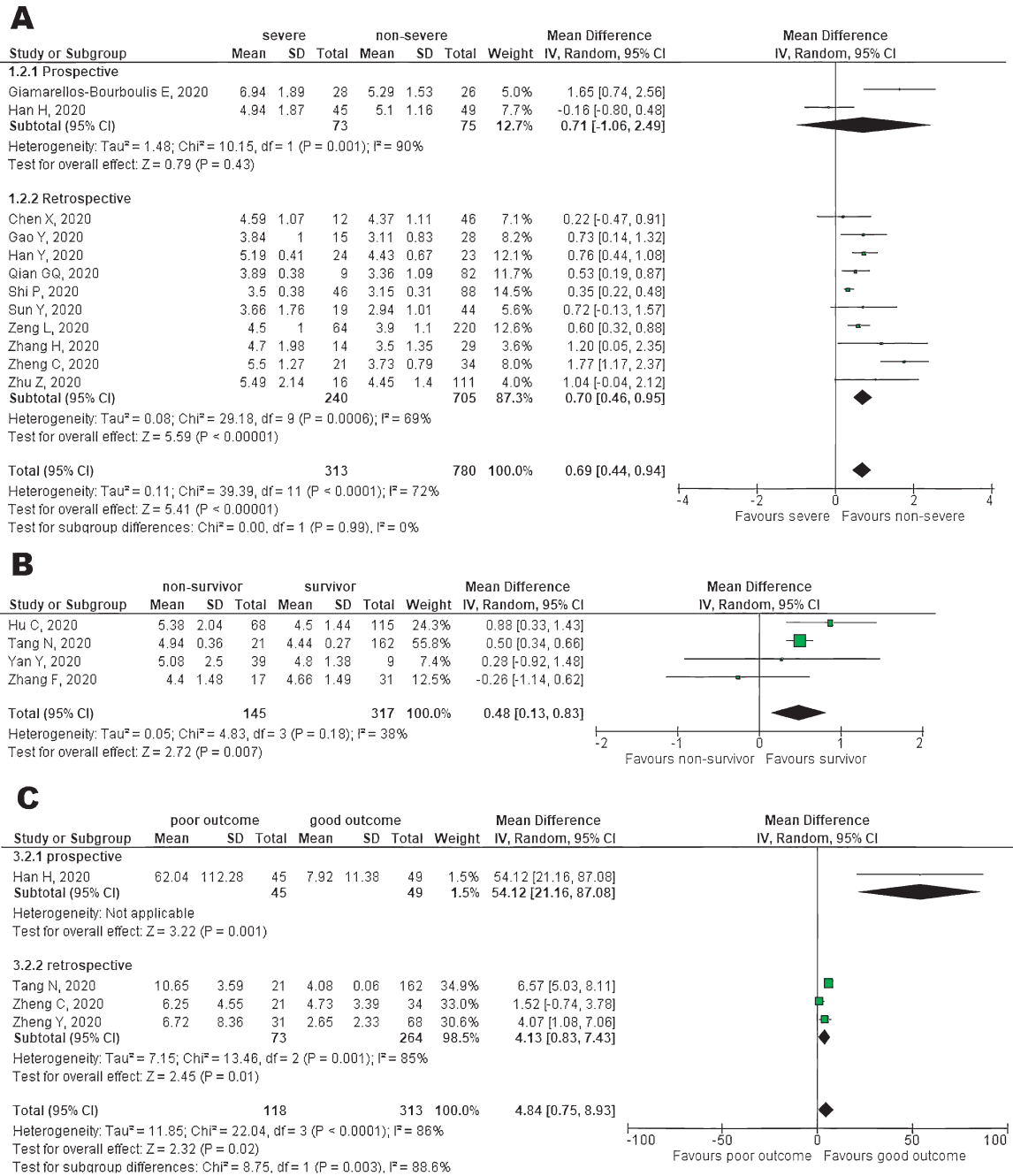


Fig. 3. (A) Forest plot of fibrinogen for severity; (B) Forest plot of fibrinogen for mortality; (C) Forest plot of fibrinogen degradation product for poor outcome.

4. Discussion

This meta-analysis showed that high fibrinogen levels on admission were significantly associated with severity and mortality. In addition, elevated FDP was significantly associated with composite poor outcome. Our results are in line with previous studies about the association between poor prognosis

of COVID-19 and coagulation profile as appeared in early reports from China [3].

One study by Tang et al. reported that non-survivors had higher fibrinogen and FDP level than survivors on early stage of disease. In the late course of the disease, non-survivors had a significantly lower level of fibrinogen than survivors [2]. Another study reported that COVID-19 patient had high level of fibrinogen while DIC patient had low fibrinogen level [26].

The normal plasma concentration of fibrinogen is between 2 and 4 g/l; however, this concentration can rapidly increase under pathological conditions such as injury, infection, or inflammation [27]. Viral infections may induce severe complications such as acute respiratory distress syndrome and multi-organ failure which are often accompanied by hypercoagulation and DIC [28, 29]. The laboratory features of DIC vary widely depending on the stage encountered. In early DIC, there is compensated activation of the hemostatic system, however with progression to decompensated hemostatic activation, characteristic findings are observed. Fibrinogen levels vary; however, in advanced stages of DIC, fibrinogen levels decrease [26]. The exact mechanism for coagulopathy in COVID-19 is not yet identified. COVID-19 is able to directly attack vascular endothelial cells expressing high levels of ACE2, leading to abnormal coagulation and sepsis. The virus enters endothelial cells by endocytosis via the binding of its spike glycoprotein to a cellular receptor which facilitates viral attachment to the surface of target cells [30, 31].

The prevalence of VTE, particularly in critically ill/severe patients suffering from COVID-19, was reported as much as 25–27% [32]. VTE is often associated with plasma hypercoagulability. An elevated plasma fibrinogen level significantly increases the risk of VTE. These findings suggest hyperfibrinogenemia is not merely a biomarker of thrombotic risk, but is causative in the etiology of venous thrombosis [33].

Hyperfibrinolysis was present in 97% of COVID-19 patients [34]. Fibrin and FDP are formed during intravascular clotting [35]. A study observed an increase of activated plasmin and fibrinolytic activity in COVID-19 patients which resulted in the elevated FDP [36]. At late stages of COVID-19, FDP were reported to be moderately or markedly elevated in all COVID-19 deaths [37].

Lung computed tomography (CT) scan shows an important role in the detection of thromboembolic events in COVID-19. Abdominal microcirculatory disorders, as well as central or peripheral pulmonary embolism was also found in severe cases of COVID-19. As the disease worsened, the laboratory parameter of fibrinogen was increased to some varying degree, and multiple lesions in CT scan were progressively noticed [38, 39]. Imaging modality which is greatly beneficial in detecting thrombotic events occurrence in these cases in addition to lung CT scan, is contrast-enhanced ultrasound (CEUS). Peripherally accentuated consolidation with irregular hyperemia was found in the CEUS and also in the CT examination in cases of pulmonary thrombus embolism [40]. CEUS can dynamically record the mesenteric arterial and venous blood flow, thus enabling us to quickly rule out abdominal infarction [41].

Our meta-analysis suggests that elevated fibrinogen on admission can also be a marker of poor prognosis in patients with COVID-19. During a pandemic, risk stratification in triage is necessary, and fibrinogen levels can be one of potential indicators of high-risk patients. While D-dimer level is often used to aid the decision of starting an anticoagulant, fibrinogen level might direct the physician to stop anticoagulation. It should be noted that, like all cases of DIC, patients may progress to a hypercoagulable state when fibrinogen levels begin to decrease. At this point, stopping anticoagulation should be considered.

To the best of authors knowledge, our meta-analysis comprising of 17 studies is the largest meta-analysis evaluating the prognostic role of fibrinogen on admission in COVID-19. However, several limitations should be noted in our study. First, there was substantial heterogeneity across studies. Most of included studies were retrospective with a relatively small sample size. Second, the presence of publication bias. The analysis of this study was performed during pandemic; many areas affected by

COVID-19 have not published the data yet. Most of the studies included were from mainland China. The ethnic and geographical differences might distort the results.

5. Conclusions

Our meta-analysis demonstrated that elevated fibrinogen and fibrin degradation products on admission were associated with an increased risk of poor outcome in COVID-19 patients.

Data availability

The data supporting this meta-analysis are from previously reported studies and datasets, which have been cited.

Conflict of interest

The authors declare that the research was conducted in the absence of any commercial or financial relationships that could be considered as a potential conflict of interests.

Acknowledgments

This work did not receive specific funding, but was performed as part of Johannes Nugroho employment at the Department of Cardiology and Vascular Medicine, Universitas Airlangga/Dr. Soetomo General Hospital, East Java, Indonesia.

References

- [1] Giannis D, Ziogas IA, Gianni P. Coagulation disorders in coronavirus infected patients: COVID-19, SARS-CoV-1, MERS-CoV and lessons from the past 2020. *J Clin Virol.* 2020;127:104362.
- [2] Tang N, Li D, Wang X, Sun Z. Abnormal coagulation parameters are associated with poor prognosis in patients with novel coronavirus pneumonia. *J Thromb Haemost.* 2020;18:844-7.
- [3] Sakka M, Connors JM, Hékimian G, Martin-Toutain I, Crichton B, Colmegna I, et al. Association between D-Dimer levels and mortality in patients with coronavirus disease 2019 (COVID-19): a systematic review and pooled analysis. *JMV-Journal Médecine Vasc.* 2020;2019:1-7.
- [4] Chen G, Zhao J, Ning Q, Cao Y, Huang D, Wang H, et al. Clinical and immunological features of severe and moderate coronavirus disease 2019. *J Clin Invest.* 2020;130(5):2620-9.
- [5] Hutton B, Salanti G, Caldwell DM, Chaimani A, Schmid CH, Cameron C, et al. The PRISMA extension statement for reporting of systematic reviews incorporating network meta-analyses of health care interventions: Checklist and explanations. *Ann Intern Med* 2015;162:777-84
- [6] Higgins J, Thomas J, Chandler J, Cumpston M, Li T, Page M, et al. *Cochrane Handbook for Systematic Reviews of Interventions* version 6.0 (updated July 2019). Cochrane 2019. <https://training.cochrane.org/handbook>. (accessed May 20, 2020).
- [7] National Institute of Health. Study Quality Assessment Tools | National Heart, Lung, and Blood Institute (NHLBI) n.d. <https://www.nhlbi.nih.gov/health-topics/study-quality-assessment-tools>. (accessed May 20, 2020).
- [8] Egger M, Smith GD, Schneider M, Minder C. Bias in meta-analysis detected by a simple, graphical test measures of funnel plot asymmetry. *Bmj.* 1997;315:629-34
- [9] Wan X, Wang W, Liu J, Tong T. Estimating the sample mean and standard deviation from the sample size, median, range and/or interquartile range. *BMC Med Res Methodol.* 2014;14:1-13.

- [10] Han H, Yang L, Liu R, Liu F, Wu KL, Li J, et al. Prominent changes in blood coagulation of patients with SARS-CoV-2 infection. *Clin Chem Lab Med*. 2020;58:1116-20.
- [11] Qian G-Q, Yang N-B, Ding F, Ma AHY, Wang Z, Shen Y, et al. Epidemiologic and clinical characteristics of 91 hospitalized patients with COVID-19 in Zhejiang, China: A retrospective, multi-centre case series [published online ahead of print, 2020 Mar 17]. *QJM*. 2020;hcaa089. doi:10.1093/qjmed/hcaa089
- [12] Zhu Z, Cai T, Fan L, Lou K, Hua X, Huang Z, et al. Clinical value of immune-inflammatory parameters to assess the severity of coronavirus disease 2019. *Int J Infect Dis*. 2020;95:332-9.
- [13] Giamarellos-Bourboulis EJ, Netea MG, Rovina N, Akinosoglou K, Antoniadou A, Antonakos N, et al. Complex immune dysregulation in COVID-19 patients with severe respiratory failure. *Cell Host Microbe*. 2020;27:992-1000.e3.
- [14] Zheng C, Wang J, Guo H, Lu Z, Ma Y, Zhu Y, et al. Risk-adapted treatment strategy for COVID-19 patients. *Int J Infect Dis*. 2020;94:74-7.
- [15] Sun Y, Dong Y, Wang L, Xie H, Li B, Chang C, et al. Characteristics and prognostic factors of disease severity in patients with COVID-19: The Beijing experience. *J Autoimmun*. 2020:102473. <https://doi.org/10.1016/j.jaut.2020.102473>.
- [16] Gao Y, Li T, Han M, Li X, Wu D, Xu Y, et al. Diagnostic utility of clinical laboratory data determinations for patients with the severe COVID-19. *J Med Virol*. 2020;92:791-6.
- [17] Yan Y, Yang Y, Wang F, Ren H, Zhang S, Shi X, et al. Clinical characteristics and outcomes of patients with severe covid-19 with diabetes. *BMJ Open Diabetes Res Care*. 2020;8:e001343.
- [18] Zheng Y, Xu H, Yang M, Zeng Y, Chen H, Liu R, et al. Epidemiological characteristics and clinical features of 32 critical and 67 noncritical cases of COVID-19 in Chengdu. *J Clin Virol*. 2020;127:104366.
- [19] Shi P, Ren G, Yang J, Li Z, Deng S, Li M, et al. Clinical characteristics of imported and second-generation COVID-19 cases outside Wuhan, China: A multicenter retrospective study. *medRxiv*. 2020;2020.04.19.20071472. doi:10.1101/2020.04.19.20071472.
- [20] Zhang H, Wang X, Fu Z, Luo M, Zhang Z, Zhang K, et al. Potential factors for prediction of disease severity of COVID-19 patients. *medRxiv*. 2020;2020.03.20.20039818. doi:10.1101/2020.03.20.20039818.
- [21] Chen X, Zheng F, Qing Y, Ding S, Yang D, Lei C, et al. Epidemiological and clinical features of 291 cases with coronavirus disease 2019 in areas adjacent to Hubei, China: a double-center observational study. *medRxiv*. 2020;2020.03.03.20030353. doi:10.1101/2020.03.03.20030353
- [22] Zeng L, Li J, Liao M, Hua R, Huang P, Zhang M, et al. Risk assessment of progression to severe conditions for patients with COVID-19 pneumonia: a single-center retrospective study. *medRxiv*. 2020;2020.03.25.20043166. doi:10.1101/2020.03.25.20043166
- [23] Han Y, Zhang H, Mu S, Wei W, Jin C, Xue Y, et al. Lactate dehydrogenase, a Risk Factor of Severe COVID-19 Patients. *medRxiv*. 2020;2020.03.24.20040162. doi:10.1101/2020.03.24.20040162
- [24] Zhang F, Yang D, Li J, Gao P, Chen T, Cheng Z, et al. Myocardial injury is associated with in-hospital mortality of confirmed or suspected COVID-19 in Wuhan, China: A single center retrospective cohort study. *medRxiv*. 2020;2020.03.21.20040121. doi:10.1101/2020.03.21.20040121
- [25] Hu C, Liu Z, Jiang Y, Zhang X, Shi O, Xu K, et al. Early prediction of mortality risk among severe COVID-19 patients using machine learning. *medRxiv*. 2020;2020.04.13.20064329. doi:10.1101/2020.04.13.20064329
- [26] Becker RC. COVID-19 update: Covid-19-associated coagulopathy. *J Thromb Thrombolysis*. 2020;50(1):54-67.
- [27] Göbel K, Eichler S, Wiendl H, Chavakis T, Kleinschnitz C, Meuth SG. The coagulation factors fibrinogen, thrombin, and factor XII in inflammatory disorders-a systematic review. *Front Immunol*. 2018;9:1731.
- [28] Di Micco P, Russo V, Carannante N, Imperato M, Rodolfi S, Cardillo G, et al. Clotting factors in COVID-19: Epidemiological association and prognostic values in different clinical presentations in an Italian cohort. *J Clin Med*. 2020;9:1371.
- [29] Sardu C, Gambardella J, Morelli MB, Wang X, Marfella R, Santulli G. Is COVID-19 an endothelial disease? clinical and basic evidence. *Clin Basic Evid*. 2020;9:1-26.
- [30] Levy M, van der Poll T. Coagulation and sepsis. *Thromb Res*. 2017;149:38-44.
- [31] Jung F, Krüger-Genge A, Franke RP, Hufert F, Küpper JH. COVID-19 and the endothelium. *Clin Hemorheol Microcirc*. 2020;75:7-11.
- [32] Klok FA, Kruip MJHA, van der Meer NJM, Arbous MS, Gommers DAMPJ, Kant KM, et al. Incidence of thrombotic complications in critically ill ICU patients with COVID-19. *Thromb Res*. 2020;191:145-7.
- [33] Machlus KR, Cardenas JC, Church FC, Wolberg AS. Causal relationship between hyperfibrinogenemia, thrombosis, and resistance to thrombolysis in mice. *Blood*. 2011;117(18):4953-63
- [34] Zhang B, Zhou X, Qiu Y, Song Y, Feng F, Feng J, et al. Clinical characteristics of 82 cases of death from COVID-19. *PLoS ONE*. 2020;15(7):e0235458
- [35] Hemker HC, Fekkes N, Hensen A, Schrijver H, Loeliger EA. Quantitation of circulating fibrinogen breakdown products in intravascular clotting. *Thromb Diath Haemorrh Suppl*. 1966;20:227-34.

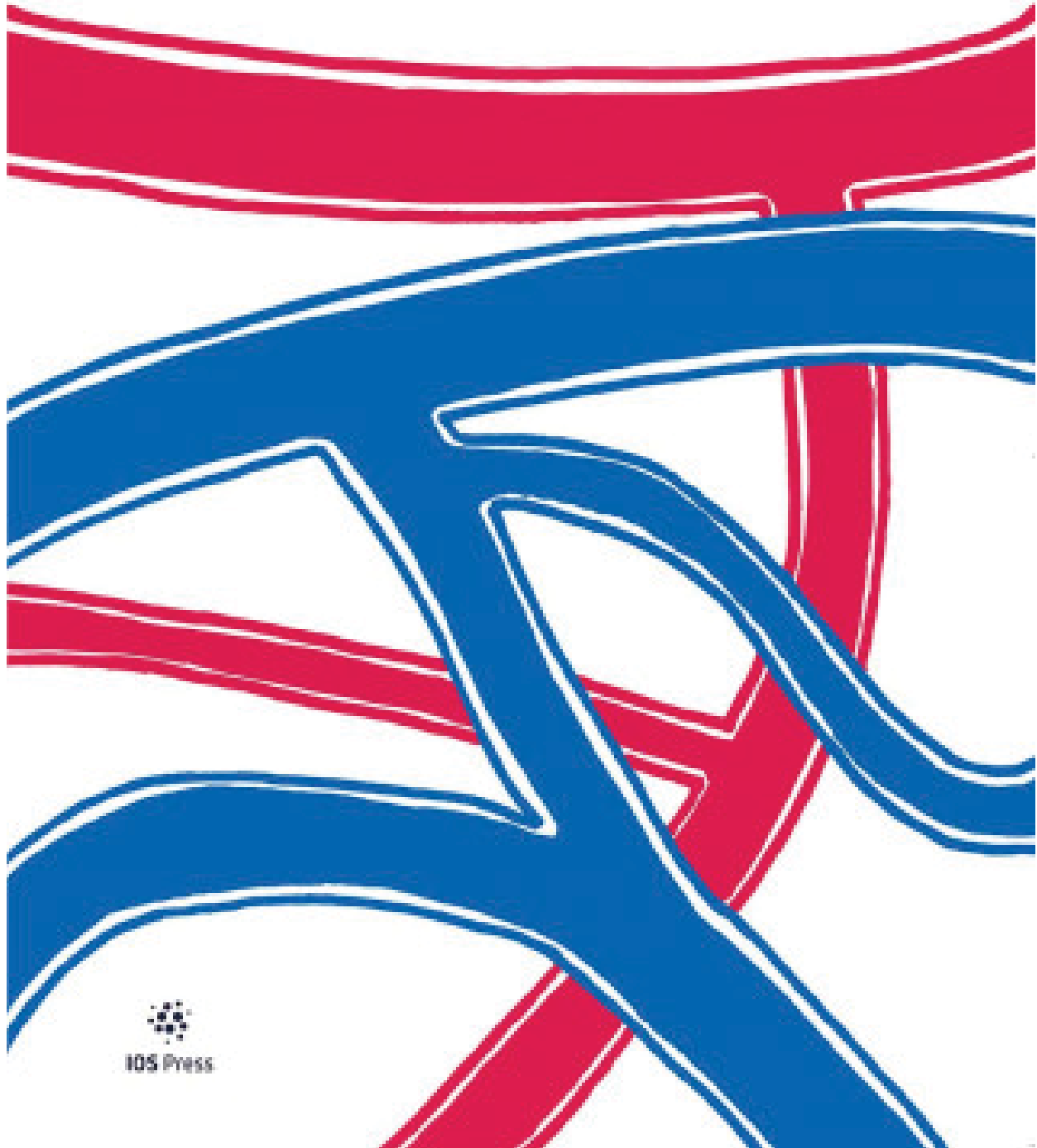
- [36] Ji H-L, Zhao R, Matalon S, Matthay MA. Elevated plasmin(ogen) as a common risk factor for COVID-19 susceptibility. *Physiol Rev.* 2020;100(3):1065-75.
- [37] Ponti G, Maccaferri M, Ruini C, Tomasi A, Ozben T. Biomarkers associated with COVID-19 disease progression. *Crit Rev Clin Lab Sci.* 2020;0(0):1-11.
- [38] Jiang X, Yin Z, Wang T, Zhai N, Lu F, Zhan C, et al. Covid-19 dynamic computed tomography (CT) performance and observation of some laboratory indicators. *Med Sci Monit.* 2020;26:1-7
- [39] Li M, Lei P, Zeng B, et al. Coronavirus Disease (COVID-19): Spectrum of CT Findings and Temporal Progression of the Disease. *Academic Radiology.* 2020;27:603-8
- [40] Jung EM, Stroszczyński C, Jung F. Contrast enhanced ultrasound (CEUS) to assess pleural pulmonary changes in severe COVID-19 infection: First results. *Clin Hemorheol Microcirc.* 2020;75(1):19-26.
- [41] Jung EM, Stroszczyński C, Jung F. Contrast enhanced ultrasonography (CEUS) to detect abdominal microcirculatory disorders in severe cases of COVID-19 infection: First experience. *Clin Hemorheol Microcirc.* 2020;74(4):353-61.

ISSN 1386-0201

CLINICAL HEMORHEOLOGY AND MICROCIRCULATION

BLOOD FLOW, VESSELS AND IMAGING

EDITORS-IN-CHIEF: FRIEDRICH JUNG AND LUKAS PRANTL




IOS Press



Clinical Hemorheology and Microcirculation

Blood Flow, Vessels and Imaging

Impact Factor 2021 **2.375**

Volume

80-82, 12 issues

Latest issue

80:4 online 08 April 2022

Next issue

81:1 scheduled for May 2022

Back volumes

From volume 1, 1981

ISSN print

1386-0291

ISSN online

1875-8622

Subjects

Natural Sciences,

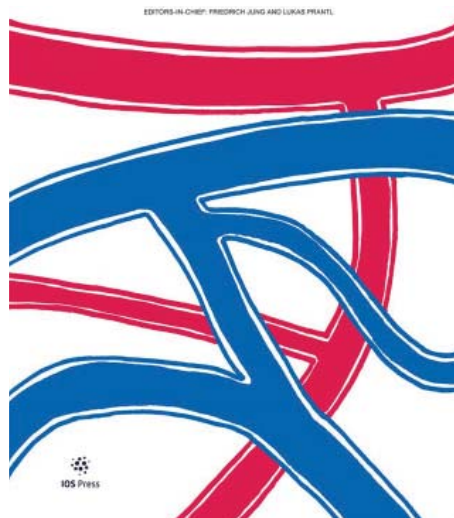
Medicine & Health,

Medicine,

Life Sciences

ISSN 1386-0291

**CLINICAL HEMORHEOLOGY
AND MICROCIRCULATION**
BLOOD FLOW, VESSELS AND IMAGING



€1604.00 / US\$1937.00 Institutional online subscription for 2022

► [SHOW ALL PRICES](#)

[View Content](#)

[Subscribe to Print](#)

[i MORE INFO ABOUT PRICING](#)

[👍 RECOMMEND THIS TITLE TO LIBRARIAN](#)

[✉ SIGN UP FOR NEWS](#)

[Aims & Scope](#)

[Editorial Board](#)

[Author Guidelines](#)

[Abstracted/Indexed in](#)

[Open Access](#)

[Peer Review](#)

Editorial Board

Editors-in-Chief

F. JUNG
Brandenburg University of Technology
Institute of Biotechnology, Molecular Cell Biology
Senftenberg
Germany

Email: friedrich.jung@b-TU.de

L. PRANTL
Department of Plastic, Hand and Reconstructive Surgery
University Hospital Regensburg
Germany
Email: Lukas.prantl@ukr.de

Co-Editors

G. CAIMI
Università degli Studi di Palermo
Italy

P. CONNES
Université Claude Bernard Lyon
France

S. LEE
Catholic Kwandong University
South Korea

Ch. LEHMANN
Dalhousie University, Halifax
Canada

Founding Editors

A.L. COPLEY
S. WITTE

Honorary Editors-in-Chief

S. FORCONI
H. NIIMI
J.-F. STOLTZ

Honorary Members

S. CHIEN
T. DI PERRI, A.M.
EHRLY
H. SCHMID-SCHÖNBEIN

Section Editors

Angiology

B. AMANN-VESTI

University Hospital Zürich
Switzerland

M.R. BOISSEAU
Bordeaux University
France

R. KOPPENSTEINER
Medical University Vienna
Austria

R. MARTINI
University of Padova
Italy

C. THALHAMMER
University Inselhospital Bern
Switzerland

Animal studies

B. HIEBL
University of Veterinary Medicine Hannover
Germany

N. NEMETH
University of Debrecen
Hungary

U. WINDBERGER
Medical University of Vienna
Austria

F.Y. ZHUANG
China-Japan Friendship Institute of Clinical Medical Sciences
Beijing, China

Biomedical Engineering

F. BASSETTO
University of Padua
Italy

F. LIAO
National Center for Nanoscience and Technology
Beijing, China

P. MENU
Université de Lorraine

UNIVERSITÉ DE LORRAINE
Nancy, France

G.W. SCHMID-SCHÖNBEIN
University of California
San Diego, USA

J. SEKI
University Osaka
Japan

M. SINGH
Indian Institute of Technology
Madras, India

P. VOGT
Medizinische Hochschule Hannover
Germany

Biophysics

N. ANTONOVA
Bulgarian Academy of Sciences
Sofia, Bulgaria

E. KALIVOTIS
Cyprus University of Technology
Limassol, Cyprus

A. KOUTSIARIS
Technological Educational Institute of Thessaly
Larisa, Greece

R.N. PITTMAN
Virginia Commonwealth University
Richmond, USA

Blood Rheology

J.F. BRUN
Université de Montpellier
France

Y. ISOGAI
Toyama Prefectural University
Japan

H.J. MEISELMAN
University of Southern California

Los Angeles, USA

A. SILVA HERDADE
University of Lisbon
Lisbon, Portugal

Cardiology

C. JUNG
University Düsseldorf
Germany

J.-W PARK
Charité
Berlin, Germany / South-Korea

J.D. PARKER
Sinai Health System University of Toronto
Canada

K. TOTH
University of Pecs
Hungary

Clinical Imaging

Y. CHEN
Shanghai Jiaotong University School of Medicine
China

J.P. HONG
University of Ulsan
South Korea

E.M. JUNG
University of Regensburg
Germany

C. STROSZCZYNSKI
University of Regensburg
Germany

M. WALDNER
University of Erlangen
Germany

H.-X. XU
Tongji University School of Medicine
Shanghai, China

Shanghai, China

D. YI
Fudan University
Shanghai, China

Clinical Microcirculation

V. CERNY
Charles University Prague
Czech Republic

A. COLANTUONI
'Federico II' University Medical School
Naples, Italy

M. ROSSI
University Hospital of Pisa
Italy

Clinical Studies

J. CHANG
Stanford University
USA

M. JÜNGER
University of Greifswald
Germany

A. MOMENI
Stanford University
USA

N. TANAHASHI
Tokyo
Japan

Haematology

S. BALLAS
Thomas Jefferson University
Philadelphia, USA

M.R. HARDEMAN
University of Amsterdam
Netherlands

Human Studies

Human Studies

R. HORCH
University of Erlangen
Germany

R. ROHRICH
University of Texas Southwestern
Dallas, USA

M. SIMMONDS
Griffith University
Gold Coast, Australia

Internal Medicine

M. BANERJEE
National Institutes of Health
Bethesda, USA

M. FORNAL
Jagiellonian University
Krakow, Poland

P. LACOLLEY
Broussais Hospital
Paris, France

F. LAGHI PASINI
Università degli Studi Siena
Italy

R.S. ROSENSON
Icahn School of Medicine at Mount Sinai
New York, USA

Microcirculation

E. BOUSKELA
University of Rio de Janeiro State
Brasil

H. LENASI
University of Ljubljana
Slovenia

H. LIPOWSKY
Penn State University
USA

R. XIU
Peking Union Medical College
China

Molecular Biology

J.-H. KUEPPER
Brandenburger-Technische Universität
Germany

J. PIETZSCH
Helmholtz-Zentrum Dresden-Rossendorf
Germany

Ö. YALCIN
Koc University
Istanbul, Turkey

Molecular Medicine

R. ALIS
Catholic University of Valencia
Spain

S. EGÉE
Université Sorbonne
Paris, France

C. SALDANHA
University of Lisbon
Portugal

J. ZHOU
University of Halifax
Canada

Oncology

F. FORCONI
University of Southampton
UK

B. WANG
Wuhan
China

Ophthalmology

W. TO
University of California
USA

S. WOLF
University of Bern
Switzerland

U. WOLF-SCHNURRBUSCH
University of Bern
Switzerland

Pharmacology

M.B. YERER-AYCAN
Kaisere
Turkey

B. RIQUELME
Rosario
Argentina

Physiology

G. NASH
University of Birmingham
UK

A. N. DIKMENOGLI-FALKMARKEN
Hacettepe University
Istanbul, Turkey

M. MANTSKAVA
Beritashvili Institute of Physiology
Tbilisi, Georgia

S. PATUMRAJ
Srinakharinwirot University
Bangkok, Thailand

Platelets:

S. AHMADIZAD
Shahid Beheshti University
Tehran, Iran

S. BRAUNE
Helmholtz Zentrum Geesthacht
Germany

Red Blood Cells

B. M. COOKE
James Cook University
Cairns, Australia

M. GRAU
Sporthochschule Köln
Germany

W. EL NEMER
Université Paris Diderot
France

M. RAMPLING
Imperial College
London, UK

J.-L. WAUTIER
Université Paris Diderot
France

Stem Cells and Regenerative Medicine

X. BAI
Medical College of Wisconsin
Milwaukee, USA

A. BLOCKI
The Chinese University of Hong Kong
Hong Kong

S. GEHMERT
University Clinic Basel
Switzerland

V. PAVLOV
Bashir State University
Ufa, Russia

M. RODRIGUES
Stanford University
USA

Trans- and Re-plantation

E. GEISLER

University of Regensburg
Germany

R. GIUNTA
LMU München
Germany

Vascular Biology

T. GORI
University of Mainz, Germany
University of Siena, Italy

M. KLONIZAKIS
Sheffield Hallam University
Sheffield, UK

A. KRÜGER-GENGE
Fraunhofer Institute for Applied Polymer Research
Potsdam, Germany

Vascular Pathology

A. CHEUNG
University of California
Sacramento, USA

R.P. FRANKE
University of Ulm
Germany

R. KLOPFLEISCH
Freie Universität Berlin
Germany

Wound Healing

C.E. BUTLER
The University of Texas MD Anderson Cancer Center
Austin, USA

G. GURTNER
Stanford University
USA

B. KUEHLMANN
Stanford University
USA

M. LONGAKER
Stanford University
USA

S. SCHREML
University of Regensburg
Germany

D. WAN
Stanford University
USA

Latest Articles

Discover the contents of the latest journal issue:

Incidental nonfunctioning pancreatic neuroendocrine tumors: Contrast enhanced ultrasound features in diagnosis¹

Dansong Wang, Daohui Yang, Yijie Qiu, Xiaofan Tian, Dan Zuo, Yi Dong, Wenhui Lou, Wenping Wang

Silibinin augments the effect of clopidogrel on atherosclerosis in diabetic ApoE deficiency mice

Qiyu Shi, Jianbo Zhang, Yamin Hu, Xiaohong Li

Monitoring free flaps and replanted digits via perfusion index – A proof of concept study

Alexandra Anker, Catharina Strauss, Silvan Klein, Robert Kemper, Vanessa Brebant, Lukas Prantl, Sebastian Geis

Parameters of cutaneous microvasculature in men of working age with newly diagnosed arterial hypertension

A.A. Fedorovich, A.I. Korolev, A.Yu. Gorshkov, V.A. Dadaeva, O.T. Kim, K.V. Omelyanenko, M.A. Mikhaylova, D.K. Vasilyev, O.N. Dzhioeva, D.U. Akasheva, O.M. Drapkina

Comparison of skin sensitivity following breast reconstruction with three different techniques: Autologous fat grafting, DIEP flap and expander/implant¹

Andreas Eigenberger, Norbert Heine, Vanessa Brebant, Vanessa Hoesl, Eva Brix, Lukas Prantl, Sally Kempa

Access Full Issue

Clinical Hemorheology and Microcirculation - Volume 77, issue 2

Purchase individual online access for 1 year to this journal. **Price: EUR 185.00**



Impact Factor 2021: 2.375

Clinical Hemorheology and Microcirculation, a peer-reviewed international scientific journal, serves as an aid to understanding the flow properties of blood and the relationship to normal and abnormal physiology. The rapidly expanding science of hemorheology concerns blood, its components and the blood vessels with which blood interacts. It includes perihemorheology, i.e., the rheology of fluid and structures in the perivascular and interstitial spaces as well as the lymphatic system. The clinical aspects include pathogenesis, symptomatology and diagnostic methods, and the fields of prophylaxis and therapy in all branches of medicine and surgery, pharmacology and drug research.

The endeavour of the Editors-in-Chief and publishers of *Clinical Hemorheology and Microcirculation* is to bring together contributions from those working in various fields related to blood flow all over the world. The editors of *Clinical Hemorheology and Microcirculation* are from those countries in Europe, Asia, Australia and America where appreciable work in clinical hemorheology and microcirculation is being carried out. Each editor takes responsibility to decide on the acceptance of a manuscript. He is required to have the manuscript appraised by two referees and may be one of them himself. The executive editorial office, to which the manuscripts have been submitted, is responsible for rapid handling of the reviewing process.

Clinical Hemorheology and Microcirculation accepts original papers, brief communications, mini-reports and letters to the Editors-in-Chief. Review articles, providing general views and new insights into related subjects, are regularly invited by the Editors-in-Chief. Proceedings of international and national conferences on clinical hemorheology (in original form or as abstracts) complete the range of editorial features.

The following professionals and institutions will benefit most from subscribing to *Clinical Hemorheology and Microcirculation*: medical practitioners in all fields including hematology, cardiology, geriatrics, angiology, surgery, obstetrics and gynecology, ophthalmology, otology, and neurology. Pharmacologists, clinical laboratories, blood transfusion centres, manufacturing firms producing diagnostic instruments, and the pharmaceutical industry will also benefit.

Important new topics will increasingly claim more pages of *Clinical Hemorheology and Microcirculation*: the role of hemorheological and microcirculatory disturbances for epidemiology and prognosis, in particular regarding cardiovascular disorders, as well as its significance in the field of geriatrics. Authors and readers are invited to contact the editors for specific information or to make suggestions.

Show: 10 results per page

Mark all

- [The diagnostic performance of shear wave velocity ratio for the differential diagnosis of benign and malignant breast lesions: Compared with VTQ, and mammography](https://content.iospress.com:443/articles/clinical-hemorheology-and-microcirculation/ch200813) (<https://content.iospress.com:443/articles/clinical-hemorheology-and-microcirculation/ch200813>)

Authors: [Zhong, Li-Chang](https://content.iospress.com:443/search?q=author%3A%28%22Zhong%2C+Li-Chang%22%29) (<https://content.iospress.com:443/search?q=author%3A%28%22Zhong%2C+Li-Chang%22%29>) | [Yang, Tian](https://content.iospress.com:443/search?q=author%3A%28%22Yang%2C+Tian%22%29) (<https://content.iospress.com:443/search?q=author%3A%28%22Yang%2C+Tian%22%29>) | [Gu, Li-Ping](https://content.iospress.com:443/search?q=author%3A%28%22Gu%2C+Li-Ping%22%29) (<https://content.iospress.com:443/search?q=author%3A%28%22Gu%2C+Li-Ping%22%29>) | [Ma, Fang](https://content.iospress.com:443/search?q=author%3A%28%22Ma%2C+Fang%22%29) (<https://content.iospress.com:443/search?q=author%3A%28%22Ma%2C+Fang%22%29>)

Article Type: Research Article

Abstract: PURPOSE: To evaluate the diagnostic value of shear wave velocity (SWV) ratio for the differential diagnosis of benign and malignant breast lesions. MATERIAL AND METHODS: Our retrospective study included 151 breast lesions that were diagnosed by biopsy and surgical pathology. All of the breast lesions were detected by conventional ultrasound and Virtual Touch tissue quantification (VTQ) and mammography. The sonographic characteristics of the breast lesion, such as the internal echo, shape, margin, color flow, and calcification so on, were also observed. The SWV in lesions and surrounding parenchyma were measured and the SWV ratio between the lesion and ... [Show more](#)

Keywords: Breast cancer, virtual touch tissue quantification, SWV ratio, mammography

DOI: 10.3233/CH-200813

Citation: [Clinical Hemorheology and Microcirculation](https://content.iospress.com:443/journals/clinical-hemorheology-and-microcirculation) (<https://content.iospress.com:443/journals/clinical-hemorheology-and-microcirculation>), vol. 77, no. 2, pp. 123-131, 2021

Price: EUR 27.50

- [Lymphocyte to monocyte ratio may predict increased carotid intima-media thickness in patients with subclinical hypothyroidism](https://content.iospress.com:443/articles/clinical-hemorheology-and-microcirculation/ch200820) (<https://content.iospress.com:443/articles/clinical-hemorheology-and-microcirculation/ch200820>)

Authors: [Yurtdaş, Mustafa](https://content.iospress.com:443/search?q=author%3A%28%22Yurtda%C5%9F%2C+Mustafa%22%29) (<https://content.iospress.com:443/search?q=author%3A%28%22Yurtda%C5%9F%2C+Mustafa%22%29>) | [Asoğlu, Ramazan](https://content.iospress.com:443/search?q=author%3A%28%22Aso%C4%9Flu%2C+Ramazan%22%29) (<https://content.iospress.com:443/search?q=author%3A%28%22Aso%C4%9Flu%2C+Ramazan%22%29>) | [Özaydın, Adnan](https://content.iospress.com:443/search?q=author%3A%28%22C3%96zayd%C4%B1n%2C+Adnan%22%29) (<https://content.iospress.com:443/search?q=author%3A%28%22C3%96zayd%C4%B1n%2C+Adnan%22%29>) | [Doğan, Zeki](https://content.iospress.com:443/search?q=author%3A%28%22Do%C4%9Fan%2C+Zeki%22%29) (<https://content.iospress.com:443/search?q=author%3A%28%22Do%C4%9Fan%2C+Zeki%22%29>)

Article Type: Research Article

Abstract: BACKGROUND: Inflammation has an important role in the pathogenesis of atherosclerosis. Lymphocyte-to-monocyte ratio (LMR) is accepted as an indicator of inflammation. OBJECTIVE: Our aim was to scrutinize the relationship between LMR and subclinical atherosclerosis (SubAth) measured by carotid intima-media thickness (CIMT) in subclinical hypothyroidism (SubHT). METHODS: Newly identified 190 SubHT patients were prospectively included into the study. Blood samples were taken for measuring laboratory parameters. Then, CIMT was computed. Patients were separated into 2 groups by their CIMT value (Group-1:

≤0.9 and Group-2: >0.9mm), and then stratified into tertiles pursuant to LMR and thyroid-stimulating hormone (TSH) ... [Show more](#)

Keywords: Lymphocyte-to-monocyte ratio, carotid intima-media thickness, subclinical atherosclerosis, inflammation, subclinical hypothyroidism

DOI: 10.3233/CH-200820

Citation: [Clinical Hemorheology and Microcirculation \(https://content.iospress.com:443/journals/clinical-hemorheology-and-microcirculation\)](https://content.iospress.com:443/journals/clinical-hemorheology-and-microcirculation), vol. 77, no. 2, pp. 133-142, 2021

Price: EUR 27.50

[Value of image-pro plus for assisting virtual touch tissue imaging in the diagnosis of thyroid nodules \(https://content.iospress.com:443/articles/clinical-hemorheology-and-microcirculation/ch200983\)](https://content.iospress.com:443/articles/clinical-hemorheology-and-microcirculation/ch200983)

Authors: [Lian, Kai-Mei \(https://content.iospress.com:443/search?q=author%3A%28%22Lian%2C+Kai-Mei%22%29\)](https://content.iospress.com:443/search?q=author%3A%28%22Lian%2C+Kai-Mei%22%29) | [Lin, Teng \(https://content.iospress.com:443/search?q=author%3A%28%22Lin%2C+Teng%22%29\)](https://content.iospress.com:443/search?q=author%3A%28%22Lin%2C+Teng%22%29)

Article Type: Research Article

Abstract: Purpose: The value of virtual touch tissue imaging (VTI) with support of Image-Pro Plus (IPP) for diagnosing malignant thyroid tumors was assessed in the present study. Methods: In this retrospective study, we enrolled 160 patients with 198 thyroid nodules. TI-RADS, VTI grade, and VTI with support of IPP (VTI-IPP) were underwent for each nodule. With the pathological diagnosis as the gold standard, the receiver-operating characteristic curve (ROC) was drawn to evaluate the diagnostic performance of VTI-IPP, VTI, TI-RADS, VTI-IPP combine with TI-RADS in thyroid carcinoma. Results: VTI-IPP score >2, VTI score >3, TI-RADS score >1, and ... [Show more](#)

Keywords: Thyroid nodules, virtual touch tissue image, thyroid imaging reporting and data system, Image-Pro Plus

DOI: 10.3233/CH-200983

Citation: [Clinical Hemorheology and Microcirculation \(https://content.iospress.com:443/journals/clinical-hemorheology-and-microcirculation\)](https://content.iospress.com:443/journals/clinical-hemorheology-and-microcirculation), vol. 77, no. 2, pp. 143-151, 2021

Price: EUR 27.50

[Long non-coding RNA GAS5 knockdown facilitates proliferation and impedes apoptosis by regulating miR-128-3p/FBLN2 axis in ox-LDL-induced THP-1 cells \(https://content.iospress.com:443/articles/clinical-hemorheology-and-microcirculation/ch200897\)](https://content.iospress.com:443/articles/clinical-hemorheology-and-microcirculation/ch200897)

Authors: [Shen, Zijian \(https://content.iospress.com:443/search?q=author%3A%28%22Shen%2C+Zijian%22%29\)](https://content.iospress.com:443/search?q=author%3A%28%22Shen%2C+Zijian%22%29) | [Li, Haigang \(https://content.iospress.com:443/search?q=author%3A%28%22Li%2C+Haigang%22%29\)](https://content.iospress.com:443/search?q=author%3A%28%22Li%2C+Haigang%22%29)

Article Type: Research Article

Abstract: BACKGROUND: Long non-coding RNAs (lncRNAs) are found to involve in modulating the

development of atherosclerosis (AS). But the molecular mechanism of lncRNA growth-arrest specific transcript 5 (GAS5) in AS is not fully understood. METHODS: QRT-PCR was performed to measure the abundances of GAS5, miR-128-3p and fibulin 2 (FBLN2). Oxidized low-density lipoprotein (ox-LDL)-treated THP-1 cells were employed as cell models of AS. The cell proliferation and apoptosis were analyzed using CCK-8 and Flow cytometry assays, respectively. Levels of all protein were examined by western blot. The interaction among GAS5, miR-128-3p and FBLN2 was confirmed via dual-luciferase reporter and RNA ... [Show more](#)

Keywords: Atherosclerosis, ox-LDL, lncRNA GAS5, miR-128-3p, FBLN2

DOI: 10.3233/CH-200897

Citation: [Clinical Hemorheology and Microcirculation \(https://content.iospress.com:443/journals/clinical-hemorheology-and-microcirculation\)](https://content.iospress.com:443/journals/clinical-hemorheology-and-microcirculation), vol. 77, no. 2, pp. 153-164, 2021

Price: EUR 27.50

- [Laparoscopy-guided percutaneous microwave ablation for symptomatic 12.8 cm hepatic hemangioma with low blood loss and short hospital stay post-operation: A case report and literature review \(https://content.iospress.com:443/articles/clinical-hemorheology-and-microcirculation/ch200922\)](https://content.iospress.com:443/articles/clinical-hemorheology-and-microcirculation/ch200922)

Authors: [Zhang, Hui-Li \(https://content.iospress.com:443/search?q=author%3A%28%22Zhang%2C+Hui-Li%22%29\)](https://content.iospress.com:443/search?q=author%3A%28%22Zhang%2C+Hui-Li%22%29) | [Meng, Hong-Bo \(https://content.iospress.com:443/search?q=author%3A%28%22Meng%2C+Hong-Bo%22%29\)](https://content.iospress.com:443/search?q=author%3A%28%22Meng%2C+Hong-Bo%22%29) | [Li, Xiao-Long \(https://content.iospress.com:443/search?q=author%3A%28%22Li%2C+Xiao-Long%22%29\)](https://content.iospress.com:443/search?q=author%3A%28%22Li%2C+Xiao-Long%22%29) | [Sun, Li-Ping \(https://content.iospress.com:443/search?q=author%3A%28%22Sun%2C+Li-Ping%22%29\)](https://content.iospress.com:443/search?q=author%3A%28%22Sun%2C+Li-Ping%22%29) | [Lu, Feng \(https://content.iospress.com:443/search?q=author%3A%28%22Lu%2C+Feng%22%29\)](https://content.iospress.com:443/search?q=author%3A%28%22Lu%2C+Feng%22%29) | [Xu, Hui-Xiong \(https://content.iospress.com:443/search?q=author%3A%28%22Xu%2C+Hui-Xiong%22%29\)](https://content.iospress.com:443/search?q=author%3A%28%22Xu%2C+Hui-Xiong%22%29) | [Yu, Song-Yuan \(https://content.iospress.com:443/search?q=author%3A%28%22Yu%2C+Song-Yuan%22%29\)](https://content.iospress.com:443/search?q=author%3A%28%22Yu%2C+Song-Yuan%22%29)

Article Type: Research Article

Abstract: We described a patient with symptomatic giant hepatic hemangioma (GHH) treated with laparoscopic guided percutaneous microwave ablation (MWA). A 58 years' old woman was referred to our hospital who presented with upper abdominal distension and appetite loss for more than 1 year. The medical history included untreated multiple hepatic hemangiomas (HH) that had been detected 13 years ago and hypertension for more than 12 years. Initial laboratory tests revealed D-dimer mild increase and negative tumor markers. Magnetic resonance (MR) imaging demonstrated multiple nodules of different sizes in the liver and the largest lesion was located on the left lobe (longest ... [Show more](#)

DOI: 10.3233/CH-200922

Citation: [Clinical Hemorheology and Microcirculation \(https://content.iospress.com:443/journals/clinical-hemorheology-and-microcirculation\)](https://content.iospress.com:443/journals/clinical-hemorheology-and-microcirculation), vol. 77, no. 2, pp. 165-171, 2021

Price: EUR 27.50

- [Conventional and contrast-enhanced ultrasound features in sclerosing adenosis and correlation with pathology \(https://content.iospress.com:443/articles/clinical-hemorheology-and-microcirculation/ch200943\)](https://content.iospress.com:443/articles/clinical-hemorheology-and-microcirculation/ch200943)

Authors: [Shao, Sihui](https://content.iospress.com:443/search?q=author%3A%28%22Shao%2C+Sihui%22%29) (<https://content.iospress.com:443/search?q=author%3A%28%22Shao%2C+Sihui%22%29>) | [Yao, Minghua](https://content.iospress.com:443/search?q=author%3A%28%22Yao%2C+Minghua%22%29) (<https://content.iospress.com:443/search?q=author%3A%28%22Yao%2C+Minghua%22%29>) | [Li, Xin](https://content.iospress.com:443/search?q=author%3A%28%22Li%2C+Xin%22%29) (<https://content.iospress.com:443/search?q=author%3A%28%22Li%2C+Xin%22%29>) | [Li, Chunxiao](https://content.iospress.com:443/search?q=author%3A%28%22Li%2C+Chunxiao%22%29) (<https://content.iospress.com:443/search?q=author%3A%28%22Li%2C+Chunxiao%22%29>) | [Chen, Jing](https://content.iospress.com:443/search?q=author%3A%28%22Chen%2C+Jing%22%29) (<https://content.iospress.com:443/search?q=author%3A%28%22Chen%2C+Jing%22%29>) | [Li, Gang](https://content.iospress.com:443/search?q=author%3A%28%22Li%2C+Gang%22%29) (<https://content.iospress.com:443/search?q=author%3A%28%22Li%2C+Gang%22%29>) | [Jia, Chao](https://content.iospress.com:443/search?q=author%3A%28%22Jia%2C+Chao%22%29) (<https://content.iospress.com:443/search?q=author%3A%28%22Jia%2C+Chao%22%29>) | [Wu, Rong](https://content.iospress.com:443/search?q=author%3A%28%22Wu%2C+Rong%22%29) (<https://content.iospress.com:443/search?q=author%3A%28%22Wu%2C+Rong%22%29>)

Article Type: Research Article

Abstract: OBJECTIVES: To evaluate the efficacy of conventional ultrasound (US) and contrast-enhanced ultrasound (CEUS) in differential diagnosis of sclerosing adenosis (SA) from malignance and investigate the correlated features with pathology. METHODS: We retrospectively enrolled 103 pathologically confirmed SA. All lesions were evaluated with conventional US while 31 lesions with CEUS. Lesions were divided into SA with or without benign lesions (Group 1, n =81) and SA with malignancy (Group 2, n =22). Performance of two methods were analyzed. The ultrasonographic characteristics were compared between two groups with Student's t -test for measurement and chi-squared or Fisher's exact test for ... [Show more](#)

Keywords: Adenosis of breast, breast cancer, breast ultrasonography

DOI: 10.3233/CH-200943

Citation: [Clinical Hemorheology and Microcirculation](https://content.iospress.com:443/journals/clinical-hemorheology-and-microcirculation) (<https://content.iospress.com:443/journals/clinical-hemorheology-and-microcirculation>), vol. 77, no. 2, pp. 173-181, 2021

Price: EUR 27.50

[The effect of diabetic ketoacidosis \(DKA\) and its treatment on clot microstructure: Are they thrombogenic?](https://content.iospress.com:443/articles/clinical-hemorheology-and-microcirculation/ch200957) (<https://content.iospress.com:443/articles/clinical-hemorheology-and-microcirculation/ch200957>)

Authors: [Pillai, Suresh](https://content.iospress.com:443/search?q=author%3A%28%22Pillai%2C+Suresh%22%29) (<https://content.iospress.com:443/search?q=author%3A%28%22Pillai%2C+Suresh%22%29>) | [Davies, Gareth](https://content.iospress.com:443/search?q=author%3A%28%22Davies%2C+Gareth%22%29) (<https://content.iospress.com:443/search?q=author%3A%28%22Davies%2C+Gareth%22%29>) | [Lawrence, Matthew](https://content.iospress.com:443/search?q=author%3A%28%22Lawrence%2C+Matthew%22%29) (<https://content.iospress.com:443/search?q=author%3A%28%22Lawrence%2C+Matthew%22%29>) | [Whitley, Janet](https://content.iospress.com:443/search?q=author%3A%28%22Whitley%2C+Janet%22%29) (<https://content.iospress.com:443/search?q=author%3A%28%22Whitley%2C+Janet%22%29>) | [Stephens, Jeffrey](https://content.iospress.com:443/search?q=author%3A%28%22Stephens%2C+Jeffrey%22%29) (<https://content.iospress.com:443/search?q=author%3A%28%22Stephens%2C+Jeffrey%22%29>) | [Williams, Phylip Rhodri](https://content.iospress.com:443/search?q=author%3A%28%22Williams%2C+Phylip+Rhodri%22%29) (<https://content.iospress.com:443/search?q=author%3A%28%22Williams%2C+Phylip+Rhodri%22%29>) | [Morris, Keith](https://content.iospress.com:443/search?q=author%3A%28%22Morris%2C+Keith%22%29) (<https://content.iospress.com:443/search?q=author%3A%28%22Morris%2C+Keith%22%29>) | [Evans, Phillip Adrian](https://content.iospress.com:443/search?q=author%3A%28%22Evans%2C+Phillip+Adrian%22%29) (<https://content.iospress.com:443/search?q=author%3A%28%22Evans%2C+Phillip+Adrian%22%29>)

Article Type: Research Article

Abstract: BACKGROUND: Diabetic ketoacidosis (DKA) is a medical emergency with a high mortality rate and is associated with severe metabolic acidosis and dehydration. DKA patients have an increased risk of arterial and venous thromboembolism, however little is known about this metabolic derangement in the first 24 hours of admission and to assess its effect on coagulation. We therefore utilised a novel functional marker of clot microstructure (fractal dimension - df) to assess these changes within the first 24 hours. METHODS: Prospective single centre observational study to demonstrate whether the tendency of blood clot formation differs in DKA ... [Show more](#)

Keywords: Diabetic ketoacidosis (DKA), haemorheology, fractal dimension, gel point

DOI: 10.3233/CH-200957

Citation: [Clinical Hemorheology and Microcirculation \(https://content.iospress.com:443/journals/clinical-hemorheology-and-microcirculation\)](https://content.iospress.com:443/journals/clinical-hemorheology-and-microcirculation), vol. 77, no. 2, pp. 183-194, 2021

Price: EUR 27.50

[Frequent recurrence of pregnancy-triggered congenital thrombotic thrombocytopenic purpura: A rare case report \(https://content.iospress.com:443/articles/clinical-hemorheology-and-microcirculation/ch200970\)](https://content.iospress.com:443/articles/clinical-hemorheology-and-microcirculation/ch200970)

Authors: [Xu, Jialiang \(https://content.iospress.com:443/search?q=author%3A%28%22Xu%2C+Jialiang%22%29\)](https://content.iospress.com:443/search?q=author%3A%28%22Xu%2C+Jialiang%22%29) | [Yu, Sijian \(https://content.iospress.com:443/search?q=author%3A%28%22Yu%2C+Sijian%22%29\)](https://content.iospress.com:443/search?q=author%3A%28%22Yu%2C+Sijian%22%29) | [Zhang, Fuhua \(https://content.iospress.com:443/search?q=author%3A%28%22Zhang%2C+Fuhua%22%29\)](https://content.iospress.com:443/search?q=author%3A%28%22Zhang%2C+Fuhua%22%29)

Article Type: Research Article

Abstract: Thrombotic thrombocytopenic purpura (TTP) in adults is rare thrombotic microangiopathy (TMA), which is closely related to the lack of specific proteases of von Willebrand factor (vWF) multimers. It is currently believed that both congenital TTP (cTTP) and acquired TTP (aTTP) can induce acute attack through pregnancy. We report a case of a 24-year-old woman who was diagnosed as TTP during early pregnancy. A novel mutation was detected: c.3667G>T (p.E1223*). She responded well to plasma therapy during pregnancy and had a child by cesarean section at 32 weeks. TTP is still recurrent in postpartum patients. The plasma transfusion was effective, but ... [Show more](#)

Keywords: Thrombotic thrombocytopenic purpura, ADAMTS13, pregnancy, genetic mutations, CSA

DOI: 10.3233/CH-200970

Citation: [Clinical Hemorheology and Microcirculation \(https://content.iospress.com:443/journals/clinical-hemorheology-and-microcirculation\)](https://content.iospress.com:443/journals/clinical-hemorheology-and-microcirculation), vol. 77, no. 2, pp. 195-200, 2021

Price: EUR 27.50

[Formulation of drug-loaded oligodepsipeptide particles with submicron size \(https://content.iospress.com:443/articles/clinical-hemorheology-and-microcirculation/ch200977\)](https://content.iospress.com:443/articles/clinical-hemorheology-and-microcirculation/ch200977)

Authors: [Brunacci, Nadia \(https://content.iospress.com:443/search?q=author%3A%28%22Brunacci%2C+Nadia%22%29\)](https://content.iospress.com:443/search?q=author%3A%28%22Brunacci%2C+Nadia%22%29) | [Wischke, Christian \(https://content.iospress.com:443/search?q=author%3A%28%22Wischke%2C+Christian%22%29\)](https://content.iospress.com:443/search?q=author%3A%28%22Wischke%2C+Christian%22%29) | [Naolou, Toufik \(https://content.iospress.com:443/search?q=author%3A%28%22Naolou%2C+Toufik%22%29\)](https://content.iospress.com:443/search?q=author%3A%28%22Naolou%2C+Toufik%22%29) | [Patzelt, Alexa \(https://content.iospress.com:443/search?q=author%3A%28%22Patzelt%2C+Alexa%22%29\)](https://content.iospress.com:443/search?q=author%3A%28%22Patzelt%2C+Alexa%22%29) | [Lademann, Jürgen \(https://content.iospress.com:443/search?q=author%3A%28%22Lademann%2C+J%2C%3BCrgen%22%29\)](https://content.iospress.com:443/search?q=author%3A%28%22Lademann%2C+J%2C%3BCrgen%22%29) | [Neffe, Axel T. \(https://content.iospress.com:443/search?q=author%3A%28%22Neffe%2C+Axel+T.%22%29\)](https://content.iospress.com:443/search?q=author%3A%28%22Neffe%2C+Axel+T.%22%29) | [Lendlein, Andreas \(https://content.iospress.com:443/search?q=author%3A%28%22Lendlein%2C+Andreas%22%29\)](https://content.iospress.com:443/search?q=author%3A%28%22Lendlein%2C+Andreas%22%29)

Article Type: Research Article

Abstract: The size of particulate carriers is key to their transport and distribution in biological systems, and needs to be tailored in the higher submicron range to enable follicular uptake for dermal treatment. Oligodepsipeptides are promising nanoparticulate carrier systems as they can be designed to exhibit enhanced

interaction with drug molecules. Here, a fabrication scheme for drug-loaded submicron particles from oligo[3-(S)-sec-butylmorpholine-2,5-dione]diol (OBMD) is presented based on an emulsion solvent evaporation method with cosolvent, surfactant, and polymer concentration as variable process parameters. The particle size (300–950nm) increased with lower surfactant concentration and higher oligomer concentration. The addition of acetone increased ... [Show more](#)

Keywords: Submicron particles, oligodepsipeptide, formulation parameters, emulsion solvent evaporation, surfactant, release kinetics

DOI: 10.3233/CH-200977

Citation: [Clinical Hemorheology and Microcirculation \(https://content.iospress.com:443/journals/clinical-hemorheology-and-microcirculation\)](https://content.iospress.com:443/journals/clinical-hemorheology-and-microcirculation), vol. 77, no. 2, pp. 201-219, 2021

Price: EUR 27.50

Elevated fibrinogen and fibrin degradation product are associated with poor outcome in COVID-19 patients: A meta-analysis (<https://content.iospress.com:443/articles/clinical-hemorheology-and-microcirculation/ch200978>)

Authors: [Nugroho, Johannes \(https://content.iospress.com:443/search?q=author%3A%28%22Nugroho%2C+Johanes%22%29\)](https://content.iospress.com:443/search?q=author%3A%28%22Nugroho%2C+Johanes%22%29) | [Wardhana, Ardyan \(https://content.iospress.com:443/search?q=author%3A%28%22Wardhana%2C+Ardyan%22%29\)](https://content.iospress.com:443/search?q=author%3A%28%22Wardhana%2C+Ardyan%22%29) | [Mulia, Eka Prasetya \(https://content.iospress.com:443/search?q=author%3A%28%22Mulia%2C+Eka+Prasetya%22%29\)](https://content.iospress.com:443/search?q=author%3A%28%22Mulia%2C+Eka+Prasetya%22%29) | [Maghfirah, Irma \(https://content.iospress.com:443/search?q=author%3A%28%22Maghfirah%2C+Irma%22%29\)](https://content.iospress.com:443/search?q=author%3A%28%22Maghfirah%2C+Irma%22%29) | [Rachmi, Dita Aulia \(https://content.iospress.com:443/search?q=author%3A%28%22Rachmi%2C+Dita+Aulia%22%29\)](https://content.iospress.com:443/search?q=author%3A%28%22Rachmi%2C+Dita+Aulia%22%29) | [A'yun, Maya Qurota \(https://content.iospress.com:443/search?q=author%3A%28%22A%E2%80%99yun%2C+Maya+Qurota%22%29\)](https://content.iospress.com:443/search?q=author%3A%28%22A%E2%80%99yun%2C+Maya+Qurota%22%29) | [Septianda, Imanita \(https://content.iospress.com:443/search?q=author%3A%28%22Septianda%2C+Imanita%22%29\)](https://content.iospress.com:443/search?q=author%3A%28%22Septianda%2C+Imanita%22%29)

Article Type: Research Article

Abstract: INTRODUCTION: COVID-19 is a systemic infection with a significant impact on coagulation which manifests in thromboembolism. There is an unknown relationship of which coagulation profile parameter at presentation has an association with poor outcome in COVID-19. OBJECTIVE: This meta-analysis aimed to determine the relationship between fibrinogen and FDP with poor outcome in COVID-19 patients. METHODS: A systematic search of all observational studies or trials involving adult patients with COVID-19 that had any data fibrinogen or FDP on admission was carried out using the PubMed, Science Direct, Scopus, ProQuest, and MedRxiv databases. We assessed the methodological quality ... [Show more](#)

Keywords: COVID-19, fibrinogen, fibrin degradation product, severity, mortality, prognostic factor

DOI: 10.3233/CH-200978

Citation: [Clinical Hemorheology and Microcirculation \(https://content.iospress.com:443/journals/clinical-hemorheology-and-microcirculation\)](https://content.iospress.com:443/journals/clinical-hemorheology-and-microcirculation), vol. 77, no. 2, pp. 221-231, 2021