

Integrated Text Mining and Kansei Engineering Methodology for Excellent Amusement Park Services

Markus Hartono

Department of Industrial Engineering
Faculty of Engineering
University of Surabaya
markus@staff.ubaya.ac.id

Dina Natalia Prayogo

Department of Industrial Engineering
Faculty of Engineering
University of Surabaya
dnprayogo@staff.ubaya.ac.id

Feby Juana Candra

Department of Industrial Engineering
Faculty of Engineering
University of Surabaya
febyjcan@gmail.com

Abstract

The excellent service with full emotional (Kansei) satisfaction for an amusement park is a must. Today the customers expect not only for the amazing show itself, but also the friendliness of staff, the cleanliness of the area, and the benefit package for family as family is the targeted segment for any amusement park industries. In fulfilling the full satisfaction of customer, the amusement park service provider should always provide what the customer needs and close the gap between what expected and perceived by the customer. The challenge is that customer not always at the right time and moment revealing what their expectations and critics. One way to get what genuinely customer feels about the service is through the reviews gathered from social media. In addition, there will be abundant and various customer feedbacks unconstrained by time or any pressures. Hence, we proposed text mining and Kansei Engineering methodology taken an empirical study on an amusement park services in Indonesia. It was found that the critical Kansei was “safe” and the service attribute was “the amusement park rides for family”. Adding new amusement park rides and providing its regular maintenance schedule might be considered as sufficient solutions, with regard to limited resources.

Keywords

Kansei Engineering, amusement park, service excellence, mining

1. Introduction

Kansei Engineering (KE) method has evolved. It has been applied extensively in physical products and non-physical services. Due to the complexity of customer Kansei, an approach in investigating and finalizing the “real” and representative Kansei has been proposed. It is a new approach in refining the exploration process of Kansei words. Hartono et al (2021) have tried to propose a study of Kansei-based mining and robust design for internet service provider. It is a refined KE methodology with confirmatory analysis (Hartono, 2020) incorporating mining process. The rationale is that how do we collect Kansei accurately and then match it to the service design items and attributes? It leads to a question, are the Kansei words really representative? Are they robust enough? Though, an opportunity to refine the methodology due to the dynamics of problem and customer Kansei is always open.

KE has received a lot of attention from scholars and industries. It aims to incorporate the customer emotional needs into the design elements that fulfilling the customer Kansei satisfaction. The main challenge for KE stems from the difficulty in mapping the subjective impressions of customers, namely Kansei, to the perceptual service design elements and attributes. This study intends to develop explicit decision support to improve the Kansei mapping process by reusing knowledge from past sales records, customer feedbacks, and service experiences.

With the rapid development of global markets and advanced technology, it is most likely that many similar services will be found functionally equivalent. Customers may find it difficult to differentiate and choose from the various service offerings. If all service offerings have the same features and usability, it raises a confusion to customers, which one is the best and profitable? Hence, it is very crucial to design services by incorporating customer emotional needs and attention so as to differentiate among service offerings.

This paper discusses an empirical study on amusement park services by identifying customer Kansei through mining process, mapping the significant relationship between Kansei words and amusement park service attributes, and setting prioritized improvement strategies. This service setting is deemed to be interesting and critical as it is one of tourism industries. With regard to post pandemic period, the tourism industries are expected to rise. People like to hang out with their family members and enjoy the moment together. The tourism industries are hoped to adapt, innovate, and collaborate well. Adaptation means a new practice and regulation to be formulized in facing new transition from pandemic to new normal lifestyle. Innovation shows new ideas of service offerings with regard to adjusted rules and procedures applied in amusement park. Collaboration promotes positive and well-defined win-win solution between service provider of amusement park and its prospective stakeholders. Overall, the objective is to fulfil, retain, and level up the customer emotional satisfaction (Kansei response).

1.1 Objectives

There is a two-fold objective for this study: (a) to provide a refined integrative framework of KE-based mining process for promoting service excellence, and (b) to show the practicability of the proposed integrative framework by taking an empirical study on amusement park services.

2. Brief Literature Review

2.1 Kansei Engineering Updates

KE has been developed in both product and service design. The main objective is to achieve customer and user satisfaction. In general, KE is well known as a method for interpreting and translating customer emotional needs into product or service design elements and components (Nagamachi, 1995). There were at least 6 types of KE proposed by Mitsuo Nagamachi, covering the application in home interior designs, automotives, cosmetics, and homewares. Recent study of Kansei has tried to engage KE methodology with technology-enabled stuffs such as virtual reality, augmented reality, and apps-based products (Nagamachi & Lokman, 2011; Nagamachi & Lokman, 2015). More recent KE studies adopted the Kansei modeling to reduce any potential uncertainties and complexities in connecting the Kansei words and visual expressions. A generic methodology of KE is provided in Figure 1.

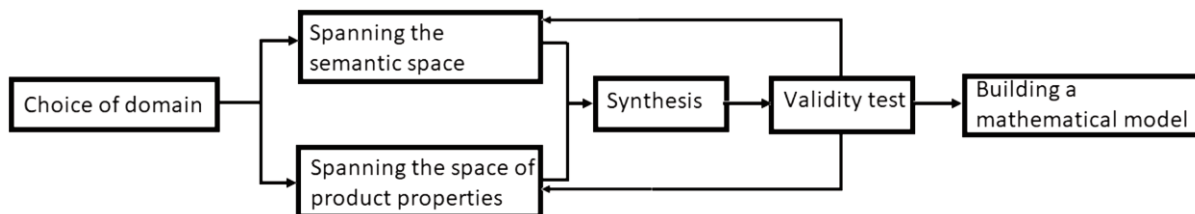


Figure 1. General Kansei Engineering methodology (Schütte et al., 2004)

Nevertheless, using any modified KE methodologies, the well-known model is that Kansei is set to be a function of perceived products or services interaction and experience. There are two important entities in the KE ecosystem, namely, user or customer and product or service attributes. Apart from the diverse application of KE in product and service, the evolution of KE was also incorporating relevant quality tools for the refinement and modification of KE

methodology. Referring to Hartono & Tan (2011), a popular service quality called as Kano model has been inserted into KE phases in order to enhance the efficiency and flexibility of the KE methodology. Kano model is used to identify and map out the level of service attribute performance based on customer experience and evaluation. Moreover, other quality and product/service development tools and methodologies were also integrated, such as, Quality Function Deployment (QFD), Design Thinking (DT), Taguchi, and mining process (Hartono, 2022). QFD is bridging the customer needs (named as WHAT) and physical design characteristics (named as HOW). DT puts the emotional needs (Kansei) as the most critical part in empathy phase. Taguchi is used to explore the robustness of proposed solution. Finally, the mining process is proposed to gather and utilize valuable emotional needs and responses of customer due to product or service experiences.

2.2 Kansei Mining Process

The main challenge and opportunity for Kansei-based design and development is that to capture the customer needs (Kansei) correctly and translate them into service attributes accurately. Once the service design elements and attributes are finalized, it should be ensured that the perception of product/service performance fits the customer Kansei. However, it is not that always easy since there is different cultural backgrounds or linguistic origins. Due to difficulty in translating Kansei into verbal descriptions, it leads to imprecise customer emotional needs (Helander & Khalid, 2005). In addition, the collected Kansei words are short-lived lasting. It contributes to the ambiguity of perceived Kansei. Thus, Kansei mining process is proposed. Studies of mining process applied in services have been conducted such as hotel services (Liu et al., 2017) and online products (Wang et al., 2018).

3. Method & Framework

This study took an exercise according to the previous studies using a modified framework of Kansei-based engineering text mining process taking a case study on amusement park services. As seen in Figure 2, it starts with customer feedbacks as voice of customer and ends with improvement strategy. The general methodology of Kansei mining process has been proposed (see Hartono, 2021) and refined according to the case on amusement park service excellence (see Figure 2).

Once the customer feedbacks through web harvesting are collected, the process is continued to text mining and sentiment analysis. It is split into two parts, namely, service attribute gap analysis and Kansei perception analysis. In the section of service attribute gap analysis, the satisfaction analysis will be conducted. If the result is positive satisfaction, then the company should keep up the good quality standard, otherwise, it continues to linear modeling engaged with Kano categorization. The result is that the critical service attributes, and then wrapped up with improvement strategy through House of Quality (HoQ).

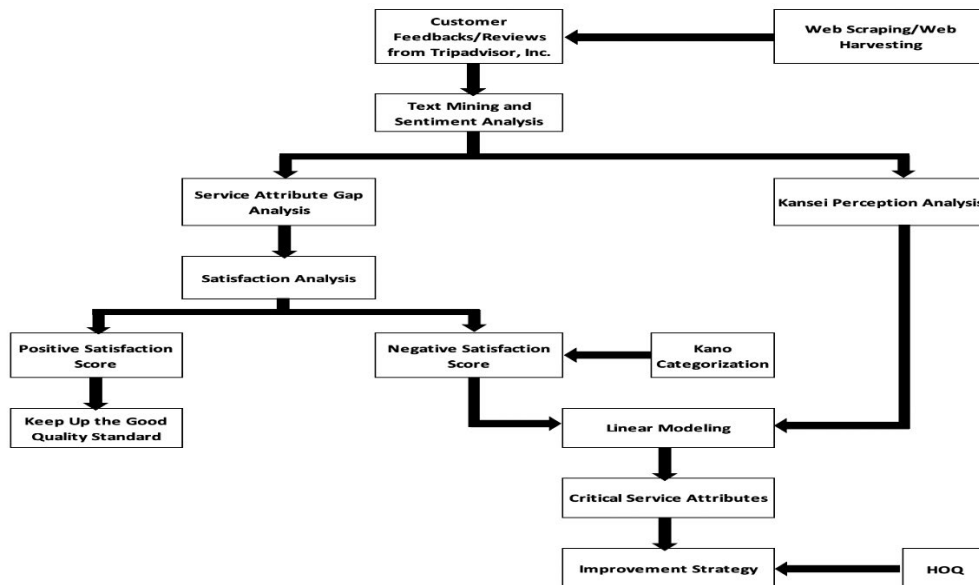


Figure 2. Integrated Framework of Kansei Mining for Amusement Park Service Excellence

No	Code	Service attributes	Kano category	Importance weight*	%	Cumulative %	Improve?
11	T2	Green area	O	5.08	2%	97%	
12	R2	Functionality of facilities	O	4.82	2%	99%	
13	A3	Secured parking lots	O	2.40	1%	100%	

*Importance weight = |satisfaction score| x Kano weight x number of significant Kansei x Kansei average score

**the example of how to calculate the importance weight for attribute R3 (The amusement park rides for family). Importance weight = |1.46| x 4 x 2 x 3.995 = 46.49.

According to Pareto principle, there were 8 service attributes prioritized for improvement (as shown in Table 2), and it was found that the service attribute “the amusement park rides for family” deemed to be the most critical one. Through literature review and benchmarking process, there were several improvement initiatives, such as adding new amusement park rides for family, regular maintenance schedule for amusement park rides, and providing user-friendly apps for amusement park rides. The service provider should prioritize which one of these three improvement initiatives is chosen due to limited resources or possible constraints.

5. Conclusion

Fulfilling customer emotional needs (Kansei) is quiet challenging. It is not only because of the translation process, but also how to ensure appropriate and representative Kansei. Both external and internal factors influencing customer Kansei should be considered and put in the service design and development, especially for tourism industry which is of interesting in today’s economy. Hence, text mining and Kansei Engineering methodology taken an empirical study on an amusement park service in Indonesia was proposed. This study might be enhanced especially in the relationship between Kansei and perceived service attributes. Due to Kansei dynamics, more appropriate methods are welcome to investigate, and might also include usability analysis for technology-enabled products/services (Prastawa et al., 2019). It is also supported by the complexity of product or service experiences. More complex product or service will lead the more complex Kansei.

6. Acknowledgement

This research was fully funded by the research grant from the Ministry of Education, Culture, Research, and Technology Republic of Indonesia year 2022 with a contract number: 004/SP2H/PT-L/LL7/2022, 066/SP-Lit/LPPM-01/KemendibudRistek/Multi/FT/III/2022.

References

- Hartono, M., The development of Kansei-based mining model for robust service design, *IOP Conference Series: Materials Science and Engineering*, 1072 012057, 2021.
- Hartono, M., Kansei engineering and product-service systems (KEPSS) integrative framework for customer-centered experience, *AIP Conference Proceedings*, 2470 020002, 2022.
- Hartono, M. and Tan, K.C., How the Kano model contributes to Kansei engineering in services, *Ergonomics*, vol. 54 (11), pp. 987–1004, 2011.
- Hartono, M., The modified Kansei Engineering-based application for sustainable service design, *International Journal of Industrial Ergonomics*, vol. 79, 2020.
- Liu, Y., Teichert, T., Rossi, M., Li, H. and Hu, F., Big Data for Big Insights: Investigating Language Specific Drivers of Hotel Satisfaction with 412,784 User-Generated Reviews, *Tourism Management*, vol. 59, pp. 554–563, 2017.
- Nagamachi, M., Kansei engineering: a new ergonomic consumer-oriented technology for product development, *International Journal of Industrial Ergonomics*, vol. 15 (1), pp. 3–11, 1995.
- Nagamachi, M. and Lokman, A.M., Innovation of Kansei Engineering. Boca Raton, FL, USA: CRC Press, Taylor & Francis Group, 2011.
- Nagamachi, M. and Lokman, A.M., Kansei Innoation – Practical Design Applications for Product and Service Development. Boca Raton, FL, USA: CRC Press, Taylor & Francis Group, 2015.
- Prastawa, H., Ciptomulyono, U., Singgih, M.L., and Hartono, M., The effect of cognitive and affective aspects on usability, *Theoretical Issues in Ergonomics Science*, vol. 20 (4), pp. 507-531, 2019.
- Schütte, S., Eklund, J., Axelsson, J.R.C., and Nagamachi, M., Concepts, methods, and tools in Kansei engineering, *Theoretical Issues in Ergonomics Science*, vol. 5, pp. 214–232, 2004.
- Wang, W.M., Li, Z., Tian, Z.G., Wang, J.W. and Cheng, M.N., Extracting and Summarizing Affective Features and Responses from Online Product Descriptions and Reviews: A Kansei Text Mining Approach, *Engineering Applications of Artificial Intelligence*, vol. 73, pp. 149-162, 2018.

Biography

Markus Hartono is a Professor in the Department of Industrial Engineering, University of Surabaya, Indonesia. He earned B.Eng in Industrial Engineering from University of Surabaya, MSc and PhD in Industrial and Systems Engineering from National University of Singapore, Singapore. He has published journal and conference papers in the area of ergonomics, Kansei engineering, service quality and management. He serves as the member of affective design technical group in International Ergonomics Association (IEA).

Dina Natalia Prayogo is a lecturer from Department of Industrial Engineering, University of Surabaya. She completed her PhD from Institute Technology of Sepuluh Nopember, Surabaya (ITS). Her major research interests are operations research, text mining process, and vehicle routing problems.

Feby Juana Candra is a fresh graduate from Department of Industrial Engineering, University of Surabaya. She has a project interest in Kansei engineering and service excellence.

3rd Asia Pacific Conference Industrial Engineering and Operations Management

*Johor Bahru,
Malaysia*

Organizer



SEPTEMBER 13-15, 2022



Host

Co-Host

3rd Asia Pacific Conference on Industrial Engineering and Operations Management

Johor Bahru, Malaysia, September 13-15, 2022 – Virtual

*Theme: “Reconstructing and Developing Industrial Engineering and Operation
Management Sciences in VUCA Situation”*

**Host: Universiti Teknologi Malaysia (UTM), Co-Host: Universitas
Sebelas Maret (UNS), Indonesia**

**Conference Chair: Dr. Jafri and Conference Co-Chair: Dr. Sutopo
(wahyudisutopo@staff.uns.ac.id)**

September 2022, Vol. 12, No. 6

Proceedings of the International Conference on Industrial Engineering and Operations
Management

ISSN / E-ISSN: 2169-8767

ISBN: 978-1-7923-9162-0

3rd Asia Pacific Conference on Industrial Engineering and Operations Management

(Johor Bahru, Malaysia, September 13-15, 2022)

Editor-in-Chief

Md Saiful Islam, Ph.D.

IEOM Society International

Assistant Editor

Aqib Islam

IEOM Society International

Editorial Board:

Ahad Ali, Lawrence Technological University, USA

Eldon Caldwell, University of Costa Rica, Costa Rica

Guilherme Tortorella, Federal University of Santa Catarina (UFSC), Trindade, Florianópolis – SC, Brazil

Henrique Ewbank, FACENS University, Sorocaba, Sao Paulo, Brazil

Lucila Maria de Souza Campos, Federal University of Santa Catarina (UFSC), Brazil

Luis Rocha-Lona, Instituto Politecnico Nacional, Mexico

Luz María Valdez de la Rosa, Engineering Department, University of Monterrey, México

Marcelo Santana – IFSP Sorocaba

Narciso Santaella – Lopes Consultoria de Imóveis

Rodrigo Gigante – FACENS University

Vitor M. Caldana, IFSP – Instituto Federal de São Paulo – Campus Sorocaba, SP, Brazil

International Conference of Industrial Engineering and Operations Management (ICIEOM) aims to publish quality research work in the field of industrial engineering and operations management (IEOM) for academics, researchers and practitioners to advance the theory and practice as well as to identify major trends in industrial engineering and operations management. The journal is expected to advance the theory and practice through publishing research-oriented papers with wide variety of problems related on real-life applications and research which affect in global levels.

ICIEOM covers academic research and industrial issues/applications related on fundamentals of industrial engineering, operations management, business management, operations, design, manufacturing, supply chain management, logistics, systems and service engineering, innovation, entrepreneurship, reliability, quality, lean, six sigma, modeling, simulation, optimization, sustainability, machine learning, and artificial intelligence. The application areas include manufacturing, healthcare, energy, transportation, financial, and business operations. Articles must have scientific research contribution with state-of-the-art review.

Published by IEOM Society International, 21411 Civic Center Dr., Suite # 205, Southfield, Michigan 48076, Phone 1-248-450-5660, Email: info@ieomsociety.org

Open access proceeding is available online at <http://ieomsociety.org/ieom/proceedings/>

Production Director

Md Taufiqul Islam, Ph.D.

Cover Illustration

Takiyah Ali

Webmaster

Suvro Sudip

IEOM Asia Pacific Conference COMMITTEE September 13-15, 2022

(Location: Johor Bahru, Malaysia)

© IEOM Society International 3rd Asia Pacific Conference

Conference Committee

Honorary Chairs

- Dr. Kuncoro Diharjo, S.T., M.T., Vice Rector for Research and Innovation, Universitas Sebelas Maret (UNS)
- techn. Ir. Sholihin As'ad, M.T., Dean, Faculty of Engineering Universitas Sebelas Maret (UNS)

Conference Chairs

- Dr. Jafri Mohd. Rohani, Associate Professor, Materials, Manufacturing & Industrial Engineering, School of Mechanical Engineering, Faculty of Engineering, Universiti Teknologi Malaysia, Johor, Malaysia
- Dr. Ir. Wahyudi Sutopo, ST., M.Si, IPM, Professor, Dept. of Industrial Engineering, Universitas Sebelas Maret (UNS), Indonesia and President, IEOM Indonesia Chapter & Director, IEOM Asia Pacific Operations
- Ahad Ali, Ph.D., Executive Director – IEOM Society. Professor and Director of IE, Lawrence Technological University, Southfield, Michigan, USA

Program Chairs

- Dr. Muh. Hisjam, STP, MT, Department of Industrial Engineering, Universitas Sebelas Maret
- Dwi Agustina Kurniawati, S.T., M.Eng., Ph.D, Department of Industrial Engineering, Universitas Islam Negeri Sunan Kalijaga, Yogyakarta, Indonesia
- Dr. Anak Agung Sagung Manik Mahachandra Jayanthi Mertha, ST, MSc, Department of Industrial Engineering, Universitas Diponegoro, Semarang, Indonesia

Technical Chairs

- Abdul Talib Bon, Professor of Technology Management, Universiti Tun Hussein Onn Malaysia and President of IEOM Malaysia Chapter

- Adibah Shuib, Associate Professor, Faculty of Computer and Mathematical Sciences, Universiti Teknologi MARA, Shah Alam, Malaysia
- Ts. Dr. Muhd Ikmal Isyraf Bin Mohd Maulana, Senior Lecturer, School of Mechanical Engineering, Universiti Teknologi Malaysia

Diversity and Inclusion Chairs / Women in Industry and Academia Chairs

- Lina Gozali, S.T., M.M., Ph.D, Department of Industrial Engineering, Universitas Tarumanegara, Jakarta, Indonesia

Global Engineering Education Chairs & The 2nd Indonesia Engineering Education Conference (the 2ND IEEC) COMMITTEE:

- Prof. Dr. Ir. Wahyudi Sutopo, ST., M.Si, IPM Industrial Engineering Department, Universitas Sebelas Maret, Indonesia (Chair),
- Dr. Naniek Utami Handayani, S.Si, MT, Department of Industrial Engineering, Universitas Diponegoro, Semarang, Indonesia (Co-Chair),
- Assoc. Prof. Dr Syed Ahmad Helmi Syed Hassan, Associate Fellow, Center for Engineering Education (CEE), Universiti Teknologi Malaysia (Co-Chair),
- Dr. Abu Masud, Wichita State University, Kansas, USA (Co-Chair),
- Dr. Techn.Ir. Sholihin As'ad, M.T., Civil Engineering Department, Faculty of Engineering Universitas Sebelas Maret
- Prof. Ir. M. Agung Wibowo, MM, M.Sc, Ph.D., Civil Engineering Department, Faculty of Engineering, Universitas Diponegoro, Semarang, Indonesia
- Prof. Dody Ariawan, S.T., M.T., Ph.D., Mechanical Engineering Department, Faculty of Engineering, Universitas Sebelas Maret,
- Dr. Titis Srimuda Pitana, ST, M.Trop., Arch., Architecture Department, Faculty of Engineering, Universitas Sebelas Maret,
- Dr. Eng. Kusumaningdyah Nurul Handayani, S.T., M.T. Architecture Department, Faculty of Engineering, Universitas Sebelas Maret,
- Dr. Hamid Parsaei, Texas A&M University (College Station) and Texas A&M University, Qatar,
- Dr. Grace Kanakana of Tshwane University of Technology, Pretoria, South Africa,
- Dr. Achmad Basuki, ST., MT, Civil Engineering Department, Universitas Sebelas Maret,
- Dr. Yosafat Winarto, ST, MT, Architecture Department, Universitas Sebelas Maret,
- Dr. Muh. Hisjam, STP, MT, Industrial Engineering Department, Universitas Sebelas Maret,
- Fitriani Imaduddin, S.T., M.Sc., Ph.D, Mechanical Engineering Department, Universitas Sebelas Maret

- Dr. Joko Waluyo, ST., MT, Chemical Engineering Department, Universitas Sebelas Maret,
- Ratri Werdiningtyas, S.T., M.T., Ph.D, Regional Urban Planinning Department, Universitas Sebelas Maret,
- Dr. Eng Faisal Rahutomo, ST., M.Kom. Electrical Engineering Department, Universitas Sebelas Maret

Conference Secretariat

- Dr. Taufiquil Islam, Operations Manager, IEOM Society International
- Mahir Ahmad Faysal, Associate Operations Manager

Track Chairs

Artificial Intelligence

- Dr. Mohd Faridh B. Ahmad Zaharuddin, Universiti Teknologi Malaysia
- Associate Professor Dr. Adnan Bin Hassan, Universiti Teknologi Malaysia

Automation and Agility

- Dr. Mohd Faridh B. Ahmad Zaharuddin, Universiti Teknologi Malaysia

Automotive Manufacturing Systems

- Ts. Dr. Muhd Ikmal Isyraf Bin Mohd Maulana, Universiti Teknologi Malaysia
- Ir. Dr. Azman Bin Abas, , Universiti Teknologi Malaysia

Business Management

- Ms Tengku Shahrniza Tengku Abdul Jalal, Multimedia University, Malaysia

Case Studies

- Associate Professor Dr. Tuty Asma Binti Abu Bakar, Universiti Teknologi Malaysia

Cellular Manufacturing

- Professor Dr. Muhamad Zameri Bin Mat Saman, Universiti Teknologi Malaysia

CAD, Applications and Computing

- Ts. Zulkepli Bin Haji Muhamad, Universiti Teknologi Malaysia
- Khidzir Bin Zakaria, Universiti Teknologi Malaysia

Construction Management

- Dr Ihfasuziella Ibrahim, CREAM, CIDB, Malaysia

Cyber Security

- Dr Noor Farizah Ibrahim, Universiti Sains Malaysia

Data Analytics / Business Analytics

- Ts. Ir. Dr. Nor Hasrul Akhmal Bin Ngadiman, Universiti Teknologi Malaysia

Decision Sciences

- Wan Nazdah Bte Wan Hussin, Universiti Teknologi Malaysia

Design and Analysis

- Associate Professor Dr. Aini Zuhra Binti Abdul Kadir, Universiti Teknologi Malaysia
- Associate Professor Dr. Norizah Bt Hj Redzuan, Universiti Teknologi Malaysia

Energy

- Dr. Foo Jin Hoe, Universiti Teknologi Malaysia
- Dr. Mohd Zamri Bin Mohd Yusop, Universiti Teknologi Malaysia
- Dr. Nor Akmal Binti Fadil, Universiti Teknologi Malaysia

Engineering Education

- Associate Professor Dr. Syed Ahmad Helmi Bin Syed Hassan, Universiti Teknologi Malaysia

Engineering Management

- Associate Professor Ts. Dr. Muhamad Azizi Bin Mat Yajid, Universiti Teknologi Malaysia

Environmental Systems Engineering

- Dr. Mohd Firdaus Bin Mohd Taib, Universiti Teknologi Malaysia

Financial Engineering

- Dr. Rozlina Bte Md. Sirat, Universiti Teknologi Malaysia

Healthcare Operations and Services

- Associate Professor Dr. Aini Zuhra Binti Abdul Kadir, Universiti Teknologi Malaysia

Human Factors and Ergonomics

- Dr. Mohd Firdaus Bin Mohd Taib, Universiti Teknologi Malaysia
- Dr. Rozlina Bte Md. Sirat, Universiti Teknologi Malaysia

Industrial Services

- Dr. Joseph Ogundu, Emerald Global Consulting, Southfield, Michigan

Information Systems and Management

- Dr. Farouq Alhourani, University of Tampa, Florida

Innovation

- Dr. Gilson Ditzel Santos, Universidade Tecnológica Federal do Paraná (UTFPR), Pato Branco, Brazil
- Ts. Dr. Muhd Ikmal Isyraf Bin Mohd Maulana, Universiti Teknologi Malaysia

Inventory Management

- Dr. Salvatore Miranda, University of Salerno, Italy

Lean

- Dr. Faranak Fathi Aghdam, (FCA), Michigan
- Ts. Dr. Muhd Ikmal Isyraf Bin Mohd Maulana, Universiti Teknologi Malaysia

Logistics

- Dr. Shahram Taj, Florida Polytechnic University
- Associate Professor Dr. Azanizawati Bt Ma'aram, Universiti Teknologi Malaysia

Manufacturing

- Dr. Ramy Harik, University of South Carolina, Columbia, South Carolina
- Dr. Mohd Azlan Bin Suhaimi, Universiti Teknologi Malaysia
- Ts. Rozaimi Bin Mohd Saad, Universiti Teknologi Malaysia

Mathematical Modeling/Heuristics

- Dr. Aidin Delgoshaei, University of Kharazmi, Iran

Modeling and Simulation

- Dr. Mohammad Dehghani, Northeastern University, Boston, Massachusetts
- Dr. Ali ElKamel, University of Waterloo, Canada
- Professor Dr. Wong Kuan Yew, Universiti Teknologi Malaysia

Operations Management

- Hans-Jürgen Sebastian, Institut für Wirtschaftswissenschaften, RWTH Aachen, Aachen, Germany
- Dr. Amr Elbadan, University of Business and Technology, Jeddah, Saudi Arabia
- Professor Dr. Mohd Hasbullah B Hj. Idris, Universiti Teknologi Malaysia
- Professor Dr. Wong Kuan Yew, Universiti Teknologi Malaysia
- Dr. Engku Mohamad Nazim Engku Abu Bakar, Universiti Teknologi Malaysia
- Dr Mohd Kamarul Irwan Abdul Rahim, Universiti Utara Malaysia

Operations Research

- Dr. Qipeng Phil Zheng, University of Central Florida
- Dr. Azadeh Maroufmashat, Univ. of Waterloo
- Wan Nazdah Bte Wan Hussin, Universiti Teknologi Malaysia

Optimization

- Dr. Mahdi Fathi, Mississippi State University
- Dr. Uday M. Basheer Al-Naib, Universiti Teknologi Malaysia
- Dr. Wan Fahmin Faiz Bin Wan Ali, Universiti Teknologi Malaysia

Product Lifecycle Management (PLM)

- Dr. Bill Edwards, Oakland University, Rochester, MI
- Md Tanbiruj Jaman, AGCO Corp., Hesston, Kansas
- Professor Dr. Safian Bin Sharif, Universiti Teknologi Malaysia

Production Engineering

- Dr. José Lázaro Ferraz, Engineering College of Sorocaba – BRAZIL
- Ts. Dr. Muid Ikmal Isyraf Bin Mohd Maulana, Universiti Teknologi Malaysia

Production Planning and Management

- Dr. Edmund L. Ijumba, Evergreen Packaging, Memphis, Tennessee
- Associate Professor Dr. Syed Ahmad Helmi Bin Syed Hassan, Universiti Teknologi Malaysia

Project Management

- Dr. Arun Nambiar, California State University, Fresno, California
- Afshan Roshani, Permasteelisa North America, Windsor, Connecticut
- Ts. Zulkepli Bin Haji Muhamad, Universiti Teknologi Malaysia

Quality

- Dr. Andy Pandian, Saginaw Valley State University (SVSU), Saginaw Valley, Michigan
- Professor Dr. Noordin Bin Mohd Yusof, Universiti Teknologi Malaysia
- Ts. Ir. Dr. Nor Hasrul Akhmal Bin Ngadiman, Universiti Teknologi Malaysia
- Dr. Abdillah Sani Bin Mohd Najib, Universiti Teknologi Malaysia
- Dr Edly Ferdin Ramly, EFR Certification, Johor, Malaysia

Reliability

- Dr. Seyed A. Niknam, Western New England University, Springfield, Massachusetts

Sensors and Sensing

- Dr. Mukti Rana, Delaware State University, Dover, Delaware

Six Sigma

- Saso Krstovski, Ford Motor Company, Sterling Heights, Michigan
- Ts. Dr. Muhd Ikmal Isyraf Bin Mohd Maulana, Universiti Teknologi Malaysia

Supply Chain / Supply Chain Sustainability / Green Supply Chain

- Associate Professor Dr. Azanizawati Bt Ma'aram, Universiti Teknologi Malaysia

Sustainability

- Dr. Amarjit Singh, University of Hawaii at Manoa, Honolulu, Hawaii
- Professor Dr. Izman Bin Sudin, Universiti Teknologi Malaysia

Sustainable Manufacturing

- Dr. Omar Ashour, Penn State Behrend, Erie, PA

- Professor Dr. Muhamad Zamari Bin Mat Saman, Universiti Teknologi Malaysia

Statistical Process Monitoring

- Dr. Mojtaba Pasha, University of Calgary, Canada
- Mr Hood Atan, Energy Management Training PLT, Johor, Malaysia

Statistics

- Dr. Arjun K. Gupta, Bowling Green State University, Bowling Green, Ohio

Systems Dynamics

- Dr. Mahdi Bastan, University of Eyvanekey, Iran

Systems Engineering

- Dr. Wilkistar Otieno, Univ. of Wisconsin – Milwaukee

Technology Management

- Dr. Masoud Rahiminezhad Galankashi,
- Associate Professor Dr. Norhayati Bt Ahmad, Universiti Teknologi Malaysia
- Dr Mohd Hazim Mohamad Amini, Universiti Malaysia Kelantan

Transportation and Traffic

- Dr. Abbas Mahmoudabadi, Mehrastan University, Gilan, Iran
-

Competition Chairs

Undergraduate Student Paper Competition Sponsored by SIEMENS

- Eko Setiawan, ST, MT, Ph.D., Head of Industrial Engineering Study Programme, Universitas Muhammadiyah Surakarta, Indonesia

- Dr. Ratna Purwaningsih, ST., MT., Head of Industrial Engineering Department, Universitas Diponegoro, Semarang, Indonesia
- Ts. Ir. Dr. Nor Hasrul Akhmal Bin Ngadiman, Universiti Teknologi Malaysia
- Dr. Mohd Azlan Bin Suhaimi, Universiti Teknologi Malaysia
- Dr. Nor Akmal Binti Fadil, Universiti Teknologi Malaysia

Graduate Student Paper Competition Sponsored by EATON Corporation

- Dr. Eng. Desto Jumeno, ST, MT, Head of Master Program in Industrial Engineering, Universitas Andalas, Padang, Indonesia
- Ts. Dr. Muhd Ikmal Isyraf Bin Mohd Maulana, Universiti Teknologi Malaysia
- Dr. Mohd Faridh B. Ahmad Zaharuddin, Universiti Teknologi Malaysia
- Dr. Abdillah Sani Bin Mohd Najib, Universiti Teknologi Malaysia

Master Thesis Competition Chairs

- Dr. Eko Pujiyanto, S.Si, MT, Head of Master Program in Industrial Engineering, Universitas Sebelas Maret, Surakarta, Indonesia
- Dr. Jafri Mohd. Rohani, Universiti Teknologi Malaysia
- Associate Professor Dr. Norizah Bt Hj Redzuan, Universiti Teknologi Malaysia
- Ts. Dr. Muhd Ikmal Isyraf Bin Mohd Maulana, Universiti Teknologi Malaysia
- Dr. Mohd Faridh B. Ahmad Zaharuddin, Universiti Teknologi Malaysia
- Dr. Abdillah Sani Bin Mohd Najib, Universiti Teknologi Malaysia

Doctoral Dissertation Competition Chairs

- Nur Aini Masruroh, ST., M.Sc., Ph.D, Department of Industrial Engineering, Universitas Gadjah Mada (UGM), Yogyakarta, Indonesia
- Dr. Mehran Doulat, Center for Quality and Sustainability, School of Engineering and Advanced Technology, UTM Kuala Lumpur, Malaysia
- Professor Dr. Wong Kuan Yew, Universiti Teknologi Malaysia

Senior Capstone Design Project / FYP Poster Competition Chairs

- Fitra Lestari, Ph.D., Head of Industrial Engineering Study Programme, UIN Sultan Syarif Kasim, Indonesia
- Dr. M. Shamsuzzaman, University of Sharjah, UAE
- Wan Nazdah Bte Wan Hussin, Universiti Teknologi Malaysia
- Ts. Rozaimi Bin Mohd Saad, Universiti Teknologi Malaysia

- Dr. Mohd Zamri Bin Mohd Yusop, Universiti Teknologi Malaysia

Undergraduate Research Competition Chairs

- Dr. Eko Liquiddanu, ST, MT, Head of Industrial Engineering Study Programme, Universitas Sebelas Maret, Surakarta, Indonesia
- Dr. Singgih Saptadi, ST., MT, Head of Industrial Engineering Study Programme, Universitas Diponegoro, Semarang, Indonesia
- Ts. Ir. Dr. Nor Hasrul Akhmal Bin Ngadiman, Universiti Teknologi Malaysia
- Dr. Mohd Azlan Bin Suhaimi, Universiti Teknologi Malaysia
- Dr. Nor Akmal Binti Fadil, Universiti Teknologi Malaysia

Lean Six Sigma Competition Chairs

- Dr. Dra. Hennie Husniah, M.T., Dean, Faculty of Engineering, Langlangbuana University, Bandung, Indonesia
- Dr. Dra. Amelia Santoso M.T., Head of Master Program in Industrial Engineering, Universitas Surabaya, Surabaya, Indonesia
- Assoc. Prof. Dr. Adnan Hassan, Universiti Teknologi Malaysia
- Ts. Dr. Muhd Ikmal Isyraf Bin Mohd Maulana, Universiti Teknologi Malaysia

Simulation Competition Chairs

- Nurhadi Siswanto, S.T., MSIE., Ph.D, Institut Teknologi Sepuluh November (ITS), Surabaya, Indonesia
- Dr. Rohaizan Ramlan, Universiti Tun Hussein Onn Malaysia

Supply Chain and Logistics Competition Chairs

- Dr. Azanizawati Ma'aram; Universiti Teknologi Malaysia

Human Factors and Ergonomics Competition

- Ing. Novie Susanto, S.T., M.Eng, Department of Industrial Engineering, Universitas Diponegoro
- Dr. Mohd Firdaus Bin Mohd Taib, Universiti Teknologi Malaysia
- Dr. Rozlina Bte Md. Sirat, Universiti Teknologi Malaysia

Poster Competition Chairs

- Dr. Indri Hapsari, S.T., M.T., Head of Industrial Engineering Study Programme, Universitas Surabaya, Surabaya, Indonesia
 - Dr. Henny, ST., M.T., Head of Industrial Engineering Study Programme, Universitas Komputer Indonesia, Bandung, Indonesia
-

Global Engineering Education Committee

- Dr. Abu Masud, Boeing Global Engineering Professor, Industrial and Manufacturing Engineering Department, Wichita State University, Kansas, USA
- Dr. Hamid Parsaei, Texas A&M University (College Station) and Qatar
- Dr. Mukondeleli Grace Kanakana, University of South Africa
- Dr. Syed Ahmad Helmi Al Haddad, Associate Fellow, Center for Engineering Education (CEE), Universiti Teknologi Malaysia, Skudai, Johor, Malaysia
- Dr. Mehmet Savsar, Professor, Department of Industrial and Management Systems Engineering, Kuwait University, Safat, Kuwait
- Dr. Vitor M. Caldana, Professor, Depto. de Eletroeletrônica, IFSP – Instituto Federal de São Paulo – Campus Sorocaba, SP, Brazil
- Associate Professor Dr. Jafri Mohd Rohani, Universiti Teknologi Malaysia
- Dr. Chan Chee-Ming, Associate Professor and Deputy Dean (Academic and Research), Universiti Tun Hussein Onn Malaysia
- Dr. Ilham Kissani, Faculty of Engineering & Management Science, Al Akhawayn University, Ifrane, Morocco
- Dr. Ho Hwi Chie, Bina Nusantara University (Binus), Indonesia
- Dr. Rosemary Seva, De La Salle University – Manila, Philippines
- Dr. Jihong Yan, Professor in Industrial Engineering and Deputy Dean of School of Mechatronics Engineering, Head of intelligent Manufacturing Scientific Research Team, Harbin Institute of Technology, Harbin, China

Industry Solutions Committee

- Natasha Dzulkarnain, Construction Research Institute of Malaysia
- Dr. Kenichi Funaki, Hitachi, Yokohama, Japan
- Ihfasuziella Ibrahim, Construction Research Institute of Malaysia (CREAM)
- Hwa Kooi Kok, Intel Malaysia
- Masaru Tezuka, Hitachi Solutions East Japan, Ltd., Japan
- Dr Edly Ferdin Ramly, EFR Certification, Johor, Malaysia

Woman in Industry and Academia (WIIA) Committee

- Dr. Chan Chee-Ming, Associate Professor and Deputy Dean (Academic and Research), Universiti Tun Hussein Onn Malaysia
- Dr. Stefanie Pillai, Dean and Associate Professor, Faculty of Languages & Linguistics, University of Malaya, Kuala Lumpur, Malaysia
- Dr. Adibah Shuib, Head of Strategic Planning (Monitoring), Centre for Strategic Planning, Universiti Teknologi MARA (UiTM)
- Associate Professor Dr. Aini Zuhra Binti Abdul Kadir, Universiti Teknologi Malaysia

Technical Committee

- Dr. Arundhati Guha Thakurta, Ergonomics and Human Factors Specialist, Assistant Professor, School of Design (SOD), Narsee Monjee College of Management Studies (NMIMS), Mumbai, India
- Dr. Javad Khamisabadi, Islamic Azad University, Tehran, Iran
- Dr. A.O. Adewumi, University of KwaZulu-Natal, South Africa
- Dr. Abdelaziz Berrado, The Ecole Mohammadia d'Ingénieurs (EMI), Rabat, Morocco
- Dr. Aidin Delgoshaei, Industrial Engineering Department, Kharazmi University, Tehran, Iran
- Dr. Abderrahmane Mellak, University of Boumerdes, Algeria
- Dr. Abdollah Aghaie, K.N. Toosi University of Technology, Iran
- Dr. Abdul-Rahman Al-Ali, American University of Sharjah, UAE
- Dr. Abdussalam Shibani, Coventry University, UK
- Dr. Ahmed Kadhim Hussein, Babylon University, Iraq
- Dr. Amir Azizi, Universiti Malaysia Pahang, Malaysia
- Dr. Andi Cakravastia, ST, MT, Institut Teknologi Bandung, Indonesia
- Dr. Anwar, Universitas Malikussaleh, Aceh, Indonesia
- Dr. Arun N. Nambiar, California State University – Fresno, USA
- Dr. Balan Sundarakani, University of Wollongong in Dubai, UAE
- Dr. Behnam Bahrami, Eastern Mediterranean University, Famagusta, Cyprus
- Dr. Bhuvanesh Rajamony, University Malaysia Perlis (UniMAP), Malaysia
- Dr. Brigitte Jaumard, Concordia University, Canada
- Dr. Carles Sitompul, Universitas Parahyangan, Bandung, Indonesia
- Dr. Cecilia Nembou, Divine Word University, Papua New Guinea
- Dr. Faieza Abdul Aziz, Universiti Putra Malaysia, Selangor, Malaysia
- Dr. Fernando González Aleu, Universidad de Monterrey, Mexico
- Dr. Francis Leung, City University of Hong Kong, China
- Dr. Fulufhelo Masithulela, University of South Africa
- Dr. Gopalan Srinivasan, University of New Brunswick, Canada
- Dr. Haider Ali Biswas, Khulna University, Bangladesh
- Dr. Hui-Ming Wee, Chung Yuan Christian University, Taiwan
- Dr. Indra Gunawan, The University of Adelaide, Australia
- Dr. Ing. Novie Susanto, ST, M. Eng, Universitas Diponegoro, Indonesia

- Dr. Ir. Rakhma Oktavina, MT, Universitas Gunadarma
- Dr. Ir. Rosnani Ginting, MT, Universitas Sumatera Utara, Medan, Indonesia,
- Dr. Jahara bint Ghani, UKM, Malaysia
- Dr. Jayakanth Srinivasan, MIT Sloan School of Management,
- Dr. Kannan Govindan, University of Southern Denmark, Denmark
- Dr. Kondo H. Adjallah, Paul-Verlaine University, France
- Dr. Lamto Widodo, ST., MT, Universitas Tarumanegara, Jakarta, Indonesia
- Dr. Linda L. Zhang, IESEG School of Management, Lille-Paris, France
- Dr. Mahdi Bashiri, Shahed University, Iran
- Dr. Mahmood Shafiee, Cranfield University, Bedfordshire, United Kingdom
- Dr. Maruf Hasan, University of New South Wales, Australia
- Dr. Md. Abdus Samad Kamal, Gunma University, Kiryu, Japan
- Dr. Md. Mamun Habib, Independent University, Bangladesh
- Dr. Md. Mizanur Rahman, Universiti Malaysia Sabah (UMS), Kota Kinabalu, Sabah, Malaysia
- Dr. Mehran Doulat, Center for Quality and Sustainability, School of Engineering and Advanced Technology, UTM Kuala Lumpur, Malaysia,
- Dr. Meilita Tryana Sembiring, ST, MT, Universitas Sumatera Utara, Medan, Indonesia
- Dr. Michael Mutingi, University of Botswana, Botswana
- Dr. Miguel Sanz Bobi, Comillas Pontifical University, Spain
- Dr. Mohammad Ishak Desa, Universiti Teknologi Malaysia, Johor Bahru, Malaysia
- Dr. Mohd Abdur Rashid, University Malaysia Perlis (UniMAP), Malaysia,
- Dr. Murat Caner Testik, Hacettepe University, Ankara, Turkey
- Dr. Nani Kurniati, Institute of Technology Sepuluh Nopember (ITS), Surabaya, East Java, Indonesia
- Dr. Naniek Utami Handayani, S.Si, MT, Universitas Diponegoro, Semarang, Indonesia
- Dr. Nejib Chouaibi, Polytechnic School of Tunisia, Tunisia
- Dr. Norhamidi Muhamad, UKM, Malaysia
- Dr. Norzaidahwati Zaidin, Universiti Teknologi Malaysia, Johor, Malaysia
- Dr. Nubia Milena Velasco Rodriguez, Universidad de Los Andes, Colombia
- Dr. Omar Elmabrouk, Benghazi University, Libya
- Dr. P. Sanjeevikumar, CTiF Global Capsule, Aarhus University, Denmark
- Dr. Raja Kothandaraman, Alpha College of Engineering, Chennai, Tamilnadu, India
- Dr. Raja Zuraidah Raja Mohd Rasi, Universiti Tun Hussein Onn Malaysia
- Dr. Ramy Harik, University of South Carolina, USA
- Dr. Rashmi Jha, Gitarattan International Business School (GIBS), Affiliated to Guru Gobind Singh Indraprastha University, New Delhi, India
- Dr. Ratri Parida, National Institute of Construction Management and Research (NICMAR), Pune, Maharashtra, India
- Dr. Ravi Gor, St. Kabir Institute of Professional Studies, Ahmedabad, India,

- Dr. Rina Fitriana, ST, MM, IPM, Department of Industrial Engineering, Universitas Trisakti, Indonesia
- Dr. Rodrigo Garrido, Universidad Adolfo Ibaez, Chile
- Dr. Ruchi Mishra, Institute of Management, Nirma University, Ahmedabad, India
- Dr. Salah Haridy, Department of Industrial Engineering and Engineering Management, University of Sharjah, Sharjah, UAE
- Dr. Sarbjit Singh, National Institute of Technology, Jalandhar, Punjab, India
- Dr. Sawat Pararach, Thammasat University, Thailand
- Dr. Shahrul B. Kamaruddin, Universiti Sains Malaysia
- Dr. Shahryar Sorooshian, University Malaysia Pahang, Malaysia
- Dr. Suat Kasap, Industrial Engineering, American University of the Middle East, Kuwait
- Dr. Suhaiza Hanim Zailani, University Malaya, Malaysia
- Dr. Syed Asif Raza, Qatar University, Qatar
- Dr. T. Ramayah, School of Management, Universiti Sains Malaysia
- Dr. Tanika D Sofianti, Industrial Engineering Dept., Engineering Faculty, Swiss German University BSD City Kav. Tangerang, Banten, Indonesia
- Dr. Theodore B. Trafalis, University of Oklahoma, USA
- Dr. Titah Yudhistira, ST, MT, Institut Teknologi Bandung, Indonesia
- Dr. Vassilis Gerogiannis, Department of Project Management, Greece
- Dr. Vladimir Beresnev, Sobolev Institute of Mathematics, Russia
- Dr. Vladimir I. Tsurkov, Russian Academy of Sciences, Moscow, Russia
- Dr. Vladimir Modrak, TUKE, Slovakia
- Dr. Yong Yin, Yamagata University, Japan
- Dr. Yosi Agustina Hidayat, ST, MT, Institut Teknologi Bandung, Indonesia
- Dr. Yuan Xue Ming, SIMTech: Singapore Institute of Manufacturing Technology, Singapore
- Dr. Zuraidah Sulaiman, Universiti Teknologi Malaysia (UTM), Johor, Malaysia
- Dr. D. K. Banwet, IIT-Delhi, India
- Eko Setiawan, ST, MT, Ph.D, Universitas Muhammadiyah Surakarta,
- Jonrinaldi, ST, MT, Ph.D, Universitas Andalas, Padang, Indonesia
- Markus Hartono, S.T., M.Sc., Ph.D, CHFP, Universitas Surabaya, Indonesia
- Nurhadi Siswanto, S.T., MSIE., Ph.D, Institut Teknologi Sepuluh November, Surabaya, Indonesia
- Prof. Dr. Anand Kumar, M.S. Engineering College, Bangalore Karnataka, India
- Dr. Taufiq Immawan, S.T., M.M., Department of Industrial Engineering, Universitas Islam Indonesia, Yogyakarta, Indonesia
- Dr. Ir. Halim Mahfud, M.Sc, Department of Industrial Engineering, UPN Veteran Jakarta, Indonesia
- Yun Arifatul Fatimah, M.T., Ph.D., Department of Industrial Engineering, Universitas Muhammadiyah Magelang, Indonesia, Yogyakarta, Indonesia

- Andi Sudiarso, S.T., M.T., M.Sc., Ph.D. Universitas Gadjah Mada (UGM), Yogyakarta, Indonesia
- Dr. Arian Dhini, ST, MT., Dept. of Industrial Engineering Universitas Indonesia
- Dr.Eng. Ir. Irma Nur Afiah, ST.,MT.,IPM.,ASEAN Eng. Department of Industrial Engineering, Universitas Muslim Indonesia, Makassar, Indonesia
- Dr. Wahyuda, Dept. of Industrial Engineering, Universitas Mulawarman
- Dr. Ir. Adrian Nur, S.T., M.T., University Centre of Excellence for Electrical Energy Storage Technology, Universitas Sebelas Maret, Surakarta, Indonesia
- Dr. Eng. Hendri Widyandari, University Centre of Excellence for Electrical Energy Storage Technology, Universitas Sebelas Maret, Surakarta, Indonesia
- Retno Tanding Suryandari, Ph.D., Master in Management (MM) Study Program, Universitas Sebelas Maret, Surakarta, Indonesia
- Didiek Sri Wiyono, ST, MT, Ph.D, Department Computer Science, Universitas Sebelas Maret, Surakarta, Indonesia
- Dr. Fethma M Nor, Department of Mechanical Engineering, Curtin University, Malaysia
- Assoc. Prof. Ts. Dr. Muhammad Azizi Mat Yajid, Director (Materials, Manufacturing & Industrial Engineering, Universiti Teknologi Malaysia, Malaysia
- Dr. Auditya Purwandini Sutarto, S.T., M.Si., Department of Industrial Engineering, University of Qomaruddin Gresik, Indonesia
- Dr. Leo Aldianto MBA, MSAE, School of Business and Management, Institut Teknologi Bandung, Indonesia
- Abroon Qazi, Ph.D., Fellow Society of Actuaries | Chartered Enterprise Risk Analyst, Assistant Professor, Department of Marketing & Information Systems, School of Business Administration (AACSB accredited), American University of Sharjah, United Arab Emirates

Table of Content

3rd Asia Pacific Conference on Industrial Engineering and Operations Management, Johor Bahru, Malaysia, September 13-15, 2022

Title	Page
Title	ii
Masthead	iii
Welcome	v
Committee	vi
Table of Content	xxii
The Development and Validation of a Mathematical Model of Output in A Manufacturing System	1
Development and Validation of a Production Planning Model for Throughput Shortage Recovery Through Process Parameter Adjustment in Manufacturing Industry	13
Reliability Analysis of Covid-19 Risk Management System in Malaysia Higher Learning Institution	15
Optimization of Humanitarian Logistics Distribution Routes in East Jakarta	27
Improving Industrial Engineering Student' Soft Skill Using Project-based Learning (PjBL) Method	40
Determination of Flood Logistics Command Posts and Humanitarian Logistics Vehicles in Jakarta	50
The Application of Student-Centred Learning Method in Theory-based and Studio-based Online Courses.	69
Digital Entrepreneurship Education in The Vocational School	77
Digital Food Marketing: Challenger for Vocational School	81
The Mediating Role of Attitudes toward usage on Consumers' Intention to Use the Traveloka (E-Commerce) Pay Later Application	83
Techno Economic Study on Improvement of Slaughterhouses by Considering Sensitive Analysis and Exchange Rate	94
Factors Affecting Intention to Use on the Digital Banking Services Offered by Digital Banks in Indonesia	105

Factors that Influence Successful Technology Commercialization	118
Improve E-Learning Ecosystem with Big Data in Higher Education	130
Modelling The Combined Effect of Indoor Environmental Condition on Neurobehavioral Trends of Individuals Through Electrocardiogram	138
Factors That Influence Students in Choosing a Career AS A Public Account	145
Recommendation of the Best Majors in Higher Education for Students Career with Big Data	154
Facility Layout Improvement for Erul Food Industry: A Simulation and Comparison	160
Analysis of Continuous Vibration Monitoring on Frequency Domain Using Various Sensors	172
Decision Support System to Help Educational Institutions Determine the Best Learning Method	191
Implementation of Agile Manufacturing in the Shipbuilding Industry: Challenge and Recommendation	199
Comparison of Three Excellence Models (DP, MBNQA, EFQM) in The Indonesian Context: Literature Study	209
Redesigning Spring Beds Production Line With Systematic Layout Planning Method and Promodel Simulation	210
Analysis of Raw Material Planning with Optimal Cost Consideration Using Safety Stocks, Material Requirement Planning, and Lot Sizing Methods at Plastic Jar Company	224
Development of Factorial Validation for Emotional Intelligence Competency Scale as Skills for Employment of Technical Education in Northern Nigeria	237
A Mathematical Modelling Approach for a Sustainable Closed Loop Supply Chain Network Design	247
Church Ministry Portfolio Management for Improved Operations through Proper Resource Allocation	248
Staff Competence Model in Implementation of Quality Management 4.0 at Telecommunications Industry: Literature Review	264
Customer Satisfaction and Loyalty Towards Online Food Delivery Services in Indonesia: A Conceptual Model of P-SERVQUAL 4.0	266
Factors Combination Affecting Borobudur Temple Visitor's Satisfaction in Indonesia during Covid-19 Pandemic and New Normal Era	272
Literature review of the Internet Provider Service Quality based on Sentiment Analysis	283
A Resource Allocation Model for Higher Education Based on The Combination of Efficiency Measurement and Market Position Mapping	291
Analysis of Driving Factors for Used Cooking Oil Management in Catering at Yogyakarta City	304
Integration of Smart Logistic and Crowd shipping for Sustainable City Logistic	314

Enhancing Job Satisfaction and Organizational Citizenship Behavior of Interns in Indonesia	329
Assessing E-Customer Loyalty in Relation to Customer Satisfaction during COVID-19 Pandemic using M-S-Qual Model	341
Creating a New Motorcycle Seat Design with Sorbothane Insert using MSCQ, QFD and 3D Modelling to Reduce Motorcycle Riding Discomfort and Vibration Exposure	354
Strengthening Entrepreneurial Ecosystem to Achieve Sustainability Through Digitalization and Innovation: A Case of Indonesian MSMEs Ecosystem	373
The Integration of AHP and SAW Methods with Multiple Decision-Makers for Supplier Selection. A Case Study of UD BSA, Surabaya	386
Causal Model for Evaluating the Performance Technological, Organizational, Capacity and Financial when Developing Suppliers	397
Industry 4.0 Practices of Turkish Companies: A Qualitative Research	408
Recommendation System for Matching Patients and Doctors in Telemedicine Based on Hybrid Filtering	420
Improving Knowledge of COVID-19 for Elementary School Students using Gamified Software	432
Gamification of STEM-based Evaluation Software on Online Learning for Elementary School Students	444
Systematic Literature Review: Comparison Analysis of Online and Offline Shopping	456
Predictive Maintenance in Bearing Production based on Machine Condition and Product Quality Data using Machine Learning Approach	465
Business Feasibility Study of Portable Washbin Products for Public Facilities	467
Integration of Life Cycle Sustainability Assessment and Material Circularity Indicator for Circular Business: Case Study of Company XYZ Jakarta	481
Green Lean Six Sigma Implementation Framework: A Case Study of Indonesia Tapioca Flour Industry	493
The Impacts of Successful Entrepreneurial Stories on Ideas Generation	502
Inhibiting Factors in the Idea Search Process for MSMEs	503
Creative Tools Used by Young Entrepreneurs	504
Influential Medium in Facilitating Idea Processing	505
Inspirational Figures for the Ideas Generation Process	506
Quality Control Analysis of Conveyor Production in Curing Machine with Statistical Process Control	507
Habit Tracker Gamification Software Development in Community-Based Daily Personal Hygiene Using Octalysis Framework	515

The Impact of COVID-19 Pandemic on E-commerce Firms: Data Mining for the Provinces in Indonesia	525
Optimization of Thermal Distribution in Masin Fermenters Using Computational Fluid Dynamic Method with Ansys Software	538
Intelligent Control Masin Fermentor Development With Temperature Control System	548
Further Study on an Electric Bike Using a Cycling Posture Analysis, Universal Design, And Finite Element Simulation	557
Design Of Masin Maker Based On Work Posture Analysis, Kansei Engineering And Value Engineering	572
Relationship Between 5S And Good Manufacturing Practices And Their Economic Benefits	583
Feasibility Study on Improvement of Investment Lithium Batteries by Considering Depreciation and Income Tax	594
Improvement of ERP Case Study Considering Sensitivity Analysis: A Techno-economic Study	604
Lean Manufacturing Approach using SMED Method and Value Stream Mapping on The Spring Beds Production Floor	613
Decision Support System Model to Support The Selection of The Best Supplier for Small Medium Enterprise Supply Chain Management	627
Employee Performance in Qualitative Analysis at a Natural Gas Distribution Company	634
Prediction Of Heart Disease Risk Based on Geographic Variables Using Decision Tree	644
Systematic Literature Review: Employee Empowerment in Indonesia's Hotel Industry	654
Life Cycle Assessment Using Supply Chain Strategy On Palm Oil Agro-industry	664
Product Design and Business Feasibility Analysis of Extendable Chair	673
The Influence Of Driving Duration And Driving Shift On The Level of Fatigue And Stress On Bus Drivers P.O Taruna Jaya Of Sumbawa-Taliwang	687
Supply Chain Resilience Framework for Covid-19 Pandemic Era	698
Is The Mastery of Work Enough? A View of Public Service Sectors in Greater Jakarta	699
Relationship Between Kaizen, Employees Work and Quality of Service A PLS-SEM Approach	707
Investment Feasibility Analysis Addition of Painting Machine CV. Creative 71 considering Taxable income and Price Changes	719
Investment Feasibility Analysis Addition of CV. XYZ New Milling Machine by Considering Price Changes and Sensitivity Analysis	731
Problems and Solutions, Quality Management Systems in Startups Business	743

Improving the Quality of Electric Bicycle Production During the Covid-19 Pandemic using the FMEA Method	752
Lean Six Sigma as A Strategy for Increasing Knitting Manufacturing Profitability Through Fabric Quality and Work Efficiency Improvement	760
A Systematic Literature Review: Identification of Transformational Leadership and Trust in Leadership on Increasing Organizational Work Engagement	772
The Influence of Gender and Majors on Students Motivation to Learn During Pandemic of Covid-19 (Case Study of High School Students in Indonesia)	781
Production Planning, Inventory and Capacity in PT. WDY and ERP Simulation Open Source	792
Lean Maintenance Implementation to Analyze Overlock Machine Maintenance at PT Xyz	805
Quality Improvement of Tix.id Application During Covid-19 Pandemic Using Gap Analysis, and Quality Function Development (QFD) Method by Using House of Quality (HOQ)	819
The Sentiment Analysis of User Perception on The Peduli Lindungi Application Using Support Vector Machine Algorithm	832
Monitoring Working Hours of Nurses at Azra Hospital Using Smartphone Based Geofencing	843
The Sentiment Analysis of Online Customer Review on Food and Beverages Delivery Services in the GOJEK Application Using K-Nearest Neighbors	854
Vocational School Student' Perception on Plastic Waste Management: the role of Recycling Education	863
Exploring The Financial Management Practices on The SMEs Business Performance	870
Determinants of Mobile Banking and Its Implication for Intention to use	881
Implementation of The Decision Tree Method in The Textile Industry: A Systematic Literature Review	897
Innovation management theory: Current trends and implementation	899
Prediction of Raw Material Purchases using The Weight Moving Average and Double Exponential Smoothing Methods at CV. Sukses Jaya Putra	908
Malware Detection using Portable Executable Header and Gradient Boosting Classification Algorithm	916
BuSia: Mobile Apps Design to Promote MSMEs Fashion in Indonesia	925
Visual Concept of User Interface Design for Depression Treatment Mobile Apps	933
The Implementation of Eco-Friendly Packaging Design for Cafeteria	934
A Cloud Data Lakehouse-Based AI Diagnostic Solution for Small and Medium-Sized Health Facilities	945
Investigating the Impact of Leadership Styles on Employee Loyalty and Turnover Intention at PT Bank XYZ, Indonesia	957

Determining Synonymy of Risk and Priority in Maintenance Prioritization.	969
Stock Price Volatility Behavior in Indonesia Stock Exchange	978
Aircraft (Dornier 328) Tire Wear Reduction Using Six Sigma and DMAIC Methodology	979
Car Creditworthiness Classification Using Naive Bayes and Credit Scoring	992
Sentiment Analysis Of E-Wallets on Twitter social media With Naïve Bayes and Lexicon-Based Methods	1002
The Influence of Company Growth, Management Change, Audit Report Lag, and Financial Distress on Auditor Switching (Empirical Study in the Infrastructure, Utilities, and Transportation Sector 2016-2020)	1011
Gamma Regression for Modeling the Education Index of Cities in Java	1019
Disaster Management Mitigation Using Geofencing Concepts in West Bandung Regency, Indonesia	1028
Internet Financial Reporting: In the case of district and city governments in Central Java Province, Indonesia	1039
Backpropagation Neural Network and Exponential Moving Average Methods for Predicting Currency Exchange Prices on Foreign Exchange	1048
NFT Coin Price Prediction (Non-Fungible Token) Using K-Nearest Neighbors Method	1054
Mapping the Business Model Canvas as a Basis for Creating New Value for Eco-print Craft in the Fashion Industry	1061
Quality Improvement and Waste Minimization in The Production Process of 450 MM Jacking Pipe Using the Lean Six Sigma Method	1069
The Use of Synchronization Technology on The Effort of Minimizing Medication Non-Adherence	1083
Classification System for the Level of Spread Covid-19 Cases in Bandung Regency Using the Naive Bayes Method	1091
Does Service Climate Matters for Supply Chain Resilience and Performance of Logistics Service Provider?	1101
Chatbot In The Selection Of Outpatient Ward In Hospital Using C4.5 Algorithm	1110
Interactive Media to Maintain Normal Sugar Levels for Diabetics By Using The Design Thinking Method	1120
Audit Quality: Audit Tenure, Audit Fee and Client Importance of Infrastructure, Utilities, and Transportation Sector in Indonesia	1129
The Influence of Travel Website towards the Decision-Making: A Case on Trip Advisor	1138
Determinant of the Fraud Pentagon Theory for Fraudulence Financial Reporting	1148
The Impact of Online Learning on Student Engagement in English Language Learning	1159

Building team resilience in Project Management – A comparative study between construction and ICT industries	1169
The Effect of Work-Life Balance and Work Engagement on Turnover Intention on Millennial and Z Generation in Indonesia	1176
Factors Affecting the Performance of Stock Investment in Jakarta	1183
Indonesian Millennial Generations' Financial Literacy in Relation to its Behavior in Investment Decision	1196
The Influence of Promotion and Ease of Perception on Internet in Using Digital Wallets With Pocket Money as Moderation Variable in Jabodetabek	1208
“Use of The Scrum ban Methodology to Improve the Efficiency of Financial Planning in Business Management: Bibliometric Analysis (2015-2021)”	1222
Fostering Innovative Behaviour Among Millennial Workers	1236
Analysis of The Impact of Inconsistency 5S Implementation Inconsistency in Japanese Companies in Indonesia; Case Study At PT Indonesia Toray Synthetics	1245
Financial Performance Analysis Using the Du Pont System Method: A Case Study	1256
Financial Performance Analysis and Business Strategy using Profitability Ratio Analysis: A Case Study	1266
Performance Analysis and Business Strategy using Economic Value Added (EVA) Method: A Case Study	1274
Evaluation of Financial Performance and Business Strategy at the Ministry of Religion Employee Cooperative	1286
Design of Work Facilities in Warehouses and Work Stations for SME Dwarr Leather Cutting Leather	1296
Agreement Level Among Online Investors in Indonesian Stock Exchange	1307
The Moslem Society Perception on The Importance of Korean Food's Halal Status and Its Nutritional Value: A Descriptive Study	1317
The Analysis of Coffee Shop Customer Loyalty in Jakarta Metropolitan Area During the Covid-19 Pandemic	1326
The Continuous Auditing and Possibility on Implementation; A Case Study in Local Accounting Public Firm in Indonesia	1338
Blockchain in the Natuna Tourism Industry: Opportunity and Challenges	1340
Transforming Indonesia Chinese descendants in Indonesia's cultural features into modern product design: A case study of a cross-cultural product design model	1349
Industrial Revolution 4.0: Innovation of Mandarin Language Students Learning Outcomes	1357
The Role of Cross Culture Knowledge at Work	1367
The Influence of Employee Perceived CSR on Job Performance: through the mediation of Job Satisfaction and Employee Engagement	1377

Performance of E-Service Quality at Mutual Fund Portal in Indonesia	1390
The Design of the SMEs Digital Innovation Business Collaboration Model	1403
Hourensou Concept Implementation in Daily Operation Management in Japanese Company	1413
Effect of Ownership Structure, Profitability, and Liquidity on Risk Management Disclosure	1421
The Entrepreneurial Transformation Assessment: Case Study in a Private University in Indonesia	1431
Literature Review on Acceptance of Technology for Reducing Distracted Driving	1440
Impact of Electric Trucks and Setup Cost Reduction Investment on a Two-tier Supply Chain	1450
The Influence of Celebrity Endorsers to Investment Intention in Gen Z during Pandemic	1460
The Impact of Social Motives on Digital Ambidexterity among White-Collared Workers in Indonesia	1474
Cloud-Based Statistical Process Control Mobile Application Development For Smart Manufacturing	1483
Systematic Literature Review: Identification of Service Attributes Servqual that Affect Customer Satisfaction in Distribution Companies	1494
Reliability Management in a South African Railway Company	1500
Model for Data Training Judge's Decisions in Corruption Cases in Indonesia	1512
Factors Affecting Employee Performance When Company Adopting Work from Home Policy	1522
The Effect of Contribution Restaurant Tax, Advertising Tax, Hotel Tax, and Parking Tax on Local Revenue of Metro City in 2016-2020	1534
Hedging Decision: Growth Opportunity, Firm Size, and Dividend Policy (Study of BUMN Companies Listed on Indonesia Stock Exchange 2011-2020)	1545
The Influence of Intellectual Capital and Company Size On Financial Performance (Study on Banking Subsector Companies Listed on the Indonesia Stock Exchange in 2017-2020)	1556
The Functionalities and Technologies Trends in Developing Electronic Travel Aids for the Blind or Visually Impaired People: A Review	1564
Implementation of Risk Management in South African Manufacturing Firms	1577
A Literature Review on Quality Management in the Food Industry	1590
Digital Disruption: Bridge to Organizational Resilience	1602
Personal Protective Equipment for Health Workers from Virus Transmission: The Effect of Temperature of Working Environment on Physiological Responses	1610

International Labour Law Perspectives on the Metaverse	1624
Identifying the Integration of Confucianism into Chinese Corporate Culture: A Referential Review	1636
Share Ownership Structure and Its Implication towards Directors Independency in Conflict of Interest Transaction in Indonesia and Australia	1643
Analysis of Factors Affecting the Audit Quality, Financial Condition, Opinion Shopping, and Debt Default Against the Going Concern Audit Opinion Acceptance (Case Study on IDX Manufacturing Company in the Food and Beverage Sub-Sector of 2016-2020)	1645
Design And Test of Learning Effectiveness Using The “LeDu” Comic Media Application Prototype in Improving Chinese Learners’ Grammatical Competence	1663
Design of the “XingSong” Song-Based Learning Application Prototype and Its Implementation in Chinese Language Learning Activity	1671
Industry 4.0 and Last Mile Logistics, New Challenges and Approaches: A Bibliometric Review	1681
The Effect of Managerial Ownership, Leverage, And Intellectual Capital on Integrity of Financial Statement (Study of Transportation Companies Listed in Indonesian Stock Exchange 2017-2020 Period)	1692
Analyzing Factors Affecting Continuance Intention to Use E-wallet During Covid-19 Pandemic in Indonesia	1701
Comparative Analysis of Chinese and Indonesian State-Owned Enterprise Reform	1711
Renewable Energy Studies in Indonesia and Malaysia: state-of-the-art	1717
Implementation of Classkick Application As a Mandarin Learning Media	1727
Use of Artificial Intelligence Techniques in Supply Chain Risk Management	1734
Analysis of Non-Financial Factors on Timeliness of Financial Statement Submission (Study of Consumer Cyclical Companies Listed on Indonesia Stock Exchange 2016-2020)	1746
The Effect of Intangible Assets, Foreign Ownership, and Profitability on Indications of Transfer Pricing	1756
Estimating Project Costs and Time under Uncertainties: A Stochastic Model for Inflation and Supply Changes During and After the Covid19 Pandemic	1765
Effect of Liquidity Ratio, Activity Ratio, CEO Power and Economic freedom on Bond Rating (Empirical Study on Non-Financial Companies Rated by PT. Pemingkat Efek Indonesia 2016-2020)	1771
Analysis of The Effect of Web Design Quality, Sales Promotion, Order Fulfillment on Repurchase Intention with Customer Satisfaction as Mediating Variable on E-Commerce Marketplace Users in Jabodetabek	1782
A Comparative Study of Makeshift Rice Husks Fertilizer and Eggshells Fertilizer to Urea Fertilizer and No Fertilizer on Home-Based Sweet Potato (Ipomoea batatas) Gardening	1792
Legal Construction And Responsibility Of Teleconsultation Based Health Services	1804

Capital Structure Adjustment Speed in Indonesia Health Sector Companies	1811
The Urgency of Nominee Registration in The Capital Market (Comparative Study: United States of America)	1822
Development and Validating of Measuring Tools in Occupational, Safety and Health (OSH) Culture	1824
Declaration of Directors as an Alternative to Substitute for GMIS in Conflict-of-Interest Transactions: Comparative Study	1836
Regulation of Conflict of Interest Transaction and Implications for the Position of Independent Shareholders in the Indonesian Capital market	1838
Ranking University's Academic Departments Based on Research Performance: A Comparative Study of MCDM Methods	1848
The Influence of Macroeconomic and Microeconomic Factors On Stock Price	1857
Percentage of Free Float Value and Its Implications Towards Issuers' Obligations in Capital Market	1866
Occupational Health and Safety Risk Identification and Analysis of Warehouse in Distribution Sector post pandemic Covid-19	1868
Behavioral Intention in e-sports Spectators: SOR Model Implementation	1877
Does Intellectual Capital Affect Financial Performance? An Empirical Evidence from Financial Companies in Indonesia	1888
Priority in Safety Management System Using Decision-Tree Technique	1899
Innovation and Technology Readiness Level of Mobile Charging Station Swap Battery: A Conceptual Study	1906
Quality Control Analysis Using the Grey Failure Mode And Effect Analysis Method on a Electric Batik Stove (Case Study: CV. ABC)	1916
Electric Vehicle: A Bibliometric Analysis of Future Trends	1928
Broiler Chicken Weight Estimation Model Design Using Image Processing Approach	1936
Enterprise Resource Planning for Outsource Logistics Companies: A Systematic Literature Review	1943
Composition in Bankruptcy that Comes from Suspension of Debt Payment Obligations in The Verdict of Indonesian Supreme Court No.667	1951
The Influence of Trust to Digital Influencer and Digital Advertising Capabilities on Consumers Attitude toward Digital Advertising in COVID-19 Pandemic	1958
Determinants of Debt Policy: Building Construction Firms Listed in Indonesia	1967
Improving the Effectiveness of Rolling Stock Maintenance: A Systematic Literature Review	1977
Electric Vehicle Adoption Factors and an Ecosystem Conceptual Model	1986

Factors Influencing Motorcyclists' Intention in Violating Railway Crossings in Indonesia: A literature review	1998
Selection of Environmental Impact Reduction Strategies Based on Life Cycle Assessment (LCA) and Analytical Network Process (ANP): A Case Study of Wood Charcoal Industry in Indonesia	2012
The Effect of XBRL Technology, Dividend Payout Ratio, and Net Profit Margin on Manipulation of Financial Statement (Study on State-Owned Enterprises Listed on The Indonesia Stock Exchange for the 2018-2021 Period)	2024
Modelling A Sustainable Performance Framework for Agriculture Business in Malaysia: A Mediation-Moderation Model	2032
The effect of co-creation attitude, entrepreneurship self-identity on entrepreneurship intention based on service-dominant logic approach	2034
Development of an E-learning Platform Utilizing Virtual DOM and Base64 to Limit Internet Data Charges Incurred for the Department of Education Region III, Division of Pampanga.	2041
Legal Responsibilities of Peer to Peer Lending Company to Lender	2051
Systematic Literature Review: Aspects of Leadership in Total Quality Management Implementation	2052
Legal Protection for Sharia Capital Market Retail Investor	2065
Legal Protection and Fulfillment of the Rights of Persons with Visual Impairments in Banking Services in Indonesia	2067
Legal Protection of Customer's Personal Data in Internet Banking Services	2068
Audit Quality: Publication Age, Audit Fee, and Committee Meeting of Infrastructure, Utilities, and Transportation Sector in Indonesia	2079
Reveal Six Sigma Implementations in Indonesia Manufacturing Industries	2087
The Effect of Capital Intensity, Company Age, and Company Size on Tax Avoidance	2095
The Determinant Factors of Opti log Adoption on a Logistic Service Company in Indonesia: Literature Review	2101
Artificial Intelligence: Implementation in Legal Services (Comparative Study on China, United States and Indonesia)	2113
Joint Optimization of Item Location Assignment and Task Scheduling for Tier-to-Tier Shuttle-Based Storage and Retrieval System (SBS/RS)	2122
Predicting Patient Arrival Rates in a Multi-Specialty Outpatient Department	2134
The Portrait of Entrepreneurial Orientation Among Women Entrepreneurs in Greater Jakarta: A Rasch Model Approach	2143
The Influence of Korean Brand Ambassador on Hedonic Shopping Motivation moderated by Fanaticism toward Impulsive Buying Behavior in E-commerce	2152
Implementation of China's Cultural Policy through TV Drama as Public Diplomacy Practice	2165

The Comparative of Regulations About Online Gambling Between Indonesia, Malaysia, Singapore, And United Kingdom	2177
Lean methodologies in the global tourism sector: A literature review	2188
The comparative of Regulations About Violation of Decency on Electronic Media Between Indonesia, United States, England, and Canada	2199
The Urgence Of Regulation Of Outsourcing Crossborder In Indonesia. Comparison Study of The United States With Indonesia	2208
The Influence of Tax Minimization, Firm Size, Exchange Rate, and Multinationalism on Indication to Performs Transfer Pricing: Evidence from Manufacturing Companies Listed on the Indonesia Stock Exchange (IDX)	2210
Brand Trust and Electronic Word of Mouth in Skincare Product Online Channel	2222
Organizational Culture Assessment Instruments (OCAI) and Multi-Objective Optimization based on Ratio (MOORA) Approach to Reduce Financing Risk (Case Study: Islamic Rural Bank in Indonesia)	2230
A Literature Review on Digital Marketing Strategies and Its Impact on Batik SMEs After COVID-19 Pandemic	2244
Environmental, Social, and Governance (ESG) as Determinant for Competitive Advantage: A Bibliometric Analysis	2257
The Effect of Telework on Employee's Work-Life Balance In Japan During The Covid-19 Pandemic	2266
Mapping Maritime Logistics Collaborations in Fishing Industry: A Review of Literature	2278
Analysis of Onomatopoeia Translation Result on "Komi Can't Communicate Comic" Using Machine Translation	2290
Analysis of Japanese-Indonesian Translation Using Machine Translation	2299
The Influence of Profitability, Liquidity, Managerial Ownership, and Company Growth on Dividend Policy	2306
How Emotional Intelligence Influences Organizational Culture Thus Impact to the Job Satisfaction of Millennials Employee in Selected Automotive Industry in East Java	2314
Psychological and behavioral factors influencing the adoption of electric vehicles in Indonesia	2324
Efficient mat heuristic for solving the Multiple-Choice Knapsack Problem with Setup	2331
Implementation Of Know Your Customer (KYC) In Crypto Asset In Indonesia	2341
Investigating the Influence of Indonesian and New Zealand Cultures on Leadership Styles and Performance of Indonesian Food and Beverage Businesses in New Zealand	2351
East Asia Regional Economic Integration Through Digital Economy Front	2363
Analysis of Productivity Level at Airport Companies in Indonesia Using Malmquist Productivity Index (MPI)	2375

The Blockchain Technology Architectures to Improve the Value Creation of Crop Agriculture Supply Chain in Indonesia: A Literature-Based Overview	2386
The Effect of Village Official Competency, Community Participation, Information and Technology Utilization and Internal Control System on Village Fund Management Accountability (Empirical Study of Bangkarangan District, Tapin, South Kalimantan, Indonesia)	2401
Lobster Seeds Smuggling Management in Indonesia	2410
Implementation of Six Sigma to Increase Sigma Level: A Case Study of Food Industry	2411
Integrated Text Mining and Kansei Engineering Methodology for Excellent Amusement Park Services	2424
Location Optimization for Vaccination Centers of the Andean Region in Peru	2430
Legal Protection For Online Loan Companies For Debtors Risk of Default: Case Study of PT. Mitrausaha Indonesia Group (Modalku)	2443
How do Gender and Social-Interaction Environment Affect Fraud Perception?	2454
The Art and Science in Strategic Approach to Enhance Innovativeness and Performance in Financing Industry	2462
Analysis of Measurement and Supply Chain Risk Management Control Using House of Risk Method	2472
Systematic Literature Review: Implementation of Green Supply Chain Management in Manufacture Industry	2482
Examining the Relationship Between Social Media Influencer Impact on Purchase Intention Towards Fashion Industry	2483
Examining the Relationship Between Electronic Word of Mouth, Consumer Ethnocentrism, Brand Equity Towards Children's Local Fashion	2496
Piercing The Corporate Veil: Effectiveness Of Alter Ego And Instrumentality Legal Test	2510
Unsold inventory management and off-price retailers' selection for multiple items	2520
Reviewing Occupational Health and Safety in Recent Indonesian Film Industry	2532
Strategy to Achieve Soybean Price Stability: System Dynamics Approach (Study in Central Java Province, Indonesia)	2534
Dysergonomic Risk Management Model to improve welding productivity using the Nordic Questionnaire and the REBA and NIOSH methods: Case of the metal-mechanic sector in Lima, Perú.	2536
The Influence of Digital Marketing on the Student Recruitment Process in the Private Higher Education Sector in Perú	2547
Software development of applications oriented to phonological awareness in high school children: A systematic literature review	2558
Environmental Impact of Medical Waste Treatment	2570

An Investigation of The Sectoral Competitiveness in Mojokerto Regency Through Location Quotient and Shift Share Techniques	2579
Project Management Model Applying Agile, Design Thinking and Lean Methodologies for the Improvement of Customer Service in an Insurance Brokerage SME	2591
Knowledge Externalities as Commons for Innovation: A Critical Analysis of Public Expenditure on Education	2607
Risk Analysis and Mitigation in Supply Chain with House of Risk (HOR) Approach in Bag Manufacturing Industry at XYZ Ltd.	2621
Integrated Hyperledger Fabric Blockchain-Bim Model For Design Process Development Of Green Building	2633
Investigation of Power Factor Improvement for Non-Linear Furnace Inverter	2634
Utilization of the SAW Algorithm in Decision Support Systems for Determining Learning Strategies for Adaptive Learning	2644
Analysis of The Influence of Job Incesurity and Work Passion on Job Satisfaction in Outsourcing Employees	2656
Analysis of The Effect of Government Business Support Services And Absorptive Capacity Moderation on The SMEs Performance Using The Structural Equation Modeling (Case Study: STIP NTB Entrepreneurial Incubator)	2668
Development Of Sustainable Railway Transportation System For Kuala Lumpur	2682
Public-Private Partnership in the Provision of Street Lighting Equipment in Bandung City	2683
Quality Improvement And Waste Minimization With Lean Six Sigma Method In Cement Production Process At PT. C	2698
Temperature controls for plastic injection machine based on PID controller	2713
Extended Validated learning Concept and Business Model Canvas for Start-up Business to Increase The Knowledge with Knowledge Management System	2725
Factors Related to Active Learning: Perspective of Learning Technology Development	2732
Indonesian Adaptations of Paper-Based Methods and Instruments in Ergonomics: A Literature Review	2741
Exploring Concept Drift in Technology by Tweets Mining	2750
Co-Creation Analysis Business Virtual Account Product	2764
The Effect of Encoder and Decoder Stack Depth of Transformer Model to Performance of Machine Translator for Low-resource Languages	2766
IoT for Water Quality Categorization	2777
Automatic Lobster Feeder Based on Web Integrated with Internet of Things	2786

Tracking Javanese Cultural Heritage through Augmented Reality and its Implications in Indonesian Language for Foreign Speakers (BIPA) Learning	2798
Eden Eternal: Game Based on Candi Prambanan Indonesian Folklore	2810
The Effect of Gender Diversity, Profitability, and Leverage on Intellectual Capital Disclosure (Study of Banking Companies Listed in Indonesian Stock Exchange 2017-2020 Period)	2821
University Student's Tendency of Social Stigma Towards Coronavirus Disease in Digital Society (Indonesia and Japan)	2831
The Effects of Intellectual Capital on Financial Performance in Banking Industries during COVID-19 Pandemic (Evidence from Indonesia)	2838
Block Chain Adoption in The Vehicle Leasing Business to Increase The Transparency of Transactions	2851
Mobile Application Implementation as Agriculture 4.0 Strategy for Sugarcane Yield Prediction	2857
Learning Asian Languages Using Online Platforms during Pandemic Times: Evidence from Indonesian Youth	2865
Smart Mechanical Ventilation and Artificial Lighting Implementation in the Restroom for Energy Efficiency	2872
Building Younger Generations' Competency in Digital Age Through Experiential Learning Programs for Higher Education	2882
Indonesian Female Ambassadors and Twiplomacy	2890
Social Construct of Online Gender-Based Violence in Mainstream and Special Media in the Era of the COVID-19 Pandemic	2899
Investigating the Role of Tangible, Reliability, Responsiveness, Assurance, and Empathy to Consumer's Satisfaction: A Shoe Care Industry in a Covid-19 Pandemic Period	2909
Toward Optimum Transformer Model for Sequence-to-Sequence Data Transformation under Low-resource Computation Constraint	2914
Determinants of Dividend Policy on Indonesia Non-Family Companies Listed in LQ45 Index	2923
The Pain Level and Discomfort on The Lower Extremities of Body Part	2934
Factors that Drive the Adoption of Telemedicine in Older People	2942
Analysis of Determining the Optimal Route for 3 kg LPG Gas Distribution Using the Saving Matrix and Nearest Neighbor Methods (Case Study at PT. Rariza Putra)	2954
The Impact of Environmental Performance on Environmental Disclosure, moderated by Company Characteristics	2965
Immersive Technology Study As A Science Innovation to Enhance Modern Dining Experience	2979
Do Environmental Disclosure and Financial Distress Affect Firm Value? The Moderating Role of Market Capitalization	2987

Understanding Factors Affecting Investment Decision-Making During Pandemic	2999
Entrepreneurial Orientation and Business Sustainability of Indonesian Start-ups: Does Innovation Performance Matter as a Mediating Factor?	3012
Towards Integration of Truck Appointment System and Direction for Future Research	3022
Renewable Energy Directive II Impact on Combating Deforestation in Indonesia	3031
Adoption of Technology Capability Through Export and Foreign Ownership to Improve Firm Productivity: A Systematic Literature Review	3039
The Influence of Digital Business Strategy, Mental Accounting, and Growth Mindset on MSMEs Business Performance	3051
The Influence of Village Own – Source Revenues, Village Fund and Sharing Tax Results – Retributions on Village Expenditures (Case Study at Village in Batang District 2020)	3062
Developing Pion HydroFarm: A Hydroponic Garden and Minimarket Start-up	3071
Informality and technical efficiency in Morocco: lessons from Stochastic Frontier Analysis	3080
The Effect of Indonesian Government’s Communication Strategy During the Implementation of Emergency Public Activity Restriction on the Compliance Health Protocols in East Java	3094
The Non-Observed Economy in Morocco: Estimation, Evolution and Analysis	3104
A Comparison of Ant Colony Optimization and Depth First Search for Solving Unmanned Aerial Vehicle – Ground Vehicle Routing Problem in Humanitarian Logistics	3118
Wind Energy Application	3128
User Acceptance Analysis on Tele counseling App	3129
Increasing The Purchase Intention by Using E-Wom In F&B Products Among TikTok Users in Greater Jakarta & Tangerang	3139
Investigation and Prioritization of Delay Factors in Industrial Projects: A Best-Worst Method	3150
The Analysis of Programming Problem Solving Skill of the students in Software Engineering Vocational High Schools	3158
Examining the Moderating Effect of Price Sensitivity on the Relationship between Perceived Determinants and Intention to Purchase Green Products: Insights from Malaysian Consumers. A Conceptual Study	3168
Design of Pico Hydro Power Plant (PHPP) With Method Morphology Chart And Pugh Matri	3179
Development of Big Five Personality Traits Moderation That Affecting Safety Leadership, Safety Knowledge, and Safety Culture on Safety Performance Models to Reduce Accidents in The Chemical Industry	3186

A Heuristic Method for Measuring Material Procurement Progress in Industrial Projects	3196
Does Dynamic Capability Can Foster Innovation Performance on Viral Marketing? Case Study in Creative Industry	3209
AHP and PROMETHEE Comparison on Decision Support System for Scholarship Selection in Universitas Sebelas Maret Surakarta	3221
Organizational Culture through Technology Resources as Antecedents and its Impact on Export Performance of The Furniture Industry	3230
The Role of Entrepreneurial Orientation, Organizational Culture, and Technology Resources in Encouraging Supply Chain Management	3242
Defects Analysis of Printed Tissue Paper Products using Eight Disciplines Method (Case Study of PT IGP Internasional Sleman)	3251
Development of a low-cost GHI monitoring system based on IoT technology	3263
The Influence Of Service Quality And Price On Customer Loyalty Through Satisfaction Customer As An Intervening Variable On Telkomsel Card Users In Indonesia	3265
Influence of Product Quality, Price, and Promotion on Coffee Consumer Purchase Decissions Case Study: (Coffee Shop in Indonesia)	3276
Customer Satisfaction Analysis Based on Service Quality Method and Six Sigma-DMAIC (Case Study at Super Dazzle Yogyakarta)	3287
The Influence of Non-Physical Work Environment and Work Stress on Job Performance of Gen Z in Indonesia	3302
Building Brand Image through Instagram as A Key in Attracting Purchasing Decisions	3315
The Effect of Brand Awareness, Brand Image, and Perceived Quality on Customer Loyalty Through Customer Satisfaction	3321
Consumer Perceptions Analysis of the Influence of Product Quality, Price, Service Quality, and Social Media Promotion on the Purchase Decision of Device Accessories Using Multiple Linear Regression Method (Case Study: Dazzle Yogyakarta).	3330
Analysis of The Influence of Social Media Exhaustion on Lecturer Performance in Indonesia with Perceived Organizational Support Related to Technology and Technology Self-Efficacy as Moderators	3343
Adaptation Thresholds Method for Developing City's Carrying Capacity Model	3356
Cross-Industry Standard Process for Data Mining (CRISP-DM) Approach in Determining the Most Significant Employee Engagement Drivers to Sales at X Car Dealership	3368
The Role of Psychological Empowerment in Increasing Organizational Commitment	3380
Patient Brand Value Co-creation: A Conceptual Framework	3389
Assessing Furniture Brands in Marketing 4.0 for Green Supply Chain Management (GSCM) using Multi-Criteria Decision-Making (MCDM)	3397

Sustainable Development or Greenwashing: The Phenomenon of Corporate Social Responsibility (CSR) in Banking in Indonesia	3403
The Pleonasm in Strategic Initiation? Revisiting Concept, Content and Context	3418
How to Calculate the Expected Return on Real Estate Stocks	3428
A Review of Energy Community Innovation and Local Resources Utilization in Indonesia	3435
Using the Monte Carlo Method to Determine Value at Risk in Hotel Stocks	3444
Environmental Uncertainty, Innovation Efficiency, and Firm Performance: An Integrative Framework for Contingency Theory Approach	3453
Framework Development of Supply Chain Readiness 4.0 Measurement	3455
Digital transformation model to reduce release time of goods through the blockchain technology in a customs air: A empirical research in Perú	3466
Production Model Based On Lean Manufacturing And BPM To Reduce The Rate Of Returns In Smes Of Garment Printing	3478
Factors that contribute to the development and labor integration of people with disabilities (PwD) in industrial SMEs in Perú.	3487
Application of Best-Worst Method (BWM) in Prioritization of International Business Strategies	3497
Evaluating Service Quality of Multimodal Transportation: A Case Study of Adi Soemarmo International Airport	3505
The effect of Knowledge Sharing on Employee Performance in Work Training Development Center (BBPLK) Bandung Through Organizational Culture as Intervening Variable	3514
Lean Supply Chain Operational Model Applied to Halal Education Industry	3521
Implementing Ethical 'Code of Work Ethics': A Case Study of Apple and Foxconn Supply Chain	3535
Utilization of Virtual Reality Tours as Educational Media Introduction of "Bayt Al Qur'an and the Istiqlal Museum" for Students After the COVID 19 Pandemic	3546
The Effects Of Entrepreneurial Orientation, Entrepreneurial Value, Corporate Culture, And Information, Communication and Technology On Financial Performance At Rural Banks	3556
Indonesian Songket Virtual Exhibition as a Form of Digital Culture to Preserve the Heritage of Traditional Wastra	3569
Creating Legal Unity in a Rapidly Changing World: Indonesia and the Netherlands Compared	3576
The Influence of Green Education on Sustainable Mindset in Business English Class	3581
Renewable Energy Policy to Achieve Sustainable Development Goals in Indonesia	3591

Now that We are All Expert, What Do We Really Think about Online Class?	3601
The Role of Financial Technology Education Application on Financial Investment Decisions	3611
To Shoot or Not To Shoot: Health protocols in Indonesian Film Industry Thriving Sustainable Business during Pandemic	3619
Gender Sensitive Policies during COVID-19: Experience from Asia	3629
Art History towards Digital Acculturation in a Non-Fungible Token (NFT) Art	3638
Analysis Of Raw Material Cement to Minimize Inventory Costs Using the Material Requirement Planning Method at PT. XYZ	3646
Digitalization of Interior Materials as Sustainable Learning Process to Enrich Students' Material Knowledge	3655
Implementing Zero Waste Pattern Cutting for Sustainable Fashion Collection	3667
Strategy to Improve the Innovation Performance of Batik Industrial Cluster	3678
Readiness Assessment of the Sleman Regional Disaster Management Agency in Handling and Managing the Mount Merapi Disaster	3691
Lean Manufacturing to Improve the Efficiency in A Small and Medium Enterprise: Case in Tofu Production Processes	3703
Selection of the Best Supplier Criteria with the Analytical Hierarchy Process Method in the Construction Services Industry	3715
Eight Golden Rules in Asean Entrepreneurship Profiling Website Development	3726
Can Teacher Wellbeing Improve Teacher's Quality of Work Life	3728
Entrepreneurial Mindfulness Website: Building a Responsive Application	3730
Optimal performance of a stochastic repair and replacement model with imperfect Repairs	3732
Application of ABC Analysis to Control Inventory and Material Excesses of the Winston Rattan High back Armchair at PT Kharisma Rotan Mandiri	3740
Integration of Kraljic's Portfolio Model and Purchasing Price Assessment-DEA in Improving Procurement Efficiency	3754
The Effect of Gas Injection Duration on the Restart Pressure of Waxy Crude Oil Pipeline	3766
Application of Analytic Hierarchy Process (AHP) in Adoption of Quality Management System (QMS)	3775
Dynamic Balanced Scorecard Performance Analysis of Medical Device Distributor During the Covid-19 Pandemic Crisis	3785
Analysis of Intention Factors Joining Course Using Advertising social media	3795

Digital Competency, Self-Leadership, and Innovative Work Behavior towards Teacher Performance in Islamic Educational Foundation Samarinda Indonesia	3808
Utilization of EMG Signals Using Bitalino for Post Stroke Patients in Mapping Characteristics of Flexor Carpi Radialis Muscle	3821
Development Marine Tourism Strategic in Padang City, Indonesia: Importance Performance Analysis Approach	3830
Analysis of TIX ID Application User Satisfaction Reviewed from E-Service Quality Using Importance-Performance Analysis (IPA) Method	3831
Determination of Burn-in Period Based on Reliability Target for Product Failure Time with Weibull Distribution	3846
Proposed Solution to Optimize Production Cost in Fulfilling Domestic Market Obligations (Study Case: Coal Mining Company in Indonesia)	3858
Covid-19 Pandemic Impact on the Real Estate Industry: A Review of the Literature and Way Forward	3864
Consumer Preferences on Packaging Characteristics: A Case of SME Food Industry	3873
Adaptive Reuse the Old House into Restaurant: Space, Nostalgic, and Economic Value	3881
Supplier Performance Analysis in Food Industry: A Data Envelopment Analysis and Statistical Approach	3893
Social Media for Society 5.0: Nostalgia Function and Social Connectedness	3902
Trunk Injection as Green Technology to Improve Rubber Latex Production of <i>Hevea brasiliensis</i>	3910
Application of the Polder System in Flood Management in Urban Areas a Case Study	3919
Effect Digital Marketing and Product Quality to Purchasing Decision	3929
Quality Control Management with Six Sigma Approach to Minimize Defects in The Invitation Paper Production Process	3937
Risk Management and Control to Identify Potential Work Accidents in the Production Floor Area	3949
Work-Life Balance in Women Engineers	3961
The Role of System User Training and Personal Technical Skills to Improve Accounting Information System Performance	3971
Design Improvement Strategy of Operational Performance Loading Unloading Containers Using SWOT and ANP Methods	3979
The Role of Leaders during Organizational Change Caused by Covid-19 and Digitalization	3988
The Effect of Total Asset Turnover Ratio, Return on Asset, and Dividend Policy on The Investment Opportunity Set (IOS)	4002
The Role of Work Experience and User Capabilities in Improving Accounting Information Systems Effectiveness	4011

Investigating the Factors That Contribute to the Implementation of Business Intelligence in Non-Profit Organizations: A Case Study of Non-Profit Organization in Cianjur, Indonesia	4017
Continuing Use Behavior Analysis of MSMEs on the Mosan Digital Platform Using the UTAUT2 Model	4019
The Influence of Managerial Ownership, Sales Growth, Total Assets Ratio, and Premium Growth Ratio on Stock Price	4030
The Influence of Managerial Ownership, Independent Commissioner, Auditor Industry Specialization, and Profitability on Integrity of Financial Statements	4040
The Influence of Capital Structure, Capital Expenditure, and Independent Commissioner on Firm Value	4050
The Influence of Proper Rating, Industrial Type, Gender Diversity on Carbon Emission Disclosure (Case Study at LQ45 Companies Listed On The Indonesia Stock Exchange 2019-2021 Period)	4060
Assessing CSR Project Impact on Mangrove Community in Indonesia: Case Study	4070
The Influence of Fraud Hexagon Perspective on Fraud Financial Statement (Case studies on Manufacturing in the Chemical and Basic Industries Sub-Sector Listed on the Indonesia Stock Exchange for the Period 2019-2021)	4072
The Revolution of Female Characters in Disney Films	4082
The Influence of Financial Literacy, Risk Aversion, and Persuasion on Insurance Demand	4094
Analysis of Factors Affecting Profit Persistency	4104
A Scientometric Analysis: Big Picture of Innovation Process in Merger & Acquisition	4114
Impact of E-Audit on Public Organization's Performance in Oman	4127
Analysis of The Effect of Electronic Word of Mouth (E-Wom), Brand Image, Perceived Quality, And Customer Satisfaction in The Millennial Generation (Study in Finpay Money in Pt Finned Indonesia)	4136
The Quantum Dot-sensitized Solar Cells (QDSSCs): A Review on Recent Achievements (2010-2021)	4144
Public Awareness of the Automated External Defibrillators	4161
Productivity Analysis of Bulk Carrier Ship using American Productivity Center Method (APC) for Optimization Shipping Company in Surabaya, Indonesia	4167
Optimization of Shipping Services with Waste Analysis Using Lean Service	4179
The Effect of Debt Default, Activity Ratio, and Bankruptcy Prediction on Going Concern Audit Opinion (Study on Companies in the Retail Trade Subsector Listed on the IDX in 2016 – 2020))	4191
The Influence of Executive Characters, Leverage, and Managerial Ownership on Tax Avoidance (Empirical Study of Manufacturing Companies Listed on Indonesia Stock Exchange (IDX) in 2018-2020)	4200

The Effect of Fixed Asset Intensity, Institutional Ownership, and Audit Committee on Tax Avoidance (Study on Manufacturing Companies Listed on the Indonesia Stock Exchange (IDX) Period of 2016-2020)	4210
The Influence of Profitability, Leverage, and Institutional Ownership on Tax Avoidance (Study on Manufacturing Companies Listed on the Indonesia Stock Exchange (IDX in 2017-2020)	4220
Critical Success Factors for Lean Healthcare Implementation and Sustainable: A pilot study in Local Healthcare in Malaysia	4230
The Influence of Competence On Employee Performance With Demography As Moderating Variable At The Ministry Of Religion Of Sragen Regency	4241
A Critical Review on Thermal Simulation of LNG Driven IC Engines	4253
Development of Special Dowel Pin Puller for Dowel Pin Sink in The Flat Surface	4261
The Effect of Compensation and Organizational Culture on Employee Work Motivation at Grand Mercure Bandung Setiabudi	4269
Capital Intensity, Conflict of Interest, Litigation Risk, and Growth Opportunity as Determinants of Prudence	4278
Trend and Direction of Circular Economy Research in Indonesia	4289
Online Event Transformation; Integrated Channel Model in Event Management	4301
Drowsiness on Industrial Logistics Driver In the Morning and Afternoon Trip	4302
Factors Affecting the Use of Mobile Payments During the COVID-19 Pandemic	4310
The Effect of Work Training and Physical Work Environment on the Performance of Millennial Generation Employees (Case Study of BPJS Ketenagakerjaan, Regional Office of Sumbagut)	4323
The Effect of Sales Growth, Corporate Social Responsibility Disclosure and Transfer Pricing on Tax Avoidance (Case Study in The Mining Sector Listed on The Indonesia Stock Exchange 2016-2020)	4336
The Influence of Village Owned Enterprises (BUMDes), Village Funds, and The Professionalism of Village Asset Management on Village Original Income (Study on Village in Rembang District in 2022)	4348
Application of A Zone-Based System in A Short Film Production During Covid-19 Pandemic	4359
The Implication of e-Service Quality to Customer Satisfaction on Behavioral Intention in Pension Funds Digitalization Services	4370
The Influence of Trust, Message Content, and Recommendation on e-WOM Credibility and Its Impact on Purchase Intentions in e-Marketplace	4383
Comparative Analysis of the Effect of Live Streaming Shopping on E-commerce and S-commerce on Impulsive Buying Behavior in Indonesia	4396
Impact Of the Work Environment and Job Characteristics On Turnover Intention With Employee Engagement As Intervening Variable On Talent Millennial Generation In Indonesia	4408

Implementation of Digital Transformation in Student Organizations	4425
Factors Influencing Fresh Food Purchase Intention at Online Store on E-marketplace – A Mediation Effect of Online Trust in Store	4435
The Impact of Human Capital on Digital Literacy Index	4459
Use of Social Media through Digital Content Short Video for Advertising by Influencers or Brand Ambassadors	4474
e-HRM Adoption with Job Tenure, Gender, and Corona Fear as Moderating Variables Using UTAUT-1	4484
The Impact of Using Digital Banks on Gen Z Financial's	4496
The Influence of Institutional Ownership, Liquidity, and Risk Minimization on Corporate Social Responsibility Disclosure	4503
Integrated eco-design and ergonomic innovation into product design and development	4509
Analysis of Employee Competence and Job Satisfaction at The General Election Supervisory Agency (BAWASLU) during the Covid-19 Pandemic	4518
Social Return on Investment Analysis of Corporate Social Responsibility	4528
Plough Scraper and Tilting Device on Conveyor Belts	4530
Method of Operation of a Plough and Tiling Device Designed for Coal Mining	4542
YouTube as Capital Battle Arena in the Digital Age (Case Study of Top 10 Youtubers in Indonesia)	4553
The Use of Government Websites as a Digital Communication Media to Promote Tourism of Manggarai East Nusa Tenggara	4559
The Effect of Social Media Marketing towards Purchase decision mediated by Brand Awareness, and Willingness to Buy, and moderated by Income Level, and Educational Level	4560
Optimizing Electric Vehicle Charging Infrastructures: A Microscopic Review	4569
Representation of Intercultural Communication in Series "Emily in Paris – Season 1"	4577
Verbal Abuse and Gender Discrimination in a Work Environment (Semiotics Analysis of Short Film 'Please be Quiet')	4584
Effects of pH Level, Temperature in Fish Tank, and Temperature in Grow Bed on the Growth of Nile Tilapia and Romaine Lettuce in an Automated Aquaponics System	4594
Impact of Organizational Justice, Abusive Supervisor, and Self-Control on Cyberloafing Behavior During Covid 19 Pandemic with Work Stress as a Mediation Variable: Study on Travel Companies in South Jakarta	4606
Impact of Employee Training, Work Environment, Incentives, and Work Disciplines on Employee's Job Performance Through Mediating Role of Job Satisfaction During Covid 19 Pandemic: A Study on Logistic Companies in West Jakarta	4615

Capital Structure and Financial Performance of Banks in Indonesia	4626
Factors Influencing Consumer Online Shopping Behavior During National Online Shopping Day: Perspective of Indonesian Generation Z	4638
The Effect of Covid-19 Pandemic Cases and Stock Price Volatility to Stock Returns on the Indonesian Automotive Stock Market	4647
Workload Analysis using NASA-TLX and SWAT METHODS in Shop Floor Company X	4662
Statistical Analysis of Inference on Total Microbes in Hydrolyzed Bovine Collagen Milk with Different Pasteurization Treatments Using Pulsed Electric Field	4670
Student Perceptions of Blended Learning in Character Building Courses in Higher Education	4679
Overtime Work, Time Management, and Employees' Work-Life Balance (a Perspective from Employees at a Human Capital Division in a Bank in West Java, Indonesia)	4684
The Effect of Service Quality on Customer Satisfaction and Its Impact on E-Commerce Customer Loyalty	4693