

## Conference Paper

# Non-Suicidal Self-Injury in Those Dealing With Borderline Personality Disorder or Separation from Parents

Janice Valencia and Frikson Christian Sinambela

Master of Science Psychology, Universitas Surabaya, Surabaya, Indonesia

## Abstract

Non-suicidal self-injury (NSSI) is a deliberate destruction of one's own body tissue without suicidal intention that causes physical injury. NSSI is mostly found in adolescents or young adults (Paul, Tsypes, Eidlitz, Ernhout, & Whitlock, 2015). Borderline personality disorder (BPD) is one of the risk factors for developing NSSI. Individuals with borderline personality disorder also experience invalidation during their childhood, this can cause individuals with BPD to feel that they deserve to receive NSSI as a form of self-punishment (Sadeh et al., 2014). In addition, children who experience parental separation (through death, divorce or employment) have a higher risk factor for developing NSSI (Astrup, Pedersen, Mok, Carr, & Webb, 2017). A literature search was conducted in six databases, and a total of 20 relevant articles were found. The explanation of the relationship between non-suicidal self-injury, borderline personality disorder, and loss of or separation from a parent are explored in this study, in order to increase understanding of how NSSI behaviours can be prevented.

**Keywords:** NSSI, Borderline Personality, Separation Parent

Corresponding Author:

Janice Valencia

s154219006@student

.ubaya.ac.id

Published: 5 January 2021

Publishing services provided by

Knowledge E

© Janice Valencia and Frikson

Christian Sinambela. This article

is distributed under the terms of

the [Creative Commons](#)

[Attribution License](#), which

permits unrestricted use and

redistribution provided that the

original author and source are

credited.

Selection and Peer-review under

the responsibility of the ICoPsy

Conference Committee.

## 1. Introduction

Non-suicidal self-injury (NSSI) is a deliberate destruction of one's own body tissue without suicidal intention and not socially sanctioned behavior that causes physical injury. NSSI is mostly found in adolescents or young adults (Paul et al., 2015). Individuals who perform NSSI usually don't do just one method. NSSI can also be categorized based on lethality of the injury which can be mild, moderate, and severe. The most common method is self-cutting (cutting wrist, arms, or other parts of body). Inpatient with NSSI found it was difficult to be too aware of their mental states, emotions, desire and beliefs and physical sensations, to adapt to these and adopt effective strategies to achieve a desired state, that is, to reduce their psychological suffering (Laghi et al., 2016).

In Western countries, it was found that there was an increase in individuals who did NSSI, especially adolescents and young adults. Meanwhile, it was found in the United

 OPEN ACCESS

States that there were between 23% and 38% in community samples of young adults and adolescents who conducted NSSI (Lloyd-Richardson, Perrine, Dierker, & Kelley, 2007; Muehlenkamp, Brausch, & Washburn, 2017; Ross & Heath, 2002; Whitlock, 2006). There are 17.5% of adolescents and 13.4% of adults experience NSSI at least once in his lifetime. Adolescents and young adults who are still developing have a higher risk of NSSI behavior because there is still emotional disturbance in the development period, combined with the immature development of the regulatory system in the brain, so there is the possibility of increased impulsive behavior including NNSI (Martin et al., 2016).

Countries in Asia also have quite high NSSI numbers. 11% Chinese students (Tresno, Ito, & Mearns, 2012; Wong, Stewart, Ho, & Lam, 2007). and 7% of Japanese students have done NSSI (Tresno et al., 2012; Yamaguchi et al., 2004). In Indonesia alone, 38% of college students do NSSI, this is mostly done to women. Skin cutting is a common method for NSSI whereas wrist cutting is a common method for suicidal attempts which is followed by poisoning, jumping from a height, and overdosing (Tresno et al., 2012).

Individuals with borderline personality disorder also experience invalidating in their childhood, this can cause individuals with BPD to feel that they deserve to receive NSSI as a form of self-punishment (Spitzen et al., 2020). Self-conscious being one of the causes of the pathology borderline personality disorder that causes NSSI. There are also indirect relations to borderline personality disorder like negative relationship, affective instability, identity problems, and NSSI with the presence of NSSI and in the next 12 months of NSSI (Spitzen et al., 2020).

In a study conducted on female adolescents who performed NSSI, it was found that there were 51.7% with BPD criteria (Nock, Joinerjr, Gordon, Lloydrichardson, & Prinstein, 2006; Sadeh et al., 2014). It was also found that individuals with BPD have a higher risk of recurring the NSSI behavior. There are several factors that cause BPD to be strongly associated with NSSI and suicide attempts, this is due to chaotic relationships and history of suicide (Muehlenkamp, Ertelt, Miller, & Claes, 2011; Sadeh et al., 2014). Patients with BPD symptoms that can cause NSSI due to intrapersonal functions such as affect regulation and self-punishment. In the previous study also found that the BPD who carried out NSSI was because it was a form of self-punishment (Brown, Comtois, & Linehan, 2002; Sadeh et al., 2014). Apart from being self-punishment, NSSI is also a form of avoiding and temporarily alleviating feelings of shame or guilt (Chapman, Gratz, & Brown, 2006; Sadeh et al., 2014).

Indonesia, which is included in developing countries, has become children and adolescents in Indonesia, many of whom experience separation from their parents. Separation of parent can be in the form of death, employment, and also divorce.

There are several classifications on separation of parent, one of which is child-parent separation at birth and at 15 birthday, those who are separated from their father or mother have a greater risk of experiencing NSSI and this risk is even greater if the child is separated from both parents (5 -6 times higher) compared to children who experienced separation of parents after 15 years of age (Astrup et al., 2017).

There are three research questions in the central of this review. The first question tries to explain the process of the occurrence of NSSI in a person: (1) how is the process of arising NSSI in the subject? Secondly, it is essential to know personality can lead NSSI, so the second question is formulated as: (2) Does borderline personality play a position as a factor that triggers NSSI? The third question focused on the role of separation of parent effect NSSI (3) What is the role of separation of parent in NSSI?

## 2. Method

The literature search was conducted by ScienceDirect, JAMAPEDS, SAGE, The Journal of Child and Psychiatry, Springer, Taylor & Francis using the term 'self-harm', 'NSSI', 'self-injury', 'self-mutilation', 'parental separation', "separation of parent", "borderline" and 'BPD'. Keywords are used by the author independently or in combination to maximize the range of literature searches.

The search was conducted in September 2020. The following steps carried out screening of research journals: (1) Evaluating study title, whether there were two study variables or not; (2) Examining the research abstract. Literature with abstracts. Literatures with appropriate abstracts were collected for further screening according to inclusion and exclusion criteria.

### 2.1. Inclusion and Exclusion

The literature obtained was then selected based on inclusion criteria. Studies that selected are (1) have gone through a peer-reviewed process, (2) were published during 2010-2020 (3) are written in English, (4) there is information on the number of samples (n) and involved participants. Incomplete data will be excluded when a review of the full article reveals that the study did not answer the research questions raised in this review.

Instead, in order to make sense of the reviewed evidence, the findings were arranged in a table that also illustrated the features of the studies (Table 1). Furthermore, the results were synthesized in accordance with the three research questions. Findings from the

reviews that concerned about NSSI and the relation between personality and parental separation

TABLE 1: Included articles

No	Autor (s)	Design/Approach	Participants	Setting	Instruments used to measure attitudes or influencing factors	Relevant findings
1	Andover, M. S., & Gibb, B. E. (2010)	Cohort Study	117 patients	Adult psychiatry unit at a not-for-profit hospital in the Northeastern United States	McLean Screening Instrument for Borderline Personality Disorder (MSI-BPD)	NSSI history and frequency predicted attempted suicide as well as current suicidal ideation and more strongly than depression, hopelessness, and borderline personality disorder characteristics.
2	Andover, M. S. (2014)	Cross sectional study	564 MTurk worker	United States	McLean Screening Instrument for Borderline Disorder (MSI-BPD)	Individuals who conducted NSSI were engaged with NSSI for the last 1 year and conducted NSSI for at least 5 days. Engaging NSSI to relieve negative affection
3	Astrup, A., Pedersen, C. B., Mok, P. L., Carr, M. J., & Webb, R. T. (2017)	Cohort study	1,343,129 persons	individuals born in Denmark and living there on their 15th birthday, with both parents	Survey instruments (not specified in the article)	Acute shock and disruption, along with an ongoing sense of loss of family togetherness, could lead directly to later psychological distress, mental illness and self-harming behaviour.

No	Autor (s)	Design/Approach	Participants	Setting	Instruments used to measure attitudes or influencing factors	Relevant findings
4	Baetens, I <i>et al.</i> , (2014).	Cross sectional design	1439 (aged 12 years and their parents)	Belgium	Parental Behavior Scale (PBS) Adolescent report measures for NSSI	Parental warmth and supporting behavior have a significant interaction effect to NSSI, controlling parent (low support and high control) is a risk factor for NSSI
5	Beckman <i>et al.</i> (2016)	Cohort Study	Patient age 18-24 years, hospitalized after self-harm in 1990 and 2003	Hospital in Sweden	ICD 9 (E950-9, E980-9) and ICD 10 (X60-84, Y10-34) (International Classification of Disease)	Factors associated with adverse outcome after self-harm: family history, psychotic disorders, are factors that can cause self-harm
6	Beckman, Mittendorfer-Rutz, Waern, Larsson, Runeson & Dahlin (2018)	Cohort study	Inpatient and outpatient age 10-24 years during 2000-2009 years	Hospital in Sweden	ICD 10 (X60-84, Y10-34) (International Classification of Disease)	- At the age of 10-17 years, many use severe methods so that the suicide death rate is higher at this age - Attention is needed to adolescents and young adults who commit self-harm because of the high suicide death rates among adolescents and young adults
7	Borschmann <i>et al</i> (2017)	Cohort study	1943 adolescents (14-15 years old)	44 schools in Victoria, Australia	Survey instruments (not specified in the article)	Adolescents who reported parental divorced, a common mental disorder, and antisocial were more likely to do self-harm

No	Autor (s)	Design/Approach	Participants	Setting	Instruments used to measure attitudes or influencing factors	Relevant findings
8	Bureau, Martin, Freynet, Poirier, Lafontaine, & Cloutier(2010)	Experimental study	1238 students (aged 17 and 24 years)	English and French introductory psychology courses in an Eastern Canadian University	The Ottawa Self-Injury Inventory (OSI) (AUAQ) to assessed parent and child relationship	Poor quality of relationship between child and parent is one of dimension can cause NSSI
9	Guvendeger Doksat, Zahmacioglu, Ciftci Demirci, Kocaman, & Erdogan, (2017).	Cross sectional study	2667 children	Bakirkoy Hospital for Psychiatric and Neurologic Disorders in Istanbul	Lifetime history of physical and sexual abuse, NSSI, and HSA were assessed via a clinical intake interview and noted on the semi-structured questionnaire.	Parental separation/divorce were the risk of HAS (High Suicidal Attempt) and NSSI
10	Grenklo <i>et al</i> (2013).	Population-based study	952 youth	Sweden 2009 and 2010	Unadjusted and adjusted odds ratios (ORs) of self-injury	Loss of parent can be a risk factor to self-injury in youth Depression and emotional numbness are potentially factor for self-injury Self-injury almost twice prevalent in youth with loss of parent

No	Author (s)	Design/Approach	Participants	Setting	Instruments used to measure attitudes or influencing factors	Relevant findings
11	Hawton, Bergen, Kapur, Cooper, Steeg, Ness & Waters (2012).	Cohort study	individuals aged 10–18 years between 2000 and 2007, and national death information on these individuals to the end of 2010	General hospital (Emergency Department) 1 in Oxford, 3 in Manchester, and 2 in Derby	ICD 10 (International Classification of Disease)	<ul style="list-style-type: none"> <li>- proportion dying by suicide was six times greater in those aged 15 years and older at first presentation</li> <li>- self-harm with cutting method at both the initial episode of self-harm and (for repeaters) at the last episode of self-harm carried greater risk of eventual suicide than self-harm with poisoning</li> </ul>
12	Law & Shek (2013).	Cohort study	2579 participants 8 grades	28 secondary schools in Hongkong	Chinese Family Assessment Inventory (Shek DTL, Ma, 2010) Checklist of self-harm behaviour	<ul style="list-style-type: none"> <li>- Cutting or scratching is the most common self-harm among Chinese adolescents</li> <li>- Girls is more sensitive to interpersonal relationship like parents or peers, this makes high prevalence of self-harm and suicide in girls compared with boys</li> <li>- Correlation between self-harm and suicide attempt is moderate high</li> </ul>

No	Autor (s)	Design/Approach	Participants	Setting	Instruments used to measure attitudes or influencing factors	Relevant findings
13	Marco, Garcia-Alandete, Pérez, Guillen, Jorquera, Espallargas, & Botella (2015).	Cohort study	80 patients with BPD diagnosis	Public mental health service	Structured Clinical Interview for DSM-IV Axis II Personality Disorders (SCID II)	Participants diagnosed with BPD who felt low meaning in life had more depression, hopelessness, frequency of NSSI at baseline, and frequency of NSSI during the follow-up than participants with high meaning in life
14	Muehlenkamp, Brausch & Washburn (2017)	Cross sectional study	825 adolescent patient	Patient admitted to an acute care treatment program designed to treat NSSI and/or suicidal behavior	Alexian Brothers Assessment of Self-Injury (ABASI) Borderline Evaluation of Severity Over Time (BEST)	High-NSSI group reported higher levels of depressive, psychotic, borderline personality, and substance abuse symptoms indicating that these adolescents are experiencing high levels of psychiatric distress
15	Perez, Lorca, & Marco (2020)	Cross sectional study	127 patients	BPD intervention clinic	Structured Clinical Interview for DSM-5 disorder (SCID-5)	- NSSI as a form of borderline personality disorder to regulate emotions - There is a relationship between father and NSSI in BPD patients who have a background of abuse, neglected, maltreatment, or any other type of distant



No	Autor (s)	Design/Approach	Participants	Setting	Instruments used to measure attitudes or influencing factors	Relevant findings
16	Sadeh <i>et al</i> (2014)	Mixed-method design	36 adolescent and young adult	Outpatient psychotherapy clinic	Structured Clinical Interview for DSM-IV-II (SCID-II) Inventory of Statement about Self-Injury (ISAS)	- BPD affect regulation have a significant association with intrapersonal function of NSSI - Affect regulation and self-punishment are particularly relevant to maintain NSSI - Emotional instability were positively associated with NSSI
17	Spitzen <i>et al</i> (2020).	Mixed-method design	50 participants	BPD Outpatient psychiatric treatment in the LWL-University-Hospital Bochum, Germany	Structured Clinical Interview for DSM-IV	- NSSI has been associated with emotional regulation function - Inner emptiness, fear, and aggression lead patient to do NSSI - NSSI + BPD subjects deliberate to cut themselves in more exposed region
18	Spitzen <i>et al</i> (2020)	Mixed-method design	84 adult	Western Canada and Southern United States	Deliberate Self-Harm Inventory (DSHI) Personality Assessment Inventory-Borderline Features Scale (PAI-BOR; Morey, 1991)	- The pathology of BPD which has a relationship with self-conscious emotion has a strong relationship to the occurrence of NSSI - Individuals with BPD who are motivated to do NSSI as self-punishing will have a higher risk of doing NSSI again in the future

No	Autor (s)	Design/Approach	Participants	Setting	Instruments used to measure attitudes or influencing factors	Relevant findings
19	Tresno, Ito, & Mearns (2012)	Mixed-method design	314 college student	Psychology in Private University, Indonesia	Deliberate Self-Harm Inventory (DSHI)	<ul style="list-style-type: none"> <li>- First act of NSSI occurred on 15 years old</li> <li>- Individual in the NSSI who used more than one method have a higher risk in suicide</li> <li>- Childhood trauma is one of risk factor for NSSI</li> </ul>
20	Zaki <i>et al</i> (2013)	Mixed-method design	81 individuals with BPD	-	Inventory of Statement about Self-Injury (ISAS)	<ul style="list-style-type: none"> <li>- rumination and emotion differentiation in predicting self-injury in adults with BPD who reported histories of NSSI</li> </ul>

Findings that addressed influencing factors to these attitudes were also grouped together, as were findings that regarded the influence of NSSI.



Figure 1  
Selection articles

Figure 1: Selection articles

### 3. Result

There are 20 articles; these relevant, qualitative, and quantitative studies. Other articles include NSSI, neuroticism, impulsivity, and parental separation. The settings of some of these articles vary. Detailed study characteristics and relevant findings of each study are presented in Table 1.

### 3.1. Non-Suicidal Self-Injury

The literature reviewed provides the definition of Non-suicidal self-injury (NSSI) is a deliberate destruction of one's own body tissue without suicidal intention and not socially sanctioned behavior that causes physical injury. NSSI is mostly found in adolescents or young adults (Plener et al., 2016). Adolescence with NSSI there is a relationship with interpersonal chaos, namely the greater the level of interpersonal chaos, the greater the adolescence it engages with NSSI. Interpersonal chaos referred to here is fear of abandonment, experiencing many conflicted or off/on-again relationships, and tendencies to do anything to stop others from leaving the relationship (Muehlenkamp et al., 2017).

### 3.2. Non-Suicidal Self-Injury and Borderline Personality Disorder

There are five of the literature reviews that discuss the relationship between NSSI and borderline personality disorder. Borderline personality disorder is measured by MSI-BPD (McLean Screening Instrument for Borderline Personality Disorder), BEST (Borderline Evaluation of Severity Over Time), PAI-DOR (Personality Assessment Inventory-Borderline Features Scale), and SCID-5 (Structured Clinical Interview) for DSM-5 disorder). From the five literature reviews, it is found that there is a relationship between borderline personality disorder. Borderline personality disorder there are factors that cause borderline personality disorder to return to NSSI at a later date, namely self-conscious emotions and identity problems (Spitzen et al., 2020).

### 3.3. Non-Suicidal Self-Injury and separation of parent

Separation of parent is one of the factors that play a role in individuals who carry out NSSI. There are 6 literature reviews which state that there is a relationship between NSSI and separation of parent. It was found that individuals who experienced separation of parent at the age of 15 years or in their early adolescence had a higher tendency to do NSSI than individuals who experienced parental separation during their childhood (Astrup et al., 2017).

The type of parent also influences the individual who performs NSSI. Parents with low support and high expectations provide a greater risk than warm parental and behavior relations (Bureau et al., 2010). The association between NSSI parental separation can also be due to the death of the parents. Individuals who experience the loss of their

parents will experience grief and grief leading to depression and emotional numbness. The individual commits NSSI as an expression of the grief (Grenklo et al., 2013).

## 4. Discussion

This review has aimed to develop insight into NSSI and the factors that influence this behavior such as borderline personality disorder and separation of parent. The results show that both borderline personality disorder and separation of parent towards NSSI appears to exist among individuals with NSSI. Furthermore, there is reason to believe that borderline personality disorder and separation of parent effect on NSSI relating to the use some scale to measure NSSI in several studies featured in this review (see Table 1).

Patients with BPD symptoms can cause NSSI due to intrapersonal functions (i.e., affect regulation and self-punishment). It was also found that the BPD who carried out NSSI was because it was a form of self-punishment. Apart from being self-punishment, NSSI is also a form of avoiding and temporarily alleviating feelings of shame or guilt (Chapman et al., 2006; Sadeh et al., 2014). The differences in NSSI performed in BPD patients were more common in adolescents than in adults. It was also found that individuals with BPD have a higher risk of recurring the NSSI behavior. There are several factors that cause BPD to be strongly associated with NSSI and suicide attempts, this is due to chaotic relationships and history of suicide (Muehlenkamp et al., 2011; Sadeh et al., 2014).

There are factors that cause borderline personality disorder to return to NSSI at a later date, namely self-conscious emotions and identity problems. In borderline personality disorder, there are also negative emotions such as anger, empathy, sadness, and anxiety (Spitzen et al., 2020). These emotions can be a reinforcement on borderline personality and NSSI.

The type of parent (low support and high expectations) also influences the individual who performs NSSI. Parents with low support and high expectations provide a greater risk than warm parental and behavior relations. In this study, it can be seen that warm parental plays a very important role in NSSI behavior that occurs in individuals (Bureau et al., 2010). There are parental factors as well in NSSI behavior. Based on a report from the National Child Development Study (NDCS), it was found that parental separation that occurs at the age of 11-16 years old impacts mental health in young adults. There is an effect of parental separation duration that individuals who live with their parents for 15 years have a lower risk of NSSI behavior than those who experience parental

separation before 15 years old (Astrup et al., 2017). So, it was found that there was a relationship between parental separation and the occurrence of NSSI.

As it may, improving NSSI in individuals with borderline personality disorder and experiencing separation of parent is not easy. It is a complex matter that might most successfully be resolved with a multifaceted approach and can provide immediate treatment so that individuals with NSSI do not commit suicide or continue on suicidal attempt. The literature reviewed indicates that this approach focuses on the main areas: NSSI relation to borderline personality disorder and separation of parent.

## 5. Conclusion

Although individuals engaging in the NSSI had the borderline personality disorder. Individuals who engage with NSSI associations discussed in this literature review were borderline personality disorder as well as risk factors for separation of parents. Interpersonal chaos is one of the causes of borderline personality disorder engaged with NSSI. Separation is also a factor causing NSSI due to traumatizing children and parents, loss of family togetherness. In addition to borderline personality disorder being a risk factor for NSSI, borderline personality disorder is also a risk for suicidal attempts.

## Limitations

This review has several limitations. Considering the small number of studies included and the methodological issues described, the findings should be treated with caution. This applies especially to the results on the second and third research questions, focusing on the factors that personality, parental separation, and NSSI toward suicidal. Therefore, all comments made about this are preliminary and warrant further investigation in future research.

## Recommendations

This review suggests that future research into the effects of borderline personality disorder and separation of parent, risk factors for NSSI, towards suicidal attempt is needed. The number of studies on this topic is too small when considering the urgent and evident need because the death rate in adolescents and young people due to suicide is increasing, there is a need for randomized control trials and experimental trials that focus on the effect of NSSI. More research using reliable and valid instruments

into suicidal attempt and NSSI is required. Furthermore, the limited ability of self-report questionnaires to NSSI accurately indicates an urgent need for observational and research on this topic.

## References

- [1] Astrup, A., *et al.* (2017). Self-Harm Risk between Adolescence and Midlife in People who Experienced Separation from one or both Parents During Childhood. *Journal of Affective Disorders*, vol. 208, pp. 582–589. <https://doi.org/10.1016/j.jad.2016.10.023>.
- [2] Brown, M. Z., Comtois, K. A. and Linehan, M. M. (2002). Reasons for Suicide Attempts and Nonsuicidal Self-Injury in Women with Borderline Personality Disorder. *Journal of Abnormal Psychology*, vol. 111, issue 1, pp. 198–202, <https://doi.org/10.1037/0021-843X.111.1.198>.
- [3] Bureau, J.-F., *et al.* (2010). Perceived Dimensions of Parenting and Non-suicidal Self-injury in Young Adults. *Journal of Youth and Adolescence*, vol. 39, issue 5, pp. 484–494, <https://doi.org/10.1007/s10964-009-9470-4>.
- [4] Chapman, A. L., Gratz, K. L. and Brown, M. Z. (2006). Solving the Puzzle of Deliberate Self-Harm: The Experiential Avoidance Model. *Behaviour Research and Therapy*, vol. 44, issue 3, pp. 371–394, <https://doi.org/10.1016/j.brat.2005.03.005>.
- [5] Grenklo, T. B., *et al.* (2013). Self-injury in Teenagers Who Lost a Parent to Cancer: A Nationwide, Population-Based, Long-term Follow-up. *JAMA Pediatrics*, vol. 167, issue 2, p. 133, <https://doi.org/10.1001/jamapediatrics.2013.430>.
- [6] Laghi, F., *et al.* (2016). Theory of Mind in Non-Suicidal Self-Injury (NSSI) Adolescents. *Consciousness and Cognition*, vol. 43, pp. 38–47, <https://doi.org/10.1016/j.concog.2016.05.004>.
- [7] Lloyd-Richardson, E. E., *et al.* (2007). Characteristics and Functions of Non-Suicidal Self-Injury in a Community Sample of Adolescents. *Psychological Medicine*, vol. 37, issue 8, pp. 1183–1192, <https://doi.org/10.1017/S003329170700027X>.
- [8] Martin, J., *et al.* (2016). Family-Based Risk Factors for Non-Suicidal Self-Injury: Considering Influences of Maltreatment, Adverse Family-Life Experiences, and Parent–Child Relational Risk. *Journal of Adolescence*, vol. 49, pp. 170–180, <https://doi.org/10.1016/j.adolescence.2016.03.015>.
- [9] Muehlenkamp, J. J., Brausch, A. M. and Washburn, J. J. (2017). How Much is Enough? Examining Frequency Criteria for NSSI Disorder in Adolescent Inpatients. *Journal of Consulting and Clinical Psychology*, vol. 85, issue 6, pp. 611–619, <https://doi.org/10.1037/ccp0000209>.

- [10] Muehlenkamp, J. J., *et al.* (2011). Borderline Personality Symptoms Differentiate Non-Suicidal and Suicidal Self-Injury in Ethnically Diverse Adolescent Outpatients: BPD and NSSI. *Journal of Child Psychology and Psychiatry*, vol. 52, issue 2, pp. 148–155, <https://doi.org/10.1111/j.1469-7610.2010.02305.x>.
- [11] Nock, M., *et al.* (2006). Non-Suicidal Self-Injury among Adolescents: Diagnostic Correlates and Relation to Suicide Attempts. *Psychiatry Research*, vol. 144, issue 1, pp. 65–72, <https://doi.org/10.1016/j.psychres.2006.05.010>.
- [12] Paul, E., *et al.* (2015). Frequency and Functions of Non-Suicidal Self-Injury: Associations with Suicidal Thoughts and Behaviors. *Psychiatry Research*, vol. 225, issue 3, pp. 276–282, <https://doi.org/10.1016/j.psychres.2014.12.026>.
- [13] Plener, P. L., *et al.* (2016). The Prevalence of Nonsuicidal Self-Injury (NSSI) in a Representative Sample of the German Population. *BMC Psychiatry*, vol. 16, issue 1, p. 353, <https://doi.org/10.1186/s12888-016-1060-x>.
- [14] Ross, S. and Heath, N. (2002). A Study of the Frequency of Self-Mutilation in a Community Sample of Adolescents. *Journal of Youth and Adolescence*, vol. 31, issue 1, pp. 67–77, <https://doi.org/10.1023/A:1014089117419>.
- [15] Sadeh, N., *et al.* (2014). Functions of Non-Suicidal Self-Injury in Adolescents and Young Adults with Borderline Personality Disorder Symptoms. *Psychiatry Research*, vol. 216, issue 2, pp. 217–222, <https://doi.org/10.1016/j.psychres.2014.02.018>.
- [16] Spitzen, T. L., *et al.* (2020). Predicting Engagement in Nonsuicidal Self-Injury (NSSI) over the Course of 12 Months: The Roles of Borderline Personality Disorder Pathology and Emotional Consequences of NSSI. *Journal of Affective Disorders*, issue 277, pp. 631–639, <https://doi.org/10.1016/j.jad.2020.08.049>.
- [17] Tresno, F., Ito, Y. and Mearns, J. (2012). Self-Injurious Behavior and Suicide Attempts Among Indonesian College Students. *Death Studies*, vol. 36, issue 7, pp. 627–639, <https://doi.org/10.1080/07481187.2011.604464>.
- [18] Whitlock, J. (2006). Self-injurious Behaviors in a College Population. *PEDIATRICS*, vol. 117, issue 6, pp. 1939–1948, <https://doi.org/10.1542/peds.2005-2543>.
- [19] Wong, J. P. S., *et al.* (2007). Risk Factors Associated with Suicide Attempts and Other Self-injury Among Hong Kong Adolescents. *Suicide and Life-Threatening Behavior*, vol. 37, issue 4, pp. 453–466, <https://doi.org/10.1521/suli.2007.37.4.453>.
- [20] Yamaguchi, A., *et al.* (2004). Self-Injury Experience among College Students: A Self-Report Questionnaire. *Clinical Psychiatry*, vol. 46, pp. 473–479.

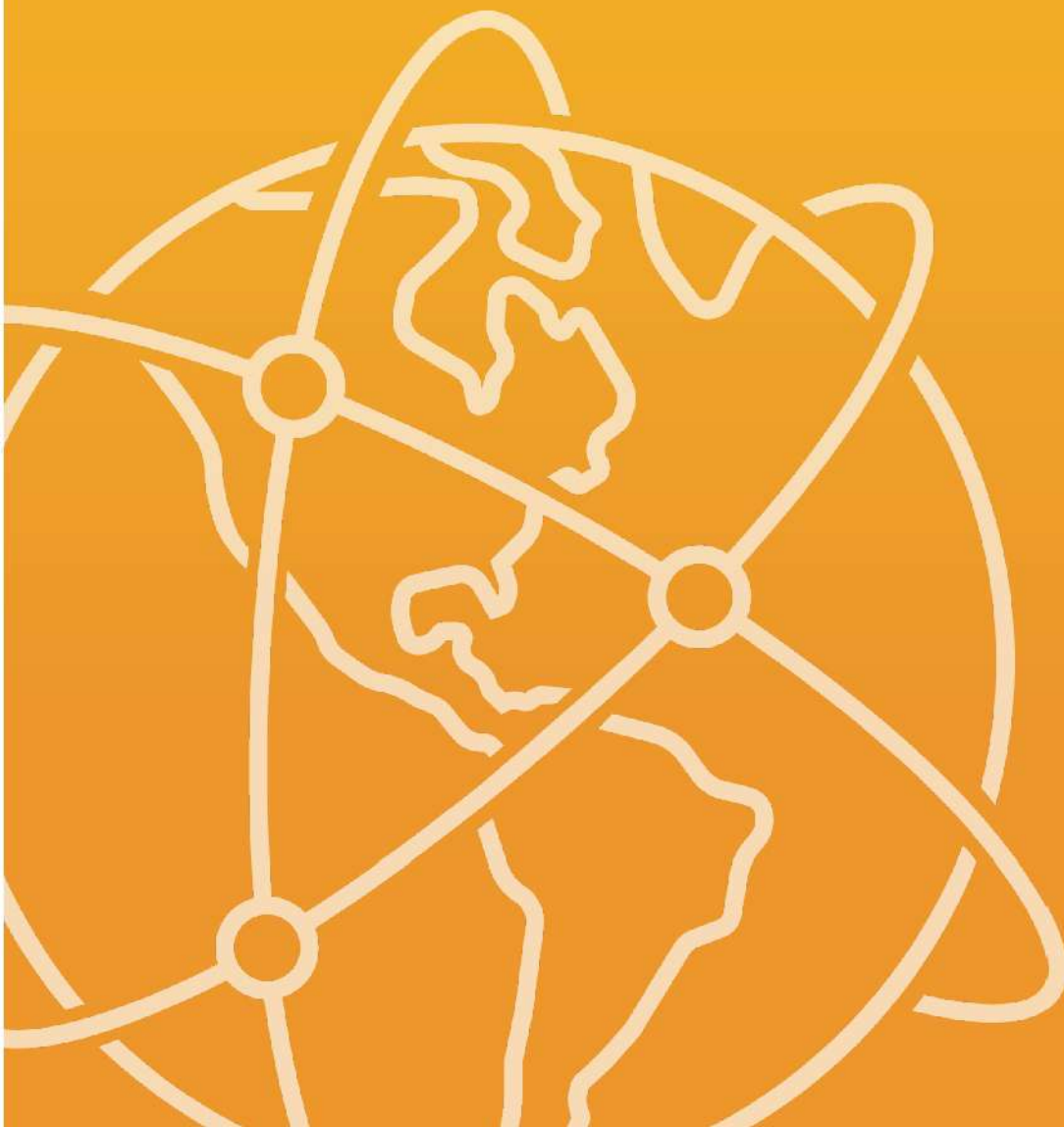


# International Conference of Psychology

Indonesia

7–8 November 2020

**ISSN 2518-668X**





## Our Team



**Kamran R. Kardan**  
Founder & CEO



**Emily Choynowski**  
Chief Academic Officer



**Rekha Nimesh**  
Editorial Manager



**Ahmed Moustafa**  
Production Manager



**Leila Elizabeth Kardan**  
Client Relations Manager



**Deepti Thapa**  
Editorial Coordinator



**Fabiha Shaikh**  
Editorial Coordinator



**Malavika Suresh**  
Journal Insights Coordinator



**Raja Hatem Khaled**  
Production Editor



**Ali Saber**  
Production Editor



**Mohadeseh Davvari**  
Publishing and Training Coordinator



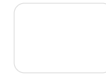
**Nahil Nassar**  
Community Engagement Manager



**Jacir Hilmi**  
Translator



**Sushant Viridi**  
IT & Client Support Manager



# KnE Social Sciences

ISSN: 2518-668X

The latest conference proceedings on  
humanities, arts and social sciences.

Subscribe

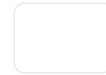
Navigation



## International Conference of Psychology

This collection contains selected papers from the International Research Conference of Psychology 2020 (ICoPsy 2020). The conference was held on the 7<sup>th</sup> and 8<sup>th</sup> of November 2020 and hosted by the Faculty of Psychology, Universitas Negeri Malang.

The conference encourages international co-operation between scientists and practitioners in the fields of economics, education, psychology and social sciences, and the event placed specific emphasis on the improvement of mental health during the Covid-19



across a number of key themes relating to the fields of Psychology, Sociology, Education and Economics. Topics include mental and behavioural health, public health, e-learning and the changes in economic behaviours in response to the pandemic.

This issue of *KnE Social Sciences* will be of interest to academics, students and professionals involved in research and scientific applications relating to physical and mental health, economic behaviour, and e-learning during the COVID-19 pandemic.

**Conference date:** 7–8 November 2020

**Location:** Indonesia

**Organizer:** Faculty of Psychology, Universitas Negeri Malang

**Published:** 5 January 2021

**ISSN:** 2518-668X

**Published:** Jan 05 2021

### **Attachment and Age As Predictors of the Emotional Maturity of University Students**

**Pages:** 1–20

**Authors:** Karenina Graceilia Herwandha, Endang Prastuti,

[Read more >](#)

### **Emotion-Focused Coping Strategies As Predictors of New Inmates' Adjustment in the Pandemic Era**

**Pages:** 21–31

**Authors:** Moh. Bisri, Putri Arum Ayu Iriany Karsiyanto, Afifah Chusna Az Zahra, Tutut Chusniyah,

[Read more >](#)

### **Family Factors Affecting Adolescents' Happiness During the Covid-19 Pandemic**

**Pages:** 32–40

**Authors:** Hepi Wahyuningsih, Resnia Novitasari, Fitri Ayu Kusumaningrum,

[Read more >](#)

### **Mindfulness, Health and Wellbeing**

**Pages:** 41–49

**Authors:** Syahnur Rahman, Endang Prastuti, Machmudah Machmudah,

[Read more >](#)

### **Non-Suicidal Self-Injury in Those Dealing With**

[Read more >](#)

### **The Influence of Beauty Vloggers on Purchasing**

[Read more >](#)



Pages: 50-64

**Authors:** Janice Valencia, Frikson Christian Sinambela,

**Authors:** Okta Nurvia, Budi Sarasati,

**Panic-Buying Behaviour During the Covid-19 Outbreak: A Cross-Cultural Psychological Study**

Pages: 80-87

**Authors:** Nur Eva, Dirga Rahma Saputra, Dyah Ayu Wulandari, Fana Ahdzati Yahya, Witrie Annisa,

[Read more >](#)

**Psychological Capital as a Predictor of Self Compassion Amongst those of Productive Age Unemployed During the Pandemic**

Pages: 88-96

**Authors:** Fattah Hidayat, Mochammad Arifin Afif, Krista Insan Dermawan, Tutut Chusniyah,

[Read more >](#)

**Planting Values through Character Education for Early Childhood**

Pages: 97-108

**Authors:** Sarah Emmanuel Haryono, Siti Muntomimah, Nur Eva,

[Read more >](#)

**Problem Focused Coping Methods Used by Students During Covid-19**

Pages: 109-120

**Authors:** Ahmad Muhammad Diponegoro, Ayu Meryka Santoso, Endah Siti Nurjannah, Naufan

[Read more >](#)

**The Application of Quality of Life Therapy via Teletherapy during COVID-19 to Reduce Depression in Early Adulthood (When caused by bullying during adolescence)**

Pages: 121-138

**Authors:** Lisda Iqballa, Ike Dwiastuti,

[Read more >](#)

**Risk Perception of Covid 19**

Pages: 139-144

**Authors:** Indah Yasminum Suhanti, Rakhmaditya Dewi Noorrizki, Kukuh Setyo Pambudi,

[Read more >](#)

**Religious Fundamentalism as the Predictor of Secondary Students' Obedience to Authority During Pandemic**

Pages: 145-155

**Authors:** Tutut Chusniyah, Nila Rosa

**Sawang-sinawang: Focusing Illusion in Disability Context**

Pages: 156-167

**Authors:** Ziadatul Hikmiah, Unita Werdi Rahajeng,

[Read more >](#)



**Self-Regulation amongst Married Students Participating in E-Learning Activities at IAIN Madura**

Pages: 168-176

Authors: Endang Prastuti, Evi Febriani,

[Read more >](#)

**Social Comparison as a Predictor of Self-Esteem Amongst Instagram-Using Students during the Covid-19 Pandemic**

Pages: 177-186

Authors: Tutut Chusniah, Rosita Yulia Wildyarti, Achmad Muhammad Danyalin, Ahmad Shodiq,

[Read more >](#)

**Student Optimism Regarding Online Learning During the Covid-19 Pandemic**

Pages: 187-194

Authors: Istiqomah ., Endang Prastuti,

[Read more >](#)

**The Role of the Flannel Flower Bouquet Workshop in Enhancing Creativity and Promoting Entrepreneurship Amongst Orphans**

Pages: 195-201

Authors: Rakhmaditya Dewi Noorrizki, Nur Rohmah Hidayatul Qoyyimah, Retno Sulis- tiyaningsih, Hayatun

[Read more >](#)

**Academic Resilience and Subjective Well-Being amongst College Students using Online Learning during the COVID-19 Pandemic**

Pages: 202-214

Authors: Nur Eva, Dinda Dwi Parameitha, Fada Ayu Mei Farah, Fia Nurfitriana,

[Read more >](#)

**Disobeying Government Rules: A Descriptive Study of Intention to Apply Health Protocol During Covid-19**

Pages: 215-223

Authors: Rakhmaditya Dewi Noorrizki, Indah Yasminum Suhanti, Kukuh Setyo Pambudi,

[Read more >](#)

**Children's Social Competence Learning Strategies for Building Mental Health During Covid-19**

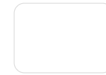
Pages: 224-235

[Read more >](#)

**The Determinant Factors of Employees' Subjective Wellbeing**

Pages: 236-243

Authors: Nina Zulida Situmorang, Muhammad Nur Syuhada,  
[Read more >](#)

**E-Learning Readiness and Learning Engagement during the Covid-19 Pandemic**

Pages: 236–243

Authors: Wiwik Juwarini Prihastiwati,  
Endang Prastuti, Nur Eva,

[Read more >](#)

**“Guest Teacher” As a Class Inspirational Program in Pandemic Covid-19**

Pages: 254–262

Authors: Rahayu Asyhari, Sri Wahyu  
Agustin, Aji Bagus Priyambodo,

[Read more >](#)

**The Contribution of Workload and Stress towards Burnout in Special Needs Teachers**

Pages: 263–283

Authors: Bakhitah Jihan Wijaya,  
Endang Prastuti,

[Read more >](#)

**The Eudaimonic Well Being Among Indonesia’s Scriptural Learners During the Covid-19 Pandemic**

Pages: 284–289

Authors: Ahmad Muhammad  
Diponegoro, Fattah Hanurawan,

[Read more >](#)

**A Conceptual Paper: Moderating Effects of Metacognition and Gender on the Association between Emotion Regulation and Self-Efficacy Among Pre-Service Teachers**

Pages: 290–297

Authors: Yeoh Sun Wei, Fonny  
Dameaty Hutagalung, Chew Fong  
Peng,

[Read more >](#)

**The Impact of Psychoeducation on Healthy Diet in Children with ASD during the Covid-19 Pandemic**

Pages: 298–311

Authors: Aji Bagus Priyambodo, Lhulu  
An-Nisa,

[Read more >](#)

**Stop Academic Procrastination During Covid 19: Academic Procrastination Reduces Subjective Well-Being**

Pages: 312–325

Authors: Suhadianto ., Isrida Yul  
Arifiana, Hetti Rahmawati, Fattah  
Hanurawan, Nur Eva,

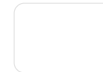
[Read more >](#)

**The Anxiety Dynamics amongst the Elderly during the Covid-19 Pandemic**

Pages: 326–335

Authors: Retno Sulistiyarningsih,  
Aldelia Shielda Rasyid, Dillia Nur  
Amalia, Fiska Fitria Harna, Ali Syahidin

[Read more >](#)

**Work Engagement for  
Millennial Workers in  
Malang City**

Pages: 336–351

**Authors:** Jevi Oktavia, Nur Eva,  
Giftfarisi Achmad,

[Read more >](#)

**Students in the Class of  
2016/2017 at Borobudur  
University, Jakarta**

Pages: 352–364

**Authors:** Ika Wahyu Pratiwi, Hayati .,

[Read more >](#)

**The Role of Optimism in  
Responding to Covid-19**

Pages: 365–369

**Authors:** Nur Eva, Qurrotul Aini Fitria  
Sari, Ravitawati Dwi Andini, alsabila  
Zara Mahasin,

[Read more >](#)

**The Relationship Between  
Phubbing and Romantic  
Relationship Satisfaction: A  
Literature Review**

Pages: 370–385

**Authors:** Masita Utami, Muhammad  
Khairul Anam, Rakhmadiyah Dewi  
Noorrizki,

[Read more >](#)

**The Resilience of Recovered  
Covid-19 Patients**

Pages: 386–392

**Authors:** Ahmad Muhammad  
Diponegoro, Intan Nur Khasanah,  
Nabila Salma, Muham- mad Zaki

[Read more >](#)

**Academic Resilience of  
“Bidik Misi” Grantee  
Students in Malang During  
Pandemic Covid-19**

Pages: 393–398

**Authors:** Ayu Dyah Hapsari, Hetti  
Rahmawati, Dwi Nikmah Puspitasari,  
Indah Yasminum Suhanti,

[Read more >](#)

**Correlation between Job  
Crafting and Employee  
Resilience during Pandemic  
Covid-19**

Pages: 399–407

**Authors:** Diyah Sulistiyorini, Gebi  
Angelina Zahra,

[Read more >](#)

**Exploring the Impact of  
COVID-19 Hoax on the  
Mental Health of Millennial  
Moms**

Pages: 408–429

**Authors:** Anjarie Dharmastuti, Fressi  
Apriliyanti, Fitri Wahyuni,

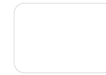
[Read more >](#)

**School from Home during  
COVID-19 Pandemic, a  
Descriptive Study: Effectivity  
of Learning towards High**

[Read more >](#)

**Student’s Evaluation on the  
Use of Learning Media  
During Pandemic**

Pages: 446–453  
[Read more >](#)



**Authors:** Meria Susanti, Izzanil Hidayati, Nila Anggreiny, Yantri Maputra,

## Contact

**Email:** [publishing@knowledgee.com](mailto:publishing@knowledgee.com)

**Phone:** +971 4 4227043

## Follow Us



## Useful Links

[About](#)

[Content](#)

[Corporate Company](#)

[Administrative Access](#)

## Our Services

[Publish With Us](#)

[KnE Clues](#)