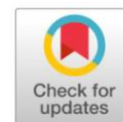




## Literature Review

*Indonesian medicinal plants as potential candidates for alpha-glucosidase inhibitor : A comprehensive literature review for anti-diabetic therapy*

Joanne Natalie Leiwakabessy <sup>1</sup>, Marisca Evalina Gondokesumo <sup>2</sup>,  
Mariana Wahjudi <sup>3</sup>

<sup>1</sup> Industrial Pharmacy Study Program, Faculty of Pharmacy, University of Surabaya, Surabaya, East Java, Indonesia

<sup>2</sup> Faculty of Pharmacy, University of Surabaya, Surabaya, East Java, Indonesia

<sup>3</sup> Faculty of Technobiology, Universitas Surabaya, University of Surabaya, East Java, Indonesia

**Abstract:** Diabetes mellitus is a chronic metabolic disorder characterized by elevated blood glucose levels due to impaired insulin activity. One therapeutic strategy to manage postprandial hyperglycemia is the inhibition of the  $\alpha$ -glucosidase enzyme, which plays a key role in carbohydrate digestion. This literature review aimed to identify Indonesian medicinal plants with potential  $\alpha$ -glucosidase inhibitory activity based on in vitro studies. Articles were systematically retrieved from Google Scholar using specific keywords, covering publications from the last ten years (2014–2024) in English or Indonesian and accessible in full text. Inclusion criteria focused on studies evaluating in vitro  $\alpha$ -glucosidase inhibition from Indonesian plant extracts; non-Indonesian or non-in vitro studies were excluded. Of the 200 screened articles, 34 met the criteria. Most studies employed spectrophotometric colorimetric assays using p-nitrophenyl- $\alpha$ -D-glucopyranoside (pNPG) as the substrate to assess inhibitory activity. In total, 40 plant species were identified as having  $\alpha$ -glucosidase inhibitory potential, with active compounds primarily including flavonoids, polyphenols, alkaloids, saponins, and tannins. The most commonly observed mechanism was competitive inhibition, wherein active compounds, especially flavonoids, blocked carbohydrate hydrolysis and reduced glucose absorption. Some studies also reported mixed and non-competitive inhibition through allosteric binding or conformational changes in the enzyme. This review supports the potential of various Indonesian medicinal plants as sources of natural  $\alpha$ -glucosidase inhibitors, highlighting their relevance for the development of safer, plant-based antidiabetic therapies.

**Keywords:** Alpha-glucosidase; Diabetes mellitus; In Vitro; Medicinal plants; hyperglycemia.

## INTRODUCTION

Diabetes mellitus (DM) is defined as a metabolic disorder caused by impaired insulin secretion in the pancreas, which prevents cells from absorbing glucose and utilizing it as an energy source.<sup>1</sup> The insulin hormone produced by the pancreas helps control blood sugar levels. In some diabetic patients, insulin cannot be processed in the pancreas, so that cells cannot absorb glucose and use it as

Corresponding author.

E-mail address: [marisca@staff.ubaya.ac.id](mailto:marisca@staff.ubaya.ac.id) (Marisca Evalina Gondokesumo)

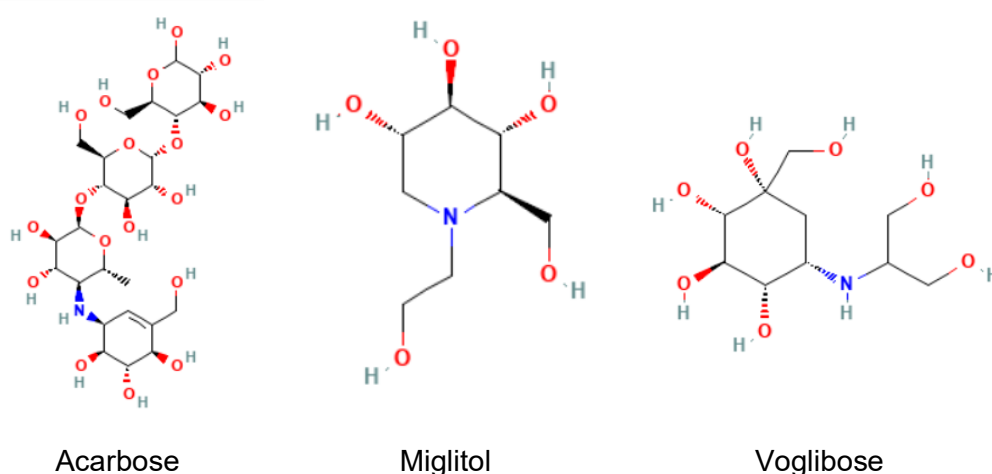
DOI: [10.29238/teknolabjournal.v14i2.478](https://doi.org/10.29238/teknolabjournal.v14i2.478)

Received 23 April 2024; Received in revised form 06 May 2025; Accepted 21 July 2025

© 2025 The Authors. Published by [Poltekkes Kemenkes Yogyakarta](http://PoltekkesKemenkesYogyakarta), Indonesia.

This is an open-access article under the [CC BY-SA](https://creativecommons.org/licenses/by-sa/4.0/) license.

energy in the body<sup>1</sup>. DM poses a global health threat due to its often asymptomatic nature until complications arise. According to the World Health Organization (WHO), the number of people with diabetes mellitus in Indonesia is projected to increase significantly, reaching 21.3 million by 2030<sup>2</sup>. In 2021, Indonesia ranked third in diabetes mellitus prevalence at 10.8% and placed seventh among the ten countries with the highest number of diabetes cases worldwide.<sup>3</sup> One of the therapeutic approaches to DM is by inhibiting the  $\alpha$ -glucosidase enzyme that works in the carbohydrate digestion process, catalyzing the reaction of disaccharides to monosaccharides in the small intestine. The activity of this enzyme can slow down the absorption of glucose into the bloodstream, so that in the process of inhibition of the  $\alpha$ -glucosidase enzyme, it has a significant impact on controlling blood sugar levels so that it can minimize postprandial blood sugar levels as a controller of hyperglycemia.<sup>4</sup> Alpha-glucosidase inhibitors are non-invasive treatments that generally have mild gastrointestinal side effects, which are short-term depending on the dose, such as diarrhea, abdominal pain, and bloating.<sup>1</sup> There are three  $\alpha$ -glucosidase inhibitors used, including acarbose, miglitol, and voglibose (Figure 1).



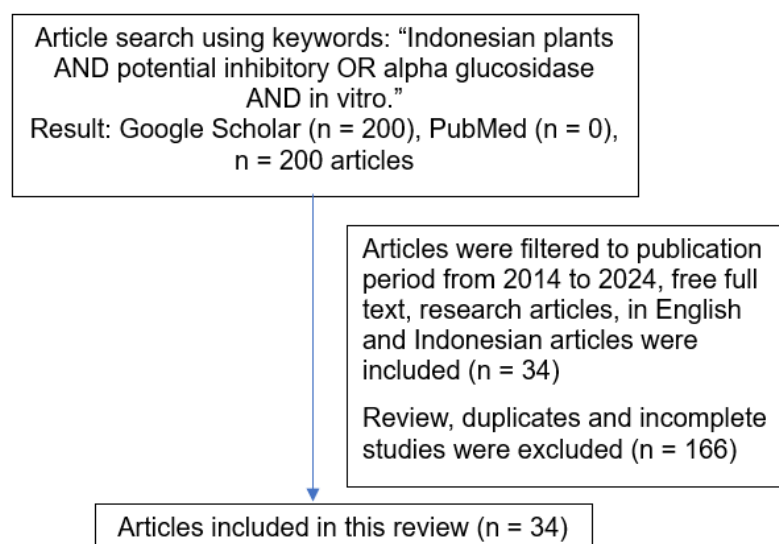
**Figure 1.** Structure of Acarbose, Miglitol, and Voglibose ([PubChem](#))

$\alpha$ -glucosidase enzyme inhibitor agents are available in Indonesia, one of which is acarbose, an oligosaccharide complex that functions to inhibit a number of enzymes involved in the process of breaking down complex carbohydrates in the intestine. Acarbose is able to inhibit membrane-bound  $\alpha$ -glucosidase and pancreatic  $\alpha$ -amylase, which function in the metabolism of complex starches and oligo-, tri, and disaccharides that will be absorbed into simple sugars.<sup>5</sup> That has prompted the search for safer alternatives through the screening of naturally occurring active compounds from plants.

Herbal plants remain a key component in drug development research. Indonesia's vast natural resources have encouraged the use of traditional medicine as an alternative treatment. Medicinal plants contain secondary metabolites that contribute to pharmacological activities, including antidiabetic effects<sup>3</sup>. Herbal medicine is often chosen to minimize the side effects of chemical therapies and support physiological functions. This review offers novelty by focusing specifically on studies from the past ten years that investigate the alpha-glucosidase inhibitory activity of Indonesian medicinal plants through in vitro assays, an area that has not been extensively reviewed. Therefore, this article highlights the importance of exploring Indonesian herbal plants as potential alpha-glucosidase inhibitors based on in vitro evidence.

## MATERIAL AND METHOD

This research review was conducted based on a literature review. The research flow is presented in Figure 2, using the Google Scholar database with publications from the last ten years written in either Indonesian or English and available in full text. The keywords used in this study to search for relevant literature were “Indonesian plants AND potential inhibitory OR alpha glucosidase AND in vitro.” This systematic review focuses on herbal plant extracts with potential in vitro alpha-glucosidase inhibitory activity. A total of 200 articles were screened, and 34 met the inclusion criteria.”



**Figure 2.** Pathway of Literature Sceening

## RESULTS AND DISCUSSION

There are several methods for  $\alpha$ -glucosidase inhibition by natural compounds in the newly developed method. The colorimetric-based quantitative method is the most common and practical approach to be used to verify the inhibitory activity of different compounds against the  $\alpha$ -glucosidase enzyme. This review mainly discusses the spectrophotometric-based in vitro  $\alpha$ -glucosidase inhibitory activity of various plant extracts and their pharmacokinetic properties. The search resulted in 200 articles showing in vitro  $\alpha$ -glucosidase inhibition from plants and syntheses that have potential anti-diabetic agents. These articles were then further sorted by in vitro studies. After elimination, 34 articles were specifically tested for in vitro  $\alpha$ -glucosidase inhibitory activity. Several previous studies among the 34 articles evaluated in full text in the context of in vitro tests were known to still use conventional extraction methods, one of which was the maceration method to obtain secondary metabolites (Table 1).

**Table 1. Plant extracts that have  $\alpha$ -glucosidase inhibitory activity**

| Plant name                                      | Part used                              | Type of extrac  | Candidate compound  | Mechanism  | Method  | Ref. |
|---|--|---|---|--|---|------|
| <i>Abelmoschus manihot</i> (L.)                 | leaves                                 | Ethanol 70% with maceration method                                      | Alkaloids, flavonoids, saponins, steroids and triterpenoids                                   | Involving interactions of active compounds such as flavonoids and terpenoids with the active site of the enzyme, thereby reducing its activity and decreasing the rate of glucose absorption from food   | 410 nm monitored using a microplate reader                | 7    |
| <i>Annona muricata</i>                          | leaves                                 | n-hexane, ethyl acetate, ethanol 96%, and water using maceration method | Muricatin C, cis-Reticulatacin-10-one, dan 3-Methylquercetin 7-[galactosyl-(1->4)-glucoside]. | Inhibits $\alpha$ -glucosidase through competitive and allosteric binding; active compounds (Muricatin C, cis-Reticulatacin-10-one, 3-Methylquercetin) interact with the enzyme's active site, reducing its catalytic activity and glucose release | The absorbance was measured in a UV-Vis spectrophotometer | 8    |
| <i>Ardisia humilis</i> Vahl.                    | leaves, stems and bark                 | Methanol 70% using reflux method  | Polyphenols or phenolic compounds   | The $\alpha$ -glucosidase inhibitory activity is proportional to the total phenolic content. Phenolic compounds interact with the enzyme competitively and enhance the antidiabetic effect.  | at a wavelength of 413 nm.                                | 9    |
| <i>Artabotrys hexapetalus</i>                   | breadfruit leaves are yellow and green | Maceration method using ethanol solvent                                 | Hydroxysitansinon IIA in stem extract while phenolic compounds contribute from leaf extract   | The mechanism involves competitive inhibition, where terpene (hydroxytanshinone IIA) and phenolic compounds interact with the active site of $\alpha$ -glucosidase, thereby reducing its catalytic activity  | measured using at 400 nm using a UV-Vis spectrophotometer | 10   |
| <i>Artocarpus altilis</i> ((parkinson) fosberg) | leaves                                 | n-hexane and ethanol 70%, with maceration method                        | Alkaloids, flavonoids, triterpenoids, steroids, polyphenols                                   | Acts as a competitive inhibitor of $\alpha$ -glucosidase by binding to the enzyme's active site, thereby reducing the hydrolysis of complex carbohydrates into glucose   | At 400 nm using a UV-Vis spectrophotometer                | 11   |

|   |  |   |   |  |   |    |
|---|--|---|---|--|---|----|
| <i>Aquilaria malaccensis</i>  | stems                                    | Soxhlet method using chloroform solvent.  | 5-Hydroxy-4',7-dimethoxyflavone and epifriedelanol                            | Active compounds in <i>Aquilaria malaccensis</i> , such as 5-hydroxy-4',7-dimethoxyflavone and epifriedelanol, inhibit $\alpha$ -glucosidase through hydrogen bonding and hydrophobic interactions. The flavonoid acts competitively, while the triterpenoid contributes via complementary binding   | ELISA reader or microplate reader: $\lambda$ = 405 nm               | 12 |
| <i>Brotowali Stem (Tinospora Crispa (L.))</i>   | aerial & wood                            | Extraction was carried out using maceration method using ethanol 96%.   | Terpenoids and terpenoid glycosides   | Competitive inhibition through the interaction of active compounds with the enzyme's active site; reduces the catalytic breakdown of disaccharides into glucose  | UV-Vis spectrophotometer at 540 nm                                  | 13 |
| <i>Caesalpinia sappan</i> , <i>Andrographis paniculata</i> , & <i>Syzygium cumini</i> | sawdust                                  | Ethanol 70% is done by maceration method  | Homoisoflavanoids, protosappanin, phaeophorbide A methyl ester & saurufuran B | <i>Caesalpinia sappan</i> , <i>Andrographis paniculata</i> , and <i>Syzygium cumini</i> inhibit $\alpha$ -glucosidase through competitive and non-competitive mechanisms. Their bioactive compounds—such as brazilin, andrographolide, quercetin, and other flavonoids—interact with the enzyme's active or allosteric sites, reducing its ability to hydrolyze carbohydrates into glucose | UV-Vis spectrophotometry with $\lambda$ 400 nm                      | 14 |
| <i>Caesalpinia sappan L.</i> and <i>Garcinia mangostana</i>                           | Rhizomes                                 | 70% ethanol-water (1:10) is done by maceration method   | Flavanoids  | Synergistic inhibition via flavonoid binding at the active site; blocks substrate access and reduces $\alpha$ -glucosidase activity  | Absorbance was measured at a wavelength of 405 nm microplate reader | 15 |
| <i>Curcuma zanthorrhiza</i>   | Rhizomes, leaves, stems, flowers & fruit | Extraction is done by maceration method, the sample is extracted with 75% methanol for 24 hours at room temperature | xanthorrhizol   | Competitive inhibition by xanthorrhizol and phenolics binding to the active site; slows oligosaccharide breakdown and postprandial glucose rise.   | The absorbance was measured by a microplate reader (Varioskan       | 16 |

|   |                                  |  |  |   |  |    |
|---|----------------------------------|--|--|---|--|----|
| <i>Etlintera Elatior</i>  | bark                             | Extraction is done by maceration method, filled with 96% ethanol left for 24 hours                                 | Phenolics, flavonoids and tannins  | Inhibition likely occurs via phenolic and flavonoid compounds interacting with the enzyme's active site, reducing carbohydrate breakdown  | Flash, Thermo) at 405 nm.  | 17 |
| Five Litsea Plants ( <i>Litsea elliptica</i> , <i>Litsea ferruginea</i> , <i>Litsea firma</i> , <i>Litsea garciae</i> , and <i>Litsea sp.</i> ) | leaves                           | The extraction method used is reflux method with 96% ethanol solvent with a ratio of 1:10 and extracted for 1 hour | Phenolics and flavonoids   | Inhibition of this enzyme by phenolic and flavonoid compounds in <i>Litsea</i> species slows carbohydrate digestion, thereby reducing the rapid postprandial entry of glucose into the bloodstream and helping to control blood sugar spikes. | reading of the absorbance at 410 nm with a microplate reader (Epoch Biotech, USA)  | 18 |
| Piper species : <i>P. betle</i> , <i>P. aduncum</i> , <i>P. retrofractum</i> dan <i>P. crocatum</i>   | leaves                           | Extracted with methanol using maceration method  | Terpenoids and flavonoids  | Terpenoids in <i>Piper crocatum</i> (e.g., trans-isoelemicin, myrcene, trans-ocimene) likely inhibit $\alpha$ -glucosidase by reversibly or irreversibly binding to its active site, preventing substrate interaction and glucose formation   | Absorbance was measured at a wavelength of 410 nm using a UV-Vis spectrophotometer | 19 |
| <i>Garcinia lateriflora</i>   | leaves                           | Simplicity powder is macerated with three different solvents: n-hexane, ethyl acetate, and methanol, for 24 hours  | Ethyl acetate extract: Flavonoids, alkaloids, antaquinone glycosides and tannins         | Phenolic compounds such as xanthenes and flavonoids in <i>Garcinia lateriflora</i> are proposed to inhibit $\alpha$ -glucosidase by binding to its active site, blocking disaccharide hydrolysis and reducing glucose absorption.             |  | 20 |
| <i>Gnetum gnemon</i> L.   | green tea powder                 | Extract is macerated with 96% ethanol solvent  | Methanol extract: alkaloids, saponins, tannins, glycosides, flavonoids and interquinones | Flavonoids, stilbenes, steroids, and phenolics inhibit $\alpha$ -glucosidase by covalent or non-covalent binding to active site residues, blocking substrate access and carbohydrate hydrolysis   | absorbance was recorded at 405 nm using a microplate reader                        | 21 |
| <i>Glochidion arborescens</i> (Müll. Arg.) Boerl.) dan Daun Tanaman Sala ( <i>Cynometra ramiflora</i> Linn                                      | roots, bark, leaves, and flowers | With maceration method using 96% ethanol   | steroid, tanin, polifenol, flavonoid, dan kelompok saponin                               | Phenolic and flavonoid compounds likely inhibit $\alpha$ -glucosidase by competitively binding to its active site, reducing carbohydrate hydrolysis and glucose absorption  | activity was carried out using UV-Vis spectrophotometry at a wavelength of 536 nm  | 22 |

|  |                |  |   |   |   |    |
|--|----------------|--|---|---|---|----|
| <i>Green tea</i>                       | leaves         | Conducted by maceration method using 70% Methanol  | N-hexane extract: steroids/terpenoids                 | Catechins in green tea, particularly EGCG, inhibit $\alpha$ -glucosidase by binding to active site residues via hydrogen bonds and hydrophobic interactions, or by inducing conformational changes that block substrate access          | microplate reader (Versamax ELISA Microplate Reader, USA) was used to measure the absorbance of the solution at 400 nm  | 23 |
| <i>Gymnanthemum amygdalinum</i>        | leaves         | Extracted by maceration using methanol   | Luteolin dan 3-O-methyl quercetin                     | Flavonoids like luteolin in <i>G. amygdalinum</i> likely inhibit $\alpha$ -glucosidase non-competitively by altering enzyme conformation, reducing carbohydrate metabolism and glucose absorption.                                      | The absorbance of the sample was measured using a microplate reader at 405 nm. The test was carried out in triplicate and was also carried out on a blank (DMSO without sample) and acarbose as a positive control. | 24 |
| <i>Hibiscus sabdariffa</i> L (Roselle) | Leaves & stems | Using 70% ethanol solvent by maceration  | Flavanoids, polyphenols, tannins and saponins         | Flavonoids, anthocyanins, and phenolics in <i>Hibiscus sabdariffa</i> inhibit $\alpha$ -glucosidase by binding to its active site and inducing conformational changes, reducing carbohydrate hydrolysis and postprandial glucose levels | ELISA Microplate Reader, was used to measure the absorbance of the solution at 450 nm   | 25 |
| <i>Melia azedarach</i> L               | Leaves         | Ethanol  | flavonoids such as luteolin, miricetin, and quercetin | <i>Melia azedarach</i> L. extract acts as a partial or competitive inhibitor of $\alpha$ -glucosidase, reducing intestinal glucose absorption and aiding glycemic control   | at 410 nm using a microplate reader   | 26 |
| <i>Merremia peltata</i> L              | Leaves &       | hexane, ethyl acetate and methanol using the UAE (Ultrasonic-Assisted Extraction) method | Flavanoids, tannins, polyphenols and saponins         | Phenolic and flavonoid compounds in <i>Merremia peltata</i> inhibit $\alpha$ -glucosidase competitively by binding to the active site, delaying carbohydrate breakdown and postprandial glucose rise                                    | Microplate Reader (Tecan®), while the control was at 400 nm   | 27 |

|   |                              |  |  |   |   |    |
|---|------------------------------|--|--|---|---|----|
| <i>Moringa oleifera</i>   | fruits                       | using 13% wet and dry moringa leaf extract   | quercetin and kaempferol glycosides, chlorogenic acid, alkaloids, saponins, and triterpenoids              | Flavonoids and phenolics in <i>Moringa oleifera</i> leaves inhibit $\alpha$ -glucosidase by reversibly or irreversibly binding to its active site, slowing carbohydrate hydrolysis and glucose absorption.                                    | at 400 nm wavelength with microplate reader                 | 28 |
| <i>Lagerstroemia loudonii</i> Teijsm. & Binn  | Leaves                       | extracted using the reflux method with 96% ethanol for one hour.   | Flavanoids, catechins and polyphenols  | Phenolic compounds in <i>L. loudonii</i> competitively inhibit $\alpha$ -glucosidase by binding to its active site, delaying glucose release  | Spectrophotometry at 400 nm.                                | 29 |
| <i>Loranthus ferrugineus</i> (Loranthaceae) and <i>Peperomia pellucida</i> (Piperaceae) | Fruit skin, leaves and seeds | macerated using n-hexane, ethyl acetate, and methanol. The maceration process was carried out 3 times for 24 hours with 30 minutes of ultrasonication. | flavonoids (e.g. quercetin), phenolic complexes, furan derivatives, and phytosterols                       | Methanol and ethyl acetate extracts of <i>Loranthus ferrugineus</i> and <i>Peperomia pellucida</i> inhibit $\alpha$ -glucosidase by binding to its active site, blocking carbohydrate hydrolysis and reducing postprandial glucose absorption | absorbance was measured at 405 nm using a microplate reader | 30 |
| <i>Parkia Speciosa</i>  | Fruit skin                   | Extracted with 3 L of ethanol  | Flavanoid compounds, namely Luteolin and 2-(3,4-dihydroxyphenyl)-5,7-dihydroxy-3-methoxy-4H-chromen-4-one, | Phenolic and flavonoid compounds in <i>Parkia speciosa</i> act as competitive or non-competitive inhibitors of $\alpha$ -glucosidase, reducing carbohydrate hydrolysis and postprandial glucose absorption                                    | Spectrophotometer at a wavelength of 400 nm                 | 31 |
| <i>Pometia pinnata</i>  | Stems                        | 96% for 48 hours using the maceration method   | phenolics and flavonoids   | Phenolics, flavonoids, and tannins in <i>Pometia pinnata</i> ethyl acetate extract inhibit $\alpha$ -glucosidase by reversibly binding to its active site, reducing disaccharide hydrolysis and postprandial glucose levels.                  | colorimetric method at 400.4 nm,                            | 32 |
| Red Betel ( <i>Piper crocatum</i> Ruiz & Pav)   | Leaves                       | n-Hexane, Ethyl acetate, and Methanol using the maceration method  | content in rosella is suggested to play a role in inhibiting   | Competitive inhibition via sesquiterpenes and phenolics at $\alpha$ -glucosidase active site  | Microplate reader spectrophotometer at 405 nm wavelength.   | 33 |

|   |                     |  |   |  |   |    |
|---|---------------------|--|---|--|---|----|
| <i>Rhizophora mucronata</i> Lam                           | Leaves              | n-hexane, ethyl acetate, and methanol  | the activity of $\alpha$ -amylase and $\alpha$ - $\beta$ -glucosidase   | Reversible inhibition via flavonoid glycosides at $\alpha$ -glucosidase active site.   | Absorbance of sample measured using microplate reader at 405 nm.                              | 34 |
| <i>Sansevieria trifasciata</i>                            | Seaweed             | The <i>R. mucronata</i> leaf residue was macerated with 13 L of 80% methanol.  | phenolic groups,  | Flavonoids, alkaloids, and steroids exert competitive and non-competitive inhibition on $\alpha$ -glucosidase, interfering with substrate access and disrupting disaccharide hydrolysis. | UV-Vis spectrophotometer at a wavelength of 400 nm.   | 35 |
| <i>Sargassum hystrix</i> dan <i>Eucheuma denticulatum</i> | Powder from species | aquadest, 70% ethanol, and   | flavonoids, luteolin, myricetin, and quercetin  | Reversible/irreversible binding to active site by polyphenols and phlorotannins  | UV-Vis spectrophotometry at 405 nm (Specord 200 Plus by                                       | 36 |
| <i>Stenochlaena palustris</i> (Burm.f.)                   | Seaweed             | ethyl acetate  | Phytochemical content of phenolics,   | Flavonols in <i>Stenochlaena palustris</i> bind to the $\alpha$ -glucosidase active site, inhibiting carbohydrate conversion to glucose and supporting glycemic control                  | UV-Vis spectrophotometer Shimadzu UV-1800   | 37 |
| <i>Sargassum sp</i>                                       | Seeds               | aquadest, methanol, and chloroform   | resin glycosides, and flavonoids  | Active site inhibition by phenolics reduces glucose release  | monitored at 405 nm, with a Bio Tek Eon microplate reader (Bio Tek, Synergy HT, Vermont, USA) | 38 |
| <i>Sweetenia mahagoni</i> Seed                            | Leaves              | Extraction was carried out using methanol three times using the maceration method. Next, the crude methanol extract was partitioned in water (H <sub>2</sub> O) and extracted sequentially using n-hexane, dichloromethane, and ethyl acetate. | Based on the content of antioxidant compounds, amino acids, and various other secondary metabolite compounds. | Alkaloids, triterpenoids, and flavonoids in <i>Swietenia mahagoni</i> seeds inhibit $\alpha$ -glucosidase by interfering with carbohydrate breakdown and glucose absorption.             | at 410 nm using a microplate ELISA  | 39 |

|                     |        |  |                              |  |   |    |
|---------------------|--------|--|------------------------------|--|---|----|
| <i>Urena lobata</i> | leaves | Extraction was carried out using ethyl acetate | Triterpenoids, ellagic acid, | Stigmasterol, $\beta$ -sitosterol, and mangiferin from <i>Urena lobata</i> inhibit $\alpha$ -glucosidase by forming hydrogen bonds and van der Waals interactions at the active site, reducing enzymatic activity and postprandial glucose absorption. | by measurement of the absorbance utilizing a microplate reader at a wavelength of 405 nm. | 40 |
|---------------------|--------|--|------------------------------|--|---|----|

The inhibitory activity was assessed using UV-Vis spectrophotometry at wavelengths between 400–450 nm, employing p-nitrophenyl- $\alpha$ -D-glucopyranoside (pNPG) as the substrate, which released a yellow compound (p-nitrophenol) upon hydrolysis by the  $\alpha$ -glucosidase enzyme. Various plant parts including leaves, stems, roots, rhizomes, and fruits were tested and demonstrated potential as  $\alpha$ -glucosidase inhibitors. Secondary metabolites such as flavonoids, alkaloids, tannins, saponins, polyphenols, triterpenoids, and steroids played significant roles in the inhibition mechanisms. Flavonoids, for example, were known to possess hydroxyl groups at positions 3 and 7 that interacted with the enzyme's active site, thereby competitively inhibiting  $\alpha$ -glucosidase activity.<sup>1,43</sup>

Extraction plays a critical role in isolating bioactive compounds from medicinal plants, particularly secondary metabolites associated with  $\alpha$ -glucosidase inhibitory activity. Conventional methods such as maceration, Soxhlet, and percolation are still widely used due to their simplicity and cost-effectiveness, although they require longer processing times and larger volumes of solvents. Among these, maceration remains the most common, as it enables controlled solvent penetration and facilitates the release of metabolites like flavonoids and tannins. However, non-conventional methods such as Ultrasonic-Assisted Extraction (UAE) and Microwave-Assisted Extraction (MAE) offer significant advantages, including reduced solvent use, shorter extraction times, and better preservation of thermolabile compounds. MAE, for instance, utilizes electromagnetic radiation to rupture cell walls and enhance the release of intracellular phytochemicals, making it suitable for extracting sensitive bioactive compounds. Given that many  $\alpha$ -glucosidase inhibitors such as polyphenols, flavonoids, and alkaloids are heat- and solvent-sensitive, optimizing the extraction technique is essential to maximize therapeutic potential and support further pharmacological or clinical applications.<sup>47</sup>

Plants containing compounds such as alkaloids, steroids, polyphenols, saponins, tannins, triterpenes, and flavonoids have the potential to inhibit the  $\alpha$ -glucosidase enzyme in type 2 diabetes mellitus. Polyphenols in plants are known to inhibit the activity of digestive enzymes through interactions with proteins. The inhibitory activity produced by secondary metabolites, such as polyphenols, steroids, and alkaloids, against carbohydrate-hydrolyzing enzymes can help reduce postprandial hyperglycemia. The inhibitory activity of the  $\alpha$ -glucosidase enzyme is related to the content of flavonoids that have hydroxyl groups at positions 3 or 7 so that they can reduce inhibitory activity.<sup>18</sup> Alkaloid compounds help regenerate pancreatic  $\beta$  cells so that they can lower blood glucose and increase insulin secretion through extra-pancreatic mechanisms. Covering the mechanisms in increasing glycogen synthesis, improving glucose transport in the intestine, and inhibiting glucose synthesis by inhibiting the enzymes glucose-6-phosphatase and fructose-1,6-bisphosphatase in the gluconeogenesis process is important. The inhibition process can reduce the formation of glucose from non-carbohydrate sources and promote glucose oxidation through glucose-6-phosphate dehydrogenase.<sup>48</sup> Flavonoids are phenolic compounds that have a low molecular weight composed of 2-phenylchromone, including acetic acid derivatives. Flavonoids are 15-carbon polyphenol compounds composed of 2 benzene rings linked to 3 linear chains.<sup>2</sup> Flavonoids have the potential to overcome diabetes mellitus, including glucose regulation, increasing insulin secretion and sensitivity, glucose utilization in peripheral tissues, and inhibiting glucose absorption in the intestine.<sup>48,49</sup>

## CONCLUSION

Based on our findings, in vitro studies on Indonesian medicinal plants demonstrated  $\alpha$ -glucosidase inhibitory activity. Indonesian Plants have bioactive

compounds such as flavonoids, polyphenols, alkaloids, tannins, and saponins. These compounds act primarily through competitive inhibition by slowing carbohydrate hydrolysis and reducing postprandial glucose levels. These results support the potential use of Indonesian herbal plants as natural  $\alpha$ -glucosidase inhibitors and reinforce their relevance in the development of alternative antidiabetic therapies with fewer side effects.

## AUTHORS' CONTRIBUTIONS

Joanne Natalie Leiwakabessy: Conceptualization, Methodology, Writing- Original draft preparation. Marisca Evalina Gondokesumo.: Data curation, Writing- Original draft preparation. Mariana Wahjudi: Visualization, Writing- Reviewing and Editing,

## ACKNOWLEDGMENT

Not applicable

## REFERENCE

1. Dirir AM, Daou M, Yousef AF, Yousef LF. A review of alpha-glucosidase inhibitors from plants as potential candidates for the treatment of type-2 diabetes. *Phytochem Rev.* 2022;21(4):1049–1079. doi:10.1007/s11101-021-09773-1.
2. Azzahra A, Farhani N, Syahfitri W, Pasaribu SF, Potensi kandungan flavonoid dalam kayu batak sebagai antidiabetes. *Jurnal Pendidikan Tambusai.* 2022;6(2):14345-14350.
3. Soeatmadji DW, Rosandi R, Saraswati MR, Sibarani RP, Tarigan WO. Clinicodemographic profile and outcomes of type 2 diabetes mellitus in the Indonesian cohort of DISCOVER: A 3-year prospective cohort study. *J ASEAN Fed Endocr Soc.* 2023;38(1):68–74. doi:10.15605/jafes.038.01.10.
4. Lu H, Xie T, Wu Q, Hu Z, Luo Y, Luo F. Alpha-glucosidase inhibitory peptides: sources, preparations, identifications, and action mechanisms. *Nutrients.* 2023;15(19). doi:10.3390/nu15194267.
5. Golalipour E, Hosseininiasab D, Nikbaf-Shandiz M, Rasaei N, Bahari H, Hajmir MM, et al. The effect of acarbose treatment on anthropometric indices in adults: A systematic review and meta-analysis of randomized clinical trials. *Clin Nutr Open Sci.* 2024;56:166–191. doi:10.1016/j.nutos.2024.06.004.
6. Sampepana E, Saputra H, Balai Riset dan Standardisasi Industri Samarinda. Karakteristik tanaman akar batak (Spatholobus littoralis Hassk) dari Loakulu Kabupaten Kutai Kartanegara. 2020;14(2).
7. Prasetyo A. The inhibition of  $\alpha$ -glucosidase enzyme activity from standardized ethanol extract of *Abelmoschus manihot* (L.) Medik leaves. *J Ilmu Kefarmasian Indones.* 2023;21(2).
8. Mugiyanto E, Cahyanta AN, Putra IMA, Setyahadi S, Simanjuntak P. Identifying active compounds of soursop ethanolic fraction as  $\alpha$ -glucosidase inhibitor. *Pharmaciana.* 2019;9(2):191–198. doi:10.12928/pharmaciana.v9i2.10105.
9. Ningsih S, Juniarti F, Rosidah I, Fajriawan AA, Agustini K, Rosmalawati S, et al. Study of the effect of Lampeni (*Ardisia humilis* Vahl.) planting condition toward the alpha-glucosidase inhibition activity in vitro. *Pharmacogn J.* 2020;12(2):377–385. doi:10.5530/pj.2020.12.59.
10. Rosa D, Elya B, Hanafi M, Khatib A, Halim Y, Surya MI. The analysis of *Artabotrys hexapetalus* stem bark and leaf ethanol extract as  $\alpha$ -glucosidase inhibitor in relation to antioxidant activity, phenolic, and flavonoid contents using in vitro analysis, LC-MS, machine learning, and molecular docking. 2023. doi:10.21203/rs.3.rs-2883919/v1.

11. Rante H, Alam G, Irwan M.  $\alpha$ -Glucosidase inhibitory activity of breadfruit leaf extract (*Artocarpus altilis* (Parkinson) Fosberg). *J Phys Conf Ser*. 2019;1341(7). doi:10.1088/1742-6596/1341/7/072015.
12. Wibowo S, Wardhani SK, Hidayati L, Wijayanti N, Matsuo K, Costa J, et al. Investigation of  $\alpha$ -glucosidase and  $\alpha$ -amylase inhibition for antidiabetic potential of agarwood (*Aquilaria malaccensis*) leaves extract. *Biocatal Agric Biotechnol*. 2024;58. doi:10.1016/j.bcab.2024.103152.
13. Fatikhurokhmah HM, Agustini R, Kimia J, Matematika F, Ilmu D, Alam P. Concentration effect of Brotowali stem (*Tinospora crispa* (L.)) in ethanol extracts on the  $\alpha$ -glucosidase enzyme inhibition. *Indones J Chem Sci*. 2022;11(3).
14. Robbani S, Elya B, Iswandana R. Alpha-glucosidase and DPP-IV inhibitory activities of ethanol extract from *Caesalpinia sappan*, *Andrographis paniculata*, and *Syzygium cumini*. *Pharmacogn J*. 2022;14(3):702–709. doi:10.5530/pj.2022.14.89.
15. Artanti N, Dewijanti ID, Muzdalifah D, Windarsih A, Suratno S, Handayani S. Alpha glucosidase inhibitory activity of combination of *Caesalpinia sappan* L. and *Garcinia mangostana* extract. *J Appl Pharm Sci*. 2023;13(5):189–198. doi:10.7324/JAPS.2023.117478.
16. Nurcholis W, Munshif AA, Ambarsari L. Xanthorrhizol contents,  $\alpha$ -glucosidase inhibition, and cytotoxic activities in ethyl acetate fraction of *Curcuma zanthorrhiza* accessions from Indonesia. *Rev Bras Farmacogn*. 2018;28(1):44–49. doi:10.1016/j.bjp.2017.11.001.
17. Zumaidar Z, Asmilia N, Saudah S, Husnah M. In vitro alpha-glucosidase inhibitory effect of *Etlingera elatior* ethanol extract growing in Gayo Highland, Aceh Province, Indonesia. *F1000Res*. 2024;13:489. doi:10.12688/f1000research.149029.1.
18. Rijai AJ, Fidrianny I, Sukrasno S. Phytochemical and screening of  $\alpha$ -glucosidase and  $\alpha$ -amylase inhibitory activities of five *Litsea* plants from East Borneo, Indonesia. *Trop J Nat Prod Res*. 2023;7(8):3666–3670. doi:10.26538/tjnpr/v7i8.15.
19. Hartini YS, Setyaningsih D.  $\alpha$ -Amylase and  $\alpha$ -glucosidase inhibitory effects of four *Piper* species and GC-MS analysis of *Piper crocatum*. *Biodiversitas*. 2023;24(2):1313–1319. doi:10.13057/biodiv/d240274.
20. Mahayasih PGMW, Elya B, Hanafi M. Alpha-glucosidase inhibitory activity of *Garcinia lateriflora* Blume leaves. *J Appl Pharm Sci*. 2017;7(10):100–104. doi:10.7324/JAPS.2017.71014.
21. Herlina H, Elfita E, Saleh I, Mardiyanto M. Testing the inhibition activity of the alpha-glucosidase enzyme of melinjo leaf (*Gnetum gnemon* L.) extract and fractions in vitro. 2024. doi:10.4108/eai.3-11-2023.2347958
22. Haryoto A, Arnida AV, Indrayudha P, Muflihah CH, Yen KH. Inhibitory activity of enzyme  $\alpha$ -glucosidase ethanol extract combination of Mareme plant (*Glochidion arborescens* (Müll. Arg.) Boerl.) and leaves of the Sala plant (*Cynometra ramiflora* Linn). *J Angiother*. 2023;7(1). doi:10.25163/angiotherapy.719344
23. Trinovani E, Prawira-Atmaja MI, Kusmiyati M, Shabri S, Maulana H. Evaluation of antioxidant and  $\alpha$ -glucosidase inhibitory activity of green tea powder from Indonesia tea cultivars. *Beverages*. 2020;0(0):1–9. doi:10.48130/bpr-0024-0036
24. Vonja S, Hartati R, Insanu M. In vitro alpha-glucosidase inhibitory activity and the isolation of luteolin from the flower of *Gymnanthemum amygdalinum* (Delile Sch. Bip ex Walp). *Molecules*. 2022;14(2):738–754. doi:10.3390/molecules

25. Gondokesumo ME, Kusuma HSW, Widowati W.  $\alpha$ - $\beta$ -Glucosidase and  $\alpha$ -amylase inhibitory activities of Roselle (*Hibiscus sabdariffa* L.) ethanol extract. *Mol Cell Biomed Sci.* 2017;1(1):34. doi:10.21705/mcbs.v1i1.3
26. Sulistiyan, Safithri M, Sari YP. Inhibition of  $\alpha$ -glucosidase activity by ethanolic extract of *Melia azedarach* L. leaves. *IOP Conf Ser Earth Environ Sci.* 2016;31(1). doi:10.1088/1755-1315/31/1/012025
27. Muthi'atul Af-Idah B, Hanafi M, Elya B. Antioxidant and alpha-glucosidase inhibitor screening of *Merremia peltata* L. as potential traditional treatment for diabetes mellitus. *Pharmacogn J.* 2021;13(4):902–908. doi:10.5530/pj.2021.13.116
28. Natsir H, Wahab AW, Laga A, Arif AR. Inhibitory activities of *Moringa oleifera* leaf extract against  $\alpha$ -glucosidase enzyme in vitro. *J Phys Conf Ser.* 2018;979(1). doi:10.1088/1742-6596/979/1/012019
29. Riyanti S, Dewi PS, Windyaswari AS, Azizah SAN. Alpha-glucosidase inhibitory activities of Bungur (*Lagerstroemia loudonii* Teijsm. & Binn.) leaves and fruits. *IOP Conf Ser Earth Environ Sci.* 2020;462(1). doi:10.1088/1755-1315/462/1/012042
30. Teruna HY, Hendra R, Almurdani M.  $\alpha$ -Glucosidase inhibitory activities of *Loranthus ferrugineus* and *Peperomia pellucida* extracts. *Pharm Educ.* 2022;22(2):5–8. doi:10.46542/pe.2022.222.58
31. Palembang-Prabumulih Km J, Ilir Sumatera Selatan O. Alpha-glucosidase inhibitory test and total phenolic content of ethanol extract of *Parkia speciosa* plant. *Sci Technol Indones.* 2019;4(1). doi:11.26554/sti.2219.4.1.1-4
32. Styani E, Irawan C, Putri I, Sukiman M. Phytochemical and Anti-diabetic Activity Studies of n-Hexane, Ethyl acetate and Methanol Extracts of Matoa (*Pometia pinnata*) Fruit Peel Using Alpha-Glucosidase Enzyme. In: International Conference on Innovation in Science and Technology (ICIST 2020) 2021 Nov 30 (pp. 287-291). Atlantis Press.
33. Irawan C, Tambunan JA, Rachmy S, Putri ID, Rosalina, Suhartini. Phytochemical analysis of red betel (*Piper crocatum* Ruiz & Pav) stem extracts and its antioxidant and alpha-glucosidase inhibitory potentials. *Trop J Nat Prod Res.* 2024;8(4):7042–7048. doi:10.26538/tjnpr/v8i4.42
34. Puspitasari YE, Tuentner E, Breynaert A, Foubert K, Herawati H, Hariati AM, et al.  $\alpha$ -Glucosidase inhibitory activity of tea and kombucha from *Rhizophora mucronata* leaves. *Beverages.* 2024;10(1). doi:10.3390/beverages10010022
35. Yumna M, Angelina, Abdullah, Arbiyanti R, Utami TS, Hermansyah H. Effect of mother-in-law's tongue leaves (*Sansevieria trifasciata*) extract's solvent polarity on anti-diabetic activity through in vitro  $\alpha$ -glucosidase enzyme inhibition test. *E3S Web Conf.* 2018;67. doi:10.1051/e3sconf/20186703003
36. Husni, A., Pratiwi, T., Samudra, A. G., & Nugroho, A. E. (2018). In vitro antidiabetic activity of *Sargassum hystrix* and *Euclima denticulatum* from Yogyakarta Beach of Indonesia: Antidiabetic activity of *S. hystrix* and *E. denticulatum*. *Proceedings of the Pakistan Academy of Sciences: B. Life and Environmental Sciences*, 55(3), 1-8..
37. Hendra R, Army MK, Frimayanti N, Teruna HY, Abdulah R, Nugraha AS.  $\alpha$ -Glucosidase and  $\alpha$ -amylase inhibitory activity of flavonols from *Stenochlaena palustris* (Burm.f.) Bedd. *Saudi Pharm J.* 2024;32(2). doi:10.1016/j.jsps.2023.101940
38. Firdaus M, Prihanto AA.  $\alpha$ -Amylase and  $\alpha$ -glucosidase inhibition by brown seaweed (*Sargassum* sp) extracts. *Research Journal of Life Science.* 2014 Dec 12;1(1):06-11.
39. Wresdiyati T, Sa'diah SI, Winarto AD, Febriyani V. Alpha-glucosidase inhibition and hypoglycemic activities of *Sweitenia mahagoni* seed extract. *Hayati J Biosci.* 2015;22(2):73–78. doi:10.4308/hjb.22.2.73

40. Purnomo Y, Makdasari J, Fatahillah FI. Inhibitory activity of Urena lobata leaf extract on alpha-amylase and alpha-glucosidase: in vitro and in silico approach. *J Basic Clin Physiol Pharmacol*. 2021;32(4):889–894. doi:10.1515/jbcpp-2020-0430
41. Lam TP, Tran NVN, Pham LHD, Lai NVT, Dang BTN, Truong NLN, et al. Flavonoids as dual-target inhibitors against  $\alpha$ -glucosidase and  $\alpha$ -amylase: a systematic review of in vitro studies. *Nat Prod Bioprospect*. 2024;14(1). doi:10.1007/s13659-023-00424-w
42. Ramadaini T, Sumiwi SA, Febrina E. The anti-diabetic effects of medicinal plants belonging to the Liliaceae family: potential alpha-glucosidase inhibitors. *Drug Des Dev Ther*. 2024;18:3595–3616. doi:10.2147/DDDT.S464100
43. Nguyen HT, Truong VA, Tran PH. Preparation of polysubstituted imidazoles using AC-SO<sub>3</sub>H/[Urea]<sub>7</sub>[ZnCl<sub>2</sub>]<sub>2</sub> as an efficient catalyst system: a novel method, and  $\alpha$ -glucosidase inhibitor activity. *RSC Adv*. 2023;13(18):12455–12463. doi:10.1039/d3ra00755c
44. Oswari LD. Uji aktivitas penghambatan enzim  $\alpha$ -glucosidase ekstrak air dan ekstrak etanol kayu kuning (Arcangelisia flava). *J Kedokt Kesehat*. 2021;8(1). doi:10.32539/JKK.V8I1.13118
45. Ngamwonglumlert L, Devahastin S, Chiewchan N. Natural colorants: pigment stability and extraction yield enhancement via utilization of appropriate pretreatment and extraction methods. *Crit Rev Food Sci Nutr*. 2017;57(15):3243–3259. doi:10.1080/10408398.2015.1109498
46. Devgun M, Nanda A, Ansari HS. Comparison of conventional and non-conventional methods of extraction of heartwood of Pterocarpus marsupium Roxb. 2012.
47. Khoerunniyssa S, Raharjo D, Ardiyantoro B. Optimasi metode microwave-assisted extraction (MAE) untuk menentukan kadar flavonoid total ekstrak etanol kulit pisang kepok (Musa paradisiaca L.). *OBAT J Riset Ilmu Farmasi Kesehat*. 2024;2(6):133–160. doi:10.61132/obat.v2i6.814
48. Munggar IP, Kurnia D, Deawati Y, Julaeha E. Current research of phytochemical, medicinal and non-medicinal uses of Uncaria gambir Roxb.: a review. *Molecules*. 2022;27(19). doi:10.3390/molecules27196551
49. Ridho FM, Artikel R. Mechanism of alkaloids and flavonoids in Bajakah (Uncaria nervosa Elmer) as antidiabetic agents. *J Ilmu Medis Indones*. 2023;3(1):9–16. doi:10.35912/jimi.v3i1.2296