

## Education Effectiveness of Booklet Media in Quality of Life of Diabetes Mellitus Type 2 Outpatients in Anwar Medika Hospital

### (Efektivitas Edukasi Media *Booklet* terhadap Kualitas Hidup Pasien Diabetes Mellitus Tipe 2 Rawat Jalan di Rumah Sakit Anwar Medika)

KHURIN IN WAHYUNI<sup>1,2\*</sup>, ANTONIUS ADJI PRAYITNO SETIADI<sup>1</sup>, YOSI IRAWATI WIBOWO<sup>1</sup>

<sup>1</sup>Faculty Pharmacy, University Surabaya

<sup>2</sup>STIKES Anwar Medika Hospital

Submitted: 21 February 2019, Accepted: 27 April 2020

**Abstract:** DM management is expected to improve the quality of life of patients because the quality of life is the final result of each medical intervention; therefore, it becomes a standard of every successful therapy. One of the improvements in quality of life can be done through education. In providing education, booklet method can be an effective way to deliver information about the activities problem. This study used one-group pre-test post-test design. This study aims to determine the quality of life before and after giving education to outpatients in Anwar Medika Hospital from November 2017 to January 2018 with sample of 109 patients. The measurement of quality of life improvement was measured by the Diabetes Quality of Life (DQOL) score which has 4 domains: satisfaction domain, the impact of DM concerns due to DM and physical, psychological and social concerns. Quantitative analysis carried out by the Wilcoxon signed rank test and showed that there are differences in quality of life with significance of 0.000 ( $p < 0.005$ ) from each domain. Therefore, it can be concluded that, education could impact an important role on improving quality of life.

**Keywords:** Education, booklet, quality of life.

**Abstrak:** Penatalaksanaan DM diharapkan dapat meningkatkan kualitas hidup pasien karena kualitas hidup merupakan hasil akhir dari setiap intervensi sehingga menjadi tolak ukur keberhasilan terapi. Salah satu peningkatan kualitas hidup dapat melalui pemberian edukasi. Dalam pemberian edukasi, metode *booklet* dapat membantu penyampaian informasi terhadap permasalahan. Pada penelitian ini menggunakan *one-group pre-test post-test design*. Penelitian ini bertujuan untuk mengetahui kualitas hidup sebelum dan sesudah pemberian edukasi pada pasien rawat jalan RS Anwar Medika dari November 2017-Januari 2018 dengan sampel 109 pasien. Pengukuran peningkatan skor kualitas hidup diukur dengan skor Diabetes *Quality of Life* (DQOL) yang memiliki 4 domain yaitu domain kepuasan, dampak DM, kekhawatiran karena DM dan kekhawatiran fisik, psikologi dan sosial. Analisis kuantitatif dilakukan dengan menggunakan uji Wilcoxon *signed rank* yang menunjukkan terdapat perbedaan nilai kualitas hidup total dengan signifikansi sebesar 0,000 ( $p < 0,005$ ) dari masing-masing domain sehingga dalam hal ini edukasi dapat berperan penting dalam peningkatan kualitas hidup.

**Kata kunci:** Edukasi, *booklet*, kualitas hidup

---

\*Correspondence author  
E-mail: khurinain87@gmail.com

## INTRODUCTION

DIABETES mellitus (DM) is a group of metabolic diseases characterized by hyperglycemia due to decreased insulin secretion, insulin action, or both<sup>(1)</sup>. WHO predicts an increase in diabetes sufferers by 2-3 times in Indonesia, which is 8.4 million sufferers in 2000 to 21.3 million in 2030. This is in line with the opinion of the International Diabetes Federation (IDF) that predicts an increase in DM patients in Indonesia in 2035 to reach 14.1 million<sup>(2)</sup>.

Based on the 2012 Hospital's annual report in East Java, the second highest number cases of outpatients in government public hospitals type B and C are diabetes type 2<sup>(3)</sup>. Generally, diabetes mellitus type 2 occurs when lifestyle patterns and behavior have been formed. Handling people who suffers from diabetes type 2 requires active participation from patients, families, and the community. Healthcare team accompanies every patient in their progress of healthy behavioral life changes. In order to achieve successful behavior change, comprehensive education and efforts to increase motivation are needed. Poor management DM can decrease the quality of life. Therefore, education needs to be given to improve patient self-management. Education also can help to improve the quality of life within patient mental health by reducing anxiety and depression<sup>(4)</sup>.

Diabetes related education has been an important component of diabetes management since 1930. Education for patients with diabetes type 2 aims to regulate glycemic control, prevent microvascular and macrovascular complications and improve the quality of life by influencing knowledge, attitudes, behavior to be healthy<sup>(5)</sup>. On the treatment process of outpatient with time limitation it is necessary to have media to assist the implementation of education such as booklets. Educational material of early level in booklets can be DM pathophysiology, blood sugar control, pharmacological interventions, non-pharmacology, and management of hypoglycemia.

A study conducted by Faria *et al.* (2012) stated that the quality of life of people with diabetes mellitus before and after given an education showed significant results ( $p < 0.005$ ). According to Rubin and Peyrot<sup>(6)</sup>, the quality of life is a health result which is important for life, represents the ultimate goal of all health interventions so it is important to conduct research related to the effectiveness of education in the effort of changing the quality of life for patients with diabetes type 2 in Anwar Medika Hospital.

## MATERIALS AND METHODS

**METHOD.** This research uses one-group pre-test post-test design. The research was conducted at Anwar Medika General Hospital, Krian Sidoarjo.

**Research Instruments.** The quality of life research instruments used Diabetes Quality of Life (DQOL) questionnaire that has been validated and reliable. The validation of questionnaire related to it language and how accurate it will able to be delivered to people is necessary and it validated by some expert opinion, expert examined the content of questionnaire, and they checked and decided whether the questionnaire meet the domain and easy to understand or not. After the questionnaire being approved, researcher done the construct validity toward 20 patients in Anwar Medika Hospital then the data being processed used SPSS Program.

The question consider as valid if they have probability value of [sig. (2-tailed)] < significant value ( $\alpha$ ) 0.05 and it correlation can be seen by *Pearson correlation* while questionnaire consider as reliable if *Croanbach's Alpha* > 0.7. Validity test produced 30 questions valid with the r value > 0.444 and reliability 0.967. Thus, this questionnaire has 30 questions with positive and negative questions. DQOL has 4 domains, namely satisfaction; impact of DM; worries about DM; concerns about physical, psychological, and social. The questionnaire was modified by Tyas from Munoz and Thiagaraj. Answers uses a Likert scale where positive questions on satisfaction, scale: 4 = very satisfied; 3 = satisfied; 2 = not satisfied; 1 = very dissatisfied. For positive questions about the scale's impact: 1 = never; 2 = rare; 3 = often; 4 = at any time. Meanwhile for negative questions has a score, namely: 4 = never; 3 = rare; 2 = often; 1 = at any time. The validation results show  $r > 0.444$  with a reliability of 0.967 in 20 patients. Category data from the quality of life questionnaires are low, medium, and high ranges, by searching for mean values and standard deviations (SD) then analyzed by descriptive method.

**Sample.** Sampling was conducted by consecutive sampling method; in this method each patient who meets the criteria was included into the study until a certain period of time, therefore the numbers of required patients are fulfilled. The number of samples in this study is 109 obtained by the Slovin formula because the population in this study was known. Inclusion criteria, consist of diabetes mellitus type 2 patients from November 2017 to January 2018 with an age range of 18-60 years, able to communicate, with or

without complications. And for exclusion criteria were patients with diabetes mellitus type 1, who has other disease that burdened diabetes type 2, pediatric and geriatric diabetes were unable to communicate. Drop out criteria is patients who were loss contact or died.

**Procedure.** On the first meeting, patient was given an information concern and DQOL pre-test questionnaires. On the second, third, and fourth meeting, patient obtain an education for 15 minutes personally by researcher while they are waiting their turn to take the medicine in outpatient pharmaceutical installation Anwar Medika Hospital with booklet that has been examined by *National Institute of Diabetes and Digestive and Kidney Diseases*<sup>(7)</sup>. However, those booklet has been modified based on the first educational material from *Consensus on the Management and Prevention of Diabetes Mellitus Type 2 in Indonesia*<sup>(1)</sup>.

The meeting of education done during their weekly check up. The educated material has different content every meeting. On second meets, the material regarding the education of lab result and something related to the diagnosis of DM type 2, DM pathophysiology, DM medicine knowledge, and its implementation when hypoglycemia happen. On the third meeting, the material provided was regarding therapy of non pharmacology and the fourth meeting, the material provided was regarding complication. Post-test done in fifth week, the patient have their DQOL in outpatient pharmaceutical installation of Anwar Medika Hospital.

## RESULT AND DISCUSSION

**Demography.** Based on Table 1, it was found that most people with DM were at the age above 45 years old. This is consistent with the study of Smeltzer *et al.*, who states that the majority of patients with diabetes type 2 mostly experienced by people around 40 years old and over. Because at the age of 40 years old and above, the insulin retention in diabetes type 2 will increase beside their history of heredity and obesity<sup>(7)</sup>. According to Gratia (2013) there is a relationship between age and incidence of DM type 2 which is, at the age of > 45 years old has higher risk of developing diabetes type 2 than the age under 45 years old. The older a person, the more physiological function of the organs will decrease, one of them is the endocrine system, decreased function of pancreatic beta cells to produce insulin. Moreover, in older individual there is a decrease in mitochondrial activity in muscle cells by 35%.

**Table 1. Demographic characteristics of research subjects.**

Variable	Sum	%
1. Age	26-35	2 1.8
	36-45	8 7.3
	46-55	57 52.3
	56-65	42 38.5
2. Gender	Male	45 41.3
	Female	64 58.7
3. Occupation	Pension	5 4.6
	Housewife	53 48.6
	Entrepreneur	17 15.6
	Civil servant	5 4.6
	Private employee	16 14.7
4. Education	Others	13 11.9
	Low (SD-SMP)	66 60.6
	Medium (SMA-DIII)	18 16.5
	Higher (S1-S2)	25 22.9
5. Period of suffering	< 10 years	85 77.1
	> 10 years	24 22.9
6. Complication of DM	No	65 62.4
	Yes	44 37.6

That case related to an increase of fat levels in the muscles by 30% and cause resistance of insulin<sup>(8)</sup>. By the gender characteristics, mostly patients of diabetes type 2 are women within the percentage of 58.7%, this is in line with Adikusuma research (2010) which states that women are more suffered from type 2 diabetes, this is also supported by research in the United States which indicated that the patient of diabetes type 2 mostly women, because physically, women tend to have bigger opportunity to increase her body mass index, excessive fat deposits inside the body will cause a resistance<sup>(9)</sup>.

Postmenopausal women condition after the ovary stops producing hormones, the estrogen hormone produced exclusively from androstenedione by the adrenal gland and encounter aromatization to estron in the process of converting peripheral extraglands. Mainly, this transformation occurs in fat tissue, thus it causes postmenopausal women have more fat tissue and changes in her body composition in. Fat accumulation of visceral, which is mainly central abdominal fat in menopausal women, affects the production of reduced adiponectin protein. Adiponectin works by making body cells more sensitive to insulin action. Low serum adiponectin levels are associated with insulin resistance conditions that can increase blood glucose levels and eventually develop into diabetes mellitus type 2<sup>(10)</sup>.

The results showed that 48.6% of patients consist of housewives. Patients admitted, they are only stay

at home, only doing necessary activities and watching TV. Therefore, it reduced their activity. Beside, they rarely doing any exercise, patients who only doing small activity tend to have greater risk of developing diabetes mellitus, this was supported by research conducted in 13 European countries by Balkau *et al.* (2008). The study states that physical activity in daily life is the main factor that determines insulin sensitivity, so the less activity they carried out, the less insulin sensitivity, it causes a risk of causing DM type 2.

On education category, the higher results are elementary school with 60.5%. Minimum education system will lead into a lack of understanding regarding the risk factors for diabetes type 2, and this is in line with the research of Dedi Irawan (2010) which states that education levels have an influence on DM type 2<sup>(11)</sup>. The higher education level, the better knowledge they got to prevent diseases including DM type 2. Suffering period of diabetes mellitus in this study 77.1% were at <10 years this is likely to cause 62.4% have no complications. Duration of DM is counted from the beginning of the patient being diagnosed by the doctor having DM type 2. According to Issa & Baiyewu (2006) that the quality of life in DMs type 2 patients in Nigeria experiences a better quality of life with the period of having DM under 8 years<sup>(12)</sup>.

**Education Effectiveness to The Quality of Life.** The results of total quality of life before and after education showed significant results with  $p < 0.005$  (Table 2). The quality of life questionnaire had 30 questions with 4 domains which was positive satisfaction, positive and negative DM impacts, negative DM concerns, and negative physical, psychological, and social concerns. From four overall domains, it showed significant of  $p = 0.000$  (Table 2).

On questions of satisfaction domains, the value of a low classification question found in DM knowledge,

**Table 2. The difference result of pre-test and post-test on quality of life.**

Variable	Statistic	
	Z	Asymp. Sig. (2-tailed)
1. Total post-test QOL and total pre-test QOL	-9.065 <sup>b</sup>	0.000
2. Post-test satisfaction domain and pre-test satisfaction	-9.032 <sup>b</sup>	0.000
3. DM effect post-test domain and DM effect pre-test domain	-9.071 <sup>b</sup>	0.000
4. DM concern post-test domain and DM concern pre-test domain	-8.646 <sup>b</sup>	0.000
5. Physical, mental, and social worries post-test domain and physical, mental, and social worries pre-test domain	-8.555 <sup>b</sup>	0.000

a. Wilcoxon signed ranks test

b. Based on negative ranks

satisfaction, and satisfaction of sleep quality (Table 3). Knowledge of diabetes mellitus type 2 patient is important to be improved because patients who get adequate knowledge will improve their understanding and it will affect their behavior. According to Bloom's theory, to change the attitude of patients due to education, the patient must experience the stages from knowing to understanding that have an impact on behavior changes therefore to obtain a better attitudes continuity education should be given.

On the question of quality of sleep satisfaction obtain low points because someone who suffers from diabetes mellitus type 2 usually feels discomfort due to symptoms or signs of the disease that affects patient's sleep quality. On the case of patients with

**Table 3. Average results of pre-test and post-test satisfaction test based on DQOL questionnaire question.**

No	Question	Average of pre-test (x)	Category	Average of post-test (x)	Category
1	Satisfaction	2.368	Medium	2.985	High
2	DM Effect	2.517	Medium	3.284	High
3	DM Concern	2.449	Medium	3.495	High
4	Physical, mental, and social worries	2.491	Medium	3.573	Medium
5	Satisfaction of DM knowledge	2.119	Low	2.835	Low
6	Quality of total sleep	2.193	Low	2.872	Low
7	Satisfaction to a social relation	2.651	High	3.037	Medium
8	Sense about social activity	2.486	Medium	2.954	Medium
9	Satisfaction in daily activities	2.257	Medium	2.954	Medium
10	Sense about performance	2.550	High	3.018	Medium
11	Satisfaction of time doing exercise	2.394	Medium	2.917	Medium
12	Satisfaction of relaxing time	2.394	Medium	3.082	High
13	Satisfaction to the whole of life	2.220	Low	3.064	Medium

**Table 4. Average results of pre-test and post-test domains impacts of DM based on DQOL problem.**

No	Question	Average of pre-test (x)	Category	Average of post-test (x)	Category
14	Sense of pain	2.303	Medium	3.083	Medium
15	Shame sense because of DM	3.101	High	3.725	High
16	Normal blood sugar	2.669	Medium	3.321	Medium
17	Unable to sleep at night	2.312	Medium	3.174	Medium
18	Boundary to friendship	2.936	High	3.596	High
19	Total good feeling	2.303	Medium	2.927	Low
20	Being limited by diet	2.523	Medium	3.312	Medium
21	Boundary of exercising because of DM	2.615	Medium	3.312	Medium
22	Unable to do activities	2.394	Medium	3.339	Medium
23	Relaxing activity is disturbed because of DM	2.385	Medium	3.468	Medium
24	Able to tell about DM to others	2.431	Medium	3.128	Medium
25	Frequently going to the bathroom	2.229	Low	3.027	Low

**Table 5. Average results of pre-test and post-test domain concerns due to DM based on DQOL questionnaire questions.**

No	Question	Average of pre-test (x)	Category	Average of post-test (x)	Category
26	Fear of passing away	2.358	Medium	3.495	Medium
27	Fear of body looking different	2.761	High	3.633	High
28	Fear of occurring complication	2.229	Medium	3.358	Medium

**Table 6. Average results of pre-test and post-test domain physical, psychological, and social concerns based on DQOL questionnaire questions.**

No	Question	Average of pre-test (x)	Category	Average of post-test (x)	Category
29	Fear of losing job	2.367	Medium	3.495	Medium
30	Fear of being unable to go far or travelling	2.615	High	3.651	High

neuropathy complications, extreme pain is a symptom which causes patients to wake up frequently. This is a common complaint in patients with diabetes mellitus type 2, especially in chronic patients with poor glucose control<sup>(13)</sup>. Beside the pain, sleep disorders also caused by nocturia at night which interferes with sleep and patient the sleep cycle. If blood sugar levels above 160-180 mg/dL, glucose will reach urine. If the levels are higher, the kidneys will throw excessed water away to dilute a large amount of lost glucose. Because the kidneys produce excessive amounts of urine, patient often urinate in large amounts. Thus, patient will feel excessively thirsty; and this condition will disturb patient's sleep at night because they often wake up just want to drink<sup>(13)</sup>.

On the questionnaire domain regarding the impact of DM, the lowest score on the question whether the patient feels good and about the feeling of going to the bathroom more often than normal people (Table 4), for good feelings the results of the study showed that patient has a low score because according to Noerhayati (2014) bad quality of life is experienced by people with DM type 2 and their perception about thir disease has not showing any improvement or recovery. This related to negative feelings about DM

type 2 that suffered by patient, based on the theory (King & Hinds, 2007) a decrease in physical function for patients with DM will indirectly affect their psychological state such as the emergence of feelings of sadness, disappointment, anxiety, and depression and that will reduce their happiness<sup>(14)</sup>. Patients who have negative feelings such as despair, anger, shame, and feel they do not care about improving their health, will affect their quality of life<sup>(14)</sup>.

Regarding the questions about necessary of going to the bathroom more often than normal people is caused by one of the symptoms from DM called polyuria. Polyuria occurs because blood glucose increases and exceed the absorbency of the kidneys, and it causes osmotic diuresis. The characteristic of glucose is inhibit the water reabsorption by kidney tubules and it causes the large amounts of water expense along with glucose in form of urine<sup>(15)</sup>.

In the domain of concern regarding DM type 2, lower score come from the questions of the worries on complications (Table 5). Patients feel that the disease can be worse and causing other additional disease. According to Nugroho and Purwanti (2010) patients who know that they are diagnosed with diabetes mellitus will be worry of what happen in the future

on their life. Furthermore, this condition causes an anxiety that can eventually cause stress and can be worsen the condition of Diabetes Mellitus<sup>(16)</sup>. While in the domain of concern for physical, psychological, and social aspects, the lowest results occur on the question regarding job loss (Table 6). Diabetes Mellitus gives psychological effect and physiological as well. On physical concern, patient can be stress on managing their self such as diet, physical activity, recovering the symptoms, and treatment. On psychological concern, patient can be stress of rejection, worry, feelings helpless and had a bad stigma about disease<sup>(17)</sup>. Patients in this study experienced a fear of their physical abilities will be reduced. Therefore, they choose to not carry out a hard activity such as work and ofcourse it will influence their loss of job regarding their feeling of DM type 2. It will affect their physical and their amount of activities.

### CONCLUSION

Based on the explanation regarding diabetes mellitus type 2 and their effect on physical and psychological, and the importance of education system for diabetes mellitus type 2 patients to prevent their bad impact on health, it can be concluded that applying one of method which is booklet method will give a significant difference on before and after doing the intervention.

### ACKNOWLEDGEMENT

The gratitude expression is dedicated by the author to the Director of Anwar Medika Hospital and to all service employees of Anwar Medika Hospital.

### REFERENCES

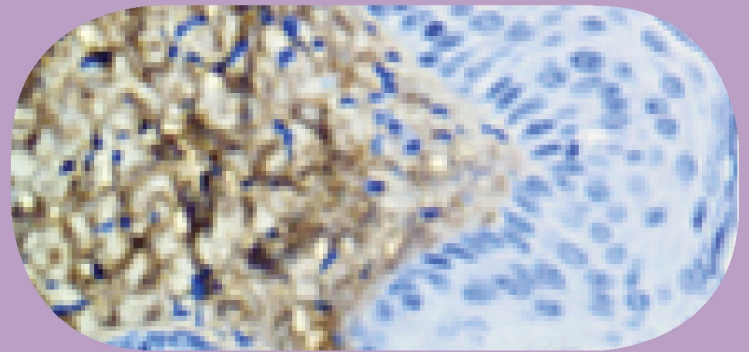
- Indonesia PE. pengelolaan dan pencegahan diabetes melitus tipe 2 di Indonesia. Pb. Perkeni. 2015.
- KKR I. Badan penelitian dan pengembangan kesehatan. Riset Kesehatan Dasar (Riskesdas). 2013.
- Dinas Kesehatan Provinsi Jawa Timur. Profil Kesehatan Provinsi Jawa Timur Tahun 2011. Surabaya: Dinas Kesehatan Provinsi Jawa Timur. 2012. Diakses dari <http://www.depkes.go.id/>.
- Tankova T, Dakovska G, Koev D. Education and quality of life in diabetic patients. Patient Education and Counseling. 2004;53(3):285-90.
- Atak N, Gurkan T, Kose K. The effect of education on knowledge, self management behaviours and self efficacy of patients with type 2 diabetes. Australian Journal of Advanced Nursing. 2008;26(2):66.
- Rubin RR, Peyrot M. Quality of life and diabetes. Diabetes/metabolism research and reviews. 1999;15(3):205-18.
- Brunner LS. Brunner & Suddarth's textbook of medical-surgical nursing. Lippincott Williams & Wilkins. 2010.
- Iroth GS, Kandou GD, Malonda NS. Hubungan antara umur dan pola makan dengan kejadian diabetes melitus tipe 2 pada pasien rawat jalan di wilayah kerja puskesmas Tenga kecamatan Tenga. Media Kesehatan. 2017;9(3).
- Adikusuma W, Perwitasari DA, Supadmi W. Evaluasi kualitas hidup pasien diabetes melitus tipe 2 Rumah Sakit Umum PKU Muhammadiyah Bantul. Prosiding Simposium Nasional "Peluang dan Tantangan Obat Tradisional dalam Pelayanan Kesehatan Formal". 2014.
- Kautzky-Willer A, Harreiter J, Pacini G. Sex and gender differences in risk, pathophysiology and complications of type 2 diabetes mellitus. Endocrine reviews. 2016;37(3):278-316.
- Irawan D. Prevalensi dan faktor risiko kejadian diabetes melitus tipe 2 di daerah urban indonesia. Universitas Indonesia, Fakultas Kesehatan Masyarakat. Depok: Universitas Indonesia. 2010.
- Issa BA, Baiyewu O. Quality of life of patients with diabetes mellitus in a Nigerian Teaching Hospital. Hong Kong Journal of Psychiatry. 2006;16(1).
- Gustimigo ZP. Kualitas tidur penderita diabetes melitus. Jurnal Majority. 2015;4(8):133-8.
- King CR, Hinds PS. Quality of life: from nursing and patient perspectives. Jones & Bartlett Publishers; 2011.
- Kusniawati. Analisis faktor yang berkontribusi terhadap self care diabetes pada klien diabetes melitus tipe 2 di Rumah Sakit Umum Tangerang. Tesis. 2011. Diunduh dari <http://lontar.ui.ac.id/file?file=digital/20281676-T%20Kusniawati.pdf>.
- Nugroho SA, Purwanti OS. Hubungan antara tingkat stres dengan kadar gula darah pada pasien diabetes melitus di Wilayah Kerja Puskesmas Sukoharjo I Kabupaten Sukoharjo.
- Wingert AN, Johnson N, Melton ST. Understanding stress among adults diagnosed with type 2 diabetes at a younger age. PLAID: People Living with And Inspired by Diabetes. 2015;1(1).



J I P I

# JURNAL ILMU KEFARMASIAN INDONESIA

Volume 17. Nomor 2. Oktober 2019





JURNAL  
ILMU KEFARMASIAN  
INDONESIA

[Announcements](#) [Current](#) [Archives](#) [About](#) ▼

## Editorial Team

### Editor in Chief

[Dr. rer.nat. Deni Rahmat, M.Si, Apt. \(Scopus\)\(Gscholar\)](#)

### Secretary Editor

[Mita Restinia, S.Farm, M.Farm, Apt. \(Gscholar\)\(CV\)](#)

### Team Members/Team Editor

[Nur Miftahurrohmah S.Si., M.Si., Apt. \(Gscholar\)\(CV\)](#)

[Dr. Yati Sumiyati, M. Kes., Apt. \(CV\)](#)

[Lusiana Ariani, S. Farm., M.Farm., Apt. \(CV\)](#)

[Anarisa Budiati, S.Farm., M. Farm., Apt. \(CV\)](#)

[Raise Manninda, S. Farm., M. Farm., Apt. \(CV\)](#)

[Safira Nafisa, S. Farm., M. Farm., Apt. \(CV\)](#)

### Managing Editor

[Dwi Fajar Saputra S.Sos., MM \(CV\)](#)

### Website Management

Amipriyadi Gerha Permana, SIP

Ahmad Munadi, S.Kom

### Publisher

[FAKULTAS FARMASI UNIVERSITAS PANCASILA](#)





### Menu

- Editorial Team
- Journal Reviewers
- Peer Review Process
- Focus and Scope
- Publication Ethics
- Online Submission
- Plagiarism Check
- Author Guidelines
- Article Processing Charge
- Open Access Statement
- Copyright
- Indexing & Abstracting
- Letter Statement not Plagiarism
- Author Statement Letter
- Visitor Statistic





### ISSN



---

### Language

[English](#)

[Bahasa Indonesia](#)

---

### Information

[For Readers](#)

[For Authors](#)

[For Librarians](#)

---

### Current Issue

[ATOM 1.0](#)

[RSS 2.0](#)

[RSS 1.0](#)

[Make a Submission](#)

51549



Editorial Office Jurnal Ilmu Kefarmasian Indonesia :  
Jalan Raya Lenteng Agung Srengseng Sawah, Jagakarsa, Kota Jakarta Selatan, 12630,  
Indonesia | e-mail: [adminjifi@univpancasila.ac.id](mailto:adminjifi@univpancasila.ac.id)

**[p-ISSN 1693-1831](#)** (Print) **[e-ISSN 2614-6495](#)** (Online)



**[Fakultas Farmasi Universitas Pancasila](#)**



This work is licensed under a [Creative Commons Attribution-NonCommercial-ShareAlike 4.0 International License](#).



powered by OJS | Open Journal Systems

PKP | PUBLIC KNOWLEDGE PROJECT



[Announcements](#) [Current](#) [Archives](#) [About ▾](#)

### news

 2017-09-29

[Read More >](#)

## Current Issue

### Vol 18 No 1 (2020): JIFI



**Published: 2020-04-29**

## Articles

---

### Content

--

[PDF](#)

---

### **$\beta$ -Blocker Activity of Taya Stem Bark Extract (*Nuclea subdita* (Korth) Steud) in Male Wistar Rats**

Erfan Tri Prasongko, Finna Setiawan, Christina Avanti

1-6

[PDF](#)

---

### **Analysis of Drug Planning and Control at the Pluit Hospital in 2015**

Endang Setiawati, Anny Victor Purba, Wahyudi Uun Hidayat

7-14

[PDF](#)

---

### **Education Effectiveness of Booklet Media in Quality of Life of Diabetes Mellitus Type 2 Outpatients in Anwar Medika Hospital**

Khurin In Wahyuni, Antonius Adji Prayitno Setiadi, Yosi Irawati Wibowo

15-20

[PDF](#)

---

### **The Lipid Profile and Aorta Histopathology on Hyperlipidemic Rat by Giving Green Coffee Extract**

Fransiska Maria Christianty, Diana Holiday, Fifteen Aprila Fajrin, Monica Cinuradha Aura Salsabina, Andrian Roni

21-27

[PDF](#)

---

### **Evaluation of Therapeutic Drug Monitoring Services in Tangerang X Hospital**

Febbyasi Megawaty, Shirly Kumala, Sesilia Andriani Keban

28-33

[PDF](#)

### **Formulation of Curcuma zedoaria as an Antioxidant Emulgel**

Yesi Desmiaty, Wiwi Winarti, Fahleni Fahleni, Lindawati Lindawati

34-40



PDF

---

### **Isolation, Characterization and Biological Activities Assay of Kojic Acid from Liquid Fermentation of Aspergillus Flavus LS03**

Hani Mulyani, Rizna T D, Megawati Megawati, Sofa Fajriah

41-47



PDF

---

### **In-Vitro Antihyaluronidase Activity and Physical Properties of Alpinia zerumbet Rhizome Extract-Loaded Nanostructured Lipid Carrier**

Siti Umroh Noor, Dian Ratih Laksmiawati, Wahono Sumaryono

48-52



PDF

---

### **Effect of Aspartame Oral Administration to AST and ALT Serum Levels and White Rat's Histopatology Description Liver**

Ros Sumarny, Sondang Khairani, Mohamad Rega Satria Ramadhan

53-60



PDF

---

### **Lymphocyte Cell Proliferation Profile of Benalu Batu (Begonia medicinalis) from the North Morowali Regency Central Sulawesi Province**

Akhmad Khumaidi, Agustinus Widodo, Arsa Wahyu Nugrahani, Ediati Sasmito; Nanang Fakhrudin

61-67



PDF

---

### **Physicochemical Properties and Antioxidant Activities of Crude Fucoidan extracted from Sargassum cinereum**

Lilie Nurhidayati, Yashinta Fitriani, Syamsudin Abdillah, Esti Mumpuni, Mohamad Rafi

68-74



PDF

---

### **Nanoemulsion Formulation of Ethanol Extract Okra (*Abelmoschus esculentus* (L.) Moench.) Fruit and Anticholesterol Activity In Vitro Test**

Ratna Djamil, Sarah Zaidan, Vera Butar Butar, Diah Kartika Pratami

75-80



PDF

---

### **Inhibition Activity of Ethanol Extract of Areca Catechu L. against Isolation of Tooth's Bacteria**

Meiriza Djohari, Armon Fernando, Annisa Safitri

81-87



PDF

---

### **Formulation of Transfersome Gel Preparation of Waste Red Onion (*Allium cepa*. L) Tunic using Phosfolipid and Surfactant**

Winda Permata Sari, Soniya Tamara, Sherli Permatasari, Septia Andini

88-95



PDF

---

### **Phytochemical Investigation and Antibacterial Activity Ethanol Extract of Papaya Seeds (*Carica papaya* L.) Applicated for Gel Product**

Wahyuning Setyani, Jacinda Yakub, Octavianus Yandri, Viola Resti Kawan, Theresia Jenny Haryanto, I Made Myasa Darmika

96-100



PDF

---

### **Granul Antidiare Test from Kratom Leaf Ethanol Extract (*Myragina specioca* Korth) again to Mice White Male (*Mus musculus* L)**

Suhaimi Suhaimi, Dian Kartikasari

101-108



PDF

---

### **Antibacterial Ability of Ethanol Extract Sabrang Onion (*Eleutherine americana*) on *Shigella dysentriae* and *Salmonela enteritidis***

Rizqy Dimas Monica, Achadiyani Achadiyani, Astrid F. Khairani, Michael V.L Tumbol

109-117



PDF

---



## Formulation and Activity of Gel Containing Nanoparticles of Javanese Turmeric Extract as Antiacne

Anastasya Anastasya, Deni Rahmat, Anarisa Budiati

118-122



PDF

## Formulation of NLC Gel from Callus Mulberry Leaf Extract Induced by NAA and BAP

Faizatun Faizatun, Erlindha Gangga, Sarah Anindita, Titiek Martati, Nur Miftahurrohmah

123-129



PDF

## The Potency of Essential Oil and Components of Kaempferia pandurata as Slimming Aromatherapy

Irma Hermawati Suparto, Rahmi Nur Wahidah, Irmanida Batubara

130-135



PDF

[View All Issues >](#)



**Menu**

Editorial Team

Journal Reviewers

Peer Review Process

Focus and Scope

Publication Ethics

Online Submission

Plagiarism Check

Author Guidelines

Article Processing Charge

Open Access Statement

Copyright

Indexing & Abstracting

Letter Statement not Plagiarism

Author Statement Letter

Visitor Statistic



**ISSN**



## Language

---

[English](#)

[Bahasa Indonesia](#)

---

## Information

---

[For Readers](#)

[For Authors](#)

[For Librarians](#)

---

## Current Issue

---

[ATOM 1.0](#)

[RSS 2.0](#)

[RSS 1.0](#)

---

[Make a Submission](#)

---

**51549**



---

Editorial Office Jurnal Ilmu Kefarmasian Indonesia :  
Jalan Raya Lenteng Agung Srengseng Sawah, Jagakarsa, Kota Jakarta Selatan, 12630,  
Indonesia | e-mail: [adminjifi@univpancasila.ac.id](mailto:adminjifi@univpancasila.ac.id)

**[p-ISSN 1693-1831](#)** (Print) **[e-ISSN 2614-6495](#)** (Online)



## Fakultas Farmasi Universitas Pancasila



This work is licensed under a [Creative Commons Attribution-NonCommercial-ShareAlike 4.0 International License](https://creativecommons.org/licenses/by-nc-sa/4.0/).



powered by OJS | Open Journal Systems  
PKP | PUBLIC KNOWLEDGE PROJECT

## Journal Profile

# Jurnal Ilmu Kefarmasian Indonesia

eISSN : 26146495 | pISSN :

Health

Universitas Pancasila



**S2**

Sinta Score



Indexed by GARUDA

**14**

H-Index

**13**

H5-Index

**654**

Citations

**516**

5 Year Citations



*Penerbit:*

Fakultas Farmasi Universitas Pancasila

---

[🌐 Website](#) | [🌐 Editor URL](#)

---

*Address:*

Fakultas Farmasi Universitas Pancasila, Srengseng Sawah, Jagakarsa, Jakarta Selatan, 12640  
Jakarta

---

*Email:*

---

*Phone:*

(021) 7864728

2018

2019

2020



Search..



Search results for : *"antonius adji prayitno"*

[✕ clear](#)

Page 1 of 0 | Total Records : 0

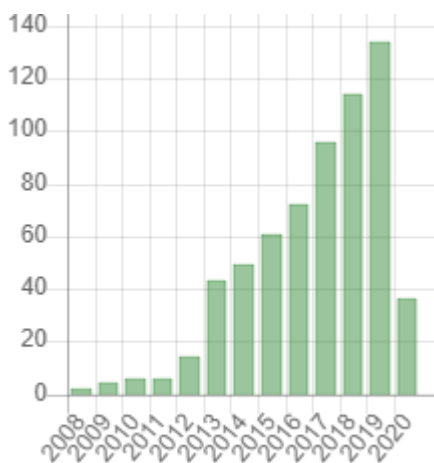
Publications

Citation

Page 1 of 0 | Total Records : 0



### Citation Statistics









KEMENTERIAN RISET, TEKNOLOGI, DAN PENDIDIKAN TINGGI  
DIREKTORAT JENDERAL PENGUATAN RISET DAN PENGEMBANGAN  
Jl. Jenderal Sudirman Pintu Satu Senayan Jakarta 10270  
Telepon (021) 57946042, 316-9804, Faksimil (021) 3101728  
www.ristekdikti.go.id

---

SALINAN

KEPUTUSAN DIREKTUR JENDERAL PENGUATAN RISET DAN PENGEMBANGAN  
KEMENTERIAN RISET, TEKNOLOGI, DAN PENDIDIKAN TINGGI  
REPUBLIK INDONESIA

30/E/KPT/2018

TENTANG

PERINGKAT AKREDITASI JURNAL ILMIAH PERIODE II  
TAHUN 2018

DIREKTUR JENDERAL PENGUATAN RISET DAN PENGEMBANGAN  
KEMENTERIAN RISET, TEKNOLOGI, DAN PENDIDIKAN TINGGI,

- Menimbang : a. bahwa dalam rangka melaksanakan ketentuan Pasal 6 ayat (5) Peraturan Menteri Riset, Teknologi dan Pendidikan Tinggi Nomor 9 Tahun 2018 tentang Akreditasi Jurnal Ilmiah, perlu menetapkan Peringkat Akreditasi Jurnal Ilmiah;
- b. bahwa berdasarkan hasil akreditasi jurnal ilmiah yang ditetapkan oleh Tim Akreditasi Jurnal Ilmiah Kementerian Riset, Teknologi, dan Pendidikan Tinggi pada tanggal 27 September 2018 dan 12 Oktober 2018, perlu menetapkan Peringkat Akreditasi Jurnal Ilmiah Periode II Tahun 2018;
- c. bahwa berdasarkan pertimbangan sebagaimana dimaksud pada huruf a dan huruf b, perlu menetapkan Keputusan Direktur Jenderal Penguatan Riset dan Pengembangan Kementerian Riset, Teknologi, dan Pendidikan Tinggi tentang Peringkat Akreditasi Jurnal Ilmiah Periode II Tahun 2018;
- Mengingat : 1. Undang-Undang Nomor 12 Tahun 2012 tentang Pendidikan Tinggi (Lembaran Negara Republik Indonesia Tahun 2012 Nomor 158, tambahan Lembaran Negara Republik Indonesia Nomor 5336);
2. Peraturan Pemerintah Nomor 4 Tahun 2014 tentang Penyelenggaraan Pendidikan dan Pengelolaan Perguruan Tinggi (Lembaran Negara Republik Indonesia Tahun 2014, Nomor 16, tambahan Lembaran Negara Republik Indonesia Nomor 5500);
3. Peraturan Presiden Nomor 13 Tahun 2015 tentang Kementerian Riset, Teknologi, dan Pendidikan Tinggi (Lembaran Negara Republik Indonesia Tahun 2015 Nomor 14);
4. Keputusan Presiden Nomor 121/P Tahun 2014 tentang Pembentukan Kementerian dan Pengangkatan Menteri Kabinet Kerja Periode Tahun 2014-2019;
5. Keputusan Presiden Nomor 99/M Tahun 2015 tentang Pemberhentian dan Pengangkatan Dari dan Dalam Jabatan Pimpinan Tinggi Madya di Lingkungan Kementerian Riset, Teknologi, dan Pendidikan Tinggi;

6. Peraturan Menteri Keuangan Republik Indonesia Nomor 49/PMK.02/2017 tentang Standar Biaya Masukan Tahun Anggaran 2018;
7. Peraturan Menteri Riset, Teknologi dan Pendidikan Tinggi Nomor 15 Tahun 2015 tentang Organisasi dan Tata Kerja Kementerian Riset, Teknologi dan Pendidikan Tinggi (Berita Negara Republik Indonesia Tahun 2015 Nomor 889);
8. Peraturan Menteri Riset, Teknologi, dan Pendidikan Tinggi Nomor 9 Tahun 2018 tentang Akreditasi Jurnal Ilmiah; (Berita Negara Republik Indonesia Tahun 2018 Nomor 428);

MEMUTUSKAN:

- Menetapkan : KEPUTUSAN DIREKTUR JENDERAL PENGUATAN RISET DAN PENGEMBANGAN KEMENTERIAN RISET, TEKNOLOGI, DAN PENDIDIKAN TINGGI TENTANG PERINGKAT AKREDITASI JURNAL ILMIAH PERIODE II TAHUN 2018.
- KESATU : Menetapkan Peringkat Akreditasi Jurnal Ilmiah Periode II Tahun 2018 sebagaimana tercantum dalam Lampiran yang merupakan bagian yang tidak terpisahkan dari Keputusan Direktur Jenderal ini.
- KEDUA : Akreditasi Jurnal Ilmiah sebagaimana dimaksud dalam Diktum KESATU berlaku selama 5 (lima) tahun sejak dinilai baik oleh Tim Akreditasi Jurnal Ilmiah.
- KETIGA : Akreditasi Jurnal Ilmiah sebagaimana dimaksud dalam Diktum KESATU dapat mengajukan kembali kenaikan peringkat setelah menerbitkan minimal 1 (satu) nomor penerbitan.
- KEEMPAT : Setiap jurnal ilmiah wajib mencantumkan masa berlaku akreditasi dengan menuliskan tanggal penetapan dan tanggal akhir masa berlaku akreditasi.
- KELIMA : Apabila dikemudian hari ditemukan ketidaksesuaian dengan Pedoman Akreditasi Jurnal Ilmiah, maka status akreditasi jurnal ilmiah yang bersangkutan dapat dicabut atau diturunkan.
- KEENAM : Keputusan Direktur Jenderal ini mulai berlaku pada tanggal ditetapkan.

Ditetapkan di Jakarta  
pada tanggal 24 Oktober 2018  
DIREKTUR JENDERAL  
PENGUATAN RISET DAN PENGEMBANGAN,

TTD.

MUHAMMAD DIMYATI  
NIP 195912171984041001

Salinan sesuai dengan aslinya,  
Direktorat Jenderal Penguatan Riset dan Pengembangan  
Kementerian Riset, Teknologi, dan Pendidikan Tinggi  
Kepala Bagian Hukum, Kerjasama, dan Layanan Informasi,

TTD.

Syarip Hidayat  
NIP 197306101997031004

SALINAN  
LAMPIRAN  
KEPUTUSAN DIREKTUR JENDERAL  
PENGUATAN RISET DAN PENGEMBANGAN  
KEMENTERIAN RISET, TEKNOLOGI, DAN  
PENDIDIKAN TINGGI  
NOMOR 30/E/KPT/2018  
TENTANG PERINGKAT AKREDITASI JURNAL  
ILMIAH PERIODE II TAHUN 2018

PERINGKAT AKREDITASI JURNAL ILMIAH PERIODE II TAHUN 2018

Peringkat	No	Nama Jurnal	E-ISSN	Penerbit
Peringkat 1 (Satu)	1	Acta Medica Indonesiana	23382732	PB PAPDI (Perhimpunan Dokter Spesialis Penyakit Dalam Indonesia)
	2	AJAS (Agrivita Journal of agricultural science)	24778516	Fakultas Pertanian, Universitas Brawijaya
	3	Al-Jami'ah: Journal of Islamic Studies	2338557X	Universitas Islam Negeri Sunan Kalijaga
	4	Atom Indonesia	23565322	Badan Tenaga Nuklir Nasional
	5	Biodiversitas : Journal of Biolodical Diversity	20854722	Jurusan Biologi Fakultas Matematika dan Ilmu Pengetahuan Alam Universitas Sebelas Maret
	6	BIOTROPIA	1907770X	SEAMEO-BIOTROP
	7	Bulletin of Electrical Engineering and Informatics	23029285	Universitas Ahmad Dahlan
	8	Cakrawala Pendidikan	24428620	Lembaga Pengembangan dan Penjaminan Mutu Pendidikan UNY
	9	Electronic Journal of Graph Theory and Applications	23382287	Indonesian Combinatorial Society (InaCombS), Institut Teknologi Bandung (ITB) Indonesia dan GTA Research Centre, The University of Newcastle Australia
	10	<i>Gajah Mada International Journal of Business</i>	23387238	Fakultas Ekonomika dan Bisnis Universitas Gadjah Mada
	11	HAYATI Journal of Biosciences	20864094	Perhimpunan Biologi Indonesia bekerja sama dengan Departemen Biologi Fakultas Matematika dan Ilmu Pengetahuan Alam Institut Pertanian Bogor
	12	<i>IJAIN (International Journal of Advances in Intelligent Informatics)</i>	25483161	Universitas Ahmad Dahlan
	13	<i>IJASEIT (International Journal on Advanced Science, Engineering and Information Technology)</i>	24606952	INSIGHT -Indonesian Society for Knowledge and Human Development

14	IJOG : Indonesian Journal on Geoscience	23559306	Sekretariat Badan Geologi
15	Indonesian Journal of Geography	23549114	Faculty of Geography UGM and The Indonesian Geographers Association
16	Indonesian Journal of Islam and Muslim Societies	2406825X	Program Pascasarjana, IAIN Salatiga
17	<i>Indonesian Journal of Pharmacy</i>	23389486	Fakultas Farmasi, Universitas Gadjah Mada
18	<i>Indonesian Journal of Science and Technology</i>	25278045	Universitas Pendidikan Indonesia
19	International Journal of Technology	20872100	Faculty of Engineering Universitas Indonesia
20	<i>International Journal on Electrical Engineering and Informatics</i>	20875886	Institut Teknologi Bandung
21	Journal of Engineering and Technological Sciences	23385502	Lembaga Penelitian dan Pengabdian kepada Masyarakat (LPPM), Institut Teknologi Bandung
22	Journal of ICT Research and Applications	23385499	Lembaga Penelitian dan Pengabdian kepada Masyarakat (LPPM), Institut Teknologi Bandung
23	Journal of Mathematical and Fundamental Sciences	23385510	ITB Journal Publisher
24	Journal of Regional and City Planning	25026429	Lembaga Penelitian dan Pengabdian kepada Masyarakat, Institut Teknologi Bandung
25	Journal of the Indonesian Tropical Animal Agriculture	24606278	Fakultas Peternakan dan Pertanian UNDIP
26	Journal on Mathematics Education	24070610	The Indonesian Mathematical Society
27	Jurnal Manajemen Hutan Tropika	20892063	Departemen Manajemen Hutan Fakultas Kehutanan IPB dan Persatuan Sarjana Kehutanan Indonesia
28	Jurnal Pendidikan IPA Indonesia	20894392	Fakultas Matematika dan Ilmu Pengetahuan Alam Universitas Negeri Semarang
29	Jurnal Respirologi Indonesia	26203162	Perhimpunan Dokter Paru Indonesia
30	Microbiology Indonesia	20878575	Perhimpunan Mikrobiologi Indonesia (Indonesian Society of Microbiology)
31	Operations and Supply Chain Management: An International Journal	25799363	Pusat Publikasi Ilmiah LPPM Institut Teknologi Sepuluh Nopember
32	Paramita: Historical Studies Journal	24075825	Jurusan Sejarah, Fakultas Ilmu Sosial, Universitas Negeri Semarang dan

			Masyarakat Sejarawan Indonesia
33	<i>QJIS (Qudus International Journal Of Islamic Studies)</i>	24769304	Pusat Penelitian dan Pengabdian Masyarakat (P3M) STAIN KUDUS
34	Studia Islamika	23556145	UIN Syarif Hidayatullah Jakarta
35	TEFLIN Journal	0215773X	TEFLIN (The Association of Teachers of English as a Foreign Language in Indonesia)
36	<i>Tropical Animal Science Journal (Media Peternakan)</i>	2615790X	Fakultas Peternakan Institut Pertanian Bogor dan Himpunan Ilmuwan Peternakan Indonesia
37	Wacana, Journal of the Humanities of Indonesia	24076899	Universitas Indonesia
Peringkat 2 (Dua)	1	Aceh International Journal of Science and Technology	Program Pascasarjana, Universitas Syiah Kuala
	2	Acta Veterinaria Indonesiana	Fakultas Kedokteran Hewan IPB
	3	Adabiyat : Jurnal Bahasa dan Sastra	Fakultas Adab dan Ilmu Budaya Univ. Islam Negeri Sunan Kalijaga
	4	Addin	STAIN Kudus
	5	AFKARUNA: Indonesian Interdisciplinary Journal of Islamic Studies	Universitas Muhammadiyah Yogyakarta
	6	Agraris : Journal of Agribusiness and Rural Development Research	Program Studi Agribisnis, Fakultas Pertanian, Universitas Muhammadiyah Yogyakarta
	7	Agritech	Fakultas Teknologi Pertanian, Universitas Gadjah Mada
	8	Ahkam: Jurnal Ilmu Syariah	Fakultas Syariah dan Hukum, Universitas Syarif Hidayatullah Jakarta
	9	AKADEMIKA: Jurnal Pemikiran Islam	Lembaga Penelitian dan Pengabdian kepada Masyarakat Institut Agama Islam Negeri Metro
	10	Aksara	Balai Bahasa Bali
	11	Al-'Adalah	Fakultas Syariah Universitas Islam Negeri Raden Intan Lampung
	12	Al-Ahkam	Fakultas Syariah dan Hukum, Universitas Islam Walisongo Semarang
	13	ALCHEMY Jurnal Penelitian Kimia	Universitas Sebelas Maret

14	Al-Daulah : Jurnal Hukum dan Perundangan Islam	25030922	Program Studi Siyasah Jinayah, Fakultas Syariah dan Hukum, Universitas Islam Negeri Sunan Ampel Surabaya
15	Al-Ihkam: Jurnal Hukum dan Pranata Sosial	24423084	Jurusan Syariah STAIN Pamekasan
16	Al-Iqtishad : Jurnal Ilmu Ekonomi Syariah (Journal of Islamic Economics)	24078654	UIN Syarif Hidayatullah Jakarta bekerjasama DPP Ikatan Ahli Ekonomi Islam Indonesia
17	Al-Manahij : Jurnal Kajian Hukum Islam	25794167	Fakultas Syariah IAIN Purwokerto
18	Al-Qalam	2540895X	Balai Penelitian dan Pengembangan Agama Makassar
19	Al-Risalah : Forum Kajian Hukum dan Sosial Kemasyarakatan	25409522	Fakultas Syariah Institut Agama Islam Negeri Sulthan Thaha Saifuddin Jambi
20	Al-Tahrir : Jurnal Pemikiran Islam	25022210	IAIN Ponorogo
21	Al-Ta'lim Journal	23557893	Fakultas Tarbiyah dan Keguruan IAIN Imam Bonjol Padang
22	Anima	26205963	Laboratorium Psikologi Umum Universitas Surabaya
23	Animal Production	25415875	Fakultas Peternakan Universitas Jenderal Soedirman
24	APMBA (Asia Pacific Management and Business Application)	26152010	Jurusan Manajemen FEB Universitas Brawijaya
25	Arabiyat: Jurnal Pendidikan Bahasa Arab dan Kebahasaaraban	24429473	Jurusan Pendidikan Bahasa Arab Fakultas Ilmu Tarbiyah dan Keguruan UIN Syarif Hidayatullah
26	Arena Hukum	25274406	Fakultas Hukum, Universitas Brawijaya
27	Asy-Syir'ah Jurnal Ilmu Syari'ah dan Hukum	24430757	Fakultas Syari'ah dan Hukum UIN Sunan Kalijaga
28	Balaba: Jurnal Litbang Pengendalian Penyakit Bersumber Binatang Banjarnegara	23389982	Balai Penelitian dan Pengembangan Kesehatan Banjarnegara
29	Berkala Ilmu Kedokteran (Journal of the Medical Sciences)	23563931	Fakultas Kedokteran Universitas Gadjah Mada Yogyakarta
30	Berkala Ilmu Kesehatan Kulit dan Kelamin (Periodical of Dermatology and Venerology)	25494082	Departemen/Staf Medik Fungsional Kesehatan Kulit Dan Kelamin Fakultas Kedokteran Universitas Airlangga
31	Berkala Ilmu Perpustakaan dan Informasi	24770361	UPT Perpustakaan UGM

32	Berkala Penelitian Hayati (Journal of Biological Researchers)	2337389X	Perhimpunan Biologi Indonesia (PBI) Cabang Jawa Timur
33	<i>Binus Business Review</i>	24769053	Universitas Bina Nusantara
34	Biopropal Industri	25022962	Balai Riset dan Standardisasi Industri Pontianak
35	BIOSAINTIFIKA: Berkala Ilmiah Biologi	23387610	Jurusan Biologi, Fakultas Matematika dan Ilmu Pengetahuan, Universitas Negeri Semarang
36	BISNIS & BIROKRASI : Jurnal Ilmu Administrasi dan Organisasi	23557826	Pusat Kajian Ilmu Administrasi, Fakultas Ilmu Administrasi, Universitas Indonesia
37	Brawijaya Law Journal : Journal of Legal Studies	25030841	Fakultas Hukum, Universitas Brawijaya
38	Buletin Ekonomi Moneter Perbankan	24609196	Pusat Riset dan Edukasi Bank Sentral. Bank Indonesia
39	Buletin Kebun Raya (The Botanic Garden Bulletin)	24601519	Pusat Konservasi Tumbuhan Kebun Raya - LIPI
40	Buletin Penelitian Sistem Kesehatan	23548738	Pusat Humaniora Kebijakan Kesehatan dan Pemberdayaan Masyarakat, Badan Penelitian dan Pengembangan Kesehatan
41	Buletin Penelitian Tanaman Rempah dan Obat	25274414	Pusat Penelitian dan Pengembangan Perkebunan, Kementerian Pertanian
42	Buletin Peternakan	2407876X	Fakultas Peternakan Universitas Gadjah Mada
43	Celt : A Journal of Culture, English Language Teaching and Literature	25024914	Fakultas Bahasa dan Seni, Universitas Katolik Soegijapranata
44	<i>Civil Engineering Dimension</i>	1979570X	Universitas Kristen Petra
45	CommIT (Communication and Information Technology) Journal	24607010	Universitas Bina Nusantara
46	Dental Journal (Majalah Kedokteran Gigi)	24429740	Fakultas Kedokteran Gigi Universitas Airlangga
47	Dentika : Dental Journal	2615854X	Fakultas Kedokteran Gigi USU
48	DIMENSI: Journal of Architecture and Built Environment	23387858	LPPM Universitas Kristen Petra Surabaya
49	Dinamika Ilmu: Jurnal Pendidikan	24429651	Fakultas Tarbiyah dan Ilmu Keguruan IAIN Samarinda
50	Dinamika Kerajinan dan Batik : Majalah Ilmiah	25286196	Balai Besar Kerajinan dan Batik
51	Dinamika Pendidikan	25025074	Jurusan Pendidikan Ekonomi Universitas

			Negeri Semarang (UNNES)
52	Economic Journal of Emerging Markets	2502180X	Universitas Islam Indonesia
53	Edukasia: Jurnal Penelitian Pendidikan Islam	25023039	Program Studi Pendidikan Agama Islam Jurusan Tarbiyah STAIN Kudus
54	EDUSAINS	24431281	Jurusan Pendidikan IPA Fakultas Ilmu Tarbiyah dan Keguruan UIN Hidayatullah Jakarta
55	Eksplorium : Buletin Pusat Pengembangan Bahan Galian Nuklir	2503426X	Pusat Teknologi Bahan Galian Nuklir Jakarta
56	EKUITAS : Jurnal Ekonomi dan Keuangan	25485024	Sekolah Tinggi Ilmu Ekonomi Indonesia Surabaya
57	el Harakah: Jurnal Budaya Islam	23561734	Universitas Islam Negeri Maulana Malik Ibrahim Malang
58	ELKOMIKA: Jurnal Teknik Energi Elektrik, Teknik Telekomunikasi, & Teknik Elektronika	24599638	Teknik Elektro Institut Teknologi Nasional
59	EMITTER : <i>International Journal of Engineering Technology</i>	24431168	Politeknik Elektronika Negeri Surabaya
60	Epistemé : Jurnal Pengembangan Ilmu Keislaman	25023705	Pascasarjana IAIN Tulungagung
61	Esensia : Jurnal Ilmu-Ilmu Ushuluddin	25484729	Fakultas Ushuluddin dan Pemikiran Islam UIN Sunan Kalijaga
62	Etikonomi	24610771	Fakultas Ekonomi dan Bisnis UIN Syarif Hidayatullah Jakarta
63	Floribunda	24606944	Penggalang Taksonomi Tumbuhan Indonesia
64	Folia Medica Indonesiana	2599056X	Fakultas Kedokteran Universitas Airlangga
65	Forum Arkeologi	25276832	Balai Arkeologi Bali
66	Forum Geografi	24603945	Fakultas Geografi UMS
67	Ganendra : Majalah IPTEK Nuklir	25035029	Pusat Sains Dan Teknologi Akselerator (PSTA) Badan Tenaga Nuklir Nasional (BATAN) Yogyakarta
68	Geoplanning : Journal of Geomatics and Planning	23556544	Geomatics and Planning Laboratory, Departement of Urban and Regional Planning, Diponegoro University
69	Global Medical and Health Communication	24605441	Pusat Penerbitan Universitas-Lembaga Penelitian dan Pengembangan Masyarakat (P2U-LPPM) Fakultas Kedokteran



			Universitas Islam Bandung
70	Global Strategis	24429600	Department of International Relations, Faculty of Social and Politics, Universitas Airlangga
71	Harmonia : Journal of Arts Research and Education	25412426	Department of Drama, Dance and Music, Faculty of Language and Arts, Universitas Negeri Semarang
72	Hasanuddin Law Review	24429899	Fakultas Hukum Universitas Hassanudin
73	HSJI (Health Science Journal of Indonesia)	23383437	Badan Penelitian dan Pengembang Kesehatan Kementerian Kesehatan
74	Humanitas: Indonesian Psychological Journal	25986368	Fakultas Psikologi Universitas Ahmad Dahlan
75	IBDA` : Jurnal Kajian Islam dan Budaya	24775517	LPPM IAIN Purwokerto
76	IJCCS ( <i>Indonesian Journal of Computing and Cybernetics Systems</i> )	24607258	Indonesian Computer, Electronics, and Instrumentation Support Society (IndoCEISS)
77	IJEIS ( <i>Indonesian Journal of Electronics and Instrumentation Systems</i> )	24607681	Indonesian Computer, Electronics and Instrumentation Support Society (IndoCEISS)
78	ILMU KELAUTAN: Indonesian Journal of Marine Sciences	24067598	Jurusan Ilmu Kelautan Fakultas Perikanan dan Ilmu Kelautan Universitas Diponegoro
79	Ilmu Pertanian ( <i>Agricultural Science</i> )	25277162	Fakultas Pertanian Universitas Gadjah Mada
80	Ilmu Ushuluddin	25027530	Himpunan Peminat Ilmu Ushuluddin (HIPIUS) bekerjasama dengan Fakultas Ushuluddin UIN Syarif Hidayatullah Jakarta
81	Indonesia Law Review	23562129	Djokosoetono Research Center (DRC) Faculty of Law University of Indonesia
82	Indonesian Capital Market Review (ICMR)	23563818	Management Research Center (MRC), Fakultas Ekonomi dan Bisnis Universitas Indonesia
83	Indonesian Journal of Business and Entrepreneurship	24077321	Graduate Program of Management and Business, Bogor Agricultural University (MB-IPB)
84	Indonesian Journal of Clinical Pathology and Medical Laboratory	24774685	Perhimpunan Dokter Spesialis Patologi Klinik Indonesia
85	Indonesian Journal of Obstetrics and Gynecology	23387335	Perkumpulan Obstetri dan Ginekologi Indonesia

	(Majalah Obstetri dan Ginekologi Indonesia)		
86	Indonesian Journal of Tropical and Infectious Disease	23560991	Lembaga Penyakit Tropis Universitas Airlangga
87	Indonesian Journal of Urology	23551402	Ikatan Ahli Urologi Indonesia (IAUI)
88	Industria : Jurnal Teknologi dan Manajemen Agroindustri	25493892	Jurusan Teknologi Industri Pertanian, Fakultas Teknologi Pertanian, Universitas Brawijaya
89	Inferensi : Jurnal Penelitian Sosial Keagamaan	25021427	LP2M Institut Agama Islam Negeri (IAIN) Salatiga
90	Inovasi : Jurnal Politik dan Kebijakan	26148935	Badan Penelitian dan Pengembangan Provinsi Sumatera Utara
91	<i>International Journal of Agriculture System (IJAS)</i>	25806815	Universitas Hasanuddin
92	International Journal of Remote Sensing and Earth Sciences	2549516X	Lembaga Penerbangan dan Antariksa Nasional (LAPAN)
93	International Journal of Renewable Energy Development : JRED	22524940	Jurusan Teknik Kimia Universitas Diponegoro
94	International Journal on Emerging Mathematics Education	25485806	Universitas Ahmad Dahlan bekerjasama dengan SEAMEO Regional Centre for QITEP in Mathematics
95	International Research Journal of Business Studies	23384565	Universitas Prasetiya Mulya
96	Iqtishadia: Jurnal Kajian Ekonomi dan Bisnis Islam	25023993	Program Studi Ekonomi Syari'ah Jurusan Syaria'h dan Ekonomi Islam Sekolah Tinggi Agama Islam Negeri (STAIN) Kudus
97	Islamica: Jurnal Studi Keislaman	23562218	Program Pascasarjana UIN Sunan Ampel Surabaya
98	Istinbath	18296505	Jurusan Syari'ah, Sekolah Tinggi Agama Islam Negeri Mataram
99	JAI (Jurnal Anestesiologi Indonesia)	2089970X	Universitas Diponegoro. Bagian Anestesiologi dan Terapi Intensif
100	JAM : Jurnal Aplikasi Manajemen	23026332	Jurusan Manajemen, FEB, Universitas Brawijaya
101	Jantra	19079605	Balai Kajian Sejarah dan Nilai Tradisional Yogyakarta
102	JAS (Journal of ASEAN Studies)	23381353	Universitas Bina Nusantara
103	JDM (Jurnal Dinamika Manajemen)	23375434	Jurusan Manajemen, Fakultas Ekonomi, Universitas Negeri Semarang

104	JEJAK : Jurnal Ekonomi dan Kebijakan	24605123	Jurusan Ekonomi Pembangunan Falkutas Ekonomi Universitas Negeri Semarang
105	JGEET (Journal of Geoscience, Engineering, Environment and Technology)	25415794	UIR PRESS
106	JKAP (Jurnal Kebijakan dan Administrasi Publik)	24774693	Magister Administrasi Publik FISIPOL UGM
107	JKKI : Jurnal Kedokteran dan Kesehatan Indonesia	25272950	Fakultas Kedokteran, Universitas Islam Indonesia
108	JNTETI (Jurnal Nasional Teknik Elektro dan Teknologi Informasi)	24605719	Jurusan Teknik Elektro dan Teknologi Informasi Fakultas Teknik UGM
109	Journal of Biomedicine and Translational Research	25032178	Fakultas Kedokteran, Universitas Diponegoro
110	Journal of Degraded and Mining Lands Management	25022458	Fakultas Pertanian, Universitas Brawijaya
111	Journal of Dentistry Indonesia	23554800	Fakultas Kedokteran Gigi Universitas Indonesia
112	<i>Journal of Economics, Business, &amp; Accountancy</i>	2888785X	Sekolah Tinggi Ilmu Ekonomi Perbanas Surabaya
113	Journal of Education and Learning	23029277	Universitas Ahmad Dahlan Yogyakarta
114	<i>Journal of Indonesian Economy and Business</i>	23385847	Fakultas Ekonomi dan Bisnis, UGM
115	Journal of Islamic Architecture	23564644	Jurusan Teknik Arsitektur UIN Maulana Malik Ibrahim Malang
116	Journal of Mechatronics, Electrical Power, and Vehicular Technology	20886985	Pusat Penelitian Tenaga Listrik dan Mekatronik Lembaga Ilmu Pengetahuan Indonesia
117	Journal of Tropical Life Science : International Journal of Theoretical, Experimental, and Applied Life Sciences	25274376	Jurusan Biologi, Fakultas Matematika dan Ilmu Pengetahuan Alam, Universitas Brawijaya
118	<i>Journal of Urban Society's Arts</i>	2355214X	Institut Seni Indonesia Yogyakarta
119	<i>Journal of Visual Art and Design</i>	23385480	Lembaga Penelitian dan Pengabdian kepada Masyarakat (LPPM), Institut Teknologi Bandung
120	JPBI (Jurnal Pendidikan Biologi Indonesia)	25276204	Universitas Muhammadiyah Malang
121	JRP (Jurnal Review Politik)	26156504	Fakultas Ushuluddin dan Filsafat UIN Sunan Ampel Surabaya
122	JSINBIS (Jurnal Sistem Informasi Bisnis)	25022377	Program Magister Sistem Informasi Universitas Diponegoro
123	JSP (Jurnal Ilmu Sosial dan Ilmu Politik)	25027883	Fakultas Ilmu Sosial dan Ilmu Politik, Universitas Gadjah Mada

124	JTEP (Jurnal Keteknikan Pertanian)	23388439	Perhimpunan Teknik Pertanian Indonesia (PERTETA) bekerjasama dengan Departemen Teknik Mesin dan Biosistem, FATETA, Institut Pertanian Bogor
125	Jurnal Agro	24077933	Jurusan Agroteknologi Fakultas Sains dan Teknologi UIN Sunan Gunung Djati Bandung
126	Jurnal Agronomi Indonesia (Indonesian Journal of Agronomy)	23373652	Perhimpunan Agronomi Indonesia dan Departemen Agronomi dan Hortikultura, Fakultas Pertanian Institut Pertanian Bogor
127	Jurnal Akuakultur Indonesia	23546700	Departemen Budidaya Perairan, Fakultas Perikanan dan Ilmu Kelautan, Institut Pertanian Bogor dan Indonesian Society for Scientific Aquaculture
128	Jurnal Akuntansi	25498800	Fakultas Ekonomi Universitas Tarumanagara
129	Jurnal Akuntansi dan Auditing Indonesia	25286528	Program Studi Akuntansi, Fakultas Ekonomi, Universitas Islam Indonesia Yogyakarta
130	Jurnal Akuntansi dan Keuangan	23388137	Program Studi Akuntansi, Fakultas Ekonomi, Universitas Kristen Petra Surabaya
131	Jurnal Akuntansi dan Keuangan Indonesia	24069701	Departemen Akuntansi Fakultas Ekonomi dan Bisnis Universitas Indonesia
132	Jurnal Analisis Kebijakan Kehutanan	25026267	Pusat Penelitian dan Pengembangan Sosial, Ekonomi, Kebijakan dan Perubahan Iklim
133	Jurnal Anestesi Perioperatif (Perioperative Anesthesia Journal)	23388463	Fakultas Kedokteran, Universitas Padjadjaran
134	Jurnal Aplikasi Bisnis dan Manajemen (JABM)	24607819	Program Pascasarjana Manajemen dan Bisnis, Institut Pertanian Bogor (MB-IPB)
135	Jurnal Aplikasi Statistika dan Komputasi Statistik	26151367	Sekolah Tinggi Ilmu Statistik
136	Jurnal Aplikasi Teknologi Pangan	24605921	Indonesian Food Technologists
137	Jurnal Bahan Alam Terbarukan	24072370	Program Studi Teknik Kimia UNNES
138	Jurnal Bimas Islam	19789009	Direktorat Jenderal Bimbingan Masyarakat Islam, Kementerian Agama

139	Jurnal Bioteknologi dan Biosains Indonesia	2548611X	Kedeputian Bidang Teknologi Agroindustri dan Bioteknologi - BPPT
140	Jurnal Bisnis dan Manajemen	24424617	Departemen Manajemen dan Bisnis, Fakultas Ekonomi dan Bisnis, UNPAD
141	Jurnal Ekologi Kesehatan	23548754	Pusat Teknologi Intervensi Kesehatan Masyarakat, Badan Penelitian dan Pengembangan Kesehatan
142	Jurnal Ekonomi dan Bisnis	25280147	Fakultas Ekonomika dan Bisnis Universitas Kristen Satya Wacana
143	Jurnal Ekonomi dan Pembangunan Indonesia	24069280	Departemen Ilmu Ekonomi Fakultas Ekonomi dan Bisnis Universitas Indonesia
144	Jurnal Ekonomi Kuantitatif Terapan	23030186	Jurusan Ekonomi Pembangunan Fakultas Ekonomi Universitas Udayana
145	Jurnal Ekonomi Pembangunan	25030272	Lembaga Ilmu Pengetahuan Indonesia
146	Jurnal Ekonomi Pembangunan : Kajian Masalah Ekonomi dan Pembangunan	24609331	Lembaga Pengembangan Publikasi Ilmiah, Universitas Muhammadiyah Surakarta
147	Jurnal Elektronika dan Telekomunikasi	25279955	Pusat Penelitian Elektronika dan Telekomunikasi, Lembaga Ilmu Pengetahuan Indonesia
148	Jurnal Entomologi Indonesia	20890257	Pengurus Pusat Perhimpunan Entomologi Indonesia
149	Jurnal Farmasi Indonesia	2355696X	Pengurus Pusat Ikatan Apoteker Indonesia
150	Jurnal Farmasi Klinik Indonesia	23375701	Program Magister Farmasi Klinik, Universitas Padjadjaran
151	Jurnal Farmasi Sains dan Komunitas (Journal of Pharmaceutical Sciences and Community)	25277146	Fakultas Farmasi Universitas Sanata Dharma
152	Jurnal Fitopatologi Indonesia	23392479	Perhimpunan Fitopatologi Indonesia
153	Jurnal Gizi dan Pangan	24070920	Departemen Gizi Masyarakat, Fakultas Ekologi Manusia, Institut Pertanian Bogor bekerjasama dengan Perhimpunan Peminat Gizi dan Pangan Indonesia (PERGIZI PANGAN) Indonesia
154	Jurnal Gizi Klinik Indonesia	25024140	Prodi S2 Ilmu Kesehatan Masyarakat, Fakultas

			Kedokteran, Universitas Gadjah Mada
155	Jurnal Hama dan Penyakit Tumbuhan Tropika	24610399	Universitas Lampung
156	Jurnal Hortikultura Indonesia (JHI)	26142872	Perhimpunan Hortikultura Indonesia
157	Jurnal Hubungan Internasional	25033883	rogram Studi Hubungan Internasional, Universitas Muhammadiyah Yogyakarta (UMY)
158	Jurnal Hukum & Pembangunan	25031465	Fakultas Hukum, Universitas Indonesia
159	Jurnal Hukum dan Peradilan	25281100	Pusat Penelitian dan Pengembangan Hukum dan Peradilan, Mahkamah Agung RI
160	Jurnal Hukum Internasional : Indonesian Journal of International Law	23565527	Fakultas Hukum Universitas Indonesia
161	Jurnal Hukum IUS QUIA IUSTUM	2527502X	Fakultas Hukum, Universitas Islam Indonesia Yogyakarta
162	Jurnal Iktiologi Indonesia	25798634	Masyarakat Iktiologi Indonesia
163	Jurnal Ilmiah Islam Futura	24077542	Program Pascasarjana UIN Ar-Raniry Banda Aceh
164	Jurnal Ilmiah Kursor	23016914	Fakultas Teknik, Universitas Trunojoyo Madura
165	Jurnal Ilmiah Peuradeun: Media Kajian Ilmiah Sosial, Politik, Hukum, Agama dan Budaya	24432067	The International Journal of Social Sciences
<b>166</b>	<b>Jurnal Ilmu Kefarmasian Indonesia</b>	<b>26146495</b>	<b>Fakultas Farmasi Universitas Pancasila</b>
167	Jurnal Ilmu Kehutanan	24773751	Fakultas Kehutanan Universitas Gadjah Mada
168	Jurnal Ilmu Keluarga dan Konsumen	25023594	Departemen Ilmu Keluarga dan Konsumen, Fakultas Ekologi Manusia, Institut Pertanian Bogor
169	Jurnal Ilmu Komputer dan Informasi (Journal of Computer Science and Information)	25029274	Fakultas Ilmu Komputer, Universitas Indonesia
170	Jurnal Ilmu Komunikasi	24078220	Jurusan Ilmu Komunikasi, Fakultas Ilmu Politik dan Ilmu Sosial, Universitas Pembangunan Nasional (UPN) "Veteran" Yogyakarta
171	Jurnal Ilmu Komunikasi	25488643	Prodi Ilmu Komunikasi FISIP Universitas Atma Jaya Yogyakarta

172	Jurnal Ilmu Lingkungan	18298907	Program Studi Magister Ilmu Lingkungan Sekolah Pascasarjana Universitas Diponegoro
173	Jurnal Ilmu Pendidikan	24428655	Universitas Negeri Malang
174	Jurnal Ilmu Pertanian Indonesia	24433462	Lembaga Penelitian dan Pengabdian kepada Masyarakat Institut Pertanian Bogor
175	Jurnal Ilmu Sosial	25484893	Fakultas Ilmu Sosial dan Ilmu Politik Universitas Diponegoro
176	Jurnal Ilmu Teknologi Kayu Tropis	16933834	Masyarakat Peneliti Kayu Indonesia
177	Jurnal Industri Hasil Perkebunan (Journal of Plantation Based Industry)	24770051	Balai Besar Industri Hasil Perkebunan
178	Jurnal IUS : Kajian Hukum dan Keadilan	2477815X	Magister Ilmu Hukum Universitas Mataram
179	Jurnal Kajian Bali (Journal of Bali Studies)	25800698	Pusat Kajian Bali Universitas Udayana
180	Jurnal Kajian Komunikasi	24775606	Lembaga Penelitian, Pengabdian, dan Penerbitan Fikom Universitas Padjadjaran
181	Jurnal Kardiologi Indonesia	26204762	Perhimpunan Dokter Spesialis Kardiovaskular Indonesia
182	Jurnal Kawistara Jurnal Ilmu Sosial dan Humaniora	23555777	Sekolah Pascasarjana Universitas Gadjah Mada
183	Jurnal Kebijakan Sosial Ekonomi Kelautan dan Perikanan	25273280	Pusat Penelitian Sosial Ekonomi Kelautan dan Perikanan
184	Jurnal Kedokteran Brawijaya	23380772	Fakultas Kedokteran Universitas Brawijaya
185	Jurnal Kedokteran Hewan	25025600	Fakultas Kedokteran Hewan, Universitas Syiah Kuala
186	Jurnal Kelautan Tropis	25283111	Fakultas Perikanan dan Ilmu Kelautan Universitas Diponegoro
187	Jurnal Kependidikan: Penelitian Inovasi Pembelajaran	25805533	LPPM Universitas Negeri Yogyakarta
188	Jurnal Kependudukan Indonesia	25028537	Pusat Penelitian Kependudukan, Lembaga Ilmu Pengetahuan Indonesia
189	Jurnal Keperawatan Indonesia	23549203	Fakultas Ilmu Keperawatan Universitas Indonesia
190	Jurnal Keperawatan Padjadjaran	24427276	Fakultas Keperawatan Universitas Padjadjaran
191	Jurnal Kesehatan Lingkungan Indonesia	25027085	Program Studi Magister Kesehatan Lingkungan, Fakultas Kesehatan Masyarakat, Universitas Diponegoro

192	Jurnal Kesehatan Reproduksi	23548762	Pusat Penelitian dan Pengembangan Upaya Kesehatan Masyarakat, Badan Penelitian dan Pengembangan Kesehatan, Kemenkes RI
193	Jurnal Ketahanan Nasional	25279688	Program Studi Ketahanan Nasional, Pascasarjana, Universitas Gadjah Mada yang bekerjasama dengan Lembaga Ketahanan Nasional (Lemhannas)
194	Jurnal Keuangan dan Perbankan	24432687	Universitas Merdeka Malang
195	Jurnal Kimia dan Kemasan	25499424	Balai Besar Kimia dan Kemasan Kementerian Perindustrian
196	Jurnal Kimia Valensi	25483013	Program Studi Kimia Fakultas Sains dan Teknologi Universitas Islam Negeri (UIN) syarif Hidayatullah Jakarta
197	Jurnal Komunikasi ASPIKOM	25488309	Divisi Litbang ASPIKOM
198	Jurnal Komunikasi Islam	20886314	Jurusan Komunikasi dan Penyiaran Islam Fakultas Dakwah IAIN Sunan Ampel Surabaya
199	Jurnal Magister Hukum Udayana (Udayana Master Law Journal)	25023101	Fakultas Hukum Universitas Udayana
200	Jurnal Manajemen	25498797	Fakultas Ekonomi Universitas Tarumanagara
201	Jurnal Manajemen & Agribisnis	24072524	Program Pascasarjana Manajemen dan Bisnis, Institut Pertanian Bogor bekerjasama Perhimpunan Ekonomi Pertanian Indonesia (PERHEPI)
202	Jurnal Manajemen dan Kewirausahaan	23388234	Program Studi Manajemen, Fakultas Ekonomi, Universitas Kristen Petra Surabaya
203	Jurnal Manajemen dan Pelayanan Farmasi (Journal of Management and Pharmacy Practice)	24432946	Pascasarjana Fakultas Farmasi Universitas Gadjah Mada
204	Jurnal Manajemen Teknologi : Indonesian Journal for the Science of Management	20897928	Unit Research and Knowledge, Sekolah Bisnis dan Manajemen Institut Teknologi Bandung
205	Jurnal Manajemen, Strategi Bisnis, dan Kewirausahaan	23028890	Jurusan Manajemen, Fakultas Ekonomi, Universitas Udayana
206	Jurnal Neuroanestesi Indonesia	24602302	Indonesian Society of Neuroanesthesia and Critical Care INA-SNACC



207	Jurnal Pascapanen dan Bioteknologi Kelautan dan Perikanan	24069264	Balai Besar Penelitian dan Pengembangan Pengolahan Produk dan Bioteknologi Kelautan dan Perikanan
208	Jurnal Pendidikan : Teori, Penelitian, dan Pengembangan	2502471X	Pascasarjana Universitas Negeri Malang
209	Jurnal Pendidikan Islam	24608149	Fakultas Tarbiyah dan Keguruan UIN Sunan Gunung Djati Bandung Bekerjasama dengan ASPI Indonesia
210	Jurnal Pendidikan Islam	23563877	Fakultas Ilmu Tarbiyah dan Keguruan UIN Sunan Kalijaga Yogyakarta
211	Jurnal Pendidikan Kedokteran Indonesia : The Indonesian Journal of Medical Education	22525084	Asosiasi Institusi Pendidikan Kedokteran Indonesia
212	Jurnal Pendidikan Matematika	25491040	Program Studi Magister Pendidikan Matematika FKIP Universitas Sriwijaya
213	Jurnal Pendidikan Teknologi dan Kejuruan	24772410	Fakultas Teknik Universitas Negeri Yogyakarta
214	Jurnal Pendidikan Vokasi	24769401	Asosiasi Dosen dan Guru Vokasi Indonesia dan Program Pascasarjana UNY
215	Jurnal Penelitian dan Evaluasi Pendidikan	23386061	Program Pascasarjana Universitas Negeri Yogyakarta bekerjasama dengan Himpunan Evaluasi penelitian Indonesia
216	Jurnal Penelitian Hukum De Jure	25798561	Badan Penelitian dan Pengembangan Hukum dan HAM
217	Jurnal Penelitian Karet	25030469	Pusat Penelitian Karet - PT. Riset Perkebunan Nusantara
218	Jurnal Penelitian Kehutanan Wallacea	24077860	Balai Penelitian Kehutanan Makassar
219	Jurnal Penelitian Komunikasi	24600172	Balai Pengkajian dan Pengembangan Komunikasi dan Informatika (BPPKI) Bandung
220	Jurnal Penelitian Komunikasi dan Opini Publik	25274554	Balai Pengkajian dan Pengembangan Komunikasi dan Informatika (BPPKI) Manado
221	Jurnal Penelitian Politik	25027476	Pusat Penelitian Politik, Lembaga Ilmu Pengetahuan Indonesia (LIPI)
222	Jurnal Penelitian Pos dan Informatika	20889402	Pusat Penelitian dan Pengembangan Pos dan

			Informatika, Kementerian Kominfo
223	Jurnal Penelitian Transportasi Darat	25798731	Puslitbang Transportasi Jalan dan Perkeretaapian
224	Jurnal Penelitian Transportasi Multimoda	25798529	Pusat Penelitian dan Pengembangan Transportasi Antarmoda
225	Jurnal Pengajaran MIPA	24433616	FMIPA Universitas Pendidikan Indonesia
226	Jurnal Pengelolaan Sumberdaya Alam dan Lingkungan (Journal of Natural Resources and Environmental Management)	24605824	Sekolah Pascasarjana Institut Pertanian Bogor
227	Jurnal Pengembangan Energi Nuklir	25029479	Pusat Kajian Sistem Energi Nuklir (PKSEN) BATAN Jakarta
228	Jurnal Pengolahan Hasil Perikanan Indonesia	2354886x	Masyarakat Pengolahan Hasil Perikanan Indonesia
229	Jurnal Penyuluhan	24424110	Program Pascasarjana Ilmu Penyuluhan Pembangunan IPB bekerjasama dengan Perhimpunan Ahli Penyuluhan Pembangunan Indonesia
230	Jurnal Perbenihan Tanaman Hutan	25276565	Balai Penelitian Teknologi Perbenihan Tanaman Hutan Bogor
231	Jurnal Perempuan	25412191	Yayasan Jurnal Perempuan
232	Jurnal Perikanan Universitas Gadjah Mada	25025066	Departemen Perikanan Universitas Gadjah Mada
233	Jurnal Perlindungan Tanaman Indonesia	25484788	Departemen Hama dan Penyakit Tumbuhan, Fakultas Pertanian, Universitas Gadjah Mada
234	Jurnal PIKOM (Penelitian Komunikasi dan Pembangunan)	25490176	Balai Pengkajian dan Pengembangan Komunikasi dan Informatika (BPPKI) Medan
235	Jurnal Psikologi	2460867X	Fakultas Psikologi Universitas Gadjah Mada
236	Jurnal Psikologi	23021098	Fakultas Psikologi Universitas Diponegoro
237	Jurnal Reaktor	24075973	Jurusan Teknik Kimia Fakultas Teknik, Universitas Diponegoro
238	Jurnal Rechts Vinding : Media Pembinaan Hukum Nasional	25802364	Pusat Penelitian dan Pengembangan Sistem Hukum Nasional Badan Pembinaan Hukum Nasional Kementerian Hukum dan HAM RI

239	Jurnal Rekayasa Elektro	2252620X	Jurusan Teknik Elektro, Universitas Syiah Kuala
240	Jurnal Rekayasa Kimia dan Lingkungan ( <i>Journal of chemical engineering and environment</i> )	23561661	Jurusan Teknik Kimia, Universitas Syiah Kuala, Banda Aceh
241	Jurnal Rekayasa Proses	25491490	Fakultas Teknik Universitas Gadjah Mada
242	Jurnal Riset Pendidikan Matematika	24771503	Program Studi Pendidikan Matematika Program Pascasarjana Universitas Negeri Yogyakarta
243	Jurnal Sain Veteriner	24073733	Fakultas Kedokteran Hewan Universitas Gadjah Mada
244	Jurnal Segara	24611166	Pusat Penelitian dan Pengembangan Sumber Daya Laut dan Pesisir
245	Jurnal Selulosa	25276662	Balai Besar Pulp dan Kertas Bandung
246	Jurnal Siasat Bisnis	25287001	Fakultas Ekonomi, Universitas Islam Indonesia
247	Jurnal Sistem Informasi ( <i>Journal of Information System</i> )	25026631	Fakultas Ilmu Komputer, Universitas Indonesia
248	Jurnal Sosial Ekonomi Kelautan dan Perikanan	25274805	Pusat Penelitian Sosial Ekonomi Kelautan dan Perikanan
249	Jurnal Sositeknologi	2443258X	Kelompok Keahlian Ilmu Kemanusiaan FSRD ITB
250	Jurnal Studi Komunikasi dan Media	24076015	Balai Pengkajian dan Pengembangan Komunikasi dan Informatika
251	Jurnal Sumberdaya Lahan	19070799	Balai Besar Penelitian dan Pengembangan Sumberdaya Lahan Pertanian
252	Jurnal Tamanan Industri dan Penyegar ( <i>Journal of Industrial and Beverage Crops</i> )	25287222	Pusat Penelitian dan Pengembangan Perkebunan
253	Jurnal Teknik Industri : Jurnal Keilmuan dan Aplikasi Teknik Industri	20877439	Jurusan Teknik Industri, Fakultas Teknologi Industri, Universitas Kristen Petra
254	Jurnal Teknik Sipil	25492659	Institut Teknologi Bandung
255	Jurnal Teknologi Bahan & Barang Teknik	20894767	Balai Besar Bahan dan Barang Teknik
256	Jurnal Teknologi dan Industri Pangan	2087751X	Perhimpunan Ahli Teknologi Pangan Indonesia (PATPI) Bekerjasama dengan Departemen Ilmu dan Teknologi Pangan, FATETA IPB

257	Jurnal Teknologi dan Sistem Komputer	23380403	Departemen Teknik Sistem Komputer, Universitas Diponegoro
258	Jurnal Teknologi Industri Pertanian	22523901	Departemen Teknologi Industri Pertanian, Institut Pertanian Bogor
259	Jurnal Teknologi Informasi dan Ilmu Komputer	25286579	Fakultas Ilmu Komputer, Universitas Brawijaya
260	Jurnal Teknologi Pendidikan	26203081	LPPM Universitas Negeri Jakarta
261	Jurnal Teknosains	24431311	Sekolah Pascasarjana Universitas Gadjah Mada
262	Jurnal Theologia	2540847X	Fakultas Ushuluddin dan Humaniora, Universitas Islam Negeri Walisongo
263	Jurnal Vektor Penyakit	23548835	Balai Litbang P2B2 Donggala, Badan Penelitian dan Pengembangan Kesehatan
264	Jurnal Veteriner : Jurnal Kedokteran Hewan Indonesia	24775665	Fakultas Kedokteran Hewan, Universitas Udayana
265	Jurnal Wasian : Wahana Informasi Penelitian Kehutanan	25025198	Balai Penelitian Kehutanan Manado
266	Jurnal Wilayah dan Lingkungan	24078751	Laboratorium Pengembangan Wilayah dan Manajemen Lingkungan, Departemen Perencanaan Wilayah dan Kota, Universitas Diponegoro
267	k@ta	23026294	Universitas Kristen Petra Surabaya
268	Kafa`ah : <i>Journal of Gender Studies</i>	23560630	Center for Gender and Child Studies (PSGA) LP2M IAIN Imam Bonjol Padang
269	Kalam	25407759	Fakultas Ushuluddin UIN Raden Intan Lampung
270	Kalpataru	25500449	Pusat Penelitian Arkeologi Nasional
271	KARSA: Jurnal Sosial dan Budaya Keislaman	24424285	STAIN PAMEKASAN
272	KEMAS : Jurnal Kesehatan Masyarakat	23553596	Jurusan Ilmu Kesehatan Masyarakat, Fakultas Ilmu Keolahragaan, Universitas Negeri Semarang
273	Kesmas: Jurnal Kesehatan Masyarakat Nasional	24600601	Fakultas Kesehatan Masyarakat Universitas Indonesia
274	KOMUNITAS: <i>INTERNATIONAL JOURNAL OF INDONESIAN SOCIETY AND CULTURE</i>	24607320	Jurusan Sosiologi dan Antropologi Universitas Negeri Semarang

275	KONSELING RELIGI : Jurnal Bimbingan Konseling Islam	24772100	Prodi Bimbingan dan Konseling Islam Jurusan Dakwah dan Komunikasi, STAIN Kudus
276	Kontekstualita : Jurnal Penelitian Sosial Keagamaan	25481770	Lembaga Penelitian Dan Pengabdian Kepada Masyarakat, IAIN STS Jambi
277	Kwangsan: Jurnal Teknologi Pendidikan	26224283	Balai Pengembangan Media Televisi Pendidikan, Kementerian Pendidikan dan Kebudayaan
278	Lingua Cultura	2460710X	Universitas Bina Nusantara
279	Linguistik Indonesia	25802429	Himpunan Profesi Masyarakat Linguistik Indonesia
280	LITERA	24608319	Fakultas Bahasa dan Seni Universitas Negeri Yogyakarta
281	Lontar Komputer : Jurnal Ilmiah Teknologi Informasi	25415832	Lembaga Penelitian dan Pengabdian Kepada Masyarakat (LPPM) Universitas Udayana
282	Madania : Jurnal Kajian Keislaman	25021826	IAIN Bengkulu
283	Majalah Anestesia dan Critical Care	25027999	Perhimpunan Dokter Spesialis Anestesiologi dan Terapi Intensif Indonesia (PERDATIN)
284	Majalah Geografi Indonesia	2540945X	Fakultas Geografi Universitas Gadjah Mada
285	Majalah Ilmiah Globe	25022172	Badan Informasi Geospasial
286	Majalah Kedokteran Gigi Indonesia	24422576	Fakultas Kedokteran Gigi Universitas Gadjah Mada
287	Majalah Kulit, Karet, dan Plastik	24604461	Balai Besar Kulit, Karet, dan Plastik
288	Majalah Obat Tradisional	24069086	Fakultas Farmasi Universitas Gadjah Mada
289	Majalah Obstetri dan Ginekologi	25981013	Departemen Obstetri dan Ginekologi Fakultas Kedokteran Universitas Airlangga Surabaya
290	<i>Makara Hubs-Asia (Human Behavior Studies in Asia)</i>	24069183	Universitas Indonesia
291	<i>Makara Journal of Health Research</i>	23563656	Direktorat Riset dan Pengabdian Masyarakat, Universitas Indonesia
292	Makara Journal of Technology	23564539	Direktorat Riset dan Pengabdian Masyarakat, Universitas Indonesia
293	Marine Fisheries : Jurnal Teknologi dan Manajemen Perikanan Laut	25411659	Departemen Pemanfaatan Sumber Daya Perikanan, Fakultas Perikanan dan Ilmu Kelautan, Institut Pertanian Bogor

294	Masalah-Masalah Hukum	25274716	Fakultas Hukum, Universitas Diponegoro
295	Masyarakat, Kebudayaan dan Politik	25286013	Universitas Airlangga
296	Mazahib : Jurnal Pemikiran Hukum Islam	24606588	IAIN Samarinda
297	Media Gizi Mikro Indonesia	23548746	Balai Penelitian dan Pengembangan Gangguan Akibat Kekurangan Iodium (BPP GAKI), Badan Penelitian dan Pengembangan Kesehatan
298	Media Hukum	25031023	Laboratorium Ilmu Hukum Fakultas Hukum Universitas Muhammadiyah Yogyakarta
299	Media Kesehatan Masyarakat Indonesia	23564067	Fakultas Kesehatan Masyarakat Universitas Hasanuddin
300	Media Komunikasi Teknik Sipil	25496778	Badan Musyawarah Pendidikan Tinggi Teknik Sipil Seluruh Indonesia (BMPTSSI)
301	Mimbar : Jurnal Sosial dan Pembangunan	23032499	Pusat Penerbitan Universitas, LPPM, Universitas Islam Bandung
302	Miqot : Jurnal Ilmu-ilmu Keislaman	25023616	Universitas Islam Negeri (UIN) Sumatera Utara
303	MIX : Jurnal Ilmiah Manajemen	24605328	Program Pasca Sarjana Magister Manajemen Universitas Mercu Buana
304	Molekul : Jurnal Ilmiah Kimia	25030310	Jurusan Kimia FMIPA Universitas Jenderal Soedirman Purwokerto
305	Mozaik Humaniora	24428469	Unit Penelitian, Publikasi, dan Dokumentasi, Fakultas Ilmu Budaya, Universitas Airlangga
306	Musawa : Jurnal Studi Gender dan Islam	25034596	Pusat Pengarusutamaan Gender dan Hak Anak (P2GHA), UIN Sunan Kalijaga Yogyakarta
307	Mutawatir : Jurnal Keilmuan Tafsir Hadith	25026321	Jurusan Tafsir Hadis Fakultas Ushuluddin dan Filsafat UIN Sunan Ampel Surabaya
308	Naditira Widya	25484125	Balai Arkeologi Kalimantan Selatan (Balai Arkeologi Banjarmasin)
309	Nadwa : Jurnal Pendidikan Islam	25028057	Fakultas Ilmu Tarbiyah dan Keguruan, Universitas Islam Negeri Walsongo Semarang
310	Neurona	25023748	Perhimpunan Dokter Spesialis Saraf Indonesia (PERDOSSI)

311	<i>Nurse Media Journal of Nursing</i>	24068799	Fakultas Kedokteran, Universitas Diponegoro
312	Omni-Akuatika	24769347	Fakultas Perikanan dan Ilmu Kelautan, Universitas Jenderal Soedirman
313	<i>Padjadjaran Journal of Dentistry</i>	25496212	Fakultas Kedokteran Gigi Universitas Padjadjaran
314	PADJADJARAN: Jurnal Ilmu Hukum ( <i>Journal of Law</i> )	24429325	Fakultas Hukum Universitas Padjadjaran
315	Paediatrica Indonesiana: <i>Indonesian Journal of Pediatrics and Perinatal Medicine</i>	2338476X	Indonesian Pediatric Society Publishing
316	PALASTReN: Jurnal Studi Gender	24775215	Pusat Studi Gender (PSG), Sekolah Tinggi Agama Islam (STAIN) Kudus
317	Pangan	25276239	Divisi Riset dan Perencanaan Strategis, Perusahaan Umum (Perum) BULOG
318	Papua : Jurnal Penelitian Arkeologi Papua dan Papua Barat	25809237	Balai Arkeologi Jayapura
319	<i>Pharmaceutical Sciences and Research (PSR)</i>	24770612	Fakultas Farmasi Universitas Indonesia
320	Pharmaciana: Jurnal Kefarmasian	24770256	Fakultas Farmasi, Universitas Ahmad Dahlan
321	<i>Planta Tropika : Jurnal Agrosains (Journal of Agro Science)</i>	25287079	Universitas Muhammadiyah Yogyakarta
322	Politik Indonesia: <i>Indonesian Political Science Review</i>	25034456	Program Studi Ilmu Politik, Fakultas Ilmu Sosial, Universitas Negeri Semarang
323	REGISTER Journal	2503040X	IAIN Salatiga
324	Reinwardtia	23378824	PUSLIT BIOLOGI-LIPI
325	REKAM	24429376	Fakultas Seni Media Rekam ISI Yogyakarta
326	Religio : Jurnal Studi Agama-agama	25033778	Program Studi Perbandingan Agama, Fakultas Ushuluddin dan Filasafat, Universitas Islam Negeri Sunan Ampe
327	Resital: Jurnal Seni Pertunjukan ( <i>Journal of Performing Arts</i> )	23386770	Fakultas Seni Pertunjukan, Institut Seni Indonesia Yogyakarta
328	RISET Geologi dan Pertambangan	23546638	Pusat Penelitian Geoteknologi LIPI
329	SAINS TANAH - <i>Journal of Soil Science and Agroclimatology</i>	23561424	Jurusan Ilmu Tanah, Fakultas Pertanian, Universitas Sebelas Maret

330	Sari Pediatri	23385030	Pengurus Besar Ikatan Dokter Anak Indonesia
331	Sawerigading	25278762	Balai Bahasa Provinswi Sulawesi Selatan dan Provinsi Sulawesi Barat
332	Sawwa: Jurnal Studi Gender	25811215	Pusat Studi Gender dan Anak (PSGA) Universitas Islam Negeri (UIN) Walisongo Semarang
333	Scientific Contributions Oil and Gas	25410520	Pusat Penelitian dan Pengembangan Teknologi Minyak dan Gas Bumi LEMIGAS
334	Signifikan : Jurnal Ilmu Ekonomi	24769223	Fakultas Ekonomi dan Bisnis UIN Syarif Hidayatullah Jakarta
335	Sodality : Jurnal Sosiologi Pedesaan	23027525	Departemen Sains Komunikasi dan Pengembangan Masyarakat, Institut Pertanian Bogor
336	Sosio Informa	25027913	Pusat Penelitian dan Pengembangan Kesejahteraan Sosial, Kementerian Sosial
337	Suhuf: Jurnal Pengkajian Al-Quran dan Budaya	25486942	Lajnah Pentashihan Mushaf Al-Qur'an, Badan Litbang dan Diklat, Kementerian Agama
338	TARBIYA : <i>Journal Education in Muslim Society</i>	24429848	Fakultas Ilmu Tarbiyah dan Keguruan UIN Syarif Hidayatullah Jakarta
339	Tataloka	23560266	Jurusan Perencanaan Wilayah dan Kota, Fakultas Teknik, Universitas Diponegoro
340	Teosofi: Jurnal Tasawuf dan Pemikiran Islam	2442871X	Progam Studi Filsafat Agama Fakultas Ushuluddin UIN Sunan Ampel Surabaya
341	Tesa Arsitektur	24606367	Program Studi Arsitektur Fakultas Arsitektur dan Desain Universitas Katolik Soegijapranata
342	<i>The Asian Journal of Technology Management : AJTM</i>	2089791X	Unit Research and Knowledge, Sekolah Bisnis dan Manajemen Institut Teknologi Bandung
343	<i>The Indonesian Journal of Gastroenterology, Hepatology and Digestive Endoscopy</i>	23028181	Perkumpulan Gastroenterologi Indonesia (PGI), Perhimpunan Peneliti Hati Indonesia (PPHI), Perhimpunan Endoskopi Gastrointestinal Indonesia (PEGI)
344	<i>The Journal of Pure and Applied Chemistry Research</i>	25410733	Jurusan Kimia, Universitas Brawijaya



	345	<i>The South East Asian Journal of Management</i>	23556641	Management Research Center, Departemen Manajemen Fakultas Ekonomi Universitas Indonesia
	346	TREUBIA	2337876X	PUSLIT BIOLOGI-LIPI
	347	Ulul Albab: Jurnal Studi Islam	24425249	UIN Maulana Malik Ibrahim Malang
	348	Ulumuna : Jurnal Sekolah Tinggi Agama Islam Negeri Mataram	23557648	Sekolah Tinggi Agama Islam Negeri Mataram
	349	Walisongo: Jurnal Penelitian Sosial Keagamaan	2461064X	LP2M UIN Walisongo
	350	Warta Ardhia : Jurnal Perhubungan Udara	25284045	Pusat Penelitian dan Pengembangan Transportasi Udara, Kementerian Perhubungan
	351	Warta IHP (Industri Hasil Pertanian)	2151243	Balai Besar Penelitian dan Pengembangan Industri Hasil Pertanian Bogor
	352	Warta Perkaretan	25035207	Pusat Penelitian Karet Bogor
	353	Yuridika	25283103	Universitas Airlangga
	354	Yustisia	25490907	Fakultas Hukum Universitas Sebelas Maret
	355	Zoo Indonesia	25278703	Masyarakat Zoologi Indonesia
Peringkat 3 (Tiga)	1	Arabi : Journal of Arabic Studies	25486624	IMLA (Ittihad Mudarrisi al Lughah al-'Arabiyyah) Ikatan Pengajar Bahasa Arab se-Indonesia
	2	BHUMI: Jurnal Agraria dan Pertanahan	25802151	Pusat Penelitian Dan Pengabdian Kepada Masyarakat Sekolah Tinggi Pertanahan Nasional
	3	Bioma : Jurnal Ilmiah Biologi	25499890	Program Studi Pendidikan Biologi FPMIPATI Universitas PGRI Semarang
	4	Diponegoro Law Review	25274031	Fakultas Hukum Universitas Diponegoro
	5	EMARA : Indonesian Journal of Architecture	24775975	Universitas Islam Negeri Sunan Ampel
	6	Esensi: Jurnal Bisnis dan Manajemen	24611182	Fakultas Ekonomi dan Bisnis UIN Syarif Hidayatullah Jakarta
	7	Evangelikal: Jurnal Teologi Injili dan Pembinaan Warga Jemaat	25487558	Sekolah Tinggi Teologi Simpson
	8	Indonesian Language Education and Literature	25022261	Jurusan Tadris Bahasa Indonesia, IAIN Syekh Nurjati Cirebon

9	INFORMASI	25023837	Jurusan Ilmu Komunikasi Fakultas Ilmu Sosial Universitas Negeri Yogyakarta
10	International Journal of Pedagogy and Teacher Education	25498525	Fakultas Keguruan dan Ilmu Pendidikan Universitas Sebelas Maret Surakarta
11	JINOP (Jurnal Inovasi Pembelajaran)	24600873	Universitas Muhammadiyah Malang
12	JKPK (Jurnal Kimia dan Pendidikan Kimia)	25034154	Program Studi Pendidikan Kimia, Fakultas Keguruan dan Ilmu Pendidikan, Universitas Sebelas Maret
13	Journal Biology Education	2540833X	Jurusan Biologi FMIPA UNNES
14	Journal of Educational Science And Technology (EST)	24773840	Program Pascasarjana Universitas Negeri Makassar
15	Journal of ICSAR	25488600	Jurusan Pendidikan Luar Biasa, Fakultas Ilmu Pendidikan, Universitas Negeri Malang
16	JUPIIS: Jurnal Pendidikan Ilmu-ilmu Sosial	24077429	Fakultas Ilmu Sosial Universitas Negeri Medan
17	JTERA (Jurnal Teknologi Rekayasa)	25488678	Politeknik Sukabumi
18	Jurnal Aisyah : Jurnal Ilmu Kesehatan	25029495	STIKES Aisyah Pringsewu Lampung
19	Jurnal Bimbingan dan Konseling Terapan	25499092	Universitas Pattimura
20	Jurnal Biota	24607746	Program Studi Biologi Fakultas Sains dan Teknologi UIN Raden Fatah Palembang
21	Jurnal Cita Hukum	2502230X	Fakultas Syariah dan Hukum Uin Syarif Hidayatullah Jakarta
22	Jurnal Ekonomi Modernisasi	25024078	Fakultas Ekonomika dan Bisnis Universitas Kanjuruhan Malang
23	Jurnal Ilmiah Manajemen dan Bisnis	25804170	Universitas Muhammadiyah Sumatera Utara
24	Jurnal Ilmiah Rekayasa Pertanian dan Biosistem	24431354	Fakultas Teknologi Pangan dan Agroindustri (FATEPA) Universitas Mataram dan Perhimpunan Teknik Pertanian (PERTETA) Cabang NTB
25	Jurnal Ilmu Sosial Mamangan	25031570	Pendidikan Sosiologi STKIP PGRI Sumatera Barat
26	Jurnal Komunikasi Ikatan Sarjana Komunikasi Indonesia	25030795	Ikatan Sarjana Komunikasi Indonesia Jakarta

27	Jurnal Pendidikan Geografi : Kajian, Teori, dan Praktek dalam Bidang Pendidikan dan Ilmu Geografi	2527628X	Jurusan Geografi Fakultas Ilmu Sosial Universitas Negeri Malang
28	Jurnal Pendidikan Matematika dan IPA	25797530	Fakultas Perguruan dan Ilmu Pendidikan Universitas Tanjungpura
29	Jurnal Penelitian dan Pengembangan Pendidikan Luar Biasa	25283197	Jurusan Pendidikan Luar Biasa FIP Universitas Negeri Malang bekerjasama dengan Asosiasi Profesi Pendidikan Khusus Indonesia
30	Jurnal Penjaminan Mutu	25483110	Lembaga Penjaminan Mutu Institut Hindu Dharma Negeri Denpasar
31	Jurnal Riset Akuntansi dan Keuangan	2541061X	Program Studi Akuntansi Fakultas Pendidikan Ekonomi dan Bisnis Universitas Pendidikan Indonesia
32	LANGKAWI: Journal of The Association for Arabic and English	25499017	UPT Pengembangan Bahasa Institut Agama Islam Negeri Kendari
33	LLT Journal: A Journal on Language and Language Teaching	25799533	Universitas Sanata Dharma
34	Matrix : Jurnal Manajemen Teknologi dan Informatika	25805630	Politeknik Negeri Bali
35	MCBS (Molecular and Cellular Biomedical Sciences)	25273442	Cell and BioPharmaceutical Institute
36	Mimbar Sekolah Dasar	25024795	Program Studi PGSD, Universitas Pendidikan Indonesia Kampus Sumedang
37	Nature : National Academic Journal of Architecture	25794809	Fakultas Sains Dan Teknologi Universitas Islam Negeri Alauddin Makassar
38	NOBEL: Journal of Literature and Language Teaching	25492470	UIN Sunan Ampel Surabaya
39	Paradigma : Jurnal Kajian Budaya	25030868	Fakultas Ilmu Pengetahuan Budaya, Universitas Indonesia
40	Populasi	2476941X	Pusat Studi Kependudukan dan Kebijakan Universitas Gadjah Mada
41	Psikohumaniora: Jurnal Penelitian Psikologi	25277456	Program Studi Psikologi Fakultas Psikologi dan Kesehatan Universitas Islam Negeri Walisongo Semarang
42	Psymphatic : Jurnal Ilmiah Psikologi	25022903	Fakultas Psikologi UIN Sunan Gunung Djati
43	SISFORMA: Journal of Information Systems	24427888	Program Studi Sistem Informasi, Fakultas Ilmu

				Komputer, Universitas Soegijapranata Semarang
Peringkat 4 (Empat)	1	Agrikan	26210193	Sekolah Tinggi Ilmu Pertanian Wuna Raha
	2	Al-Bayan: Jurnal Studi Al-Qur'an dan Tafsir	25408461	Jurusan Ilmu Al-Qur'an dan Tafsir, Fakultas Ushuluddin, UIN Sunan Gunung Djati Bandung
	3	Al-Izzah : Jurnal Hasil-hasil Penelitian	25410717	LPPM IAIN Kendari
	4	AL-MURABBI: Jurnal Studi Kependidikan dan Keislaman	25407619	LPPM STIT Islamiyah Karya Pembangunan Paron Ngawi
	5	Anterior Jurnal	23553529	Lembaga Penelitian dan Pengabdian Pada Masyarakat Universitas Muhammadiyah Palangkaraya
	6	BIODIK: Jurnal Ilmiah Pendidikan Biologi	25800922	Universitas Jambi
	7	Ekonomikawan : Jurnal Ilmu Ekonomi dan Studi Pembangunan	25980157	Universitas Muhammadiyah Sumatera Utara
	8	Gramatika: Jurnal Ilmiah Kebahasaan dan Kesastraan	25993283	Kantor Bahasa Maluku Utara
	9	Intiqad: Jurnal Agama dan Pendidikan Islam	25980033	Universitas Muhammadiyah Sumatera Utara
	10	INVOTEC	24611336	Fakultas Pendidikan Teknologi dan Kejuruan, Universitas Pendidikan Indonesia
	11	Jurnal IQRA' : Kajian Ilmu Pendidikan	25487892	Fakultas Tarbiyah IAI Ma'arif NUMetro Lampung
	12	Journal of Medives : Journal of Mathematics Education IKIP Veteran Semarang	25495070	Jurusan Pendidikan Matematika, Institut Keguruan dan Ilmu Pendidikan (IKIP) Veteran Semarang
	13	Journal Physical Education, Health, and Recreation	25489208	Universitas Negeri Medan
	14	JTIKOR (Jurnal Terapan Ilmu Keolahragaan)	25496360	Universitas Pendidikan Indonesia
	15	Jurnal Akuntansi, Manajemen dan Ekonomi	26208482	Fakultas Ekonomi dan Bisnis, Universitas Jenderal Soedirman
	16	Jurnal Analisa	25495143	Prodi Pendidikan Matematika Universitas Islam Negeri Sunan Gunung Djati Bandung
	17	Jurnal ASET (Akuntansi Riset)	25410342	Program Studi Akuntansi Fakultas Pendidikan Ekonomi dan Bisnis Universitas Pendidikan Indonesia
	18	Jurnal Bahasa Lingua Scientia	25494228	Pusat Pengembangan Bahasa, Institut Agama

			Islam Negeri (IAIN) Tulungagung	
19	Jurnal Dinamika Vokasional Teknik Mesin	25487590	Fakultas Teknik Universitas Negeri Yogyakarta	
20	Jurnal Ilmu Ekonomi dan Pembangunan	14122200	Fakultas Ekonomi Universitas Sebelas Maret	
21	Jurnal Ilmu Komputer	2622321X	Jurusan Ilmu Komputer FMIPA Universitas Udayana	
22	Jurnal Indria : Jurnal Ilmiah Pendidikan Prasekolah dan Sekolah Awal	2528004X	Universitas Muhammadiyah Ponorogo	
23	Jurnal Keperawatan dan Kesehatan Masyarakat Cendekia Utama	25984217	STIKES Cendekia Utama Kudus	
24	Jurnal Kesehatan Gigi	26213664	Poltekkes Kemenkes Semarang	
25	Jurnal Kesehatan Manarang	25285602	Politeknik Kesehatan Kemenkes Mamuju	
26	Jurnal Pendidikan Ekonomi	25793780	Universitas Negeri Malang	
27	Jurnal Riset Kesehatan	24611026	Politeknik Kesehatan Kemenkes Semarang	
28	Jurnal Teknologi Pangan dan Gizi (Jurnal of Food Technology and Nutrition)	2613909X	Universitas Katolik Widya Mandala Surabaya	
29	Media Kesehatan Politeknik Kesehatan Makassar	25490567	Politeknik Kesehatan Makassar	
30	Modeling: Jurnal Prodi PGMI	2477667X	Prodi PGMI STITNU Al Hikmah Mojokerto	
31	TELKA : Jurnal Telekomunikasi, Elektronika, Komputasi dan Kontrol	25409123	UIN Sunan Gunung Djati Bandung	
32	Titian Ilmu : Jurnal Ilmiah Multi Sciences	25811452	LPPM STKIP Nurul Huda	
Peringkat 5 (Lima)	1	CaLLs (Journal of Culture, Arts, Literature, and Linguistics)	25497707	Universitas Mulawarman
	2	Daun: Jurnal Ilmiah Pertanian dan Kehutanan	23560320	Universitas Muhammadiyah Palangkaraya
	3	Edunomic Jurnal Ilmiah Pendidikan Ekonomi	2541562X	UIN Sunan Gunung Djati Bandung
	4	E-Jurnal Akuntansi	23028556	Universitas Udayana
	5	Evaluasi Jurnal Manajemen Pendidikan Islam	26152886	STAI Ma'had Aly Al- Hikam
	6	JGK (Jurnal Guru Kita)	25491288	Jurusan PPSD Prodi PGSD Universitas Negeri Medan
	7	JKBM (Jurnal Konsep Bisnis dan Manajemen)	2407263X	Universitas Medan Area

8	JME (Journal of Mathematics Education)	25282026	USN Scientific Journal
9	JS (Jurnal Sekolah)	2549127X	Universitas Negeri Medan
10	Jurnal BIOEDUIN: Program Studi Pendidikan Biologi	26150417	UIN Sunan Gunung Djati Bandung
11	Dunia Keperawatan: Jurnal Dunia Keperawatan	25415980	Universitas Lambung Mangkurat
12	Jurnal Handayani PGSD FIP UNIMED	24076295	Prodi PGSD FIP Universitas Negeri Medan
13	Jurnal Ilmiah Sosio-Ekonomika Bisnis	26211246	Universitas Jambi
14	Jurnal SIKAP (Sistem Informasi, Keuangan, Auditing dan Perpajakan)	25991876	Universitas Sangga Buana
15	Media Ilmiah Teknik Sipil	24073857	Universitas Muhammadiyah Palangkaraya
16	Reka Buana : Jurnal Ilmiah Teknik Sipil dan Teknik Kimia	25032682	Universitas Tribhuwana Tungadewi Malang
17	TMJ (Technomedia Journal)	25286544	Raharja Enrichment Centre

Ditetapkan di Jakarta  
pada tanggal 24 Oktober 2018

DIREKTUR JENDERAL  
PENGUATAN RISET DAN PENGEMBANGAN,

TTD.

MUHAMMAD DIMYATI  
NIP 195912171984041001

Salinan sesuai dengan aslinya,  
Direktorat Jenderal Penguatan Riset dan Pengembangan  
Kementerian Riset, Teknologi, dan Pendidikan Tinggi  
Kepala Bagian Hukum, Kerjasama, dan Layanan Informasi,

TTD.

Syarip Hidayat  
NIP 197306101997031004